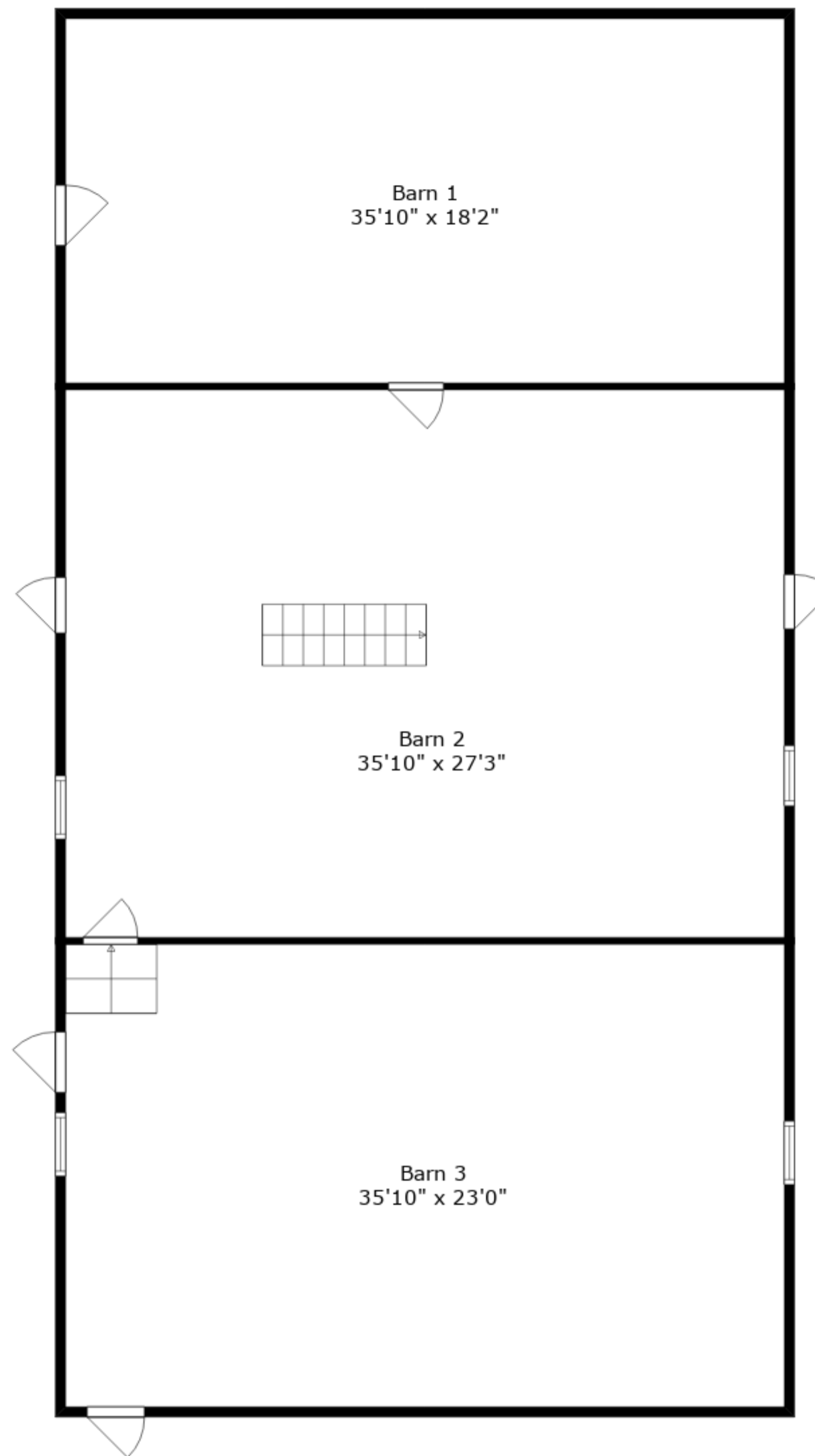


Total GLA: 2485 sq. ft | Total: 7560 sq. ft
 Lower floor: 895 sq. ft (Excluded areas 693 sq. ft)
 Main floor: 1590 sq. ft (Excluded areas 755 sq. ft)
 Barn main floor: 0 sq. ft (Excluded areas 2579 sq. ft)
 Barn upper floor: 0 sq. ft (Excluded areas 1048 sq. ft)

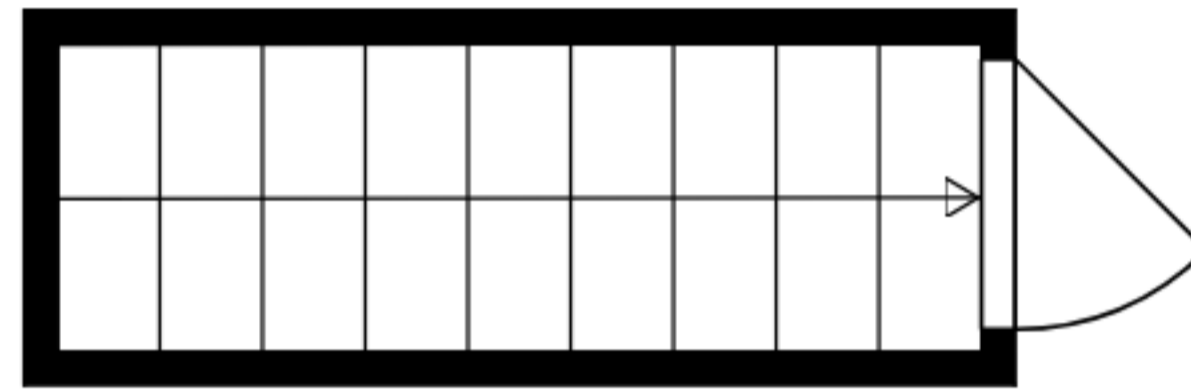
Sizes And Dimensions Are Approximate. Actual May Vary.



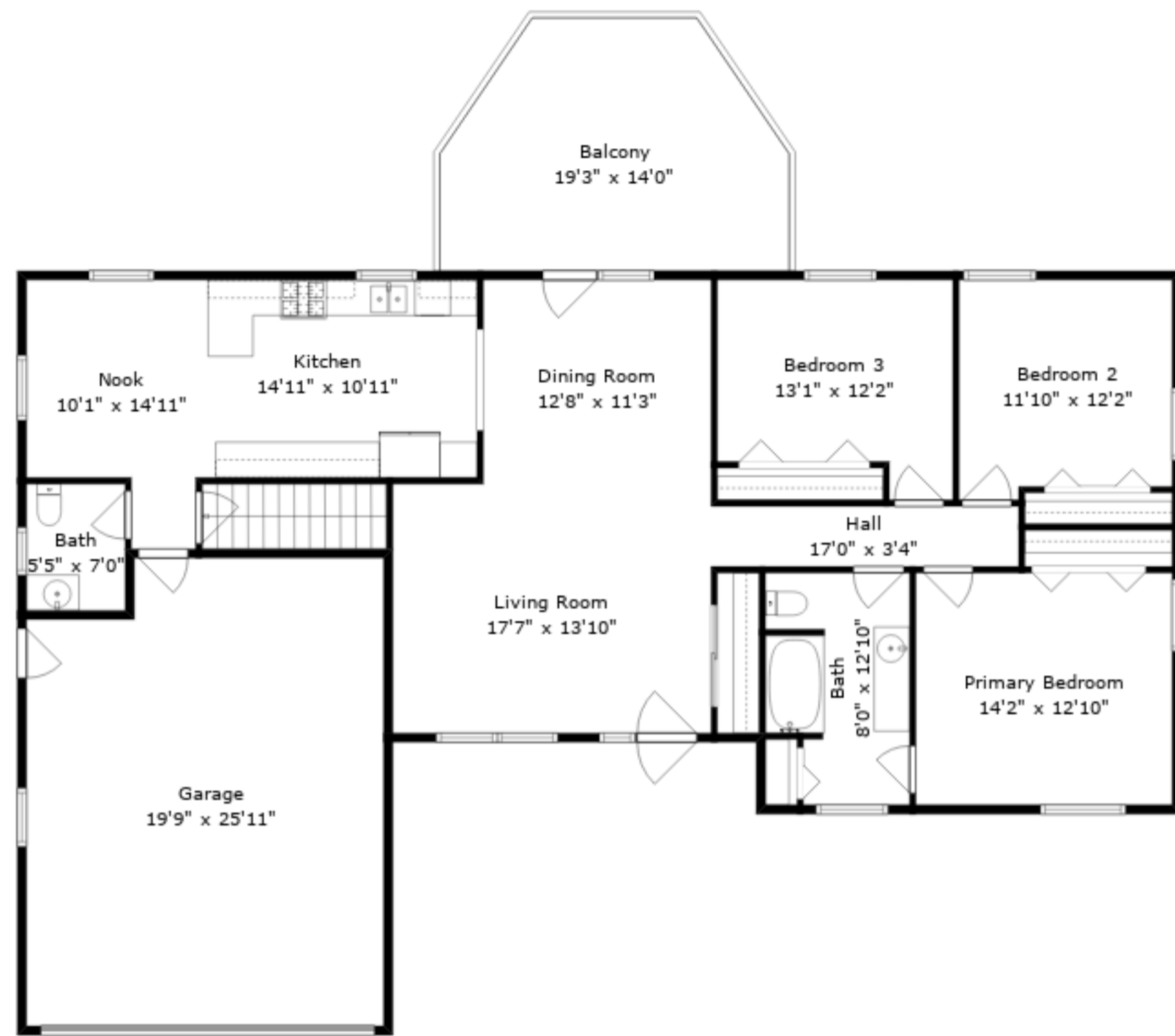
Total GLA: 2485 sq. ft | Total: 7560 sq. ft

Lower floor: 895 sq. ft (Excluded areas 693 sq. ft)
 Main floor: 1590 sq. ft (Excluded areas 755 sq. ft)
 Barn main floor: 0 sq. ft (Excluded areas 2579 sq. ft)
 Barn upper floor: 0 sq. ft (Excluded areas 1048 sq. ft)

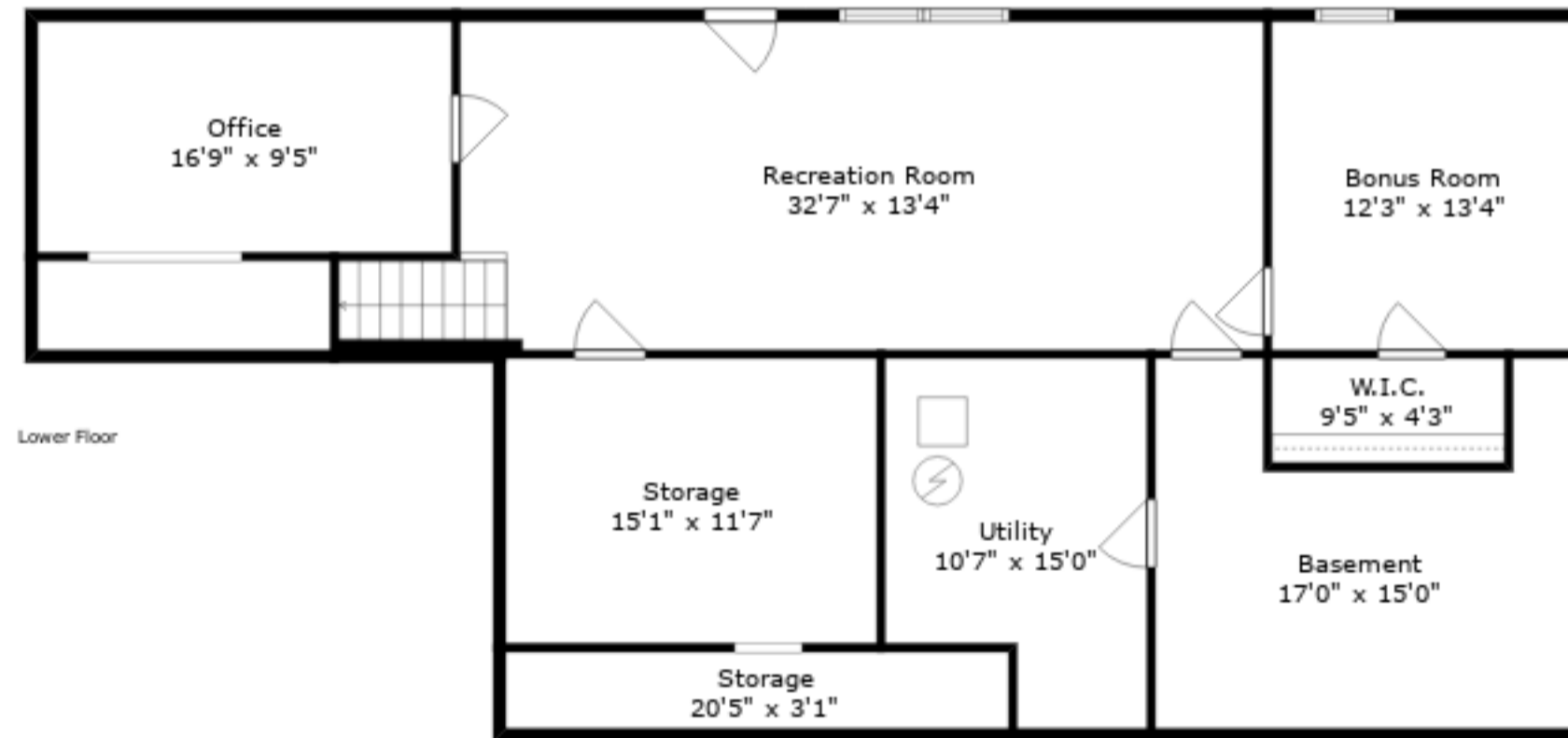
Sizes And Dimensions Are Approximate. Actual May Vary.



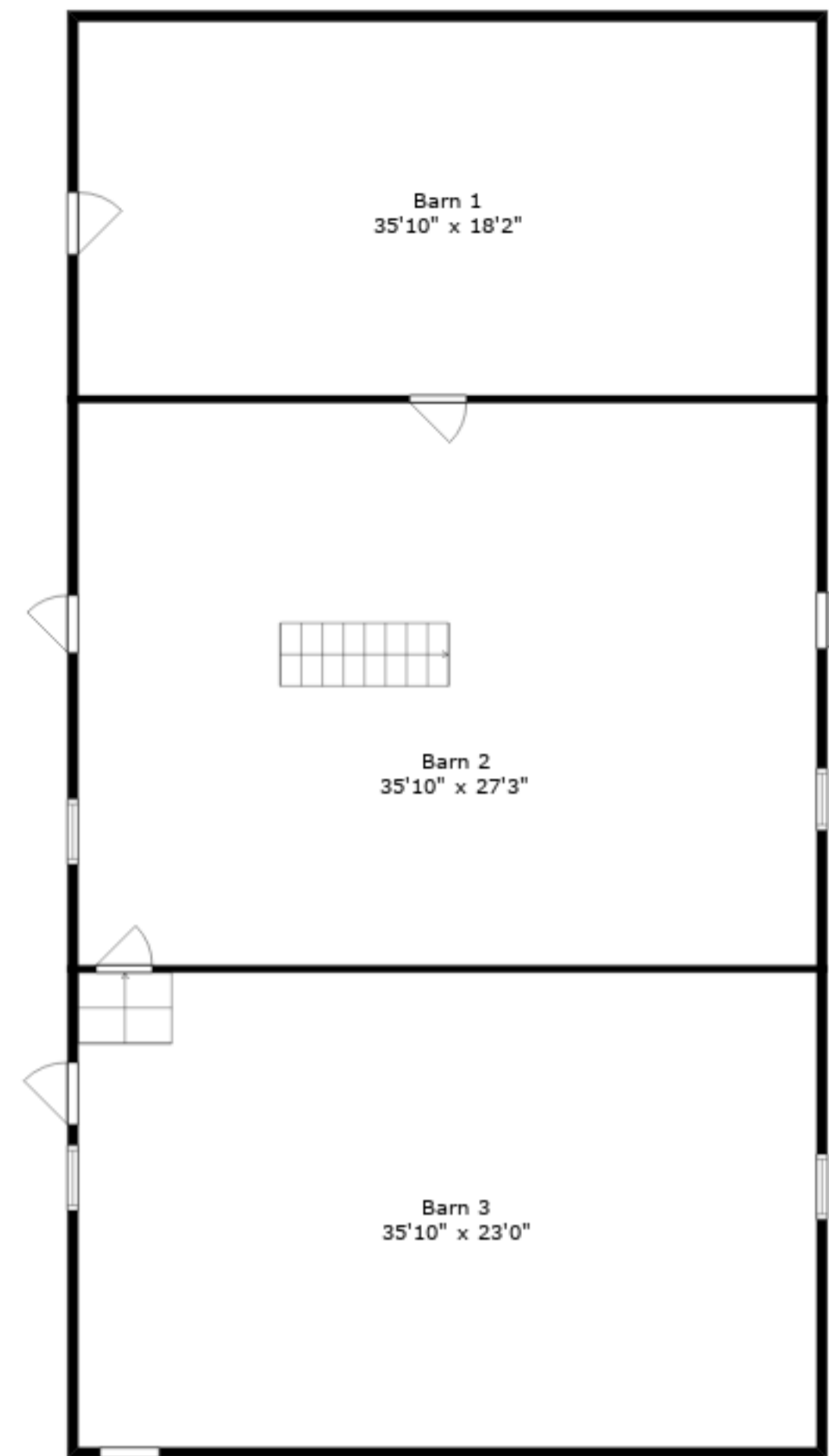
Barn 4
35'10" x 27'6"



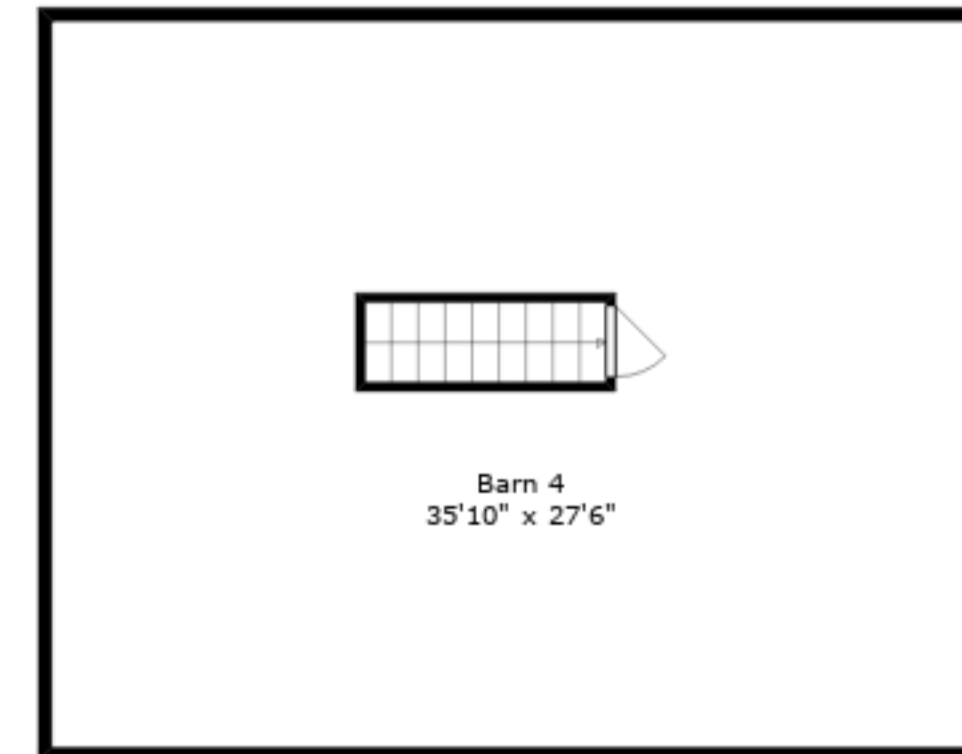
Main Floor



Lower Floor



Barn Main Floor



Barn Upper Floor

Total GLA: 2485 sq. ft | Total: 7560 sq. ft
 Lower floor: 895 sq. ft (Excluded areas 693 sq. ft)
 Main floor: 1590 sq. ft (Excluded areas 755 sq. ft)
 Barn main floor: 0 sq. ft (Excluded areas 2579 sq. ft)
 Barn upper floor: 0 sq. ft (Excluded areas 1048 sq. ft)

Sizes And Dimensions Are Approximate. Actual May Vary.