



Home report


5075 Briarstone Ridge Way,Alpharetta,GA,US





Property summary


**1** Garages


**6** Bedrooms

**5** Bathrooms

**0** Half baths

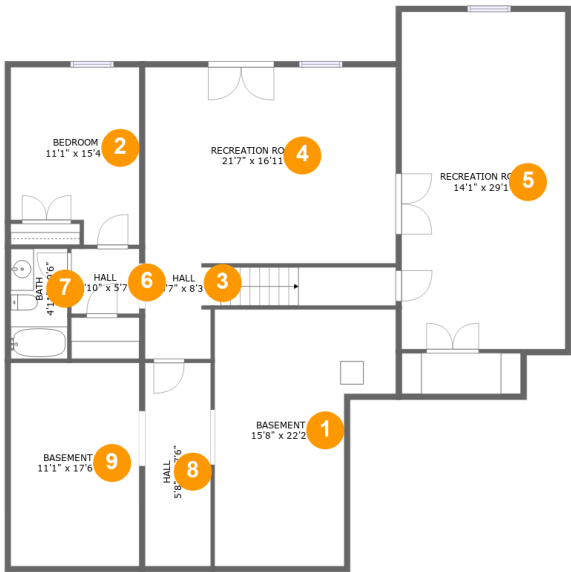
**3** Floors

**5,582** Gross living area sqft

**7,171** Total sqft

Home report

5075 Briarstone Ridge Way,Alpharetta,GA,US



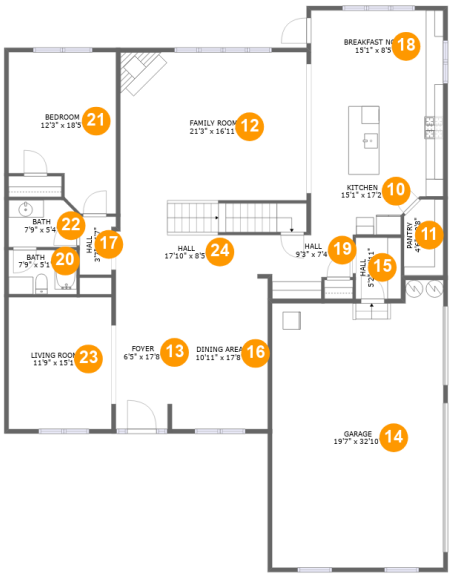
Room dimensions

Floor 1 Total sqft: 1923    Living area: 1419

#		Dimensions	sqft	Counted as living area
1	Basement	15'8" x 22'2"	280 sq. ft	No
2	Bedroom	11'1" x 15'4"	156 sq. ft	Yes
3	Hall	6'7" x 8'3"	99 sq. ft	Yes
4	Recreation Room	21'7" x 16'11"	366 sq. ft	Yes
5	Recreation Room	14'1" x 29'1"	411 sq. ft	Yes
6	Hall	5'10" x 5'7"	33 sq. ft	Yes
7	Bath	4'11" x 9'6"	46 sq. ft	Yes
8	Hall	5'8" x 17'6"	99 sq. ft	Yes
9	Basement	11'1" x 17'6"	194 sq. ft	No

Home report

5075 Briarstone Ridge Way,Alpharetta,GA,US



Room dimensions

Floor 2Total sqft: 2631    Living area: 1995

#		Dimensions	sqft	Counted as living area
10	Kitchen	15'1" x 17'2"	240 sq. ft	Yes
11	Pantry	4'6" x 8'8"	37 sq. ft	Yes
12	Family Room	21'3" x 16'11"	368 sq. ft	Yes
13	Foyer	6'5" x 17'8"	112 sq. ft	Yes
14	Garage	19'7" x 32'10"	601 sq. ft	No
15	Hall	5'2" x 6'11"	36 sq. ft	Yes
16	Dining Area	10'11" x 17'8"	193 sq. ft	Yes
17	Hall	3'7" x 6'7"	25 sq. ft	Yes
18	Breakfast Nook	15'1" x 8'5"	128 sq. ft	Yes
19	Hall	9'3" x 7'4"	58 sq. ft	Yes
20	Bath	7'9" x 5'1"	39 sq. ft	Yes

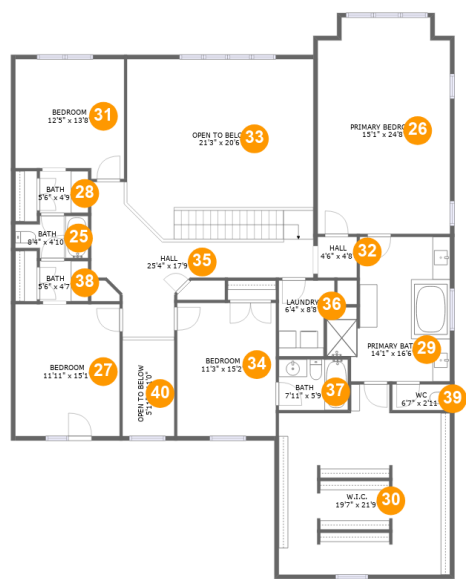
Home report

**5075 Briarstone Ridge Way, Alpharetta, GA, US**

#		Dimensions	sqft	Counted as living area
21	Bedroom	12'3" x 18'5"	195 sq. ft	Yes
22	Bath	7'9" x 5'4"	41 sq. ft	Yes
23	Living Room	11'9" x 15'1"	177 sq. ft	Yes
24	Hall	17'10" x 8'5"	157 sq. ft	Yes

Home report

5075 Briarstone Ridge Way,Alpharetta,GA,US



Room dimensions

Floor 3

Total sqft: 2617

Living area: 2168

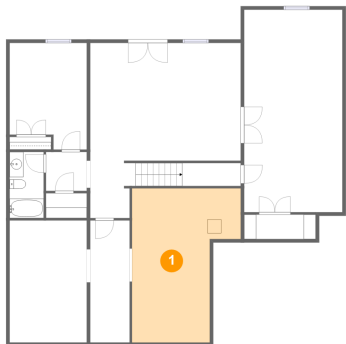
#		Dimensions	sqft	Counted as living area
25	Bath	8'4" x 4'10"	34 sq. ft	Yes
26	Primary Bedroom	15'1" x 24'8"	360 sq. ft	Yes
27	Bedroom	11'11" x 15'1"	179 sq. ft	Yes
28	Bath	5'6" x 4'9"	26 sq. ft	Yes
29	Primary Bath	14'1" x 16'6"	193 sq. ft	Yes
30	W.I.C.	19'7" x 21'9"	375 sq. ft	Yes
31	Bedroom	12'5" x 13'8"	159 sq. ft	Yes
32	Hall	4'6" x 4'8"	21 sq. ft	Yes
33	Open To Below	21'3" x 20'6"	371 sq. ft	No
34	Bedroom	11'3" x 15'2"	171 sq. ft	Yes
35	Hall	25'4" x 17'9"	250 sq. ft	Yes

Home report

5075 Briarstone Ridge Way,Alpharetta,GA,US

#		Dimensions	sqft	Counted as living area
36	Laundry	6'4" x 8'8"	48 sq. ft	Yes
37	Bath	7'11" x 5'9"	46 sq. ft	Yes
38	Bath	5'6" x 4'7"	25 sq. ft	Yes
39	WC	6'7" x 2'11"	19 sq. ft	Yes
40	Open To Below	5'11" x 11'0"	65 sq. ft	No

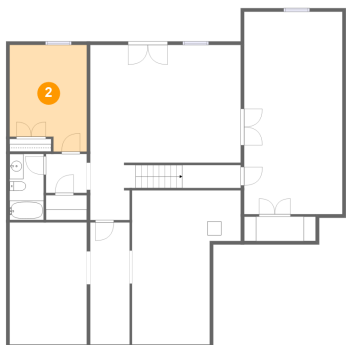
1 Floor 1 - Basement



Dimensions: 15'8" x 22'2"  
Area: 280 sq. ft  
Counted as living area: No

Heated: Yes  
Finished: No  
Enclosed: Yes  
Contiguous: Yes  
Permitted: Yes  
Wet space: No  
Addition: No  
Conversion: No

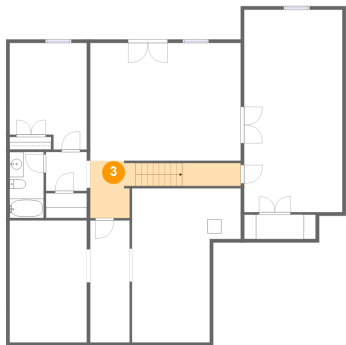
2 Floor 1 - Bedroom



Dimensions: 11'1" x 15'4"  
Area: 156 sq. ft  
Counted as living area: Yes

Heated: Yes  
Finished: Yes  
Enclosed: Yes  
Contiguous: Yes  
Permitted: Yes  
Wet space: No  
Addition: No  
Conversion: No

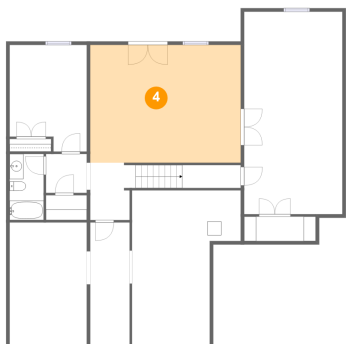
3 Floor 1 - Hall



Dimensions: 6'7" x 8'3"  
Area: 99 sq. ft  
Counted as living area: Yes

Heated: Yes  
Finished: Yes  
Enclosed: Yes  
Contiguous: Yes  
Permitted: Yes  
Wet space: No  
Addition: No  
Conversion: No

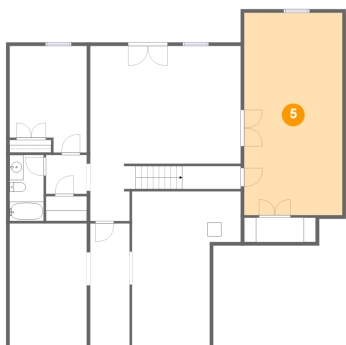
4 Floor 1 - Recreation Room



Dimensions: 21'7" x 16'11"  
Area: 366 sq. ft  
Counted as living area: Yes

Heated: Yes  
Finished: Yes  
Enclosed: Yes  
Contiguous: Yes  
Permitted: Yes  
Wet space: No  
Addition: No  
Conversion: No

5 Floor 1 - Recreation Room

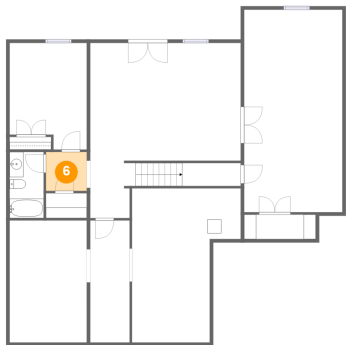


Dimensions: 14'1" x 29'1"  
Area: 411 sq. ft  
Counted as living area: Yes

Heated: Yes  
Finished: Yes  
Enclosed: Yes  
Contiguous: Yes  
Permitted: Yes  
Wet space: No  
Addition: No  
Conversion: No



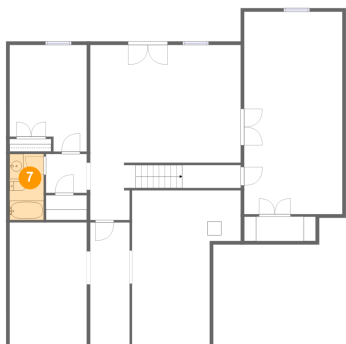
6 Floor 1 - Hall



Dimensions: 5'10" x 5'7"  
Area: 33 sq. ft  
Counted as living area: Yes

Heated: Yes  
Finished: Yes  
Enclosed: Yes  
Contiguous: Yes  
Permitted: Yes  
Wet space: No  
Addition: No  
Conversion: No

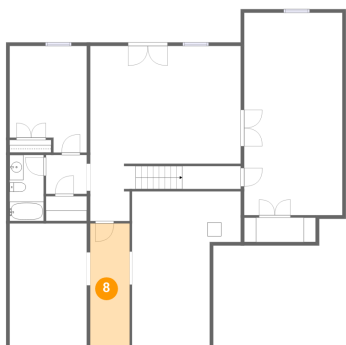
7 Floor 1 - Bath



Dimensions: 4'11" x 9'6"  
Area: 46 sq. ft  
Counted as living area: Yes

Heated: Yes  
Finished: Yes  
Enclosed: Yes  
Contiguous: Yes  
Permitted: Yes  
Wet space: Yes  
Addition: No  
Conversion: No

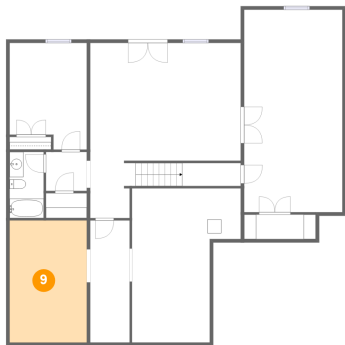
8 Floor 1 - Hall



Dimensions: 5'8" x 17'6"  
Area: 99 sq. ft  
Counted as living area: Yes

Heated: Yes  
Finished: Yes  
Enclosed: Yes  
Contiguous: Yes  
Permitted: Yes  
Wet space: No  
Addition: No  
Conversion: No

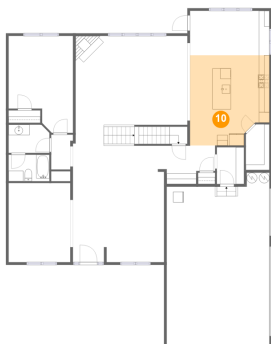
9 Floor 1 - Basement



Dimensions: 11'1" x 17'6"  
Area: 194 sq. ft  
Counted as living area: No

Heated: Yes  
Finished: No  
Enclosed: Yes  
Contiguous: Yes  
Permitted: Yes  
Wet space: No  
Addition: No  
Conversion: No

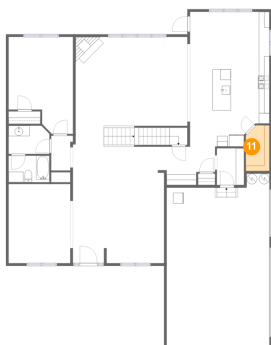
10 Floor 2 - Kitchen



Dimensions: 15'1" x 17'2"  
Area: 240 sq. ft  
Counted as living area: Yes

Heated: Yes  
Finished: Yes  
Enclosed: Yes  
Contiguous: Yes  
Permitted: Yes  
Wet space: No  
Addition: No  
Conversion: No

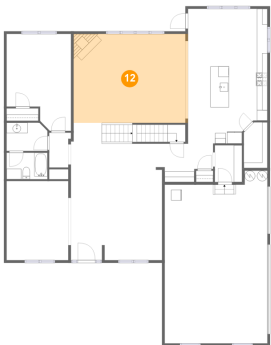
11 Floor 2 - Pantry



Dimensions: 4'6" x 8'8"  
Area: 37 sq. ft  
Counted as living area: Yes

Heated: Yes  
Finished: Yes  
Enclosed: Yes  
Contiguous: Yes  
Permitted: Yes  
Wet space: No  
Addition: No  
Conversion: No

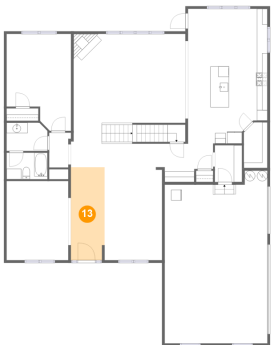
12 Floor 2 - Family Room



Dimensions: 21'3" x 16'11"  
Area: 368 sq. ft  
Counted as living area: Yes

Heated: Yes  
Finished: Yes  
Enclosed: Yes  
Contiguous: Yes  
Permitted: Yes  
Wet space: No  
Addition: No  
Conversion: No

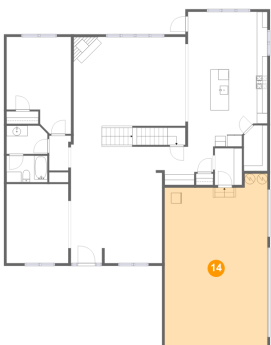
13 Floor 2 - Foyer



Dimensions: 6'5" x 17'8"  
Area: 112 sq. ft  
Counted as living area: Yes

Heated: Yes  
Finished: Yes  
Enclosed: Yes  
Contiguous: Yes  
Permitted: Yes  
Wet space: No  
Addition: No  
Conversion: No

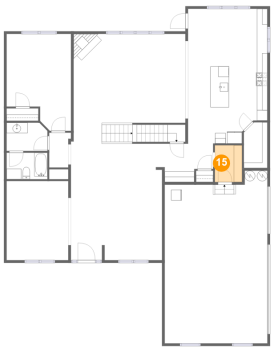
14 Floor 2 - Garage



Dimensions: 19'7" x 32'10"  
Area: 601 sq. ft  
Counted as living area: No

Heated: No  
Finished: No  
Enclosed: Yes  
Contiguous: Yes  
Permitted: Yes  
Wet space: No  
Addition: No  
Conversion: No

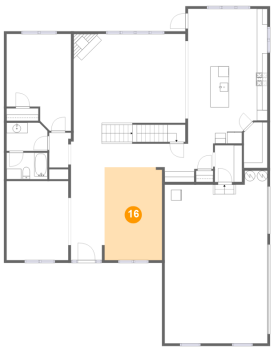
15 Floor 2 - Hall



Dimensions: 5'2" x 6'11"  
Area: 36 sq. ft  
Counted as living area: Yes

Heated: Yes  
Finished: Yes  
Enclosed: Yes  
Contiguous: Yes  
Permitted: Yes  
Wet space: No  
Addition: No  
Conversion: No

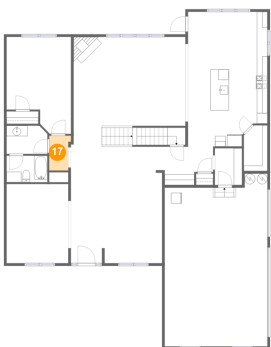
16 Floor 2 - Dining Area



Dimensions: 10'11" x 17'8"  
Area: 193 sq. ft  
Counted as living area: Yes

Heated: Yes  
Finished: Yes  
Enclosed: Yes  
Contiguous: Yes  
Permitted: Yes  
Wet space: No  
Addition: No  
Conversion: No

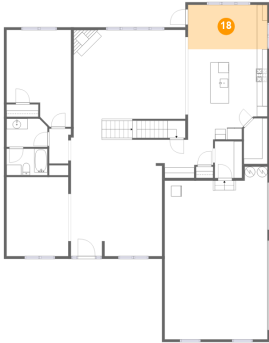
17 Floor 2 - Hall



Dimensions: 3'7" x 6'7"  
Area: 25 sq. ft  
Counted as living area: Yes

Heated: Yes  
Finished: Yes  
Enclosed: Yes  
Contiguous: Yes  
Permitted: Yes  
Wet space: No  
Addition: No  
Conversion: No

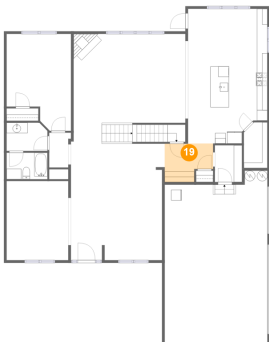
## 18 Floor 2 - Breakfast Nook



Dimensions: 15'1" x 8'5"  
Area: 128 sq. ft  
Counted as living area: Yes

Heated: Yes  
Finished: Yes  
Enclosed: Yes  
Contiguous: Yes  
Permitted: Yes  
Wet space: No  
Addition: No  
Conversion: No

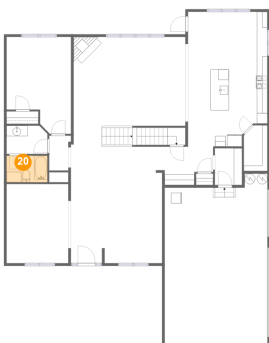
## 19 Floor 2 - Hall



Dimensions: 9'3" x 7'4"  
Area: 58 sq. ft  
Counted as living area: Yes

Heated: Yes  
Finished: Yes  
Enclosed: Yes  
Contiguous: Yes  
Permitted: Yes  
Wet space: No  
Addition: No  
Conversion: No

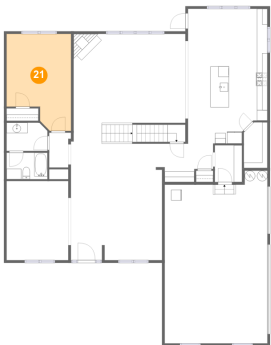
## 20 Floor 2 - Bath



Dimensions: 7'9" x 5'1"  
Area: 39 sq. ft  
Counted as living area: Yes

Heated: Yes  
Finished: Yes  
Enclosed: Yes  
Contiguous: Yes  
Permitted: Yes  
Wet space: Yes  
Addition: No  
Conversion: No

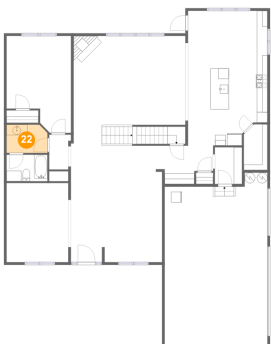
21 Floor 2 - Bedroom



Dimensions: 12'3" x 18'5"  
Area: 195 sq. ft  
Counted as living area: Yes

Heated: Yes  
Finished: Yes  
Enclosed: Yes  
Contiguous: Yes  
Permitted: Yes  
Wet space: No  
Addition: No  
Conversion: No

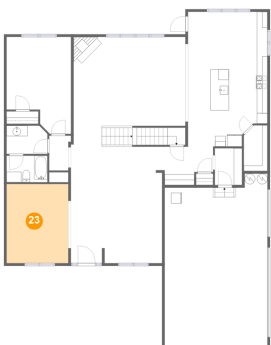
22 Floor 2 - Bath



Dimensions: 7'9" x 5'4"  
Area: 41 sq. ft  
Counted as living area: Yes

Heated: Yes  
Finished: Yes  
Enclosed: Yes  
Contiguous: Yes  
Permitted: Yes  
Wet space: Yes  
Addition: No  
Conversion: No

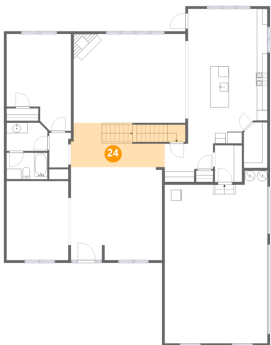
23 Floor 2 - Living Room



Dimensions: 11'9" x 15'1"  
Area: 177 sq. ft  
Counted as living area: Yes

Heated: Yes  
Finished: Yes  
Enclosed: Yes  
Contiguous: Yes  
Permitted: Yes  
Wet space: No  
Addition: No  
Conversion: No

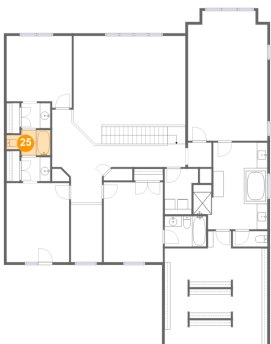
24 Floor 2 - Hall



Dimensions: 17'10" x 8'5"  
Area: 157 sq. ft  
Counted as living area: Yes

Heated: Yes  
Finished: Yes  
Enclosed: Yes  
Contiguous: Yes  
Permitted: Yes  
Wet space: No  
Addition: No  
Conversion: No

25 Floor 3 - Bath



Dimensions: 8'4" x 4'10"  
Area: 34 sq. ft  
Counted as living area: Yes

Heated: Yes  
Finished: Yes  
Enclosed: Yes  
Contiguous: Yes  
Permitted: Yes  
Wet space: Yes  
Addition: No  
Conversion: No

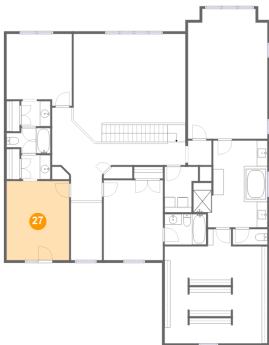
26 Floor 3 - Primary Bedroom



Dimensions: 15'1" x 24'8"  
Area: 360 sq. ft  
Counted as living area: Yes

Heated: Yes  
Finished: Yes  
Enclosed: Yes  
Contiguous: Yes  
Permitted: Yes  
Wet space: No  
Addition: No  
Conversion: No

27 Floor 3 - Bedroom



Dimensions: 11'11" x 15'1"  
Area: 179 sq. ft  
Counted as living area: Yes

Heated: Yes  
Finished: Yes  
Enclosed: Yes  
Contiguous: Yes  
Permitted: Yes  
Wet space: No  
Addition: No  
Conversion: No

28 Floor 3 - Bath



Dimensions: 5'6" x 4'9"  
Area: 26 sq. ft  
Counted as living area: Yes

Heated: Yes  
Finished: Yes  
Enclosed: Yes  
Contiguous: Yes  
Permitted: Yes  
Wet space: Yes  
Addition: No  
Conversion: No

29 Floor 3 - Primary Bath

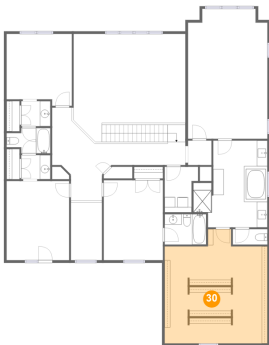


Dimensions: 14'1" x 16'6"  
Area: 193 sq. ft  
Counted as living area: Yes

Heated: Yes  
Finished: Yes  
Enclosed: Yes  
Contiguous: Yes  
Permitted: Yes  
Wet space: Yes  
Addition: No  
Conversion: No



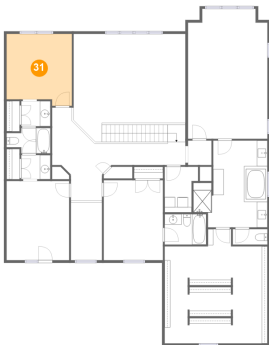
30 Floor 3 - W.I.C.



Dimensions: 19'7" x 21'9"  
Area: 375 sq. ft  
Counted as living area: Yes

Heated: Yes  
Finished: Yes  
Enclosed: Yes  
Contiguous: Yes  
Permitted: Yes  
Wet space: No  
Addition: No  
Conversion: No

31 Floor 3 - Bedroom



Dimensions: 12'5" x 13'8"  
Area: 159 sq. ft  
Counted as living area: Yes

Heated: Yes  
Finished: Yes  
Enclosed: Yes  
Contiguous: Yes  
Permitted: Yes  
Wet space: No  
Addition: No  
Conversion: No

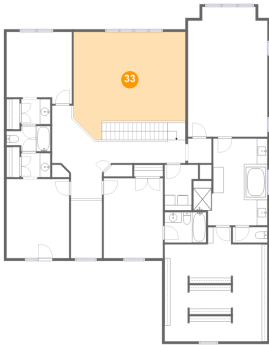
32 Floor 3 - Hall



Dimensions: 4'6" x 4'8"  
Area: 21 sq. ft  
Counted as living area: Yes

Heated: Yes  
Finished: Yes  
Enclosed: Yes  
Contiguous: Yes  
Permitted: Yes  
Wet space: No  
Addition: No  
Conversion: No

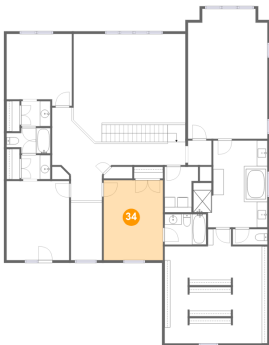
### 33 Floor 3 - Open To Below



Dimensions: 21'3" x 20'6"  
Area: 371 sq. ft  
Counted as living area: No

Heated: No  
Finished: No  
Enclosed: No  
Contiguous: Yes  
Permitted: No  
Wet space: No  
Addition: No  
Conversion: No

### 34 Floor 3 - Bedroom



Dimensions: 11'3" x 15'2"  
Area: 171 sq. ft  
Counted as living area: Yes

Heated: Yes  
Finished: Yes  
Enclosed: Yes  
Contiguous: Yes  
Permitted: Yes  
Wet space: No  
Addition: No  
Conversion: No

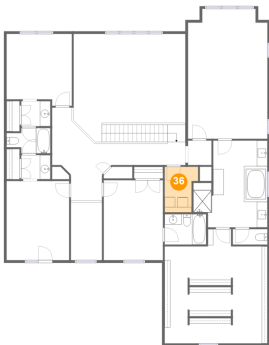
### 35 Floor 3 - Hall



Dimensions: 25'4" x 17'9"  
Area: 250 sq. ft  
Counted as living area: Yes

Heated: Yes  
Finished: Yes  
Enclosed: Yes  
Contiguous: Yes  
Permitted: Yes  
Wet space: No  
Addition: No  
Conversion: No

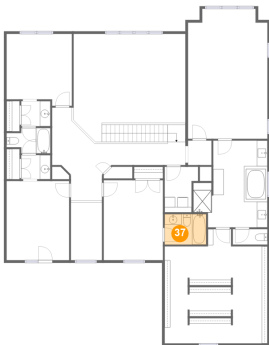
36 Floor 3 - Laundry



Dimensions: 6'4" x 8'8"  
Area: 48 sq. ft  
Counted as living area: Yes

Heated: Yes  
Finished: Yes  
Enclosed: Yes  
Contiguous: Yes  
Permitted: Yes  
Wet space: No  
Addition: No  
Conversion: No

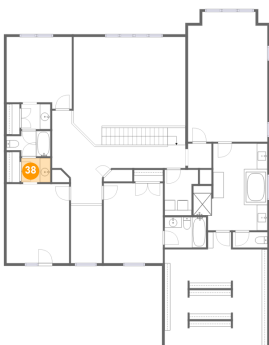
37 Floor 3 - Bath



Dimensions: 7'11" x 5'9"  
Area: 46 sq. ft  
Counted as living area: Yes

Heated: Yes  
Finished: Yes  
Enclosed: Yes  
Contiguous: Yes  
Permitted: Yes  
Wet space: Yes  
Addition: No  
Conversion: No

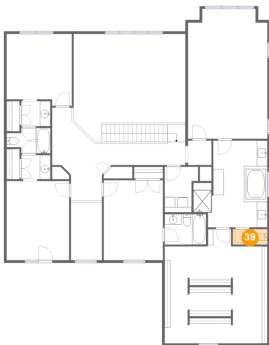
38 Floor 3 - Bath



Dimensions: 5'6" x 4'7"  
Area: 25 sq. ft  
Counted as living area: Yes

Heated: Yes  
Finished: Yes  
Enclosed: Yes  
Contiguous: Yes  
Permitted: Yes  
Wet space: Yes  
Addition: No  
Conversion: No

39 Floor 3 - WC



Dimensions: 6'7" x 2'11"  
Area: 19 sq. ft  
Counted as living area: Yes

Heated: Yes  
Finished: Yes  
Enclosed: Yes  
Contiguous: Yes  
Permitted: Yes  
Wet space: Yes  
Addition: No  
Conversion: No

40 Floor 3 - Open To Below



Dimensions: 5'11" x 11'0"  
Area: 65 sq. ft  
Counted as living area: No

Heated: No  
Finished: No  
Enclosed: No  
Contiguous: Yes  
Permitted: No  
Wet space: No  
Addition: No  
Conversion: No