

Home data report

711 Kris Ct, White Rock, NM, US




Total Area: 2877 sq. ft

Below Ground: 719 sq. ft, 1st Floor: 1775 sq. ft, 2nd Floor: 383 sq. ft

Excluded: Utility 40 sq. ft, Garage 443 sq. ft, Screened porch 281 sq. ft, Porch 32 sq. ft, Walls: 255 sq. ft

Property summary

 **3** Floors

 **5** Bedrooms

 **2** Bathrooms

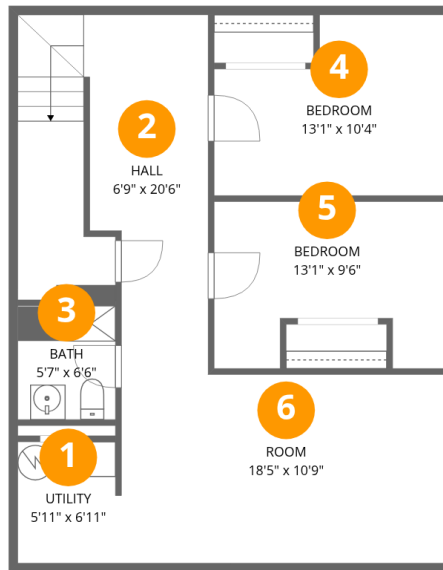
Home data report

711 Kris Ct, White Rock, NM, US

 **1**
Half baths

 **1**
Garages

711 Kris Ct, White Rock, NM, US



Room dimensions

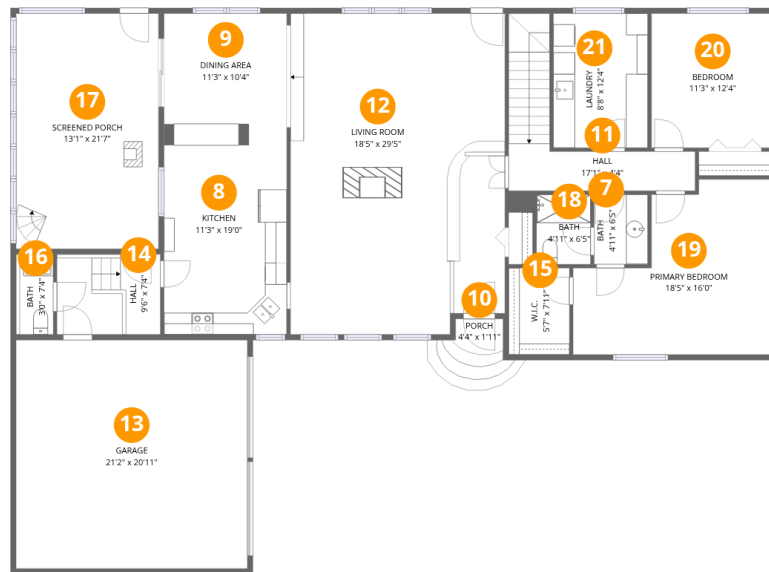
Floor 1 Below grade

Total: 719sqft Excluded: 40sqft

#		Dimensions	sqft	Counted as living area
1	Utility	5'11" x 6'11"	40 sq. ft	No
2	Hall	6'9" x 20'6"	192 sq. ft	Yes
3	Bath	5'7" x 6'6"	36 sq. ft	Yes
4	Bedroom	13'1" x 10'4"	117 sq. ft	Yes
5	Bedroom	13'1" x 9'6"	106 sq. ft	Yes
6	Room	18'5" x 10'9"	198 sq. ft	Yes

Home data report

711 Kris Ct, White Rock, NM, US



Room dimensions

Floor 2

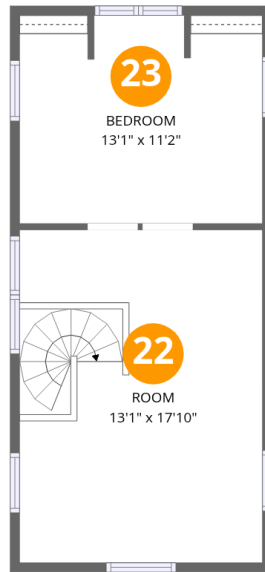
Total: 1775sqft Excluded: 756sqft

#		Dimensions	sqft	Counted as living area
7	Bath	4'11" x 6'5"	31 sq. ft	Yes
8	Kitchen	11'3" x 19'0"	214 sq. ft	Yes
9	Dining Area	11'3" x 10'4"	117 sq. ft	Yes
10	Porch	4'4" x 1'11"	32 sq. ft	No
11	Hall	17'1" x 4'4"	109 sq. ft	Yes
12	Living Room	18'5" x 29'5"	568 sq. ft	Yes
13	Garage	21'2" x 20'11"	443 sq. ft	No
14	Hall	9'6" x 7'4"	70 sq. ft	Yes
15	W.I.C.	5'7" x 7'11"	44 sq. ft	Yes
16	Bath	3'0" x 7'4"	25 sq. ft	Yes
17	Screened Porch	13'1" x 21'7"	281 sq. ft	No

Home data report

711 Kris Ct,White Rock,NM,US

#		Dimensions	sqft	Counted as living area
18	Bath	4'11" x 6'5"	32 sq. ft	Yes
19	Primary Bedroom	18'5" x 16'0"	231 sq. ft	Yes
20	Bedroom	11'3" x 12'4"	138 sq. ft	Yes
21	Laundry	8'8" x 12'4"	106 sq. ft	Yes



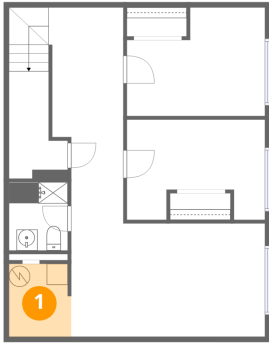
Room dimensions

Floor 3

Total:383sqft Excluded: 0sqft

#		Dimensions	sqft	Counted as living area
22	Room	13'1" x 17'10"	233 sq. ft	Yes
23	Bedroom	13'1" x 11'2"	144 sq. ft	Yes

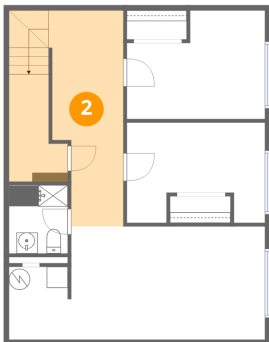
1 Floor 1 - Utility



Dimensions: 5'11" x 6'11"
Area: 40 sq. ft
Counted as living area: No

Heated: Yes
Finished: No
Enclosed: Yes
Contiguous: Yes
Permitted: Yes
Wet space: No
Addition: No
Conversion: No

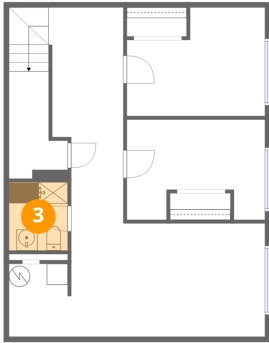
2 Floor 1 - Hall



Dimensions: 6'9" x 20'6"
Area: 192 sq. ft
Counted as living area: Yes

Heated: Yes
Finished: Yes
Enclosed: Yes
Contiguous: Yes
Permitted: Yes
Wet space: No
Addition: No
Conversion: No

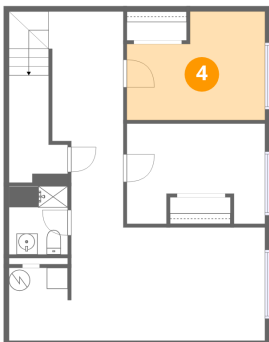
3 Floor 1 - Bath



Dimensions: 5'7" x 6'6"
Area: 36 sq. ft
Counted as living area: Yes

Heated: Yes
Finished: Yes
Enclosed: Yes
Contiguous: Yes
Permitted: Yes
Wet space: Yes
Addition: No
Conversion: No

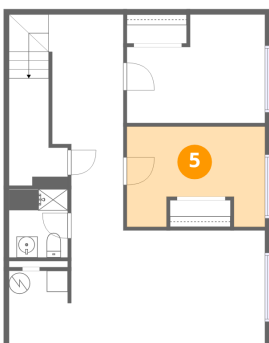
4 Floor 1 - Bedroom



Dimensions: 13'1" x 10'4"
Area: 117 sq. ft
Counted as living area: Yes

Heated: Yes
Finished: Yes
Enclosed: Yes
Contiguous: Yes
Permitted: Yes
Wet space: No
Addition: No
Conversion: No

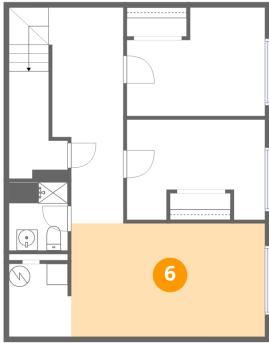
5 Floor 1 - Bedroom



Dimensions: 13'1" x 9'6"
Area: 106 sq. ft
Counted as living area: Yes

Heated: Yes
Finished: Yes
Enclosed: Yes
Contiguous: Yes
Permitted: Yes
Wet space: No
Addition: No
Conversion: No

6 Floor 1 - Room



Dimensions: 18'5" x 10'9"
Area: 198 sq. ft
Counted as living area: Yes

Heated: Yes
Finished: Yes
Enclosed: Yes
Contiguous: Yes
Permitted: Yes
Wet space: No
Addition: No
Conversion: No

7 Floor 2 - Bath



Dimensions: 4'11" x 6'5"
Area: 31 sq. ft
Counted as living area: Yes

Heated: Yes
Finished: Yes
Enclosed: Yes
Contiguous: Yes
Permitted: Yes
Wet space: Yes
Addition: No
Conversion: No

8 Floor 2 - Kitchen



Dimensions: 11'3" x 19'0"
Area: 214 sq. ft
Counted as living area: Yes

Heated: Yes
Finished: Yes
Enclosed: Yes
Contiguous: Yes
Permitted: Yes
Wet space: No
Addition: No
Conversion: No

9 Floor 2 - Dining Area



Dimensions: 11'3" x 10'4"
Area: 117 sq. ft
Counted as living area: Yes

Heated: Yes
Finished: Yes
Enclosed: Yes
Contiguous: Yes
Permitted: Yes
Wet space: No
Addition: No
Conversion: No

10 Floor 2 - Porch



Dimensions: 4'4" x 1'11"
Area: 32 sq. ft
Counted as living area: No

Heated: No
Finished: No
Enclosed: No
Contiguous: Yes
Permitted: Yes
Wet space: No
Addition: No
Conversion: No

11 Floor 2 - Hall



Dimensions: 17'1" x 4'4"
Area: 109 sq. ft
Counted as living area: Yes

Heated: Yes
Finished: Yes
Enclosed: Yes
Contiguous: Yes
Permitted: Yes
Wet space: No
Addition: No
Conversion: No

12 Floor 2 - Living Room



Dimensions: 18'5" x 29'5"
Area: 568 sq. ft
Counted as living area: Yes

Heated: Yes
Finished: Yes
Enclosed: Yes
Contiguous: Yes
Permitted: Yes
Wet space: No
Addition: No
Conversion: No

13 Floor 2 - Garage



Dimensions: 21'2" x 20'11"
Area: 443 sq. ft
Counted as living area: No

Heated: No
Finished: No
Enclosed: Yes
Contiguous: Yes
Permitted: Yes
Wet space: No
Addition: No
Conversion: No

14 Floor 2 - Hall



Dimensions: 9'6" x 7'4"
Area: 70 sq. ft
Counted as living area: Yes

Heated: Yes
Finished: Yes
Enclosed: Yes
Contiguous: Yes
Permitted: Yes
Wet space: No
Addition: No
Conversion: No

15 Floor 2 - W.I.C.



Dimensions: 5'7" x 7'11"
Area: 44 sq. ft
Counted as living area: Yes

Heated: Yes
Finished: Yes
Enclosed: Yes
Contiguous: Yes
Permitted: Yes
Wet space: No
Addition: No
Conversion: No

16 Floor 2 - Bath



Dimensions: 3'0" x 7'4"
Area: 25 sq. ft
Counted as living area: Yes

Heated: Yes
Finished: Yes
Enclosed: Yes
Contiguous: Yes
Permitted: Yes
Wet space: Yes
Addition: No
Conversion: No

17 Floor 2 - Screened Porch



Dimensions: 13'1" x 21'7"
Area: 281 sq. ft
Counted as living area: No

Heated: No
Finished: No
Enclosed: No
Contiguous: Yes
Permitted: Yes
Wet space: No
Addition: No
Conversion: No

18 Floor 2 - Bath



Dimensions: 4'11" x 6'5"
Area: 32 sq. ft
Counted as living area: Yes

Heated: Yes
Finished: Yes
Enclosed: Yes
Contiguous: Yes
Permitted: Yes
Wet space: Yes
Addition: No
Conversion: No

19 Floor 2 - Primary Bedroom



Dimensions: 18'5" x 16'0"
Area: 231 sq. ft
Counted as living area: Yes

Heated: Yes
Finished: Yes
Enclosed: Yes
Contiguous: Yes
Permitted: Yes
Wet space: No
Addition: No
Conversion: No

20 Floor 2 - Bedroom



Dimensions: 11'3" x 12'4"
Area: 138 sq. ft
Counted as living area: Yes

Heated: Yes
Finished: Yes
Enclosed: Yes
Contiguous: Yes
Permitted: Yes
Wet space: No
Addition: No
Conversion: No

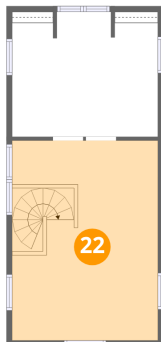
21 Floor 2 - Laundry



Dimensions: 8'8" x 12'4"
Area: 106 sq. ft
Counted as living area: Yes

Heated: Yes
Finished: Yes
Enclosed: Yes
Contiguous: Yes
Permitted: Yes
Wet space: No
Addition: No
Conversion: No

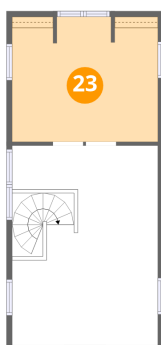
22 Floor 3 - Room



Dimensions: 13'1" x 17'10"
Area: 233 sq. ft
Counted as living area: No

Heated: Yes
Finished: Yes
Enclosed: Yes
Contiguous: No
Permitted: Yes
Wet space: No
Addition: No
Conversion: No

23 Floor 3 - Bedroom



Dimensions: 13'1" x 11'2"
Area: 144 sq. ft
Counted as living area: No

Heated: Yes
Finished: Yes
Enclosed: Yes
Contiguous: No
Permitted: Yes
Wet space: No
Addition: No
Conversion: No