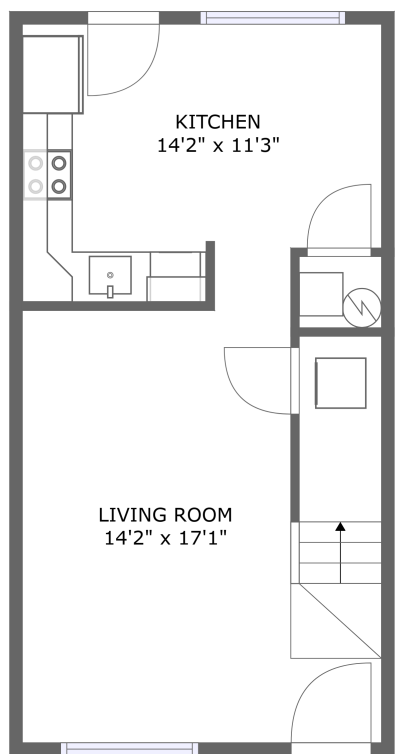
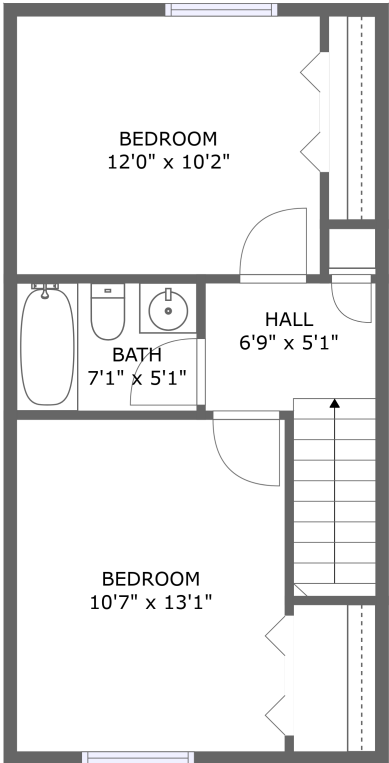


Home report

1801 Bluemont Avenue Southwest, Roanoke, Virginia 24015, United States




FLOOR 1




FLOOR 2


Property summary




**0**  
Garages




**2**  
Bedrooms




**1**  
Bathrooms




**0**  
Half baths



**2**  
Floors



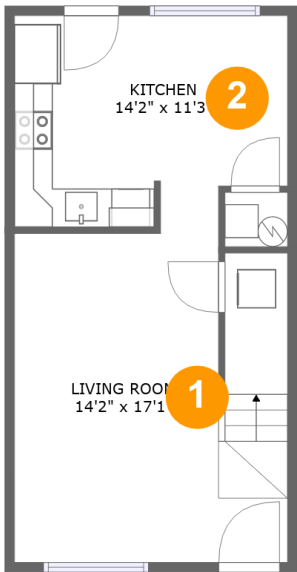
**901**  
Gross living  
area sqft



**901**  
Total sqft

Home report

1801 Bluemont Avenue Southwest, Roanoke, Virginia 24015, United States



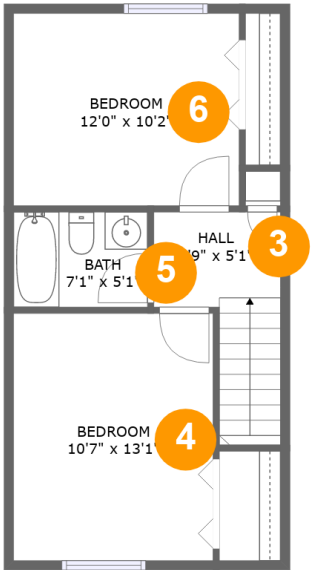
Room dimensions

Floor 1 Total sqft: 445    Living area: 445

#		Max Dimensions	sqft	Included
1	Living Room	14'2" x 17'1"	236 sq. ft	Yes
2	Kitchen	14'2" x 11'3"	148 sq. ft	Yes

Home report

1801 Bluemont Avenue Southwest, Roanoke, Virginia 24015, United States



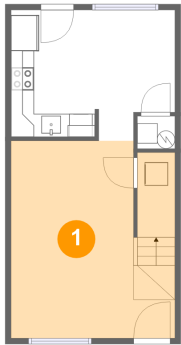
Room dimensions

Floor 2 Total sqft: 456    Living area: 456

#		Max Dimensions	sqft	Included
3	Hall	6'9" x 5'1"	58 sq. ft	Yes
4	Bedroom	10'7" x 13'1"	139 sq. ft	Yes
5	Bath	7'1" x 5'1"	36 sq. ft	Yes
6	Bedroom	12'0" x 10'2"	122 sq. ft	Yes

1801 Bluemont Avenue Southwest, Roanoke, Virginia 24015,  
United States

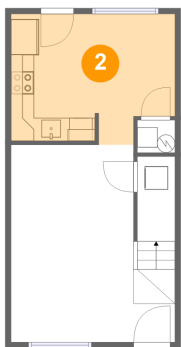
1 Floor 1 - Living Room



Max Dimensions: 14'2" x 17'1"  
Calculated Area: 236 sq. ft  
Included: Yes

Heated: Yes  
Finished: Yes  
Enclosed: Yes  
Contiguous: Yes  
Permitted: Yes  
Wet space: No  
Addition: No  
Conversion: No

2 Floor 1 - Kitchen

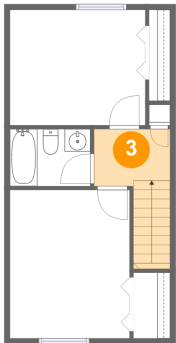


Max Dimensions: 14'2" x 11'3"  
Calculated Area: 148 sq. ft  
Included: Yes

Heated: Yes  
Finished: Yes  
Enclosed: Yes  
Contiguous: Yes  
Permitted: Yes  
Wet space: No  
Addition: No  
Conversion: No

1801 Bluemont Avenue Southwest, Roanoke, Virginia 24015,  
United States

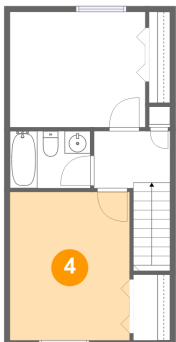
3 Floor 2 - Hall



Max Dimensions: 6'9" x 5'1"  
Calculated Area: 58 sq. ft  
Included: Yes

Heated: Yes  
Finished: Yes  
Enclosed: Yes  
Contiguous: Yes  
Permitted: Yes  
Wet space: No  
Addition: No  
Conversion: No

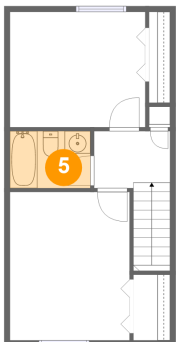
4 Floor 2 - Bedroom



Max Dimensions: 10'7" x 13'1"  
Calculated Area: 139 sq. ft  
Included: Yes

Heated: Yes  
Finished: Yes  
Enclosed: Yes  
Contiguous: Yes  
Permitted: Yes  
Wet space: No  
Addition: No  
Conversion: No

5 Floor 2 - Bath

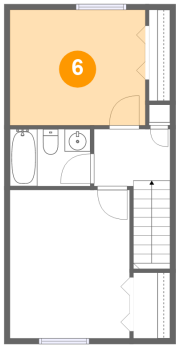


Max Dimensions: 7'1" x 5'1"  
Calculated Area: 36 sq. ft  
Included: Yes

Heated: Yes  
Finished: Yes  
Enclosed: Yes  
Contiguous: Yes  
Permitted: Yes  
Wet space: Yes  
Addition: No  
Conversion: No

1801 Bluemont Avenue Southwest, Roanoke, Virginia 24015,  
United States

6 Floor 2 - Bedroom



Max Dimensions: 12'0" x 10'2"  
Calculated Area: 122 sq. ft  
Included: Yes

Heated: Yes  
Finished: Yes  
Enclosed: Yes  
Contiguous: Yes  
Permitted: Yes  
Wet space: No  
Addition: No  
Conversion: No