

Home report

957 Whittington Drive, Geneva, Kane County, Illinois, United States, 60134



Total Area: 1967 sq. ft

Below Ground: 248 sq. ft, Floor 2: 857 sq. ft, Floor 3: 862 sq. ft
Excluded: Below150cm 127 sq. ft, Basement 480 sq. ft, Garage 357 sq. ft,
Embeddedwindow 6 sq. ft, Fireplace 12 sq. ft, Low Ceiling 78 sq. ft, Attic 56 sq. ft, Walls:
230 sq. ft

Property summary

 **3** Floors

 **4** Bedrooms

 **2** Bathrooms

Home report

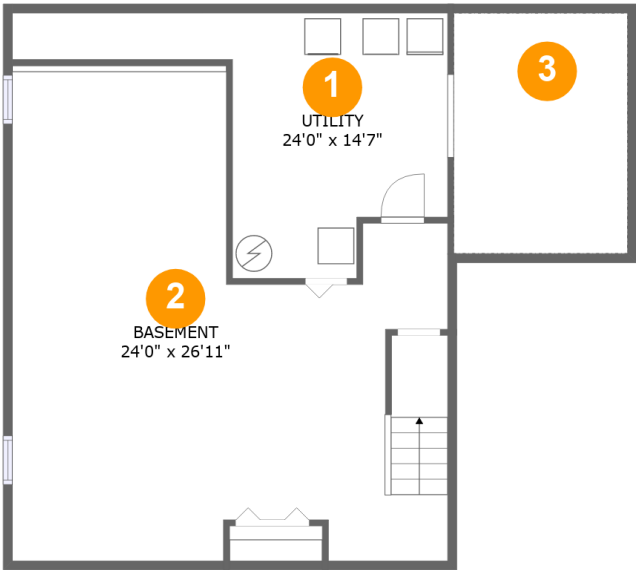
957 Whittington Drive, Geneva, Kane County, Illinois, United States, 60134

 **1**
Half baths

 **1**
Garages

Home report

957 Whittington Drive, Geneva, Kane County, Illinois, United States, 60134



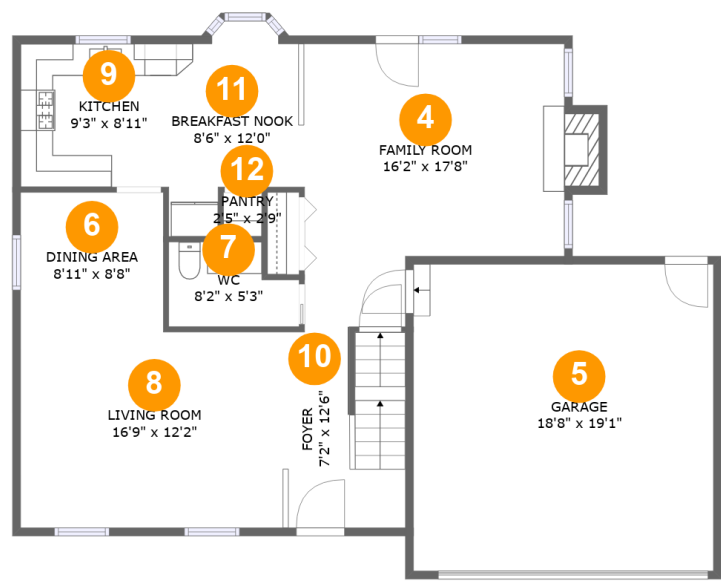
Room dimensions

Floor 1 Below ground Total:248sqft Excluded: 607sqft

#		Max Dimensions	sqft	Included
1	Utility	24'0" x 14'7"	189 sq. ft	Yes
2	Basement	24'0" x 26'11"	480 sq. ft	No
3	Crawl Space	9'7" x 13'3"	127 sq. ft	No

Home report

957 Whittington Drive, Geneva, Kane County, Illinois, United States, 60134

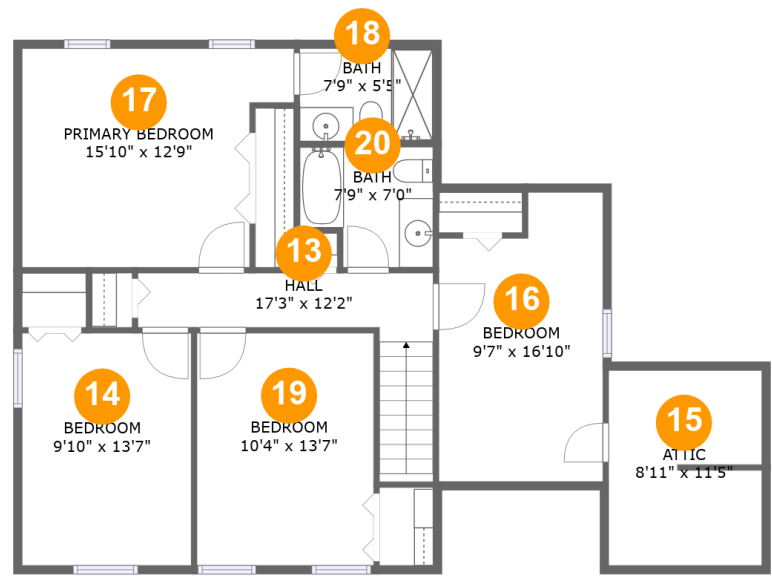


Room dimensions

Floor 2 Total:857sqft Excluded: 375sqft

#		Max Dimensions	sqft	Included
4	Family Room	16'2" x 17'8"	252 sq. ft	Yes
5	Garage	18'8" x 19'1"	357 sq. ft	No
6	Dining Area	8'11" x 8'8"	77 sq. ft	Yes
7	WC	8'2" x 5'3"	37 sq. ft	Yes
8	Living Room	16'9" x 12'2"	205 sq. ft	Yes
9	Kitchen	9'3" x 8'11"	82 sq. ft	Yes
10	Foyer	7'2" x 12'6"	87 sq. ft	Yes
11	Breakfast Nook	8'6" x 12'0"	85 sq. ft	Yes
12	Pantry	2'5" x 2'9"	7 sq. ft	Yes

957 Whittington Drive, Geneva, Kane County, Illinois, United States, 60134



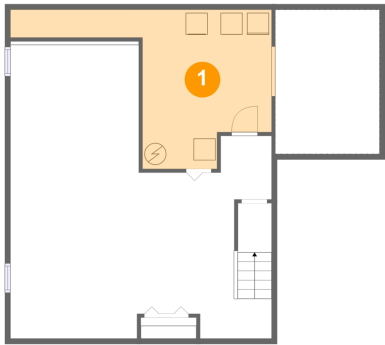
Room dimensions

Floor 3 Total:862sqft Excluded: 134sqft

#		Max Dimensions	sqft	Included
13	Hall	17'3" x 12'2"	83 sq. ft	Yes
14	Bedroom	9'10" x 13'7"	134 sq. ft	Yes
15	Attic	8'11" x 11'5"	54 sq. ft	No
16	Bedroom	9'7" x 16'10"	116 sq. ft	Yes
17	Primary Bedroom	15'10" x 12'9"	178 sq. ft	Yes
18	Bath	7'9" x 5'5"	42 sq. ft	Yes
19	Bedroom	10'4" x 13'7"	140 sq. ft	Yes
20	Bath	7'9" x 7'0"	49 sq. ft	Yes

957 Whittington Drive, Geneva, Kane County, Illinois, United States, 60134

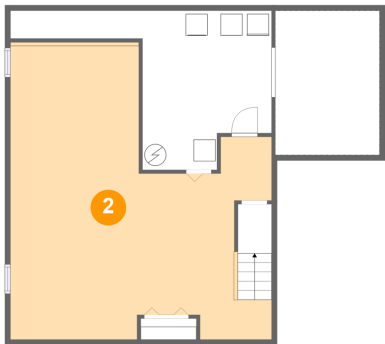
1 Floor 1 - Utility



Max Dimensions: 24'0" x 14'7"
Calculated Area: 189 sq. ft
Included: No

Heated: Yes
Finished: Yes
Enclosed: Yes
Contiguous: No
Permitted: Yes
Wet space: No
Addition: No
Conversion: No

2 Floor 1 - Basement



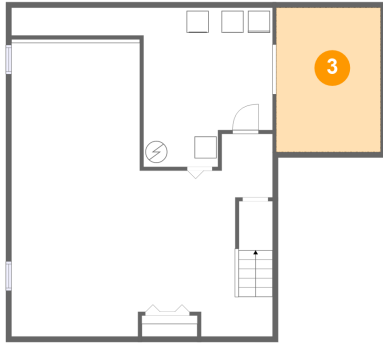
Max Dimensions: 24'0" x 26'11"
Calculated Area: 480 sq. ft
Included: No

Heated: Yes
Finished: No
Enclosed: Yes
Contiguous: Yes
Permitted: Yes
Wet space: No
Addition: No
Conversion: No

Home report

957 Whittington Drive, Geneva, Kane County, Illinois, United States, 60134

3 Floor 1 - Crawl Space



Max Dimensions: 9'7" x 13'3"
Calculated Area: 127 sq. ft
Included: No

Heated: No
Finished: No
Enclosed: No
Contiguous: Yes
Permitted: No
Wet space: No
Addition: No
Conversion: No

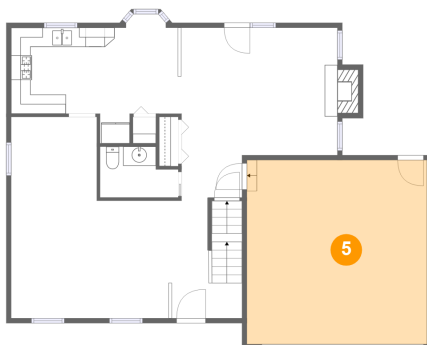
4 Floor 2 - Family Room



Max Dimensions: 16'2" x 17'8"
Calculated Area: 252 sq. ft
Included: Yes

Heated: Yes
Finished: Yes
Enclosed: Yes
Contiguous: Yes
Permitted: Yes
Wet space: No
Addition: No
Conversion: No

5 Floor 2 - Garage

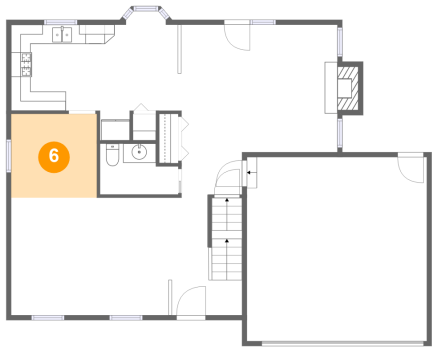


Max Dimensions: 18'8" x 19'1"
Calculated Area: 357 sq. ft
Included: No

Heated: No
Finished: No
Enclosed: Yes
Contiguous: Yes
Permitted: Yes
Wet space: No
Addition: No
Conversion: No

957 Whittington Drive, Geneva, Kane County, Illinois, United States, 60134

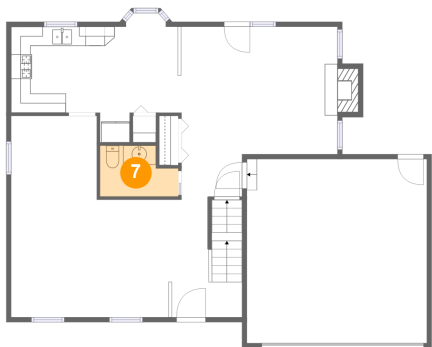
6 Floor 2 - Dining Area



Max Dimensions: 8'11" x 8'8"
Calculated Area: 77 sq. ft
Included: Yes

Heated: Yes
Finished: Yes
Enclosed: Yes
Contiguous: Yes
Permitted: Yes
Wet space: No
Addition: No
Conversion: No

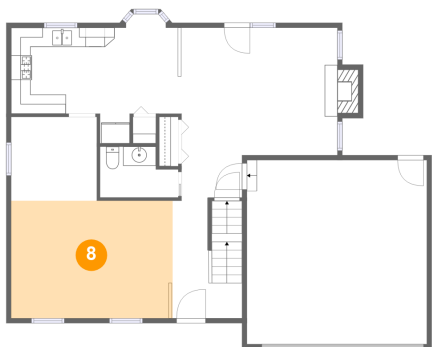
7 Floor 2 - WC



Max Dimensions: 8'2" x 5'3"
Calculated Area: 37 sq. ft
Included: Yes

Heated: Yes
Finished: Yes
Enclosed: Yes
Contiguous: Yes
Permitted: Yes
Wet space: Yes
Addition: No
Conversion: No

8 Floor 2 - Living Room

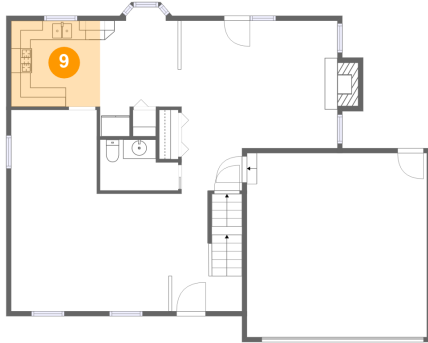


Max Dimensions: 16'9" x 12'2"
Calculated Area: 205 sq. ft
Included: Yes

Heated: Yes
Finished: Yes
Enclosed: Yes
Contiguous: Yes
Permitted: Yes
Wet space: No
Addition: No
Conversion: No

957 Whittington Drive, Geneva, Kane County, Illinois, United States, 60134

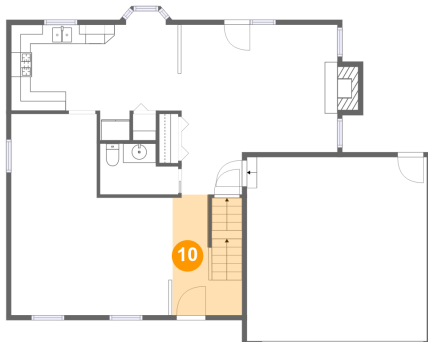
9 Floor 2 - Kitchen



Max Dimensions: 9'3" x 8'11"
Calculated Area: 82 sq. ft
Included: Yes

Heated: Yes
Finished: Yes
Enclosed: Yes
Contiguous: Yes
Permitted: Yes
Wet space: No
Addition: No
Conversion: No

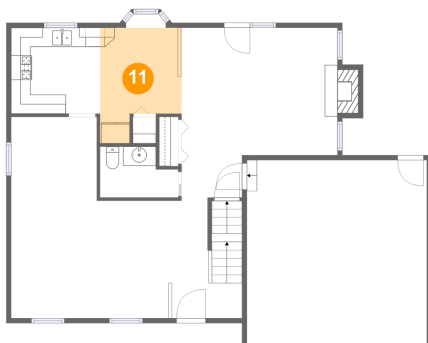
10 Floor 2 - Foyer



Max Dimensions: 7'2" x 12'6"
Calculated Area: 87 sq. ft
Included: Yes

Heated: Yes
Finished: Yes
Enclosed: Yes
Contiguous: Yes
Permitted: Yes
Wet space: No
Addition: No
Conversion: No

11 Floor 2 - Breakfast Nook

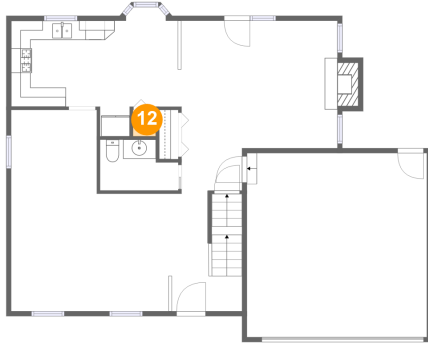


Max Dimensions: 8'6" x 12'0"
Calculated Area: 85 sq. ft
Included: Yes

Heated: Yes
Finished: Yes
Enclosed: Yes
Contiguous: Yes
Permitted: Yes
Wet space: No
Addition: No
Conversion: No

957 Whittington Drive, Geneva, Kane County, Illinois, United States, 60134

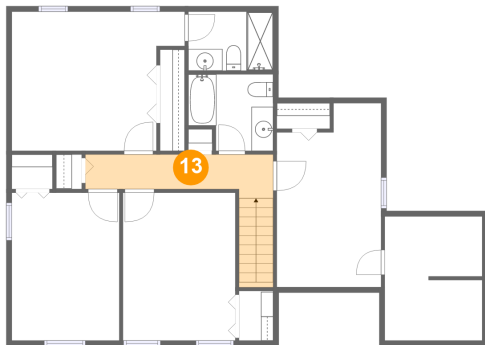
12 Floor 2 - Pantry



Max Dimensions: 2'5" x 2'9"
Calculated Area: 7 sq. ft
Included: Yes

Heated: Yes
Finished: Yes
Enclosed: Yes
Contiguous: Yes
Permitted: Yes
Wet space: No
Addition: No
Conversion: No

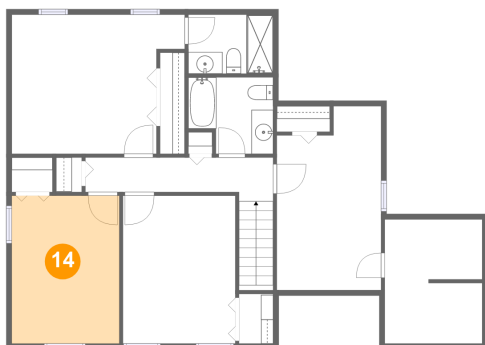
13 Floor 3 - Hall



Max Dimensions: 17'3" x 12'2"
Calculated Area: 83 sq. ft
Included: Yes

Heated: Yes
Finished: Yes
Enclosed: Yes
Contiguous: Yes
Permitted: Yes
Wet space: No
Addition: No
Conversion: No

14 Floor 3 - Bedroom

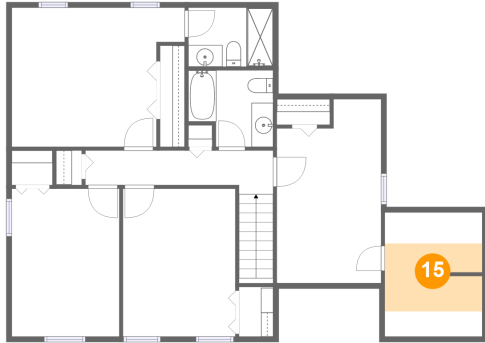


Max Dimensions: 9'10" x 13'7"
Calculated Area: 134 sq. ft
Included: Yes

Heated: Yes
Finished: Yes
Enclosed: Yes
Contiguous: Yes
Permitted: Yes
Wet space: No
Addition: No
Conversion: No

957 Whittington Drive, Geneva, Kane County, Illinois, United States, 60134

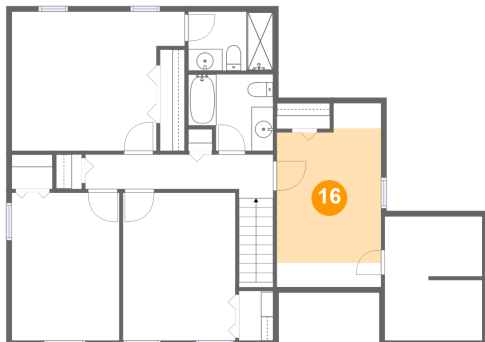
15 Floor 3 - Attic



Max Dimensions: 8'11" x 11'5"
Calculated Area: 54 sq. ft
Included: No

Heated: No
Finished: No
Enclosed: Yes
Contiguous: Yes
Permitted: Yes
Wet space: No
Addition: No
Conversion: No

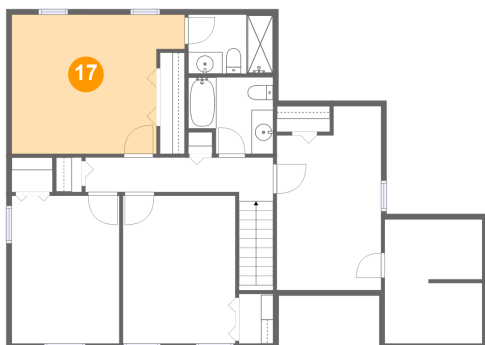
16 Floor 3 - Bedroom



Max Dimensions: 9'7" x 16'10"
Calculated Area: 116 sq. ft
Included: Yes

Heated: Yes
Finished: Yes
Enclosed: Yes
Contiguous: Yes
Permitted: Yes
Wet space: No
Addition: No
Conversion: No

17 Floor 3 - Primary Bedroom



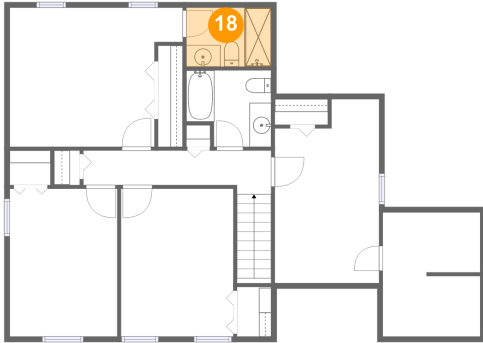
Max Dimensions: 15'10" x 12'9"
Calculated Area: 178 sq. ft
Included: Yes

Heated: Yes
Finished: Yes
Enclosed: Yes
Contiguous: Yes
Permitted: Yes
Wet space: No
Addition: No
Conversion: No

Home report

957 Whittington Drive, Geneva, Kane County, Illinois, United States, 60134

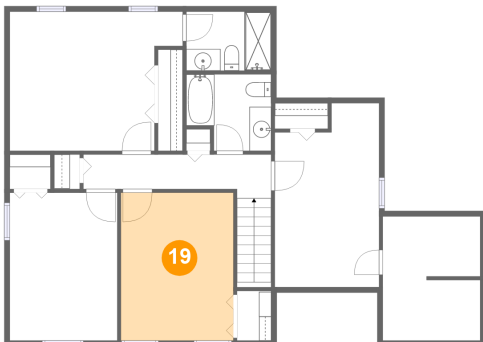
18 Floor 3 - Bath



Max Dimensions: 7'9" x 5'5"
Calculated Area: 42 sq. ft
Included: Yes

Heated: Yes
Finished: Yes
Enclosed: Yes
Contiguous: Yes
Permitted: Yes
Wet space: Yes
Addition: No
Conversion: No

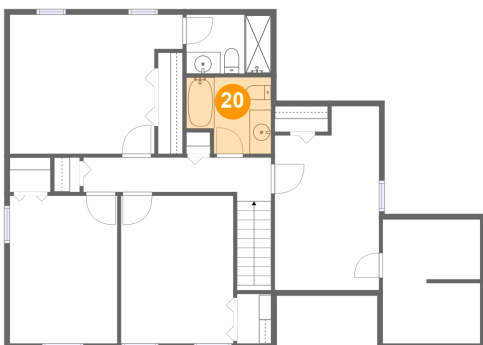
19 Floor 3 - Bedroom



Max Dimensions: 10'4" x 13'7"
Calculated Area: 140 sq. ft
Included: Yes

Heated: Yes
Finished: Yes
Enclosed: Yes
Contiguous: Yes
Permitted: Yes
Wet space: No
Addition: No
Conversion: No

20 Floor 3 - Bath



Max Dimensions: 7'9" x 7'0"
Calculated Area: 49 sq. ft
Included: Yes

Heated: Yes
Finished: Yes
Enclosed: Yes
Contiguous: Yes
Permitted: Yes
Wet space: Yes
Addition: No
Conversion: No