


Home report

3848 Via Orchard Road, Critz, Patrick County, Virginia, United States, 24082




Property summary




0

Garages




3

Bedrooms



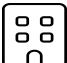
3

Bathrooms




1

Half baths




3

Floors



1,887

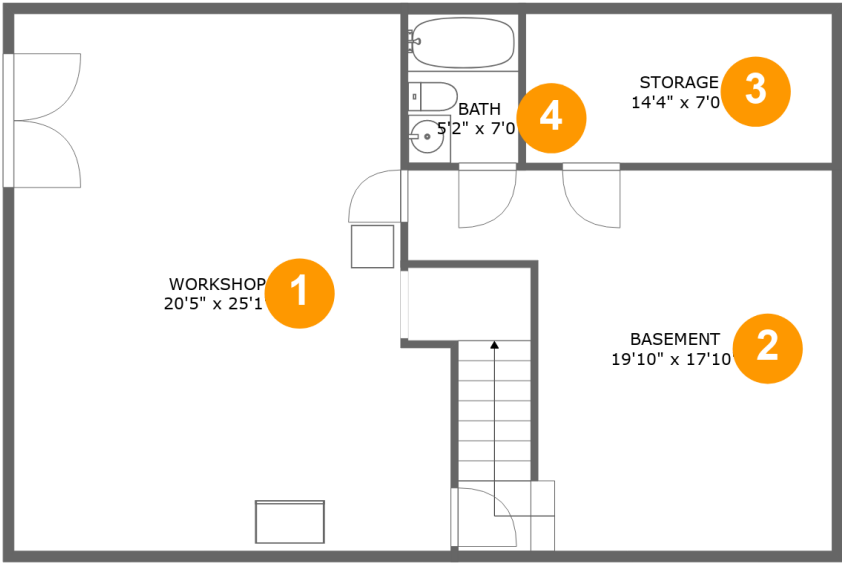
Gross living area sqft



4,485

Total sqft

3848 Via Orchard Road, Critz, Patrick County, Virginia, United States, 24082



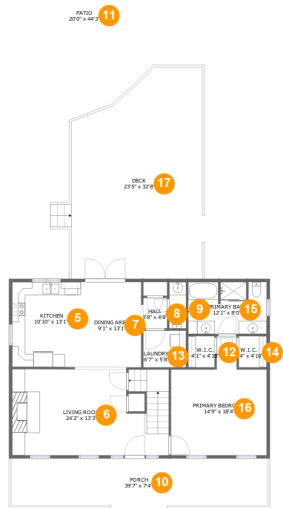
Room dimensions

Floor 1 Total sqft: 1027 Living area: 0

#		Max Dimensions	sqft	Included
1	Workshop	20'5" x 25'1"	477 sq. ft	No
2	Basement	19'10" x 17'10"	325 sq. ft	No
3	Storage	14'4" x 7'0"	100 sq. ft	No
4	Bath	5'2" x 7'0"	36 sq. ft	No

Home report

3848 Via Orchard Road, Critz, Patrick County, Virginia, United States, 24082



Room dimensions

Floor 2

Total sqft: 2605

Living area: 1116

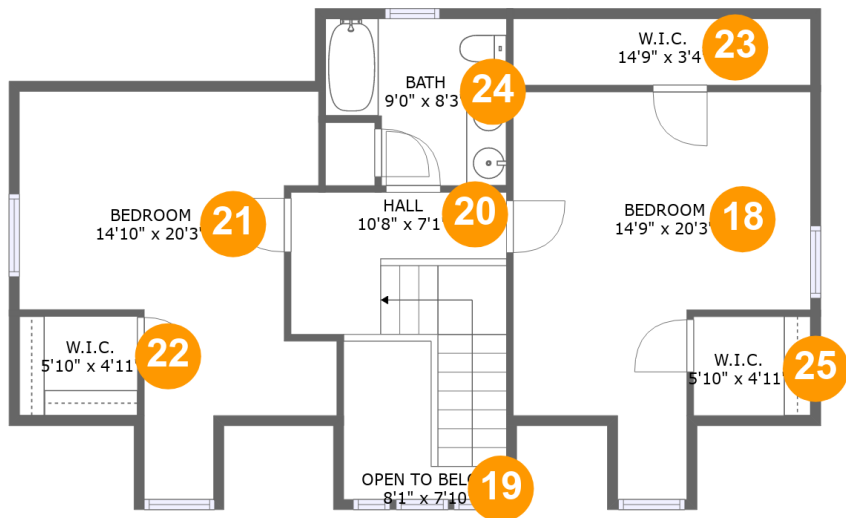
#		Max Dimensions	sqft	Included
5	Kitchen	10'10" x 13'1"	142 sq. ft	Yes
6	Living Room	24'2" x 13'3"	308 sq. ft	Yes
7	Dining Area	9'1" x 13'1"	119 sq. ft	Yes
8	Hall	3'8" x 4'8"	17 sq. ft	Yes
9	WC	2'7" x 7'2"	18 sq. ft	Yes
10	Porch	39'7" x 7'4"	290 sq. ft	No
11	Patio	20'0" x 44'3"	593 sq. ft	No
12	W.I.C.	4'1" x 4'10"	20 sq. ft	Yes
13	Laundry	6'7" x 5'8"	37 sq. ft	Yes
14	W.I.C.	4'4" x 4'10"	21 sq. ft	Yes
15	Primary Bath	12'1" x 8'0"	95 sq. ft	Yes

Home report

3848 Via Orchard Road, Critz, Patrick County, Virginia, United States, 24082

#		Max Dimensions	sqft	Included
16	Primary Bedroom	14'9" x 18'4"	211 sq. ft	Yes
17	Deck	23'5" x 32'8"	606 sq. ft	No

3848 Via Orchard Road, Critz, Patrick County, Virginia, United States, 24082



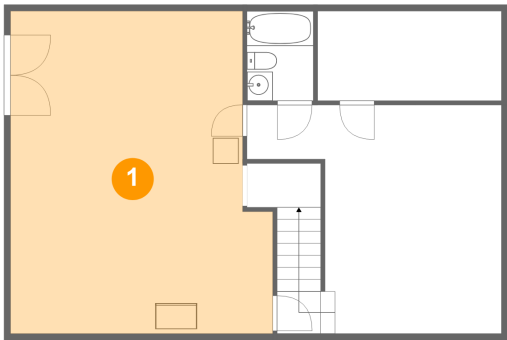
Room dimensions

Floor 3 Total sqft: 853 Living area: 771

#		Max Dimensions	sqft	Included
18	Bedroom	14'9" x 20'3"	219 sq. ft	Yes
19	Open To Below	8'1" x 7'10"	40 sq. ft	No
20	Hall	10'8" x 7'1"	101 sq. ft	Yes
21	Bedroom	14'10" x 20'3"	211 sq. ft	Yes
22	W.I.C.	5'10" x 4'11"	29 sq. ft	Yes
23	W.I.C.	14'9" x 3'4"	49 sq. ft	Yes
24	Bath	9'0" x 8'3"	65 sq. ft	Yes
25	W.I.C.	5'10" x 4'11"	28 sq. ft	No

3848 Via Orchard Road, Critz, Patrick County, Virginia, United States, 24082

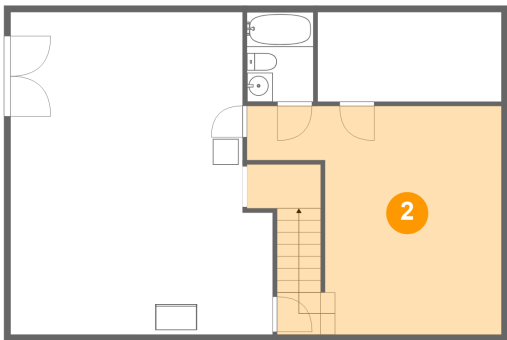
1 Floor 1 - Workshop



Max Dimensions: 20'5" x 25'1"
Calculated Area: 477 sq. ft
Included: No

Heated: No
Finished: No
Enclosed: Yes
Contiguous: No
Permitted: Yes
Wet space: No
Addition: No
Conversion: No

2 Floor 1 - Basement



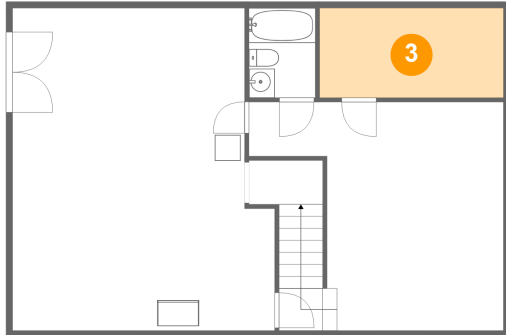
Max Dimensions: 19'10" x 17'10"
Calculated Area: 325 sq. ft
Included: No

Heated: No
Finished: No
Enclosed: Yes
Contiguous: Yes
Permitted: Yes
Wet space: No
Addition: No
Conversion: No

Home report

3848 Via Orchard Road, Critz, Patrick County, Virginia, United States, 24082

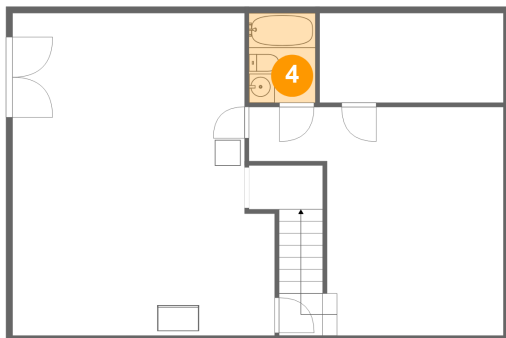
3 Floor 1 - Storage



Max Dimensions: 14'4" x 7'0"
Calculated Area: 100 sq. ft
Included: No

Heated: No
Finished: No
Enclosed: No
Contiguous: Yes
Permitted: Yes
Wet space: No
Addition: No
Conversion: No

4 Floor 1 - Bath



Max Dimensions: 5'2" x 7'0"
Calculated Area: 36 sq. ft
Included: No

Heated: Yes
Finished: Yes
Enclosed: Yes
Contiguous: No
Permitted: Yes
Wet space: Yes
Addition: No
Conversion: No

5 Floor 2 - Kitchen



Max Dimensions: 10'10" x 13'1"
Calculated Area: 142 sq. ft
Included: Yes

Heated: Yes
Finished: Yes
Enclosed: Yes
Contiguous: Yes
Permitted: Yes
Wet space: No
Addition: No
Conversion: No

3848 Via Orchard Road, Critz, Patrick County, Virginia, United States, 24082

6 Floor 2 - Living Room



Max Dimensions: 24'2" x 13'3"
Calculated Area: 308 sq. ft
Included: Yes

Heated: Yes
Finished: Yes
Enclosed: Yes
Contiguous: Yes
Permitted: Yes
Wet space: No
Addition: No
Conversion: No

7 Floor 2 - Dining Area



Max Dimensions: 9'1" x 13'1"
Calculated Area: 119 sq. ft
Included: Yes

Heated: Yes
Finished: Yes
Enclosed: Yes
Contiguous: Yes
Permitted: Yes
Wet space: No
Addition: No
Conversion: No

8 Floor 2 - Hall



Max Dimensions: 3'8" x 4'8"
Calculated Area: 17 sq. ft
Included: Yes

Heated: Yes
Finished: Yes
Enclosed: Yes
Contiguous: Yes
Permitted: Yes
Wet space: No
Addition: No
Conversion: No

3848 Via Orchard Road, Critz, Patrick County, Virginia, United States, 24082

9 Floor 2 - WC



Max Dimensions: 2'7" x 7'2"
Calculated Area: 18 sq. ft
Included: Yes

Heated: Yes
Finished: Yes
Enclosed: Yes
Contiguous: Yes
Permitted: Yes
Wet space: Yes
Addition: No
Conversion: No

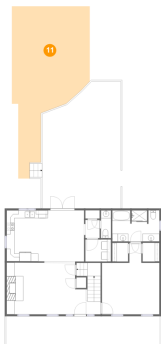
10 Floor 2 - Porch



Max Dimensions: 39'7" x 7'4"
Calculated Area: 290 sq. ft
Included: No

Heated: No
Finished: Yes
Enclosed: No
Contiguous: Yes
Permitted: Yes
Wet space: No
Addition: No
Conversion: No

11 Floor 2 - Patio



Max Dimensions: 20'0" x 44'3"
Calculated Area: 593 sq. ft
Included: No

Heated: No
Finished: Yes
Enclosed: No
Contiguous: Yes
Permitted: Yes
Wet space: No
Addition: No
Conversion: No

3848 Via Orchard Road, Critz, Patrick County, Virginia, United States, 24082

12 Floor 2 - W.I.C.



Max Dimensions: 4'1" x 4'10"
Calculated Area: 20 sq. ft
Included: Yes

Heated: Yes
Finished: Yes
Enclosed: Yes
Contiguous: Yes
Permitted: Yes
Wet space: No
Addition: No
Conversion: No

13 Floor 2 - Laundry



Max Dimensions: 6'7" x 5'8"
Calculated Area: 37 sq. ft
Included: Yes

Heated: Yes
Finished: Yes
Enclosed: Yes
Contiguous: Yes
Permitted: Yes
Wet space: No
Addition: No
Conversion: No

14 Floor 2 - W.I.C.



Max Dimensions: 4'4" x 4'10"
Calculated Area: 21 sq. ft
Included: Yes

Heated: Yes
Finished: Yes
Enclosed: Yes
Contiguous: Yes
Permitted: Yes
Wet space: No
Addition: No
Conversion: No

3848 Via Orchard Road, Critz, Patrick County, Virginia, United States, 24082

15 Floor 2 - Primary Bath



Max Dimensions: 12'1" x 8'0"
Calculated Area: 95 sq. ft
Included: Yes

Heated: Yes
Finished: Yes
Enclosed: Yes
Contiguous: Yes
Permitted: Yes
Wet space: Yes
Addition: No
Conversion: No

16 Floor 2 - Primary Bedroom



Max Dimensions: 14'9" x 18'4"
Calculated Area: 211 sq. ft
Included: Yes

Heated: Yes
Finished: Yes
Enclosed: Yes
Contiguous: Yes
Permitted: Yes
Wet space: No
Addition: No
Conversion: No

17 Floor 2 - Deck

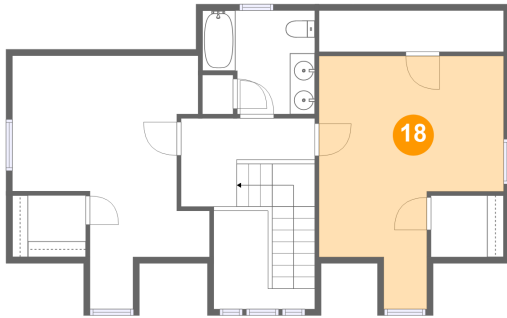


Max Dimensions: 23'5" x 32'8"
Calculated Area: 606 sq. ft
Included: No

Heated: No
Finished: Yes
Enclosed: No
Contiguous: Yes
Permitted: Yes
Wet space: No
Addition: No
Conversion: No

3848 Via Orchard Road, Critz, Patrick County, Virginia, United States, 24082

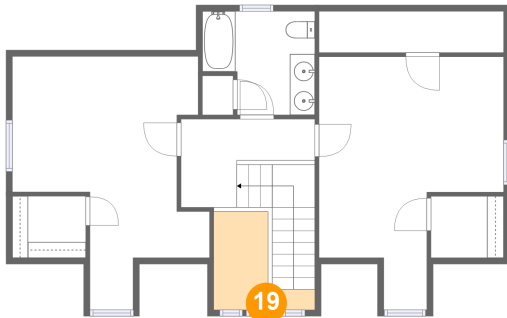
18 Floor 3 - Bedroom



Max Dimensions: 14'9" x 20'3"
Calculated Area: 219 sq. ft
Included: Yes

Heated: Yes
Finished: Yes
Enclosed: Yes
Contiguous: Yes
Permitted: Yes
Wet space: No
Addition: No
Conversion: No

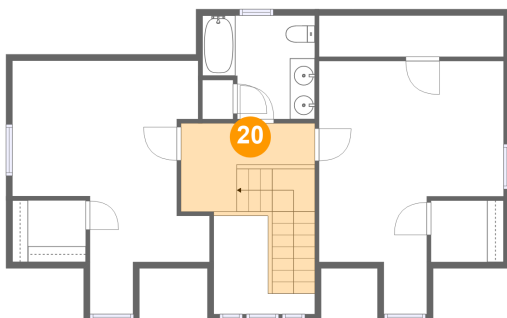
19 Floor 3 - Open To Below



Max Dimensions: 8'1" x 7'10"
Calculated Area: 40 sq. ft
Included: No

Heated: No
Finished: No
Enclosed: No
Contiguous: Yes
Permitted: No
Wet space: No
Addition: No
Conversion: No

20 Floor 3 - Hall

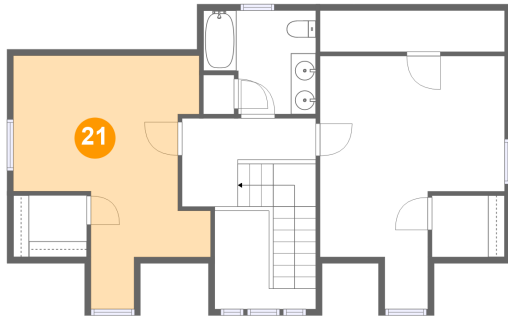


Max Dimensions: 10'8" x 7'1"
Calculated Area: 101 sq. ft
Included: Yes

Heated: Yes
Finished: Yes
Enclosed: Yes
Contiguous: Yes
Permitted: Yes
Wet space: No
Addition: No
Conversion: No

3848 Via Orchard Road, Critz, Patrick County, Virginia, United States, 24082

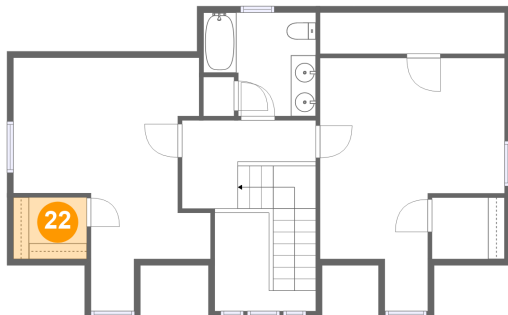
21 Floor 3 - Bedroom



Max Dimensions: 14'10" x 20'3"
Calculated Area: 211 sq. ft
Included: Yes

Heated: Yes
Finished: Yes
Enclosed: Yes
Contiguous: Yes
Permitted: Yes
Wet space: No
Addition: No
Conversion: No

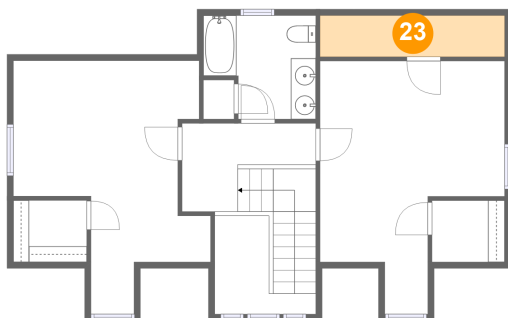
22 Floor 3 - W.I.C.



Max Dimensions: 5'10" x 4'11"
Calculated Area: 29 sq. ft
Included: Yes

Heated: Yes
Finished: Yes
Enclosed: Yes
Contiguous: Yes
Permitted: Yes
Wet space: No
Addition: No
Conversion: No

23 Floor 3 - W.I.C.



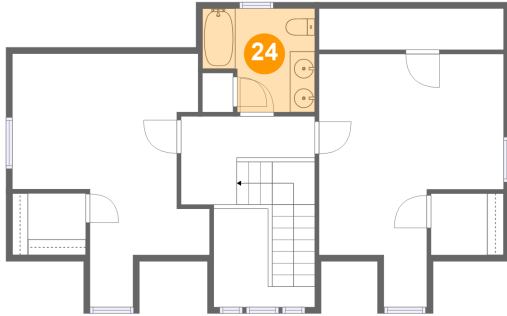
Max Dimensions: 14'9" x 3'4"
Calculated Area: 49 sq. ft
Included: Yes

Heated: Yes
Finished: Yes
Enclosed: Yes
Contiguous: Yes
Permitted: Yes
Wet space: No
Addition: No
Conversion: No

Home report

3848 Via Orchard Road, Critz, Patrick County, Virginia, United States, 24082

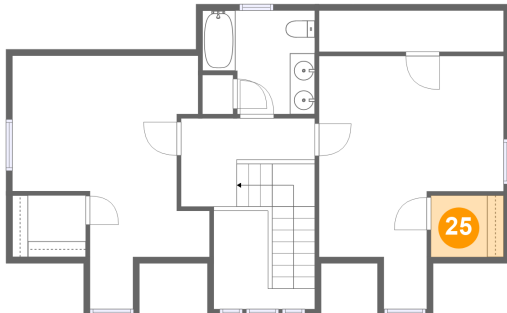
24 Floor 3 - Bath



Max Dimensions: 9'0" x 8'3"
Calculated Area: 65 sq. ft
Included: Yes

Heated: Yes
Finished: Yes
Enclosed: Yes
Contiguous: Yes
Permitted: Yes
Wet space: Yes
Addition: No
Conversion: No

25 Floor 3 - W.I.C.



Max Dimensions: 5'10" x 4'11"
Calculated Area: 28 sq. ft
Included: No

Heated: Yes
Finished: Yes
Enclosed: Yes
Contiguous: Yes
Permitted: Yes
Wet space: No
Addition: No
Conversion: No