


1530 Via Arroyo, Paso Robles, San Luis Obispo County, California, United States, 93446



FLOOR 1

Property summary

 **1** Garages

 **3** Bedrooms

 **2** Bathrooms

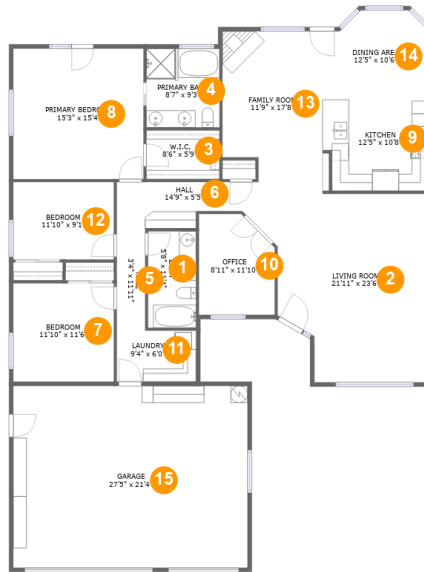
 **0** Half baths

 **1** Floors

 **1,970** Gross living area sqft

 **2,595** Total sqft

1530 Via Arroyo, Paso Robles, San Luis Obispo County, California, United States, 93446



Room dimensions

Floor 1

Total sqft: 2595 Living area: 1970

#		Dimensions	sqft	Counted as living area
1	Bath	5'8" x 11'4"	64 sq. ft	Yes
2	Living Room	21'11" x 23'6"	394 sq. ft	Yes
3	W.I.C.	8'6" x 5'9"	49 sq. ft	Yes
4	Primary Bath	8'7" x 9'3"	79 sq. ft	Yes
5	Hall	3'4" x 11'11"	40 sq. ft	Yes
6	Hall	14'9" x 5'5"	69 sq. ft	Yes
7	Bedroom	11'10" x 11'6"	136 sq. ft	Yes
8	Primary Bedroom	15'3" x 15'4"	234 sq. ft	Yes
9	Kitchen	12'5" x 10'8"	128 sq. ft	Yes
10	Office	8'11" x 11'10"	98 sq. ft	Yes
11	Laundry	9'4" x 6'0"	56 sq. ft	Yes

**1530 Via Arroyo, Paso Robles, San Luis Obispo
County, California, United States, 93446**

#		Dimensions	sqft	Counted as living area
12	Bedroom	11'10" x 9'1"	107 sq. ft	Yes
13	Family Room	11'9" x 17'8"	198 sq. ft	Yes
14	Dining Area	12'5" x 10'6"	120 sq. ft	Yes
15	Garage	27'5" x 21'4"	586 sq. ft	No

1530 Via Arroyo, Paso Robles, San Luis Obispo County, California, United States, 93446

1 Floor 1 - Bath



Dimensions: 5'8" x 11'4"
Area: 64 sq. ft
Counted as living area: Yes

Heated: Yes
Finished: Yes
Enclosed: Yes
Contiguous: Yes
Permitted: Yes
Wet space: Yes
Addition: No
Conversion: No

2 Floor 1 - Living Room



Dimensions: 21'11" x 23'6"
Area: 394 sq. ft
Counted as living area: Yes

Heated: Yes
Finished: Yes
Enclosed: Yes
Contiguous: Yes
Permitted: Yes
Wet space: No
Addition: No
Conversion: No

1530 Via Arroyo, Paso Robles, San Luis Obispo County, California, United States, 93446

3 Floor 1 - W.I.C.



Dimensions: 8'6" x 5'9"
Area: 49 sq. ft
Counted as living area: Yes

Heated: Yes
Finished: Yes
Enclosed: Yes
Contiguous: Yes
Permitted: Yes
Wet space: No
Addition: No
Conversion: No

4 Floor 1 - Primary Bath



Dimensions: 8'7" x 9'3"
Area: 79 sq. ft
Counted as living area: Yes

Heated: Yes
Finished: Yes
Enclosed: Yes
Contiguous: Yes
Permitted: Yes
Wet space: Yes
Addition: No
Conversion: No

5 Floor 1 - Hall



Dimensions: 3'4" x 11'11"
Area: 40 sq. ft
Counted as living area: Yes

Heated: Yes
Finished: Yes
Enclosed: Yes
Contiguous: Yes
Permitted: Yes
Wet space: No
Addition: No
Conversion: No

1530 Via Arroyo, Paso Robles, San Luis Obispo County, California, United States, 93446

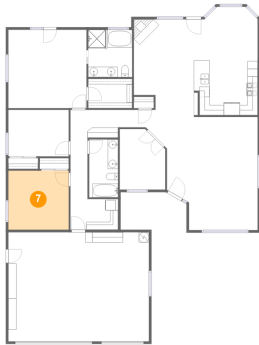
6 Floor 1 - Hall



Dimensions: 14'9" x 5'5"
Area: 69 sq. ft
Counted as living area: Yes

Heated: Yes
Finished: Yes
Enclosed: Yes
Contiguous: Yes
Permitted: Yes
Wet space: No
Addition: No
Conversion: No

7 Floor 1 - Bedroom



Dimensions: 11'10" x 11'6"
Area: 136 sq. ft
Counted as living area: Yes

Heated: Yes
Finished: Yes
Enclosed: Yes
Contiguous: Yes
Permitted: Yes
Wet space: No
Addition: No
Conversion: No

8 Floor 1 - Primary Bedroom



Dimensions: 15'3" x 15'4"
Area: 234 sq. ft
Counted as living area: Yes

Heated: Yes
Finished: Yes
Enclosed: Yes
Contiguous: Yes
Permitted: Yes
Wet space: No
Addition: No
Conversion: No

1530 Via Arroyo, Paso Robles, San Luis Obispo County, California, United States, 93446

9 Floor 1 - Kitchen



Dimensions: 12'5" x 10'8"
Area: 128 sq. ft
Counted as living area: Yes

Heated: Yes
Finished: Yes
Enclosed: Yes
Contiguous: Yes
Permitted: Yes
Wet space: No
Addition: No
Conversion: No

10 Floor 1 - Office



Dimensions: 8'11" x 11'10"
Area: 98 sq. ft
Counted as living area: Yes

Heated: Yes
Finished: Yes
Enclosed: Yes
Contiguous: Yes
Permitted: Yes
Wet space: No
Addition: No
Conversion: No

11 Floor 1 - Laundry



Dimensions: 9'4" x 6'0"
Area: 56 sq. ft
Counted as living area: Yes

Heated: Yes
Finished: Yes
Enclosed: Yes
Contiguous: Yes
Permitted: Yes
Wet space: No
Addition: No
Conversion: No

1530 Via Arroyo, Paso Robles, San Luis Obispo County, California, United States, 93446

12 Floor 1 - Bedroom



Dimensions: 11'10" x 9'1"
Area: 107 sq. ft
Counted as living area: Yes

Heated: Yes
Finished: Yes
Enclosed: Yes
Contiguous: Yes
Permitted: Yes
Wet space: No
Addition: No
Conversion: No

13 Floor 1 - Family Room



Dimensions: 11'9" x 17'8"
Area: 198 sq. ft
Counted as living area: Yes

Heated: Yes
Finished: Yes
Enclosed: Yes
Contiguous: Yes
Permitted: Yes
Wet space: No
Addition: No
Conversion: No

14 Floor 1 - Dining Area



Dimensions: 12'5" x 10'6"
Area: 120 sq. ft
Counted as living area: Yes

Heated: Yes
Finished: Yes
Enclosed: Yes
Contiguous: Yes
Permitted: Yes
Wet space: No
Addition: No
Conversion: No

**1530 Via Arroyo, Paso Robles, San Luis Obispo
County, California, United States, 93446**

15 Floor 1 - Garage



Dimensions: 27'5" x 21'4"
Area: 586 sq. ft
Counted as living area: No

Heated: No
Finished: No
Enclosed: Yes
Contiguous: Yes
Permitted: Yes
Wet space: No
Addition: No
Conversion: No