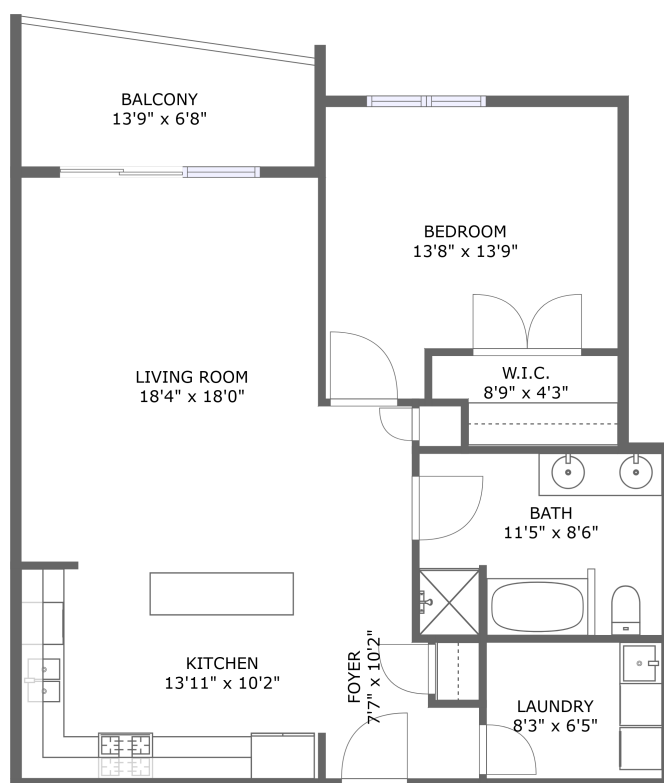


## Home report

1200 Foxdale Drive, Addison, DuPage County, Illinois, United States, 60101, 307



FLOOR 1

## Property summary


 **0** Garages


 **1** Bedrooms

 **1** Bathrooms

 **0** Half baths

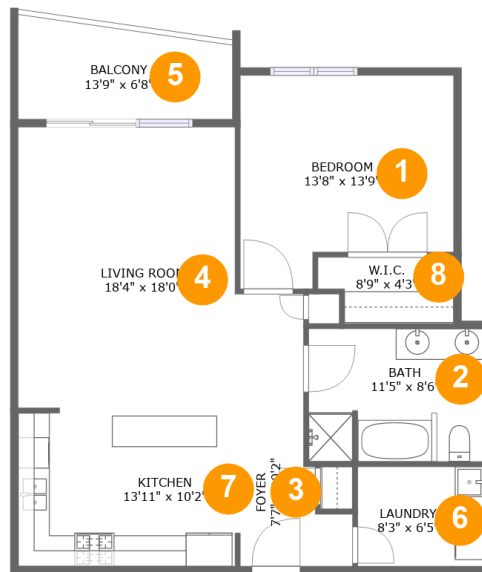
 **1** Floors

 **867** Gross living area sqft

 **946** Total sqft

## Home report

1200 Foxdale Drive, Addison, DuPage County, Illinois, United States, 60101, 307



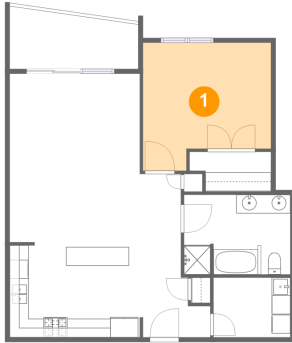
## Room dimensions

Floor 1

Total sqft: 946 Living area: 867

#		Dimensions	sqft	Counted as living area
1	Bedroom	13'8" x 13'9"	167 sq. ft	Yes
2	Bath	11'5" x 8'6"	96 sq. ft	Yes
3	Foyer	7'7" x 10'2"	57 sq. ft	Yes
4	Living Room	18'4" x 18'0"	284 sq. ft	Yes
5	Balcony	13'9" x 6'8"	79 sq. ft	No
6	Laundry	8'3" x 6'5"	53 sq. ft	Yes
7	Kitchen	13'11" x 10'2"	141 sq. ft	Yes
8	W.I.C.	8'9" x 4'3"	33 sq. ft	Yes

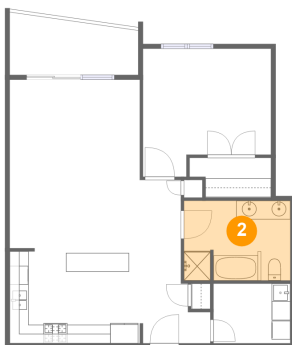
## 1 Floor 1 - Bedroom



Dimensions: 13'8" x 13'9"  
Area: 167 sq. ft  
Counted as living area: Yes

Heated: Yes  
Finished: Yes  
Enclosed: Yes  
Contiguous: Yes  
Permitted: Yes  
Wet space: No  
Addition: No  
Conversion: No

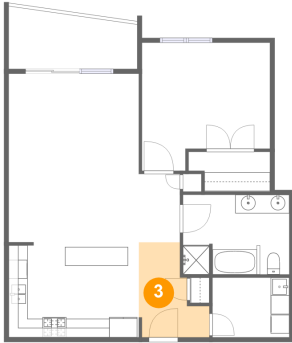
## 2 Floor 1 - Bath



Dimensions: 11'5" x 8'6"  
Area: 96 sq. ft  
Counted as living area: Yes

Heated: Yes  
Finished: Yes  
Enclosed: Yes  
Contiguous: Yes  
Permitted: Yes  
Wet space: Yes  
Addition: No  
Conversion: No

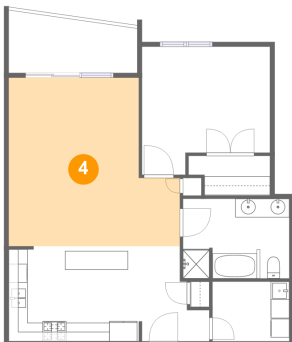
**3** Floor 1 - Foyer



Dimensions: 7'7" x 10'2"  
Area: 57 sq. ft  
Counted as living area: Yes

Heated: Yes  
Finished: Yes  
Enclosed: Yes  
Contiguous: Yes  
Permitted: Yes  
Wet space: No  
Addition: No  
Conversion: No

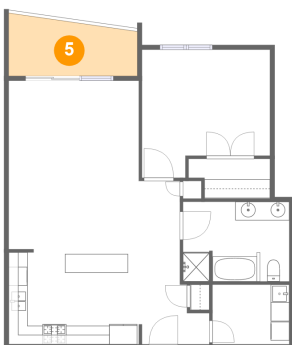
**4** Floor 1 - Living Room



Dimensions: 18'4" x 18'0"  
Area: 284 sq. ft  
Counted as living area: Yes

Heated: Yes  
Finished: Yes  
Enclosed: Yes  
Contiguous: Yes  
Permitted: Yes  
Wet space: No  
Addition: No  
Conversion: No

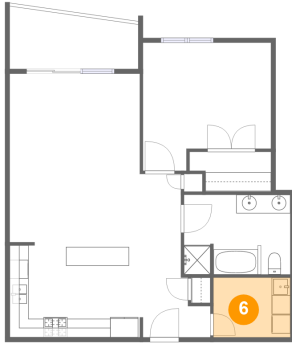
**5** Floor 1 - Balcony



Dimensions: 13'9" x 6'8"  
Area: 79 sq. ft  
Counted as living area: No

Heated: No  
Finished: Yes  
Enclosed: No  
Contiguous: Yes  
Permitted: Yes  
Wet space: No  
Addition: No  
Conversion: No

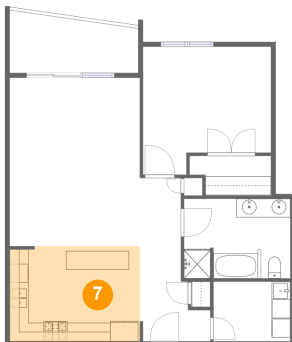
**6** Floor 1 - Laundry



Dimensions: 8'3" x 6'5"  
Area: 53 sq. ft  
Counted as living area: Yes

Heated: Yes  
Finished: Yes  
Enclosed: Yes  
Contiguous: Yes  
Permitted: Yes  
Wet space: No  
Addition: No  
Conversion: No

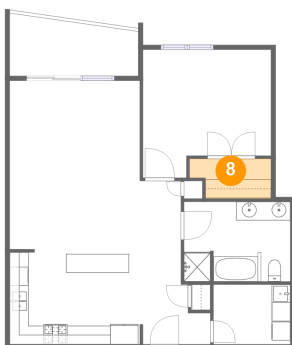
**7** Floor 1 - Kitchen



Dimensions: 13'11" x 10'2"  
Area: 141 sq. ft  
Counted as living area: Yes

Heated: Yes  
Finished: Yes  
Enclosed: Yes  
Contiguous: Yes  
Permitted: Yes  
Wet space: No  
Addition: No  
Conversion: No

**8** Floor 1 - W.I.C.



Dimensions: 8'9" x 4'3"  
Area: 33 sq. ft  
Counted as living area: Yes

Heated: Yes  
Finished: Yes  
Enclosed: Yes  
Contiguous: Yes  
Permitted: Yes  
Wet space: No  
Addition: No  
Conversion: No