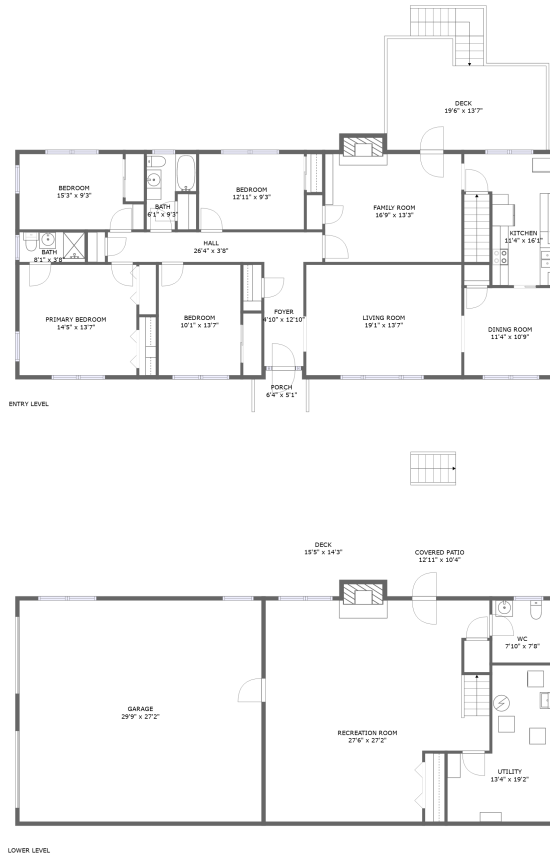



3743 Tomley Drive, Berwick Heights, Cave Spring, Roanoke, Roanoke County, Virginia, United States,



Property summary


 **1** Garages

 **4** Bedrooms

 **2** Bathrooms

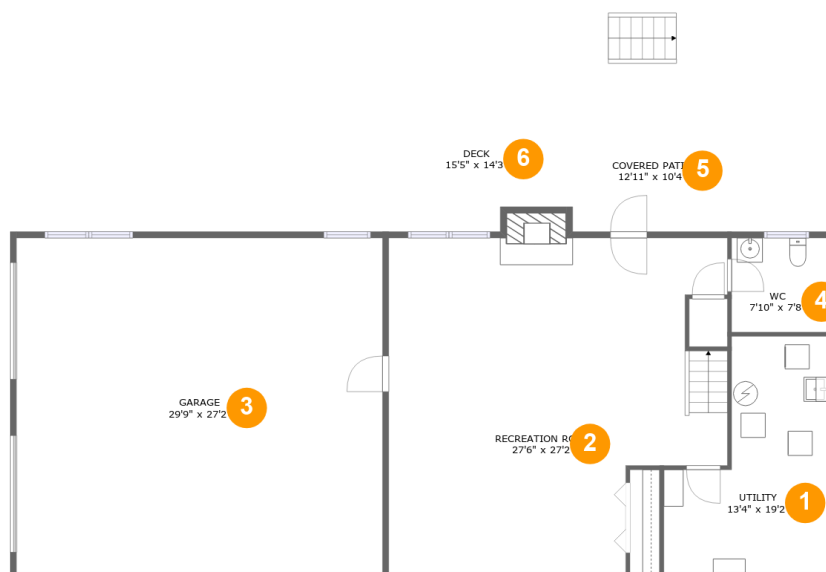
 **1** Half baths

 **2** Floors

 **2,703** Gross living area sqft

 **4,357** Total sqft

3743 Tomley Drive, Berwick Heights, Cave Spring, Roanoke, Roanoke County, Virginia, United States,



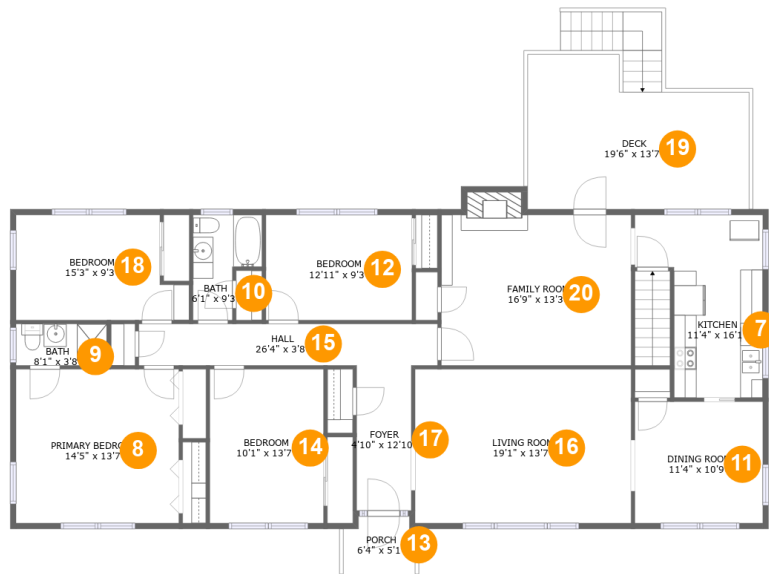
Room dimensions

Floor 1

Total sqft: 2204 Living area: 821

| # | | Dimensions | sqft | Counted as living area |
|---|-----------------|----------------|------------|------------------------|
| 1 | Utility | 13'4" x 19'2" | 197 sq. ft | No |
| 2 | Recreation Room | 27'6" x 27'2" | 670 sq. ft | Yes |
| 3 | Garage | 29'9" x 27'2" | 808 sq. ft | No |
| 4 | Bath | 7'10" x 7'8" | 60 sq. ft | Yes |
| 5 | Outdoor | 12'11" x 10'4" | 133 sq. ft | No |
| 6 | Outdoor | 15'5" x 14'3" | 173 sq. ft | No |

3743 Tomley Drive, Berwick Heights, Cave Spring, Roanoke, Roanoke County, Virginia, United States,



Room dimensions

Floor 2

Total sqft: 2153 Living area: 1882

| # | | Dimensions | sqft | Counted as living area |
|----|-------------|----------------|------------|------------------------|
| 7 | Kitchen | 11'4" x 16'1" | 143 sq. ft | Yes |
| 8 | Bedroom | 14'5" x 13'7" | 195 sq. ft | Yes |
| 9 | Bath | 8'1" x 3'8" | 30 sq. ft | Yes |
| 10 | Bath | 6'1" x 9'3" | 44 sq. ft | Yes |
| 11 | Dining Room | 11'4" x 10'9" | 121 sq. ft | Yes |
| 12 | Bedroom | 12'11" x 9'3" | 120 sq. ft | Yes |
| 13 | Outdoor | 6'4" x 5'1" | 30 sq. ft | No |
| 14 | Bedroom | 10'1" x 13'7" | 136 sq. ft | Yes |
| 15 | Hall | 26'4" x 3'8" | 97 sq. ft | Yes |
| 16 | Living Room | 19'1" x 13'7" | 259 sq. ft | Yes |
| 17 | Entry | 4'10" x 12'10" | 62 sq. ft | Yes |

Scan captured on Fri, 13 Dec 2024 21:34:03 GMT

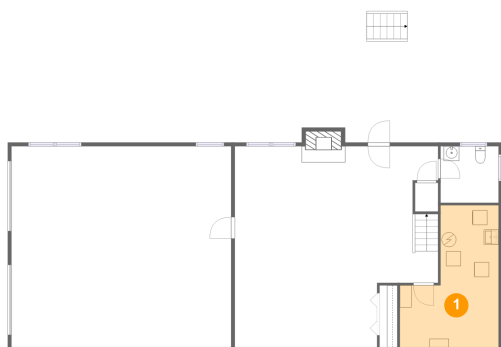
Information is calculated by Cubicasa technology deemed highly reliable but not guaranteed.

**3743 Tomley Drive, Berwick Heights, Cave Spring,
Roanoke, Roanoke County, Virginia, United States,**

| # | | Dimensions | sqft | Counted as living area |
|----|-------------|---------------|------------|------------------------|
| 18 | Bedroom | 15'3" x 9'3" | 126 sq. ft | Yes |
| 19 | Outdoor | 19'6" x 13'7" | 229 sq. ft | No |
| 20 | Living Room | 16'9" x 13'3" | 232 sq. ft | Yes |

**3743 Tomley Drive, Berwick Heights, Cave Spring,
Roanoke, Roanoke County, Virginia, United States,**

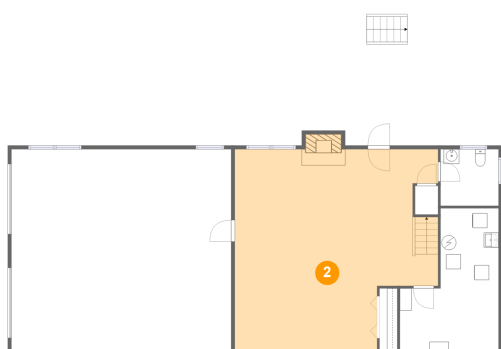
1 Floor 1 - Utility



Dimensions: 13'4" x 19'2"
Area: 197 sq. ft
Counted as living area: No

Heated: Yes
Finished: No
Enclosed: Yes
Contiguous: Yes
Permitted: Yes
Wet space: No
Addition: No
Conversion: No

2 Floor 1 - Recreation Room

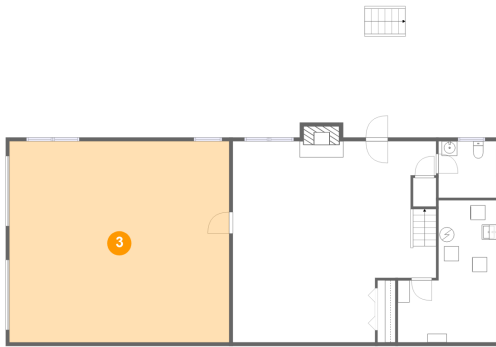


Dimensions: 27'6" x 27'2"
Area: 670 sq. ft
Counted as living area: Yes

Heated: Yes
Finished: Yes
Enclosed: Yes
Contiguous: Yes
Permitted: Yes
Wet space: No
Addition: No
Conversion: No

**3743 Tomley Drive, Berwick Heights, Cave Spring,
Roanoke, Roanoke County, Virginia, United States,**

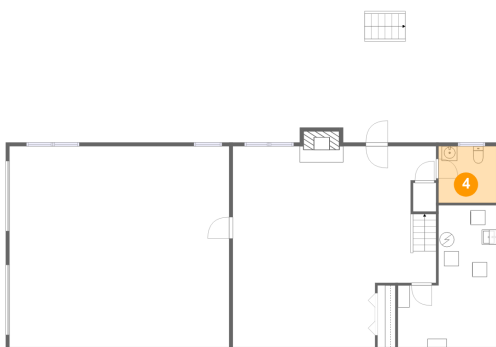
3 Floor 1 - Garage



Dimensions: 29'9" x 27'2"
Area: 808 sq. ft
Counted as living area: No

Heated: No
Finished: No
Enclosed: Yes
Contiguous: Yes
Permitted: Yes
Wet space: No
Addition: No
Conversion: No

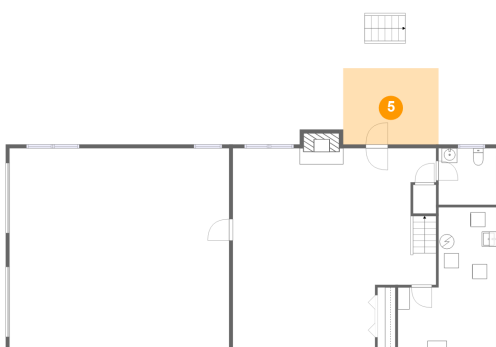
4 Floor 1 - Bath



Dimensions: 7'10" x 7'8"
Area: 60 sq. ft
Counted as living area: Yes

Heated: Yes
Finished: Yes
Enclosed: Yes
Contiguous: Yes
Permitted: Yes
Wet space: Yes
Addition: No
Conversion: No

5 Floor 1 - Outdoor

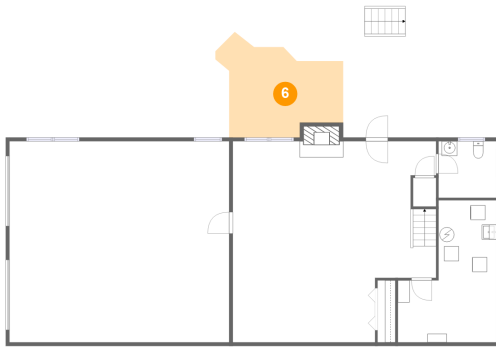


Dimensions: 12'11" x 10'4"
Area: 133 sq. ft
Counted as living area: No

Heated: No
Finished: Yes
Enclosed: No
Contiguous: Yes
Permitted: Yes
Wet space: No
Addition: No
Conversion: No

**3743 Tomley Drive, Berwick Heights, Cave Spring,
Roanoke, Roanoke County, Virginia, United States,**

6 Floor 1 - Outdoor



Dimensions: 15'5" x 14'3"
Area: 173 sq. ft
Counted as living area: No

Heated: No
Finished: Yes
Enclosed: No
Contiguous: Yes
Permitted: Yes
Wet space: No
Addition: No
Conversion: No

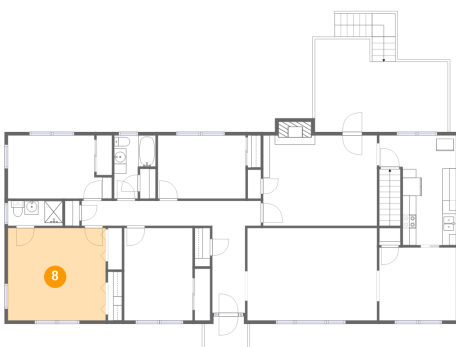
7 Floor 2 - Kitchen



Dimensions: 11'4" x 16'1"
Area: 143 sq. ft
Counted as living area: Yes

Heated: Yes
Finished: Yes
Enclosed: Yes
Contiguous: Yes
Permitted: Yes
Wet space: No
Addition: No
Conversion: No

8 Floor 2 - Bedroom



Dimensions: 14'5" x 13'7"
Area: 195 sq. ft
Counted as living area: Yes

Heated: Yes
Finished: Yes
Enclosed: Yes
Contiguous: Yes
Permitted: Yes
Wet space: No
Addition: No
Conversion: No

**3743 Tomley Drive, Berwick Heights, Cave Spring,
Roanoke, Roanoke County, Virginia, United States,**

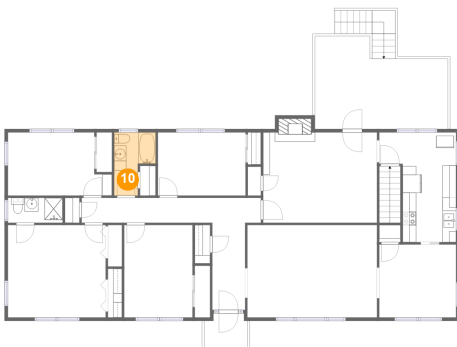
9 Floor 2 - Bath



Dimensions: 8'1" x 3'8"
Area: 30 sq. ft
Counted as living area: Yes

Heated: Yes
Finished: Yes
Enclosed: Yes
Contiguous: Yes
Permitted: Yes
Wet space: Yes
Addition: No
Conversion: No

10 Floor 2 - Bath



Dimensions: 6'1" x 9'3"
Area: 44 sq. ft
Counted as living area: Yes

Heated: Yes
Finished: Yes
Enclosed: Yes
Contiguous: Yes
Permitted: Yes
Wet space: Yes
Addition: No
Conversion: No

11 Floor 2 - Dining Room

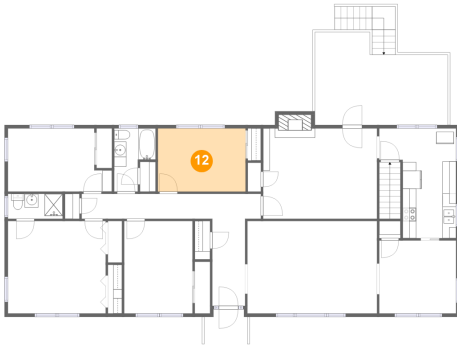


Dimensions: 11'4" x 10'9"
Area: 121 sq. ft
Counted as living area: Yes

Heated: Yes
Finished: Yes
Enclosed: Yes
Contiguous: Yes
Permitted: Yes
Wet space: No
Addition: No
Conversion: No

**3743 Tomley Drive, Berwick Heights, Cave Spring,
Roanoke, Roanoke County, Virginia, United States,**

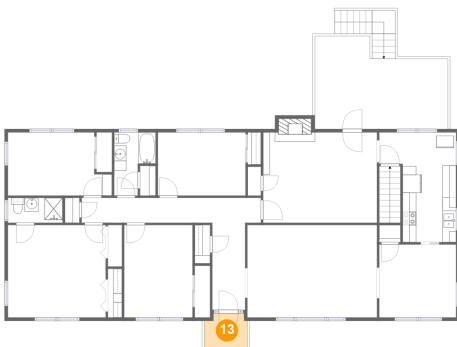
12 Floor 2 - Bedroom



Dimensions: 12'11" x 9'3"
Area: 120 sq. ft
Counted as living area: Yes

Heated: Yes
Finished: Yes
Enclosed: Yes
Contiguous: Yes
Permitted: Yes
Wet space: No
Addition: No
Conversion: No

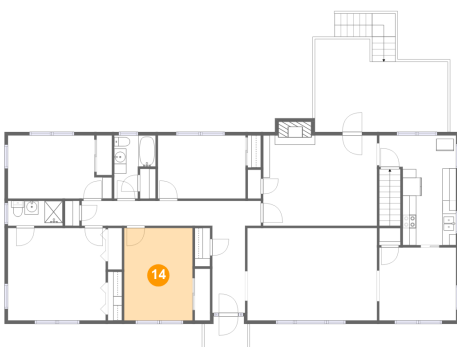
13 Floor 2 - Outdoor



Dimensions: 6'4" x 5'1"
Area: 30 sq. ft
Counted as living area: No

Heated: No
Finished: Yes
Enclosed: No
Contiguous: Yes
Permitted: Yes
Wet space: No
Addition: No
Conversion: No

14 Floor 2 - Bedroom

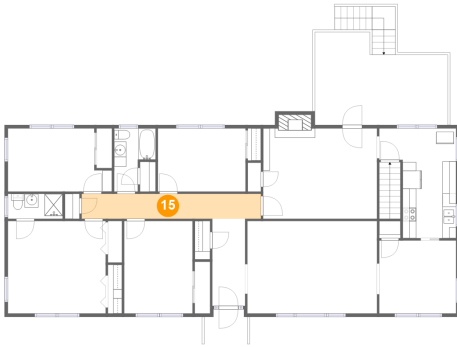


Dimensions: 10'1" x 13'7"
Area: 136 sq. ft
Counted as living area: Yes

Heated: Yes
Finished: Yes
Enclosed: Yes
Contiguous: Yes
Permitted: Yes
Wet space: No
Addition: No
Conversion: No

**3743 Tomley Drive, Berwick Heights, Cave Spring,
Roanoke, Roanoke County, Virginia, United States,**

15 Floor 2 - Hall



Dimensions: 26'4" x 3'8"
Area: 97 sq. ft
Counted as living area: Yes

Heated: Yes
Finished: Yes
Enclosed: Yes
Contiguous: Yes
Permitted: Yes
Wet space: No
Addition: No
Conversion: No

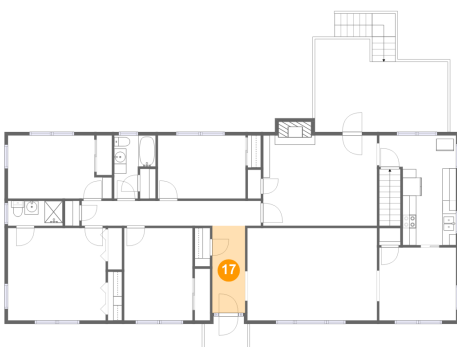
16 Floor 2 - Living Room



Dimensions: 19'1" x 13'7"
Area: 259 sq. ft
Counted as living area: Yes

Heated: Yes
Finished: Yes
Enclosed: Yes
Contiguous: Yes
Permitted: Yes
Wet space: No
Addition: No
Conversion: No

17 Floor 2 - Entry

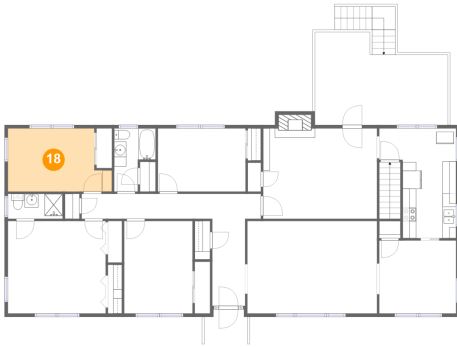


Dimensions: 4'10" x 12'10"
Area: 62 sq. ft
Counted as living area: Yes

Heated: Yes
Finished: Yes
Enclosed: Yes
Contiguous: Yes
Permitted: Yes
Wet space: No
Addition: No
Conversion: No

**3743 Tomley Drive, Berwick Heights, Cave Spring,
Roanoke, Roanoke County, Virginia, United States,**

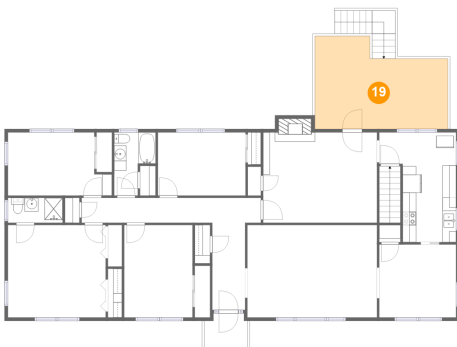
18 Floor 2 - Bedroom



Dimensions: 15'3" x 9'3"
Area: 126 sq. ft
Counted as living area: Yes

Heated: Yes
Finished: Yes
Enclosed: Yes
Contiguous: Yes
Permitted: Yes
Wet space: No
Addition: No
Conversion: No

19 Floor 2 - Outdoor



Dimensions: 19'6" x 13'7"
Area: 229 sq. ft
Counted as living area: No

Heated: No
Finished: Yes
Enclosed: No
Contiguous: Yes
Permitted: Yes
Wet space: No
Addition: No
Conversion: No

20 Floor 2 - Living Room



Dimensions: 16'9" x 13'3"
Area: 232 sq. ft
Counted as living area: Yes

Heated: Yes
Finished: Yes
Enclosed: Yes
Contiguous: Yes
Permitted: Yes
Wet space: No
Addition: No
Conversion: No