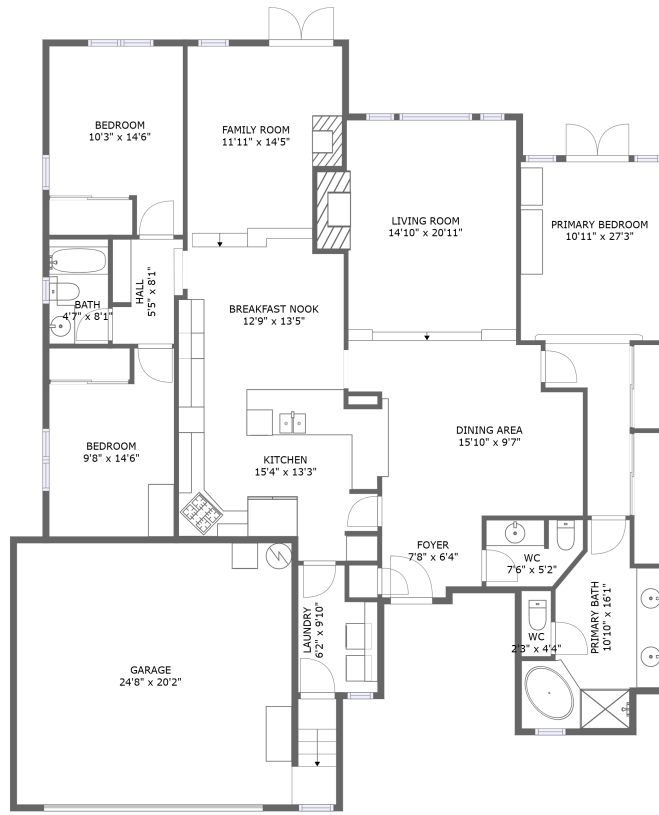


79 Whitecap Street, Pismo Beach, San Luis Obispo County, California, United States, 93449




FLOOR 1

Property Summary


 **1** garages

 **3** bedrooms

 **2** bathrooms

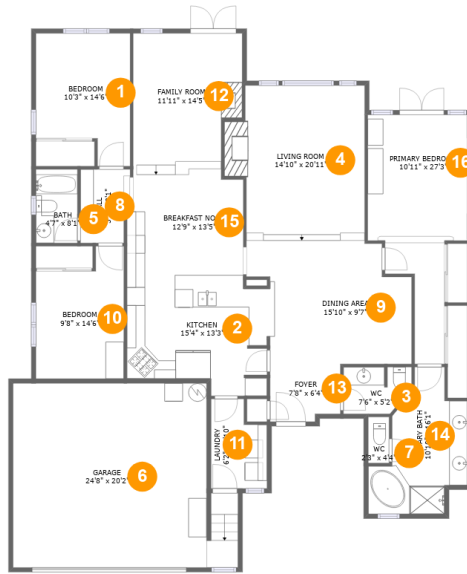
 **1** half baths

 **1** floors

 **1,993** Gross Living Area sqft

 **2,477** total sqft

79 Whitecap Street, Pismo Beach, San Luis Obispo County, California, United States, 93449



Room Dimensions

Floor 1

Total sqft: 2477

Living area: 1993

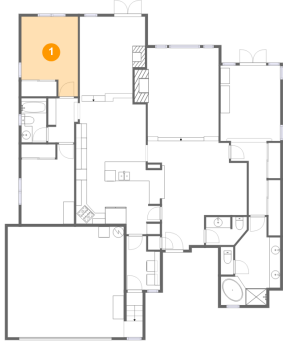
#	Room name	Dimensions	Area (sqft)	Counted as Living Area
1	Bedroom	10'3" x 14'6"	130 sq. ft	Yes
2	Kitchen	15'4" x 13'3"	173 sq. ft	Yes
3	Wc	7'6" x 5'2"	34 sq. ft	Yes
4	Living Room	14'10" x 20'11"	293 sq. ft	Yes
5	Bath	4'7" x 8'1"	37 sq. ft	Yes
6	Garage	24'8" x 20'2"	453 sq. ft	No
7	Wc	2'3" x 4'4"	12 sq. ft	Yes
8	Hall	5'5" x 8'1"	41 sq. ft	Yes
9	Dining Area	15'10" x 9'7"	150 sq. ft	Yes
10	Bedroom	9'8" x 14'6"	122 sq. ft	Yes
11	Laundry	6'2" x 9'10"	53 sq. ft	Yes

79 Whitecap Street, Pismo Beach, San Luis Obispo County, California, United States, 93449

#	Room name	Dimensions	Area (sqft)	Counted as Living Area
12	Family Room	11'11" x 14'5"	158 sq. ft	Yes
13	Foyer	7'8" x 6'4"	46 sq. ft	Yes
14	Primary Bath	10'10" x 16'1"	119 sq. ft	Yes
15	Breakfast Nook	12'9" x 13'5"	156 sq. ft	Yes
16	Primary Bedroom	10'11" x 27'3"	209 sq. ft	Yes

79 Whitecap Street, Pismo Beach, San Luis Obispo County, California, United States, 93449

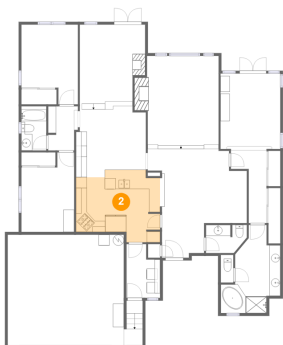
1 Floor 1 - Bedroom



Dimensions: 10'3" x 14'6"
Area: 130 sq. ft
Counted as Living Area:
Yes

Heated: Yes
Finished: Yes
Enclosed: Yes
Contiguous:
Yes
Permitted: Yes
Wet Space: No
Addition: No
Conversion: No

2 Floor 1 - Kitchen

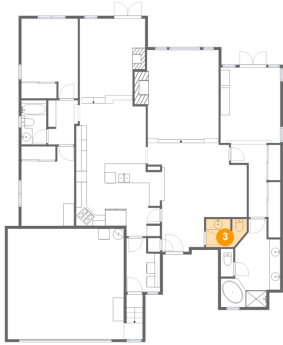


Dimensions: 15'4" x 13'3"
Area: 173 sq. ft
Counted as Living Area:
Yes

Heated: Yes
Finished: Yes
Enclosed: Yes
Contiguous:
Yes
Permitted: Yes
Wet Space: No
Addition: No
Conversion: No

79 Whitecap Street, Pismo Beach, San Luis Obispo County, California, United States, 93449

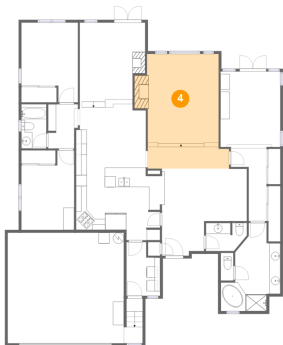
3 Floor 1 - Wc



Dimensions: 7'6" x 5'2"
Area: 34 sq. ft
Counted as Living Area:
Yes

Heated: Yes
Finished: Yes
Enclosed: Yes
Contiguous:
Yes
Permitted: Yes
Wet Space: Yes
Addition: No
Conversion: No

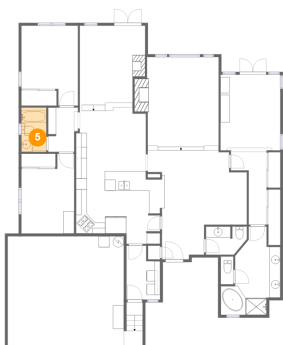
4 Floor 1 - Living Room



Dimensions: 14'10" x 20'11"
Area: 293 sq. ft
Counted as Living Area:
Yes

Heated: Yes
Finished: Yes
Enclosed: Yes
Contiguous:
Yes
Permitted: Yes
Wet Space: No
Addition: No
Conversion: No

5 Floor 1 - Bath

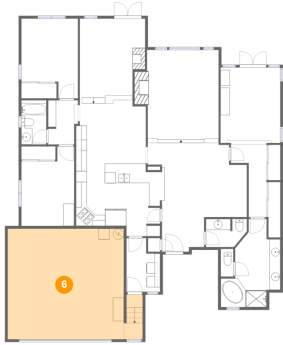


Dimensions: 4'7" x 8'1"
Area: 37 sq. ft
Counted as Living Area:
Yes

Heated: Yes
Finished: Yes
Enclosed: Yes
Contiguous:
Yes
Permitted: Yes
Wet Space: Yes
Addition: No
Conversion: No

79 Whitecap Street, Pismo Beach, San Luis Obispo County, California, United States, 93449

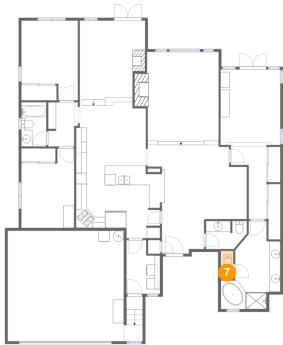
6 Floor 1 - Garage



Dimensions: 24'8" x 20'2"
Area: 453 sq. ft
Counted as Living Area: No

Heated: No
Finished: No
Enclosed: Yes
Contiguous: Yes
Permitted: Yes
Wet Space: No
Addition: No
Conversion: No

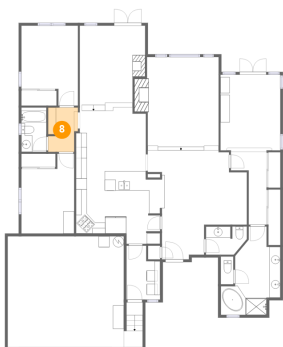
7 Floor 1 - Wc



Dimensions: 2'3" x 4'4"
Area: 12 sq. ft
Counted as Living Area:
Yes

Heated: Yes
Finished: Yes
Enclosed: Yes
Contiguous:
Yes
Permitted: Yes
Wet Space: Yes
Addition: No
Conversion: No

8 Floor 1 - Hall

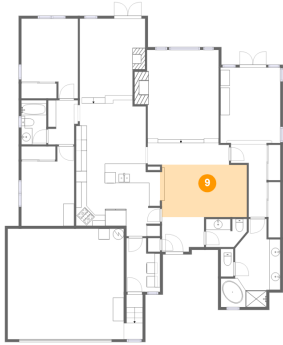


Dimensions: 5'5" x 8'1"
Area: 41 sq. ft
Counted as Living Area:
Yes

Heated: Yes
Finished: Yes
Enclosed: Yes
Contiguous:
Yes
Permitted: Yes
Wet Space: No
Addition: No
Conversion: No

79 Whitecap Street, Pismo Beach, San Luis Obispo County, California, United States, 93449

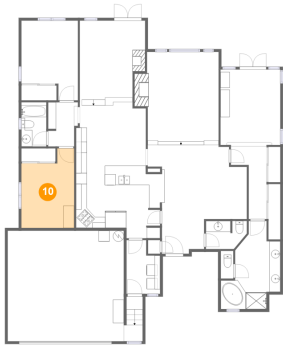
9 Floor 1 - Dining Area



Dimensions: 15'10" x 9'7"
Area: 150 sq. ft
Counted as Living Area:
Yes

Heated: Yes
Finished: Yes
Enclosed: Yes
Contiguous:
Yes
Permitted: Yes
Wet Space: No
Addition: No
Conversion: No

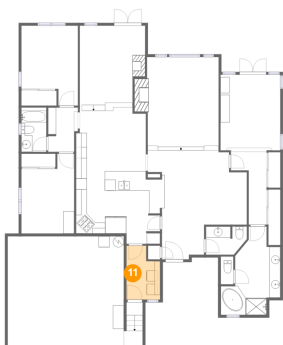
10 Floor 1 - Bedroom



Dimensions: 9'8" x 14'6"
Area: 122 sq. ft
Counted as Living Area:
Yes

Heated: Yes
Finished: Yes
Enclosed: Yes
Contiguous:
Yes
Permitted: Yes
Wet Space: No
Addition: No
Conversion: No

11 Floor 1 - Laundry

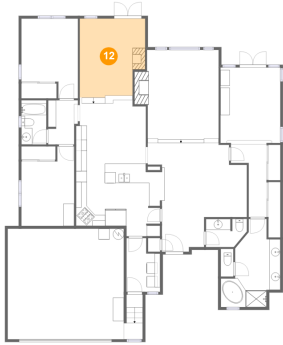


Dimensions: 6'2" x 9'10"
Area: 53 sq. ft
Counted as Living Area:
Yes

Heated: Yes
Finished: Yes
Enclosed: Yes
Contiguous:
Yes
Permitted: Yes
Wet Space: No
Addition: No
Conversion: No

79 Whitecap Street, Pismo Beach, San Luis Obispo County, California, United States, 93449

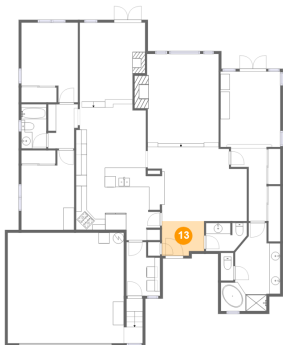
12 Floor 1 - Family Room



Dimensions: 11'11" x 14'5"
Area: 158 sq. ft
Counted as Living Area:
Yes

Heated: Yes
Finished: Yes
Enclosed: Yes
Contiguous:
Yes
Permitted: Yes
Wet Space: No
Addition: No
Conversion: No

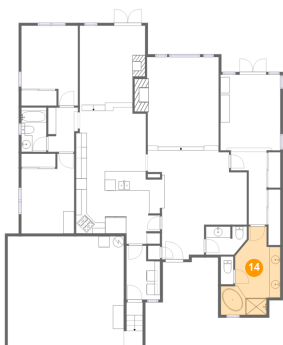
13 Floor 1 - Foyer



Dimensions: 7'8" x 6'4"
Area: 46 sq. ft
Counted as Living Area:
Yes

Heated: Yes
Finished: Yes
Enclosed: Yes
Contiguous:
Yes
Permitted: Yes
Wet Space: No
Addition: No
Conversion: No

14 Floor 1 - Primary Bath

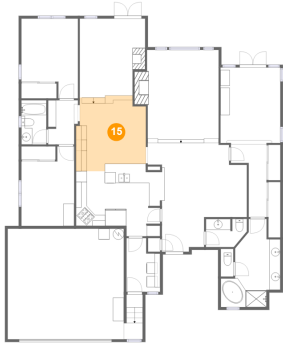


Dimensions: 10'10" x 16'1"
Area: 119 sq. ft
Counted as Living Area:
Yes

Heated: Yes
Finished: Yes
Enclosed: Yes
Contiguous:
Yes
Permitted: Yes
Wet Space: Yes
Addition: No
Conversion: No

79 Whitecap Street, Pismo Beach, San Luis Obispo County, California, United States, 93449

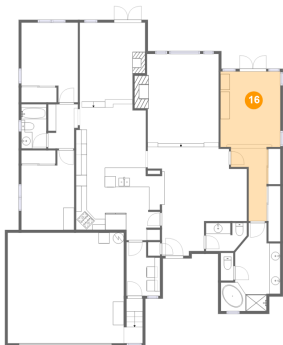
15 Floor 1 - Breakfast Nook



Dimensions: 12'9" x 13'5"
Area: 156 sq. ft
Counted as Living Area:
Yes

Heated: Yes
Finished: Yes
Enclosed: Yes
Contiguous:
Yes
Permitted: Yes
Wet Space: No
Addition: No
Conversion: No

16 Floor 1 - Primary Bedroom



Dimensions: 10'11" x 27'3"
Area: 209 sq. ft
Counted as Living Area:
Yes

Heated: Yes
Finished: Yes
Enclosed: Yes
Contiguous:
Yes
Permitted: Yes
Wet Space: No
Addition: No
Conversion: No