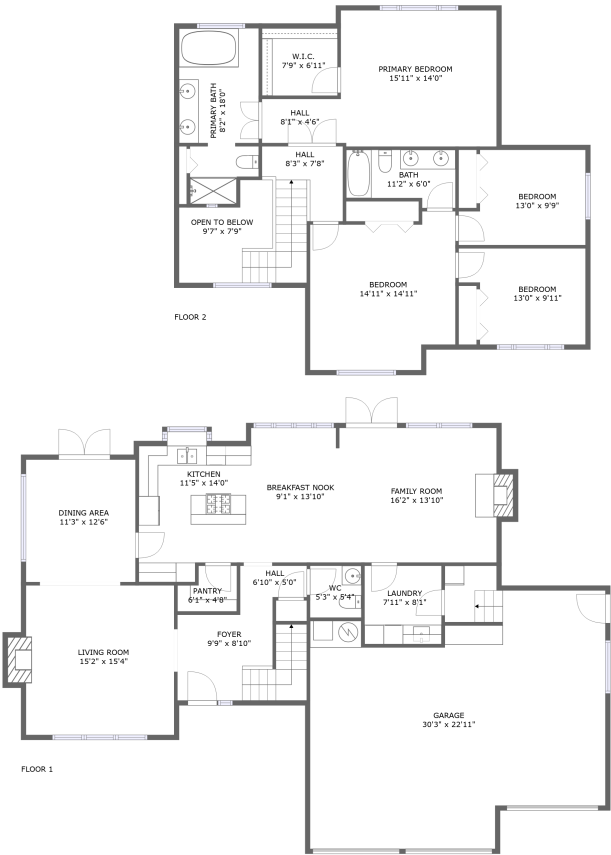



Home report


18625 Northeast 201st Drive, Reintree, Cottage Lake,
Woodinville, King County, Washington, United States, 98077



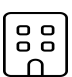
Property summary

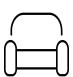
 **1** Garages


 **4** Bedrooms

 **2** Bathrooms

 **1** Half baths

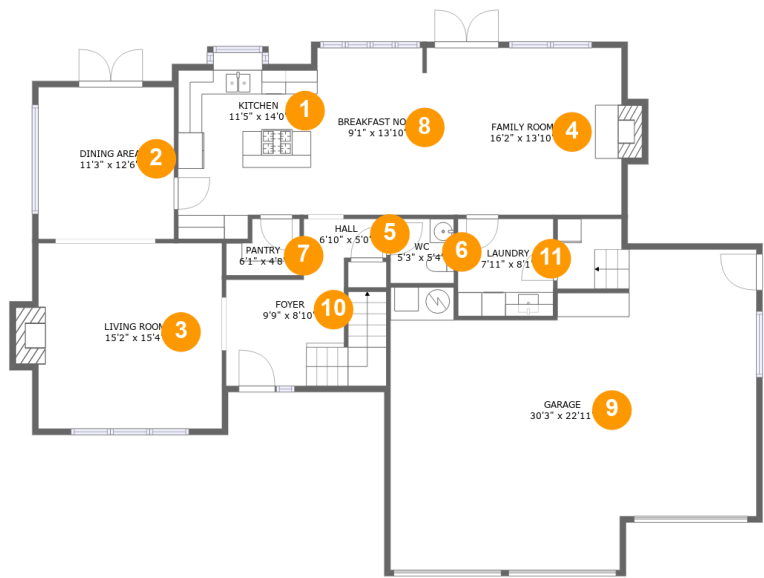
 **2** Floors

 **2,466** Gross living area sqft

 **3,309** Total sqft

Home report

18625 Northeast 201st Drive, Reintree, Cottage Lake,
Woodinville, King County, Washington, United States, 98077



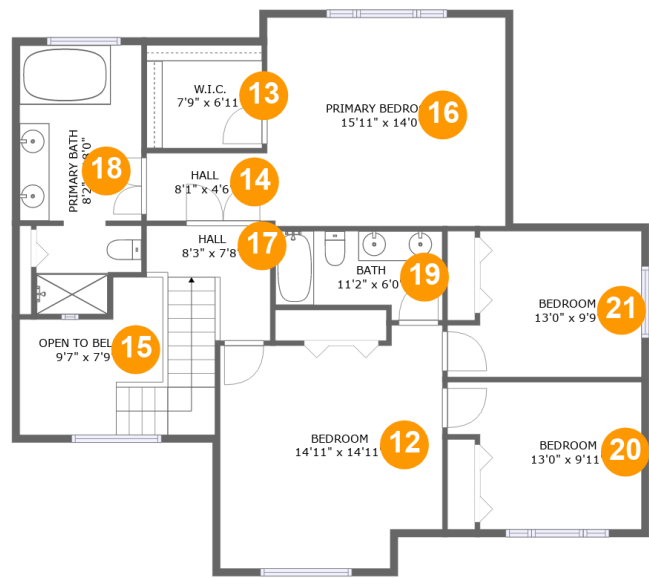
Room dimensions

Floor 1 Total sqft: 2016 Living area: 1253

#		Max Dimensions	sqft	Included
1	Kitchen	11'5" x 14'0"	155 sq. ft	Yes
2	Dining Area	11'3" x 12'6"	141 sq. ft	Yes
3	Living Room	15'2" x 15'4"	242 sq. ft	Yes
4	Family Room	16'2" x 13'10"	230 sq. ft	Yes
5	Hall	6'10" x 5'0"	28 sq. ft	Yes
6	WC	5'3" x 5'4"	28 sq. ft	Yes
7	Pantry	6'1" x 4'8"	24 sq. ft	Yes
8	Breakfast Nook	9'1" x 13'10"	124 sq. ft	Yes
9	Garage	30'3" x 22'11"	698 sq. ft	No
10	Foyer	9'9" x 8'10"	112 sq. ft	Yes
11	Laundry	7'11" x 8'1"	64 sq. ft	Yes

Home report

18625 Northeast 201st Drive, Reintree, Cottage Lake,
Woodinville, King County, Washington, United States, 98077



Room dimensions

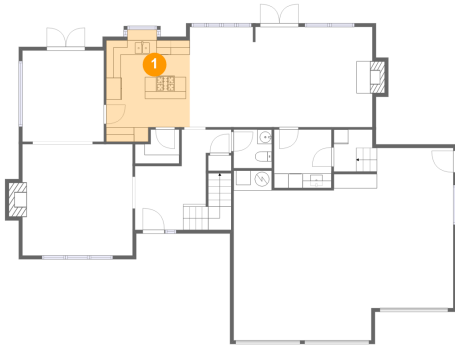
Floor 2 Total sqft: 1293 Living area: 1213

#		Max Dimensions	sqft	Included
12	Bedroom	14'11" x 14'11"	218 sq. ft	Yes
13	W.I.C.	7'9" x 6'11"	54 sq. ft	Yes
14	Hall	8'1" x 4'6"	37 sq. ft	Yes
15	Open To Below	9'7" x 7'9"	73 sq. ft	No
16	Primary Bedroom	15'11" x 14'0"	223 sq. ft	Yes
17	Hall	8'3" x 7'8"	92 sq. ft	Yes
18	Primary Bath	8'2" x 18'0"	133 sq. ft	Yes
19	Bath	11'2" x 6'0"	59 sq. ft	Yes
20	Bedroom	13'0" x 9'11"	115 sq. ft	Yes
21	Bedroom	13'0" x 9'9"	113 sq. ft	Yes

Home report

18625 Northeast 201st Drive, Reintree, Cottage Lake,
Woodinville, King County, Washington, United States, 98077

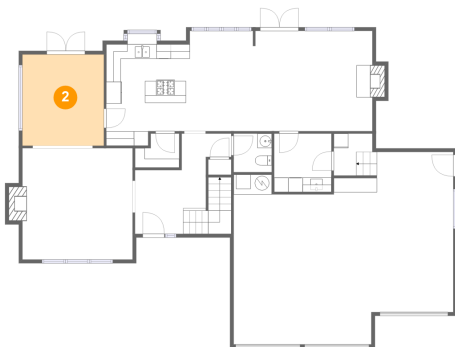
1 Floor 1 - Kitchen



Max Dimensions: 11'5" x 14'0"
Calculated Area: 155 sq. ft
Included: Yes

Heated: Yes
Finished: Yes
Enclosed: Yes
Contiguous: Yes
Permitted: Yes
Wet space: No
Addition: No
Conversion: No

2 Floor 1 - Dining Area



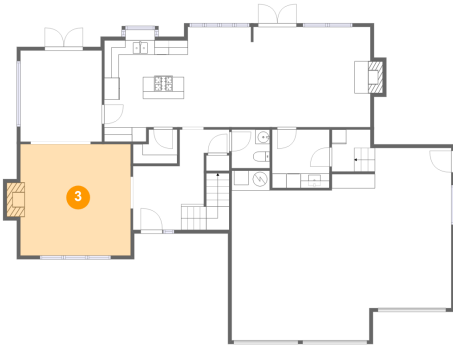
Max Dimensions: 11'3" x 12'6"
Calculated Area: 141 sq. ft
Included: Yes

Heated: Yes
Finished: Yes
Enclosed: Yes
Contiguous: Yes
Permitted: Yes
Wet space: No
Addition: No
Conversion: No

Home report

18625 Northeast 201st Drive, Reintree, Cottage Lake,
Woodinville, King County, Washington, United States, 98077

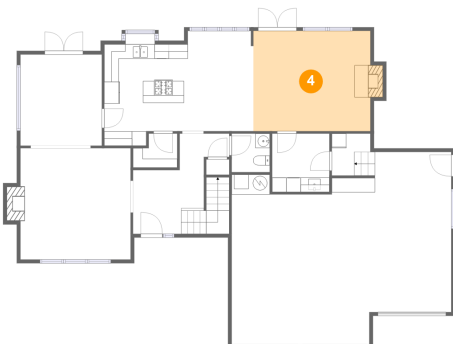
3 Floor 1 - Living Room



Max Dimensions: 15'2" x 15'4"
Calculated Area: 242 sq. ft
Included: Yes

Heated: Yes
Finished: Yes
Enclosed: Yes
Contiguous: Yes
Permitted: Yes
Wet space: No
Addition: No
Conversion: No

4 Floor 1 - Family Room



Max Dimensions: 16'2" x 13'10"
Calculated Area: 230 sq. ft
Included: Yes

Heated: Yes
Finished: Yes
Enclosed: Yes
Contiguous: Yes
Permitted: Yes
Wet space: No
Addition: No
Conversion: No

5 Floor 1 - Hall



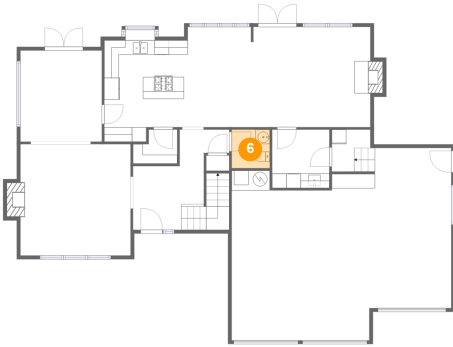
Max Dimensions: 6'10" x 5'0"
Calculated Area: 28 sq. ft
Included: Yes

Heated: Yes
Finished: Yes
Enclosed: Yes
Contiguous: Yes
Permitted: Yes
Wet space: No
Addition: No
Conversion: No

Home report

18625 Northeast 201st Drive, Reintree, Cottage Lake,
Woodinville, King County, Washington, United States, 98077

6 Floor 1 - WC



Max Dimensions: 5'3" x 5'4"
Calculated Area: 28 sq. ft
Included: Yes

Heated: Yes
Finished: Yes
Enclosed: Yes
Contiguous: Yes
Permitted: Yes
Wet space: Yes
Addition: No
Conversion: No

7 Floor 1 - Pantry



Max Dimensions: 6'1" x 4'8"
Calculated Area: 24 sq. ft
Included: Yes

Heated: Yes
Finished: Yes
Enclosed: Yes
Contiguous: Yes
Permitted: Yes
Wet space: No
Addition: No
Conversion: No

8 Floor 1 - Breakfast Nook



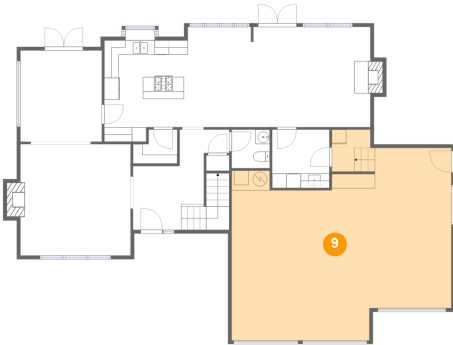
Max Dimensions: 9'1" x
13'10"
Calculated Area: 124 sq. ft
Included: Yes

Heated: Yes
Finished: Yes
Enclosed: Yes
Contiguous:
Yes
Permitted: Yes
Wet space: No
Addition: No
Conversion: No

Home report

18625 Northeast 201st Drive, Reintree, Cottage Lake,
Woodinville, King County, Washington, United States, 98077

9 Floor 1 - Garage



Max Dimensions: 30'3" x 22'11"
Calculated Area: 698 sq. ft
Included: No

Heated: No
Finished: No
Enclosed: Yes
Contiguous: Yes
Permitted: Yes
Wet space: No
Addition: No
Conversion: No

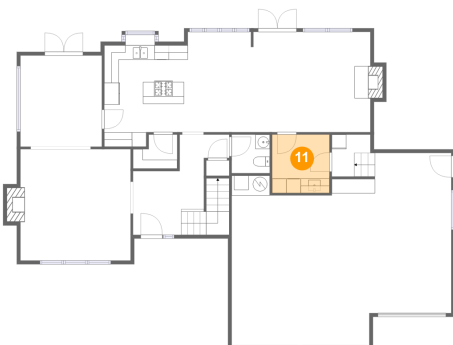
10 Floor 1 - Foyer



Max Dimensions: 9'9" x 8'10"
Calculated Area: 112 sq. ft
Included: Yes

Heated: Yes
Finished: Yes
Enclosed: Yes
Contiguous: Yes
Permitted: Yes
Wet space: No
Addition: No
Conversion: No

11 Floor 1 - Laundry



Max Dimensions: 7'11" x 8'1"
Calculated Area: 64 sq. ft
Included: Yes

Heated: Yes
Finished: Yes
Enclosed: Yes
Contiguous: Yes
Permitted: Yes
Wet space: No
Addition: No
Conversion: No

Home report

18625 Northeast 201st Drive, Reintree, Cottage Lake,
Woodinville, King County, Washington, United States, 98077

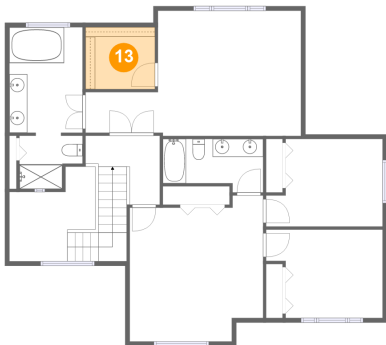
12 Floor 2 - Bedroom



Max Dimensions: 14'11" x 14'11"
Calculated Area: 218 sq. ft
Included: Yes

Heated: Yes
Finished: Yes
Enclosed: Yes
Contiguous: Yes
Permitted: Yes
Wet space: No
Addition: No
Conversion: No

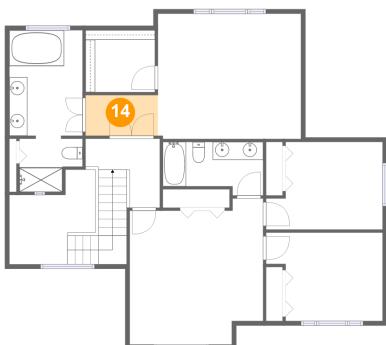
13 Floor 2 - W.I.C.



Max Dimensions: 7'9" x 6'11"
Calculated Area: 54 sq. ft
Included: Yes

Heated: Yes
Finished: Yes
Enclosed: Yes
Contiguous: Yes
Permitted: Yes
Wet space: No
Addition: No
Conversion: No

14 Floor 2 - Hall

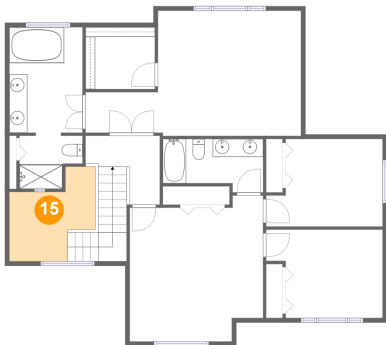


Max Dimensions: 8'1" x 4'6"
Calculated Area: 37 sq. ft
Included: Yes

Heated: Yes
Finished: Yes
Enclosed: Yes
Contiguous: Yes
Permitted: Yes
Wet space: No
Addition: No
Conversion: No

18625 Northeast 201st Drive, Reintree, Cottage Lake,
Woodinville, King County, Washington, United States, 98077

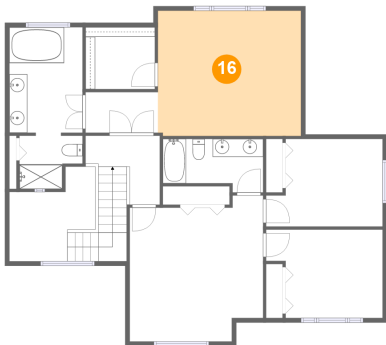
15 Floor 2 - Open To Below



Max Dimensions: 9'7" x 7'9"
Calculated Area: 73 sq. ft
Included: No

Heated: No
Finished: No
Enclosed: No
Contiguous: Yes
Permitted: No
Wet space: No
Addition: No
Conversion: No

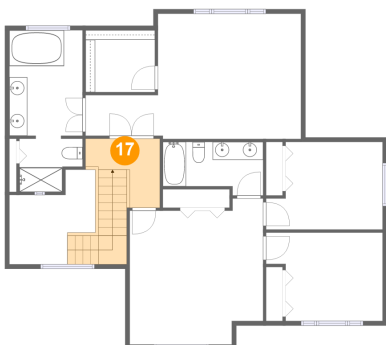
16 Floor 2 - Primary Bedroom



Max Dimensions: 15'11" x 14'0"
Calculated Area: 223 sq. ft
Included: Yes

Heated: Yes
Finished: Yes
Enclosed: Yes
Contiguous: Yes
Permitted: Yes
Wet space: No
Addition: No
Conversion: No

17 Floor 2 - Hall



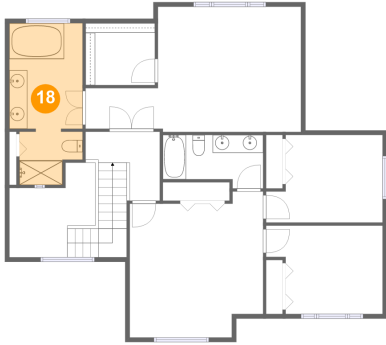
Max Dimensions: 8'3" x 7'8"
Calculated Area: 92 sq. ft
Included: Yes

Heated: Yes
Finished: Yes
Enclosed: Yes
Contiguous: Yes
Permitted: Yes
Wet space: No
Addition: No
Conversion: No

Home report

18625 Northeast 201st Drive, Reintree, Cottage Lake,
Woodinville, King County, Washington, United States, 98077

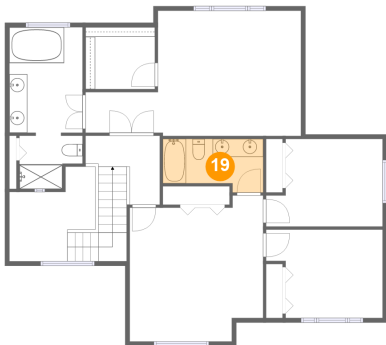
18 Floor 2 - Primary Bath



Max Dimensions: 8'2" x 18'0"
Calculated Area: 133 sq. ft
Included: Yes

Heated: Yes
Finished: Yes
Enclosed: Yes
Contiguous: Yes
Permitted: Yes
Wet space: Yes
Addition: No
Conversion: No

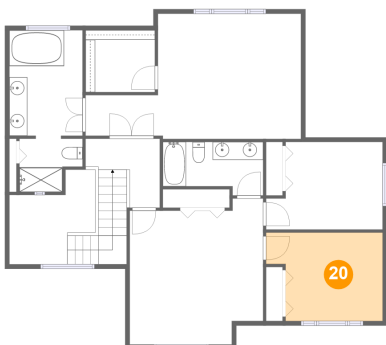
19 Floor 2 - Bath



Max Dimensions: 11'2" x 6'0"
Calculated Area: 59 sq. ft
Included: Yes

Heated: Yes
Finished: Yes
Enclosed: Yes
Contiguous: Yes
Permitted: Yes
Wet space: Yes
Addition: No
Conversion: No

20 Floor 2 - Bedroom

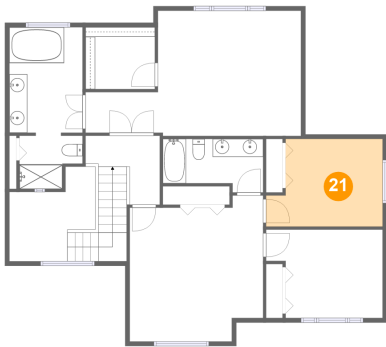


Max Dimensions: 13'0" x 9'11"
Calculated Area: 115 sq. ft
Included: Yes

Heated: Yes
Finished: Yes
Enclosed: Yes
Contiguous: Yes
Permitted: Yes
Wet space: No
Addition: No
Conversion: No

18625 Northeast 201st Drive, Reintree, Cottage Lake,
Woodinville, King County, Washington, United States, 98077

21 Floor 2 - Bedroom



Max Dimensions: 13'0" x 9'9"
Calculated Area: 113 sq. ft
Included: Yes

Heated: Yes
Finished: Yes
Enclosed: Yes
Contiguous: Yes
Permitted: Yes
Wet space: No
Addition: No
Conversion: No