

*The*  
WATERLEAF

2841 SQ.FT.



E



B

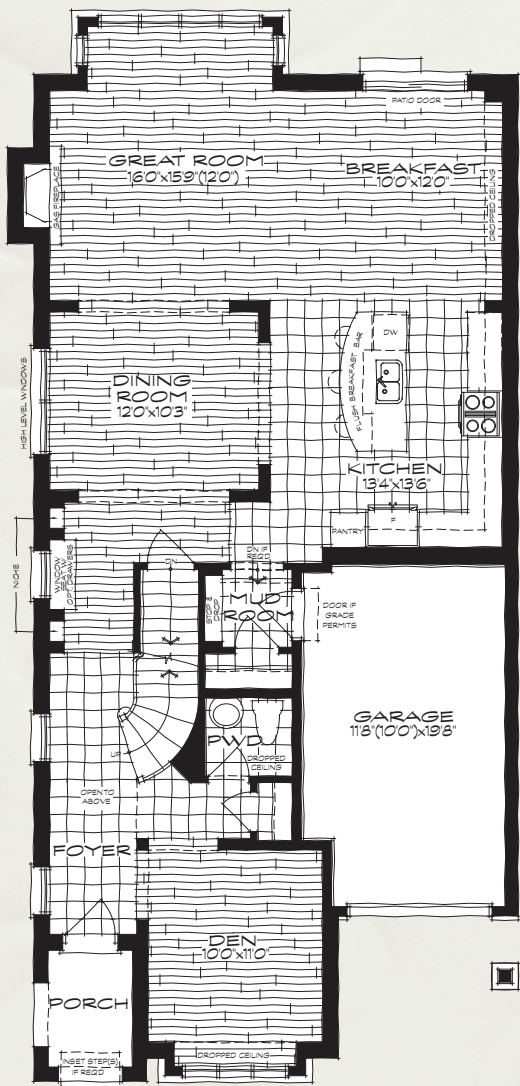


C

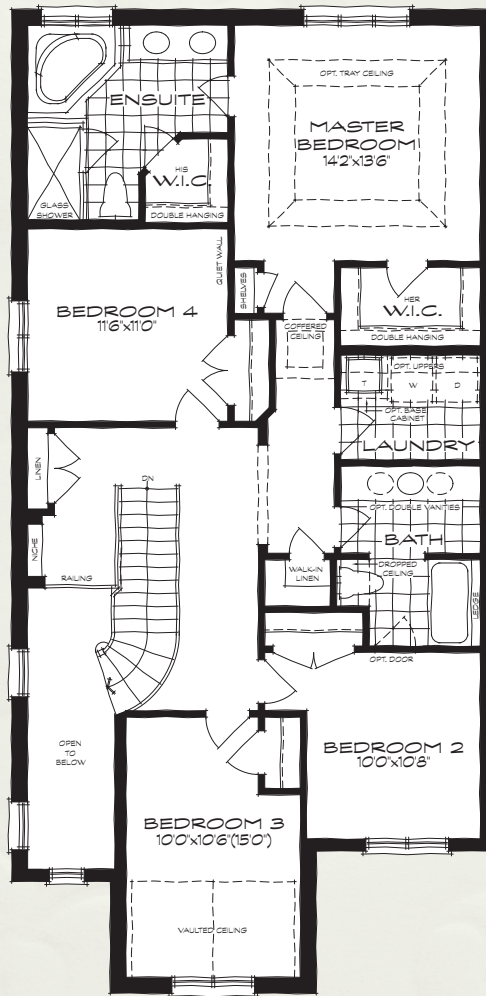


D

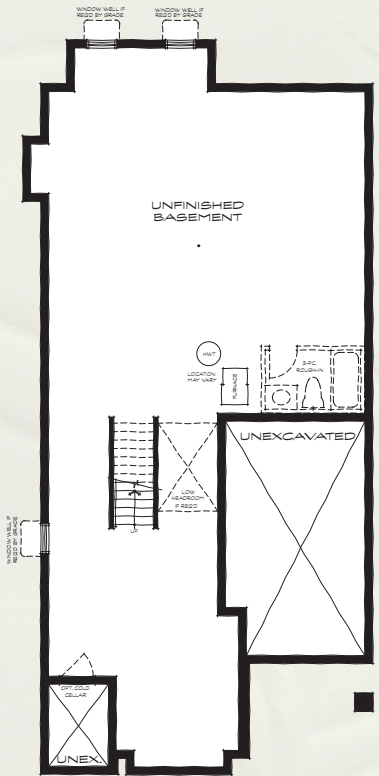
*34' Homes*



GROUND FLOOR PLAN

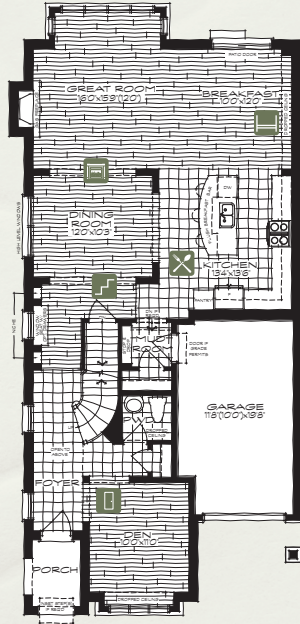


SECOND FLOOR PLAN

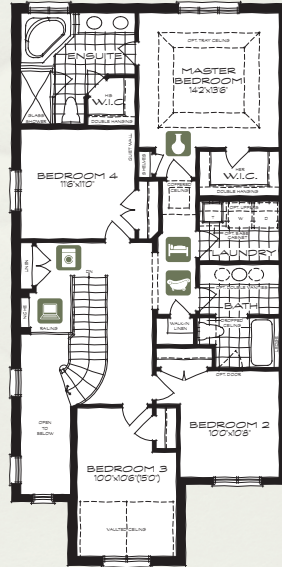


BASEMENT PLAN

# WATERLEAF 2841 SQ.FT.




GROUND FLOOR PLAN





SECOND FLOOR PLAN


## “ARCHITECT’S CHOICE” OPTIONS

### GROUND FLOOR OPTIONS

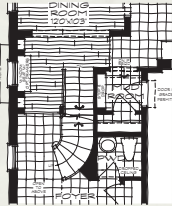
 **The Next Step**  
(Additional 164 Sq.Ft.)

 **Alternate Kitchen Layout**

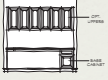
 **Alternate Fireplace Location**

 **Contemporary Linear Fireplace**

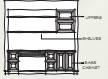
**Ground Floor Plan**



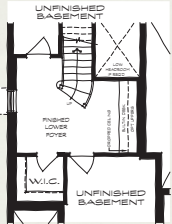
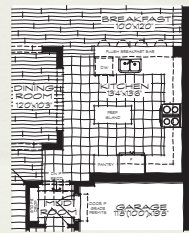
**Interior Elevation**  
Built-In Desk w/Base Cabinet & Opt. Uppers




**Interior Elevation**  
Built-In Desk w/Base Cabinet & Uppers



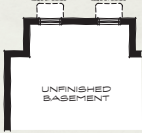
**Basement Plan**


**Ground Floor Plan**




**Basement Plan**




**Interior Elevation**  
Gas Fireplace




**Ground Floor Plan**



**Basement Plan**




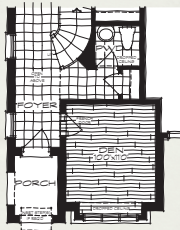
**Interior Elevation**  
Contemporary Linear Fireplace




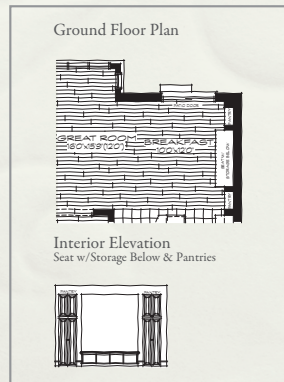
## "ARCHITECT'S CHOICE" OPTIONS

### GROUND FLOOR OPTIONS


 **Enclosed Den**

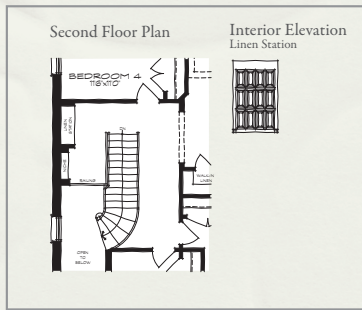


 **Breakfast Nook w/Pantries**

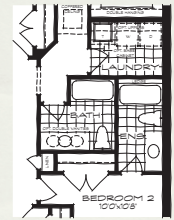


### SECOND FLOOR OPTIONS


 **Linen Station**

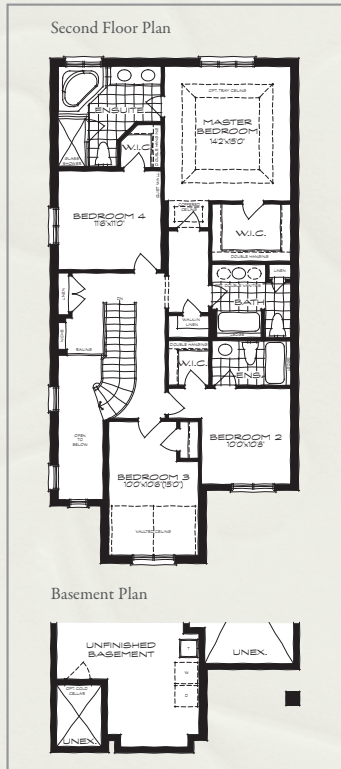


 **Third Bath Plan**

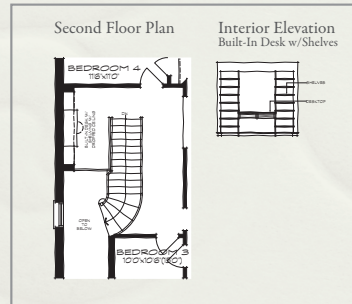



### SECOND FLOOR OPTIONS

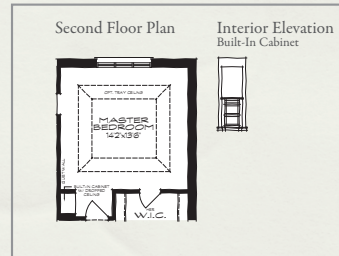
 **4 Bedroom Plan w/3 Bath & Laundry Relocated To Basement**




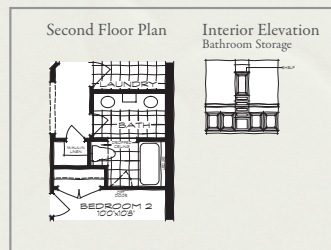
 **Built-In Desk In Lieu Of Linen Closet & Niche**



 **Built-In Cabinet**



 **Alternate Main Bath**



ADDITIONAL ARCHITECT'S CHOICE OPTIONS AVAILABLE FOR THIS HOME:

**SECOND FLOOR CHOICES**

- 9' CEILING PACKAGE**  
INCLUDES:
- APPROX. 12" HIGHER CEILINGS
  - TALLER SECOND FLOOR WINDOWS
  - TRANSOM OVER BALCONY DOORS (WHERE APPLICABLE)
  - STAIR CONFIGURATION AND/OR MINOR DESIGN CHANGES MAY BE REQUIRED TO ACCOMMODATE
  - APPROX. 80" DOORS (WHERE APPLICABLE)

**BASEMENT CHOICES**

- COLD CELLAR**  
INCLUDES:
- PARTIAL AREA UNDER THE FRONT PORCH SPECIFIC TO THE ELEVATION PURCHASED
  - INSULATED DOOR, OVERHEAD LIGHT, FLOOR DRAIN, AND VENT

**NO3406**

ALL ILLUSTRATIONS ARE ARTIST'S CONCEPT. SPECIFICATIONS, TERMS AND CONDITIONS ARE SUBJECT TO CHANGE WITHOUT NOTICE. THESE FLOOR PLANS AND ROOM DIMENSIONS APPLY TO ELEVATION "E" ON THIS MODEL TYPE. NOTE THAT PLANS AND ROOM DIMENSIONS MAY VARY ACCORDING TO ELEVATION. PLAN MAY BE BUILT AS THE MIRROR IMAGE. "QUIET WALL" (WHERE SHOWN) MEANS A WALL IN WHICH ADDITIONAL INSULATION HAS BEEN INSTALLED. THIS WILL ASSIST IN REDUCING, BUT NOT ELIMINATING, AMBIENT SOUND FROM ADJACENT ROOMS AND MECHANICAL SYSTEMS. THE EXTENT OF THE REDUCTION WILL VARY DEPENDING UPON VARIOUS FACTORS INCLUDING, WITHOUT LIMITATION, THE PRESENCE AND EXTENT OF MECHANICAL SYSTEMS LOCATED IN THE WALL. PLEASE CONSULT YOUR SALES REPRESENTATIVE. NOT ALL LISTS CAN ACCOMMODATE THE STANDARD 80" PROJECTING FIREPLACE DUE TO MUNICIPAL EASEMENT CONDITIONS/RESTRICTIONS. IF THE LOT CANNOT ACCOMMODATE THE STANDARD 80" PROJECTING FIREPLACE, THE ALTERNATE FIREPLACE LOCATION MUST BE PURCHASED. E.B.O.E. NOVEMBER 2012 - COPYRIGHT 2012 - MATTHEW HOMES LIMITED. REPRINT JANUARY 2015.