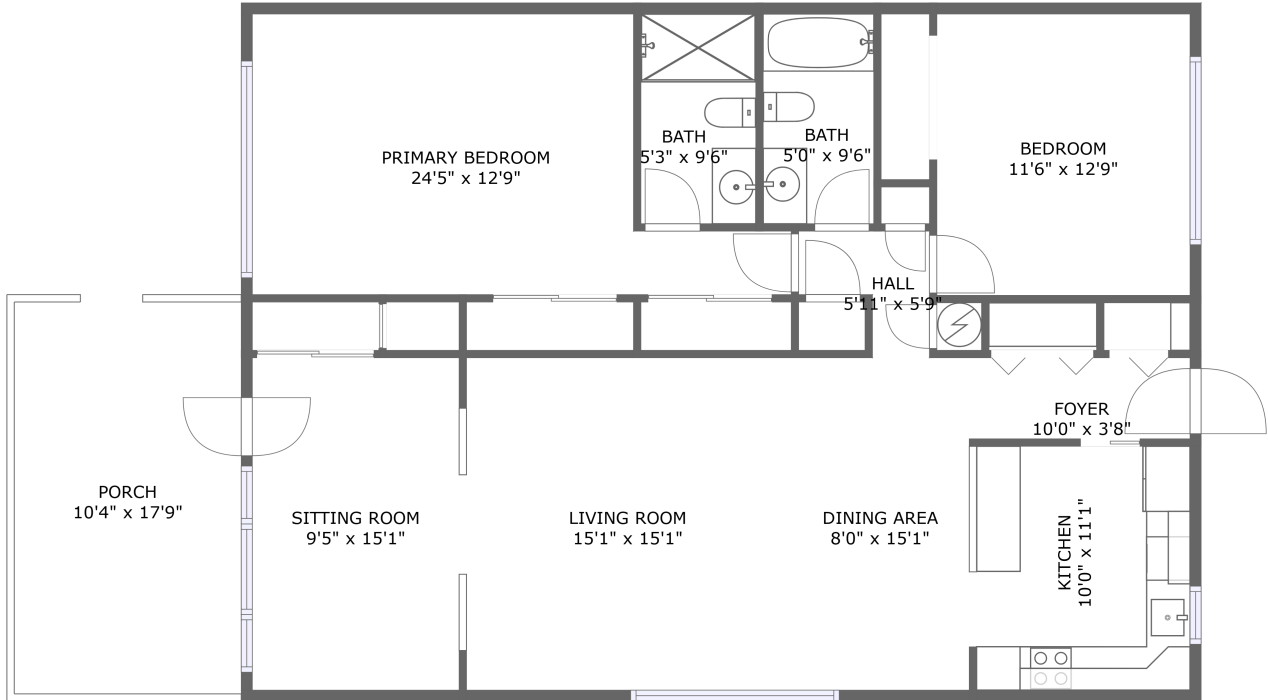


2284 Spanish Drive, On Top of the World, Clearwater, Pinellas County, Florida, United



FLOOR 1

Property Summary

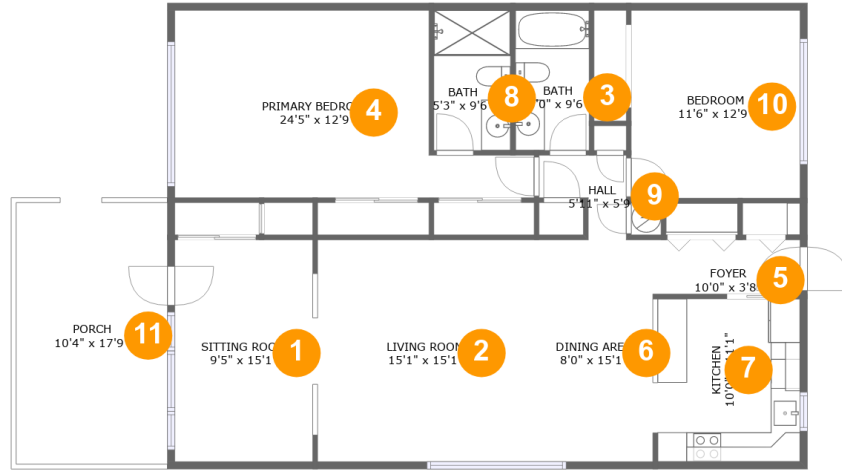
 **0** garages  **2** bedrooms  **2** bathrooms  **0** half baths

 **1** floors

 **1,306** Gross Living Area sqft

 **1,489** total sqft

2284 Spanish Drive, On Top of the World, Clearwater, Pinellas County, Florida, United



Room Dimensions

Floor 1

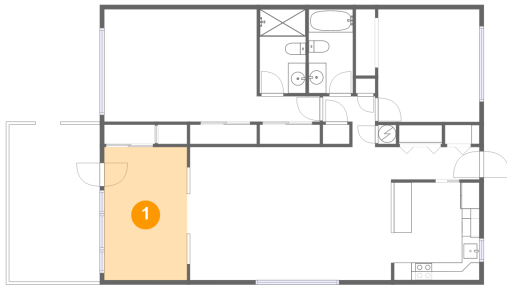
Total sqft: 1489

Living area: 1306

#	Room name	Dimensions	Area (sqft)	Counted as Living Area
1	Sitting Room	9'5" x 15'1"	141 sq. ft	Yes
2	Living Room	15'1" x 15'1"	226 sq. ft	Yes
3	Bath	5'0" x 9'6"	48 sq. ft	Yes
4	Primary Bedroom	24'5" x 12'9"	241 sq. ft	Yes
5	Foyer	10'0" x 3'8"	37 sq. ft	Yes
6	Dining Area	8'0" x 15'1"	122 sq. ft	Yes
7	Kitchen	10'0" x 11'1"	110 sq. ft	Yes
8	Bath	5'3" x 9'6"	50 sq. ft	Yes
9	Hall	5'11" x 5'9"	24 sq. ft	Yes
10	Bedroom	11'6" x 12'9"	147 sq. ft	Yes
11	Porch	10'4" x 17'9"	183 sq. ft	No

2284 Spanish Drive, On Top of the World, Clearwater, Pinellas County, Florida, United

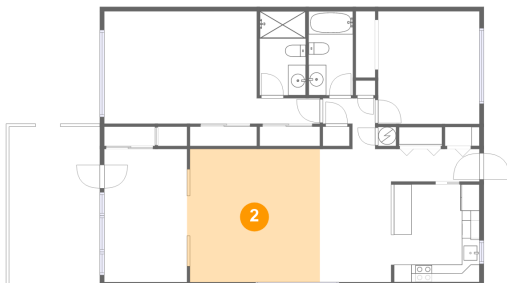
1 Floor 1 - Sitting Room



Dimensions: 9'5" x 15'1"
Area: 141 sq. ft
Counted as Living Area:
Yes

Heated: Yes
Finished: Yes
Enclosed: Yes
Contiguous:
Yes
Permitted: Yes
Wet Space: No
Addition: No
Conversion: No

2 Floor 1 - Living Room

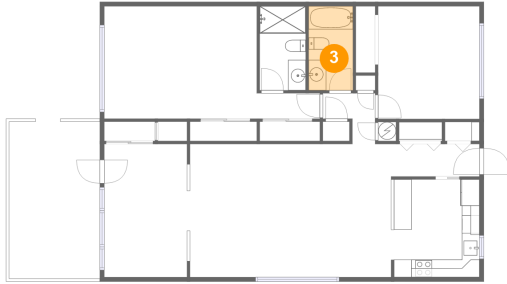


Dimensions: 15'1" x 15'1"
Area: 226 sq. ft
Counted as Living Area:
Yes

Heated: Yes
Finished: Yes
Enclosed: Yes
Contiguous:
Yes
Permitted: Yes
Wet Space: No
Addition: No
Conversion: No

2284 Spanish Drive, On Top of the World, Clearwater, Pinellas County, Florida, United

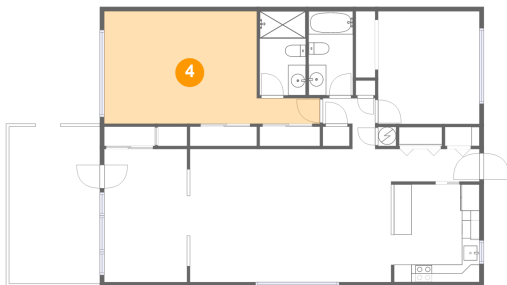
3 Floor 1 - Bath



Dimensions: 5'0" x 9'6"
Area: 48 sq. ft
Counted as Living Area:
Yes

Heated: Yes
Finished: Yes
Enclosed: Yes
Contiguous:
Yes
Permitted: Yes
Wet Space: Yes
Addition: No
Conversion: No

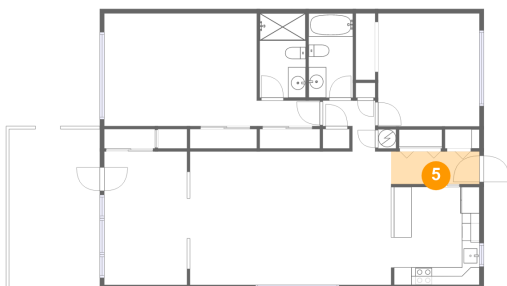
4 Floor 1 - Primary Bedroom



Dimensions: 24'5" x 12'9"
Area: 241 sq. ft
Counted as Living Area:
Yes

Heated: Yes
Finished: Yes
Enclosed: Yes
Contiguous:
Yes
Permitted: Yes
Wet Space: No
Addition: No
Conversion: No

5 Floor 1 - Foyer

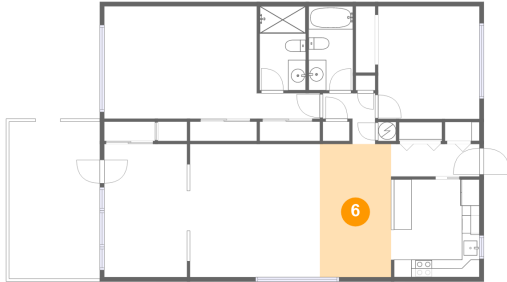


Dimensions: 10'0" x 3'8"
Area: 37 sq. ft
Counted as Living Area:
Yes

Heated: Yes
Finished: Yes
Enclosed: Yes
Contiguous:
Yes
Permitted: Yes
Wet Space: No
Addition: No
Conversion: No

2284 Spanish Drive, On Top of the World, Clearwater, Pinellas County, Florida, United

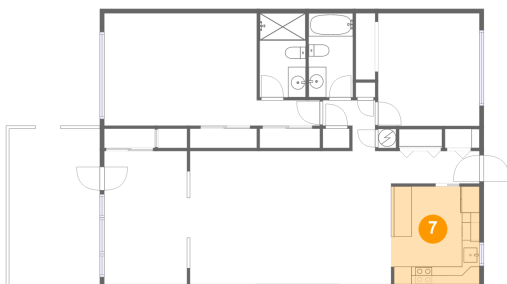
6 Floor 1 - Dining Area



Dimensions: 8'0" x 15'1"
Area: 122 sq. ft
Counted as Living Area:
Yes

Heated: Yes
Finished: Yes
Enclosed: Yes
Contiguous:
Yes
Permitted: Yes
Wet Space: No
Addition: No
Conversion: No

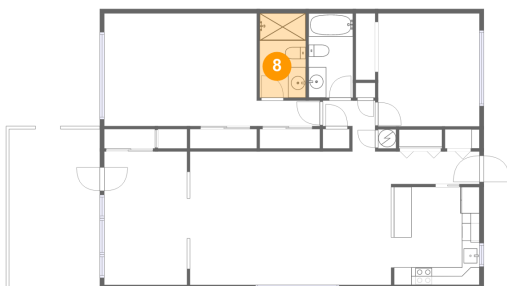
7 Floor 1 - Kitchen



Dimensions: 10'0" x 11'1"
Area: 110 sq. ft
Counted as Living Area:
Yes

Heated: Yes
Finished: Yes
Enclosed: Yes
Contiguous:
Yes
Permitted: Yes
Wet Space: No
Addition: No
Conversion: No

8 Floor 1 - Bath

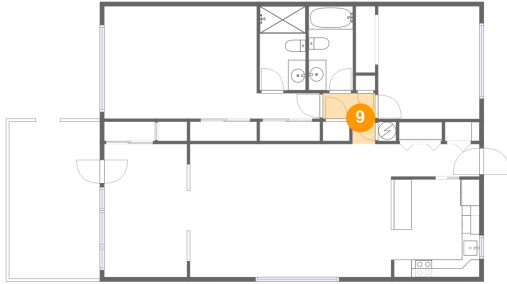


Dimensions: 5'3" x 9'6"
Area: 50 sq. ft
Counted as Living Area:
Yes

Heated: Yes
Finished: Yes
Enclosed: Yes
Contiguous:
Yes
Permitted: Yes
Wet Space: Yes
Addition: No
Conversion: No

2284 Spanish Drive, On Top of the World, Clearwater, Pinellas County, Florida, United

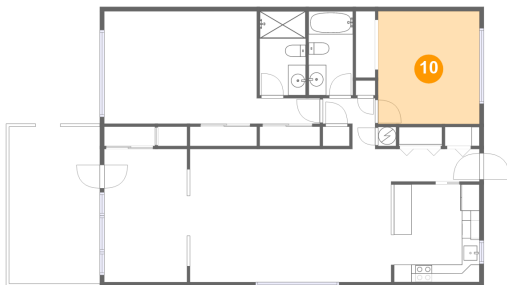
9 Floor 1 - Hall



Dimensions: 5'11" x 5'9"
Area: 24 sq. ft
Counted as Living Area:
Yes

Heated: Yes
Finished: Yes
Enclosed: Yes
Contiguous:
Yes
Permitted: Yes
Wet Space: No
Addition: No
Conversion: No

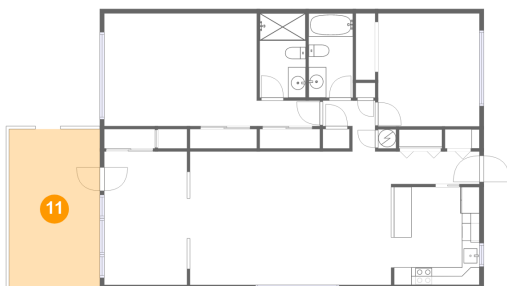
10 Floor 1 - Bedroom



Dimensions: 11'6" x 12'9"
Area: 147 sq. ft
Counted as Living Area:
Yes

Heated: Yes
Finished: Yes
Enclosed: Yes
Contiguous:
Yes
Permitted: Yes
Wet Space: No
Addition: No
Conversion: No

11 Floor 1 - Porch



Dimensions: 10'4" x 17'9"
Area: 183 sq. ft
Counted as Living Area: No

Heated: No
Finished: Yes
Enclosed: No
Contiguous: Yes
Permitted: Yes
Wet Space: No
Addition: No
Conversion: No