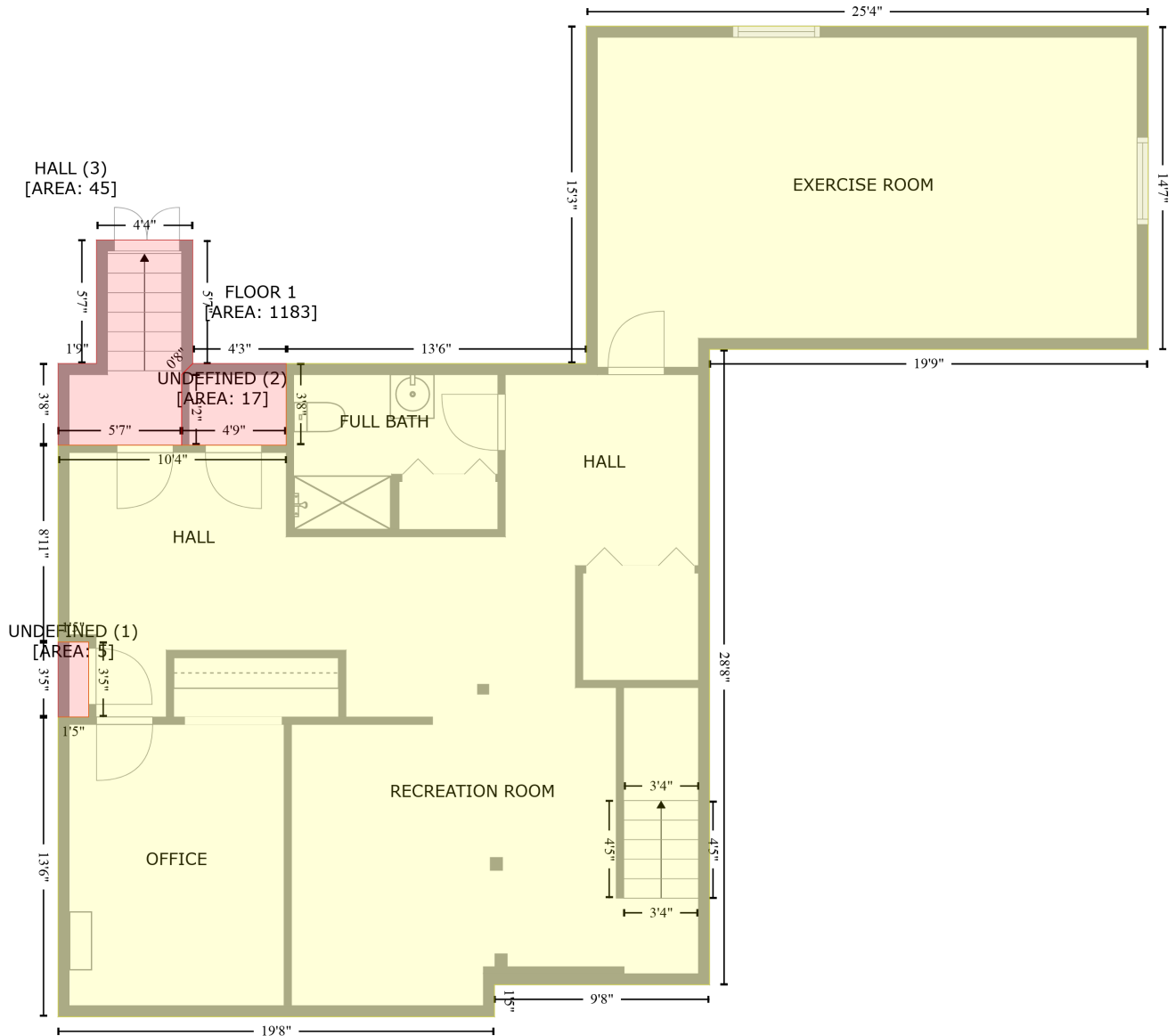


# 12 Morin Rd, Newburyport, MA, US

Gross Living Area: 2622 sq. ft



Space	Area (sq. ft)	Calculation <small>Coordinate Polygon Area Algorithm using inches</small>
FLOOR 1 (Living area)	1183	$-\left((601.4 + 601.4) * (13.3 - 188.3) + (601.4 + 363.9) * (188.3 - 188.3) + (363.9 + 363.9) * (188.3 - 532.4) + (363.9 + 247.5) * (532.4 - 532.4) + (247.5 + 247.5) * (532.4 - 549.7) + (247.5 + 11.2) * (549.7 - 549.7) + (11.2 + 11.2) * (549.7 - 387.4) + (11.2 + 27.8) * (387.4 - 387.4) + (27.8 + 27.8) * (387.4 - 346.8) + (27.8 + 11.2) * (346.8 - 346.8) + (11.2 + 11.2) * (346.8 - 240.2) + (11.2 + 134.7) * (240.2 - 240.2) + (134.7 + 134.7) * (240.2 - 196) + (134.7 + 297.2) * (196 - 196) + (297.2 + 297.2) * (196 - 13.3) + (297.2 + 601.4) * (13.3 - 13.3)\right) * 0.5 + 0.00694$
UNDEFINED	5	$-\left((27.8 + 27.8) * (346.8 - 387.4) + (27.8 + 11.2) * (387.4 - 387.4) + (11.2 + 11.2) * (387.4 - 346.8)\right)$

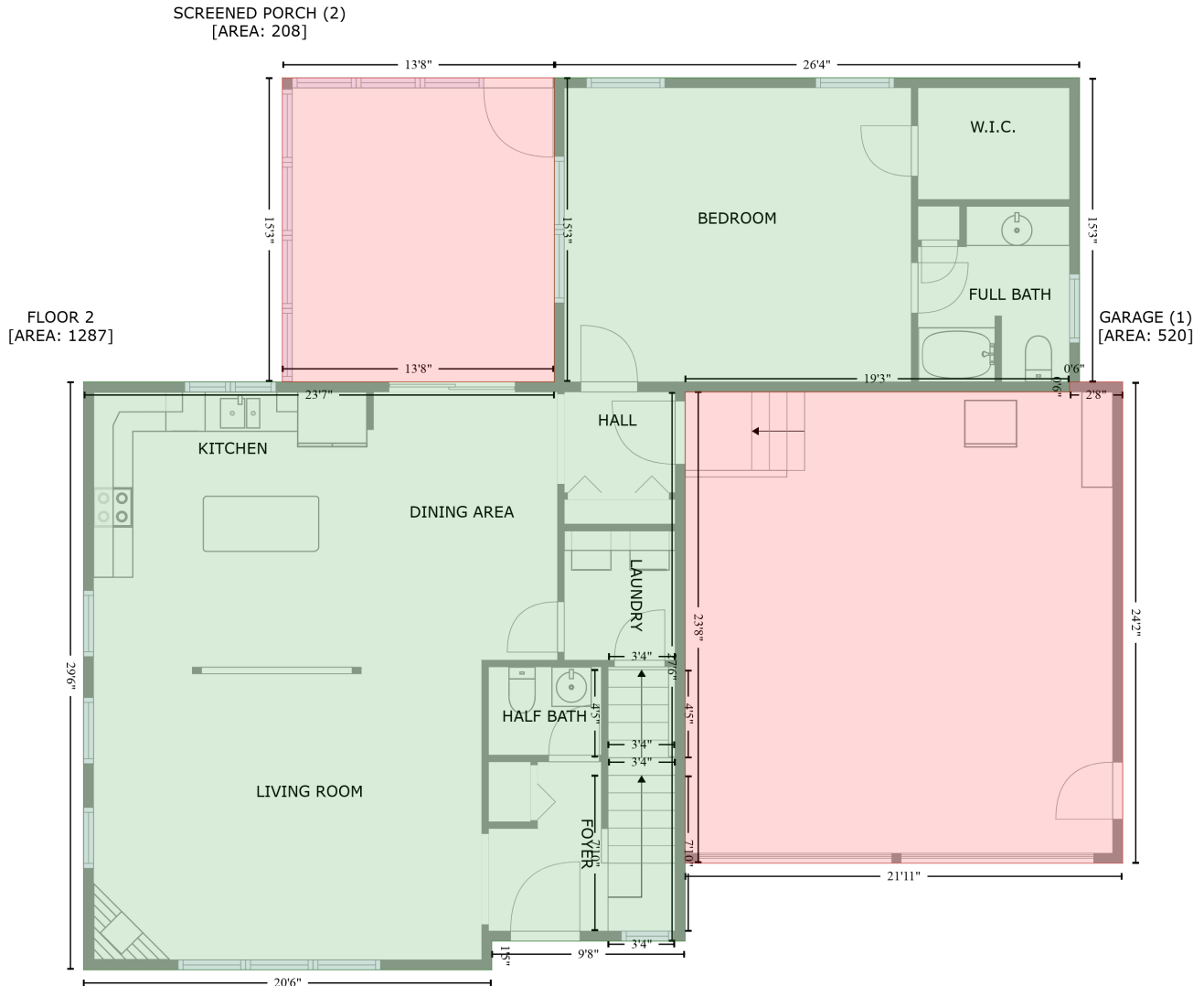
# 12 Morin Rd, Newburyport, MA, US

Gross Living Area: 2622 sq. ft

Space	Area (sq. ft)	Calculation <small>Coordinate Polygon Area Algorithm using inches</small>
(Non-living area)		$+ (11.2 + 27.8) * (346.8 - 346.8) * 0.5 * 0.00694$
UNDEFINED (Non-living area)	17	$-((134.7 + 134.7) * (196 - 240.2) + (134.7 + 78.1) * (240.2 - 240.2) + (78.1 + 78.1) * (240.2 - 202) + (78.1 + 84.1) * (202 - 196) + (84.1 + 134.7) * (196 - 196)) * 0.5 * 0.00694$
HALL (Non-living area)	45	$-((84.1 + 84.1) * (129 - 196) + (84.1 + 78.1) * (196 - 202) + (78.1 + 78.1) * (202 - 240.2) + (78.1 + 11.2) * (240.2 - 240.2) + (11.2 + 11.2) * (240.2 - 196) + (11.2 + 32) * (196 - 196) + (32 + 32) * (196 - 129) + (32 + 84.1) * (129 - 129)) * 0.5 * 0.00694$

# 12 Morin Rd, Newburyport, MA, US

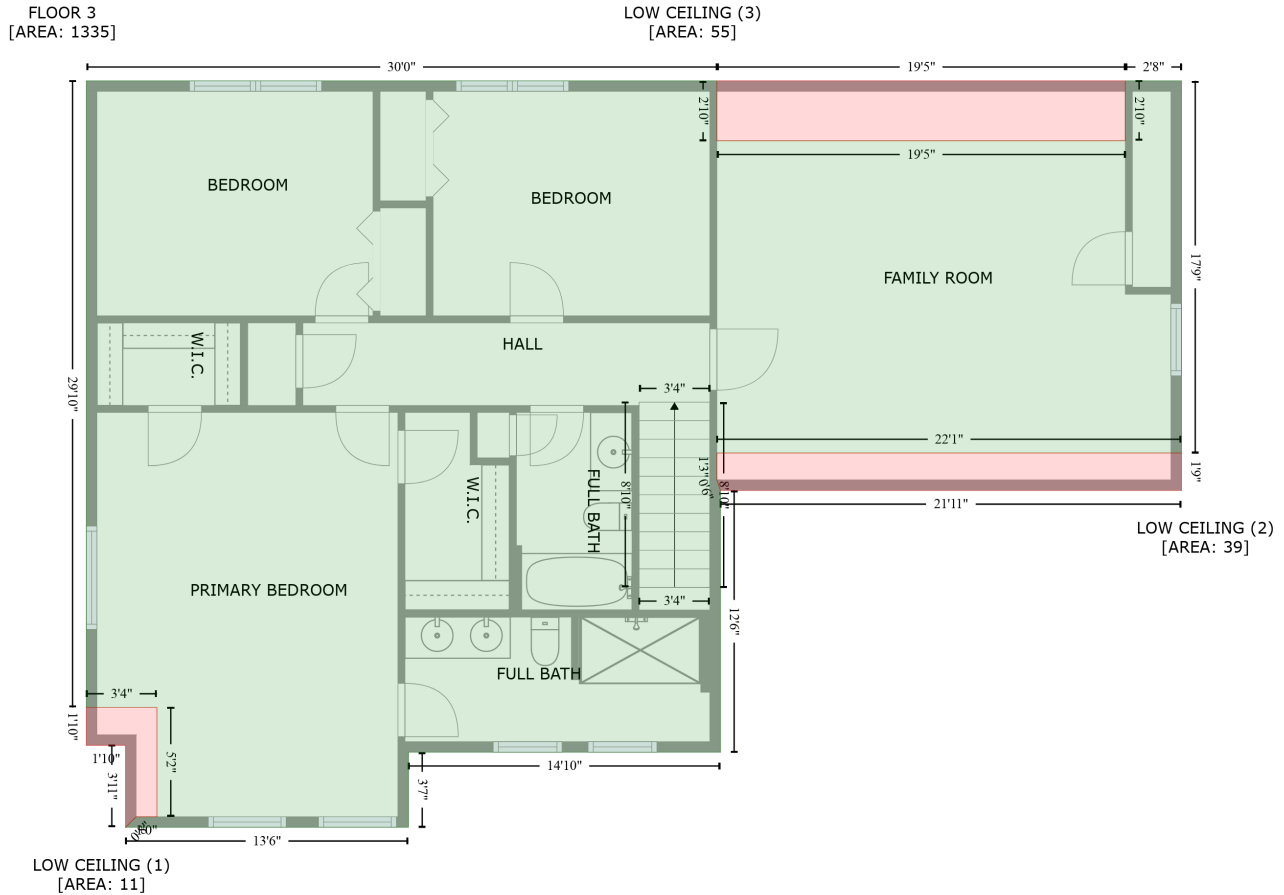
Gross Living Area: 2622 sq. ft



Space	Area (sq. ft)	Calculation <small>Coordinate Polygon Area Algorithm using inches</small>
FLOOR 2 (Living area)	1287	$-\left((594.2 + 594.2) * (20.1 - 203.1) + (594.2 + 588.2) * (203.1 - 203.1) + (588.2 + 588.2) * (203.1 - 209.1) + (588.2 + 356.7) * (209.1 - 209.1) + (356.7 + 356.7) * (209.1 - 539.5) + (356.7 + 240.2) * (539.5 - 539.5) + (240.2 + 240.2) * (539.5 - 556.8) + (240.2 + -5.6) * (556.8 - 556.8) + (-5.6 + -5.6) * (556.8 - 203.1) + (-5.6 + 277.9) * (203.1 - 203.1) + (277.9 + 277.9) * (203.1 - 20.1) + (277.9 + 594.2) * (20.1 - 20.1)\right) * 0.5 * 0.00694$
GARAGE (Non-living area)	520	$-\left((620.2 + 620.2) * (203.1 - 492.6) + (620.2 + 356.7) * (492.6 - 492.6) + (356.7 + 356.7) * (492.6 - 209.1) + (356.7 + 588.2) * (209.1 - 209.1) + (588.2 + 588.2) * (209.1 - 203.1) + (588.2 + 620.2) * (203.1 - 203.1)\right) * 0.5 * 0.00694$
SCREENED PORCH (Non-living area)	208	$-\left((277.9 + 277.9) * (20.1 - 203.1) + (277.9 + 114.1) * (203.1 - 203.1) + (114.1 + 114.1) * (203.1 - 20.1) + (114.1 + 277.9) * (20.1 - 20.1)\right) * 0.5 * 0.00694$

# 12 Morin Rd, Newburyport, MA, US

Gross Living Area: 2622 sq. ft



Space	Area (sq. ft)	Calculation
FLOOR 3 (Living area)	1335	Coordinate Polygon Area Algorithm using inches $-((338.2 + 338.2) * (186.6 - 220.8) + (338.2 + 571.6) * (220.8 - 220.8) + (571.6 + 571.6) * (220.8 - 186.6) + (571.6 + 603.7) * (186.6 - 186.6) + (603.7 + 603.7) * (186.6 - 399.3) + (603.7 + 338.2) * (399.3 - 399.3) + (338.2 + 338.2) * (399.3 - 414.6) + (338.2 + 340.2) * (414.6 - 420.6) + (340.2 + 340.2) * (420.6 - 570.2) + (340.2 + 162) * (570.2 - 570.2) + (162 + 162) * (570.2 - 613.1) + (162 + 0.4) * (613.1 - 613.1) + (0.4 + 6.4) * (613.1 - 607.1) + (6.4 + 18.3) * (607.1 - 607.1) + (18.3 + 18.3) * (607.1 - 544.7) + (18.3 + -22.1) * (544.7 - 544.7) + (-22.1 + -22.1) * (544.7 - 186.6) + (-22.1 + 338.2) * (186.6 - 186.6)) * 0.5 * 0.00694$
LOW CEILING (Non-living area)	11	$-((18.3 + 18.3) * (544.7 - 607.1) + (18.3 + 6.4) * (607.1 - 607.1) + (6.4 + 0.4) * (607.1 - 613.1) + (0.4 + 0.4) * (613.1 - 566.3) + (0.4 + -22.1) * (566.3 - 566.3) + (-22.1 + -22.1) * (566.3 - 544.7) + (-22.1 + 18.3) * (544.7 - 544.7)) * 0.5 * 0.00694$
LOW CEILING (Non-living area)	39	$-((603.7 + 603.7) * (399.3 - 420.6) + (603.7 + 340.2) * (420.6 - 420.6) + (340.2 + 338.2) * (420.6 - 414.6) + (338.2 + 338.2) * (414.6 - 399.3) + (338.2 + 603.7) * (399.3 - 399.3)) * 0.5 * 0.00694$
LOW CEILING (Non-living area)	55	$-((571.6 + 571.6) * (186.6 - 220.8) + (571.6 + 338.2) * (220.8 - 220.8) + (338.2 + 338.2) * (220.8 - 186.6) + (338.2 + 571.6) * (186.6 - 186.6)) * 0.5 * 0.00694$