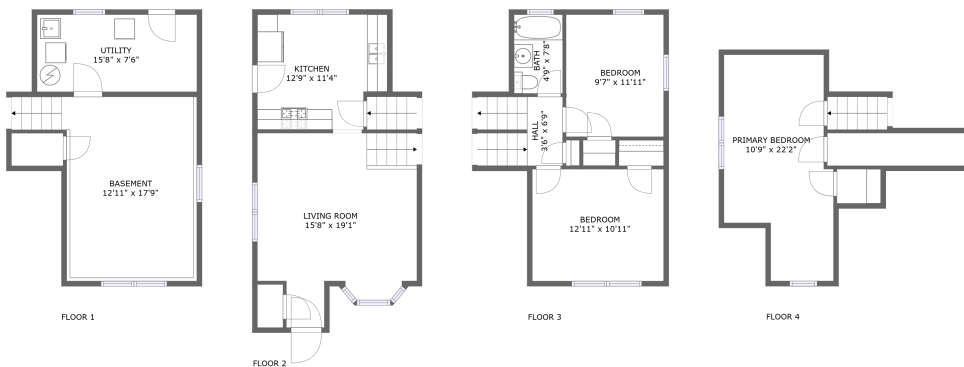
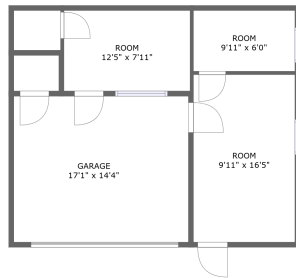
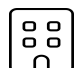




1316 Pershing Avenue, Wheaton, DuPage County, Illinois, United States, 60189

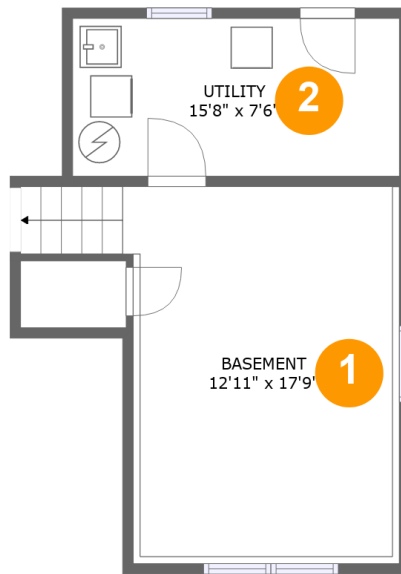


Property summary

 **1** Garages  **3** Bedrooms  **1** Bathrooms  **0** Half baths

 **4** Floors  **1,074** Gross living area sqft  **2,360** Total sqft

**1316 Pershing Avenue, Wheaton, DuPage County,
Illinois, United States, 60189**



Room dimensions

Floor 1

Total sqft: 440

Living area: 0

#		Dimensions	sqft	Counted as living area
1	Basement	12'11" x 17'9"	249 sq. ft	No
2	Utility	15'8" x 7'6"	119 sq. ft	No

1316 Pershing Avenue, Wheaton, DuPage County, Illinois, United States, 60189



Room dimensions

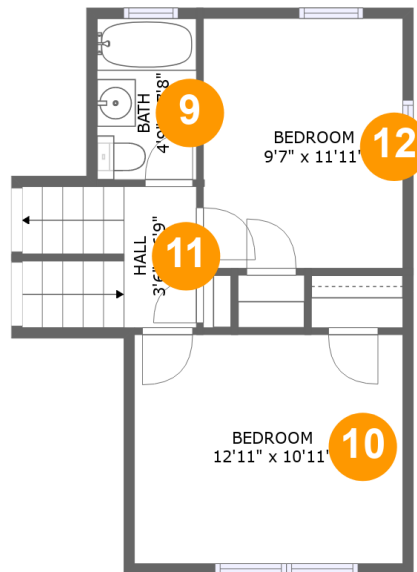
Floor 2

Total sqft: 1151

Living area: 444

#		Dimensions	sqft	Counted as living area
3	Room	9'11" x 6'0"	59 sq. ft	No
4	Room	9'11" x 16'5"	163 sq. ft	No
5	Kitchen	12'9" x 11'4"	135 sq. ft	Yes
6	Room	12'5" x 7'11"	98 sq. ft	No
7	Living Room	15'8" x 19'1"	244 sq. ft	Yes
8	Garage	17'1" x 14'4"	245 sq. ft	No

1316 Pershing Avenue, Wheaton, DuPage County,
Illinois, United States, 60189



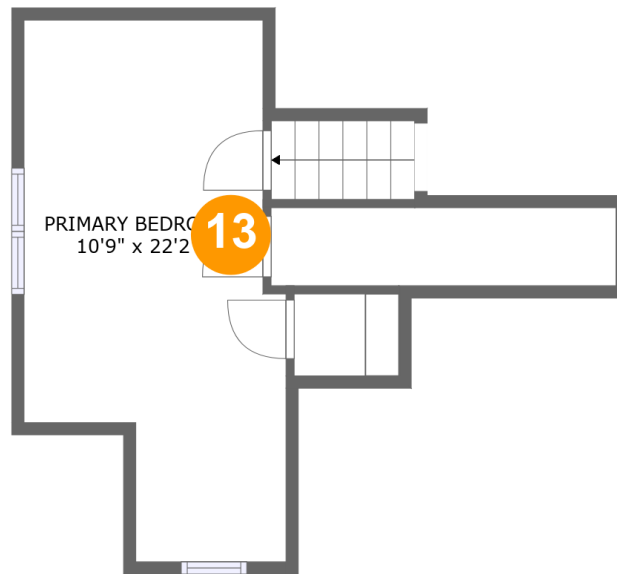
Room dimensions

Floor 3

Total sqft: 433 Living area: 433

#		Dimensions	sqft	Counted as living area
9	Bath	4'9" x 7'8"	37 sq. ft	Yes
10	Bedroom	12'11" x 10'11"	141 sq. ft	Yes
11	Hall	3'6" x 6'9"	55 sq. ft	Yes
12	Bedroom	9'7" x 11'11"	115 sq. ft	Yes

**1316 Pershing Avenue, Wheaton, DuPage County,
Illinois, United States, 60189**



Room dimensions

Floor 4

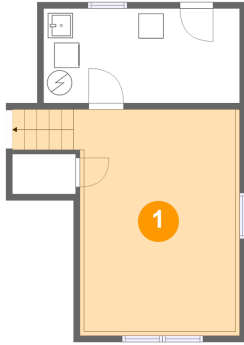
Total sqft: 336

Living area: 197

#		Dimensions	sqft	Counted as living area
13	Primary Bedroom	10'9" x 22'2"	139 sq. ft	Yes

**1316 Pershing Avenue, Wheaton, DuPage County,
Illinois, United States, 60189**

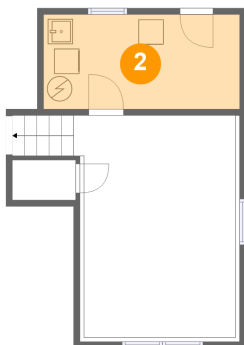
1 Floor 1 - Basement



Dimensions: 12'11" x 17'9"
Area: 249 sq. ft
Counted as living area: No

Heated: Yes
Finished: Yes
Enclosed: Yes
Contiguous: No
Permitted: Yes
Wet space: No
Addition: No
Conversion: No

2 Floor 1 - Utility



Dimensions: 15'8" x 7'6"
Area: 119 sq. ft
Counted as living area: No

Heated: Yes
Finished: No
Enclosed: Yes
Contiguous: Yes
Permitted: Yes
Wet space: No
Addition: No
Conversion: No

1316 Pershing Avenue, Wheaton, DuPage County,
Illinois, United States, 60189

3 Floor 2 - Room



Dimensions: 9'11" x 6'0"
Area: 59 sq. ft
Counted as living area: No

Heated: Yes
Finished: Yes
Enclosed: Yes
Contiguous: No
Permitted: Yes
Wet space: No
Addition: No
Conversion: No

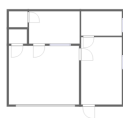
4 Floor 2 - Room



Dimensions: 9'11" x 16'5"
Area: 163 sq. ft
Counted as living area: No

Heated: Yes
Finished: Yes
Enclosed: Yes
Contiguous: No
Permitted: Yes
Wet space: No
Addition: No
Conversion: No

5 Floor 2 - Kitchen



Dimensions: 12'9" x 11'4"
Area: 135 sq. ft
Counted as living area: Yes

Heated: Yes
Finished: Yes
Enclosed: Yes
Contiguous: Yes
Permitted: Yes
Wet space: No
Addition: No
Conversion: No

1316 Pershing Avenue, Wheaton, DuPage County,
Illinois, United States, 60189

6 Floor 2 - Room



Dimensions: 12'5" x 7'11"
Area: 98 sq. ft
Counted as living area: No

Heated: Yes
Finished: Yes
Enclosed: Yes
Contiguous: No
Permitted: Yes
Wet space: No
Addition: No
Conversion: No

7 Floor 2 - Living Room



Dimensions: 15'8" x 19'1"
Area: 244 sq. ft
Counted as living area: Yes

Heated: Yes
Finished: Yes
Enclosed: Yes
Contiguous: Yes
Permitted: Yes
Wet space: No
Addition: No
Conversion: No

8 Floor 2 - Garage

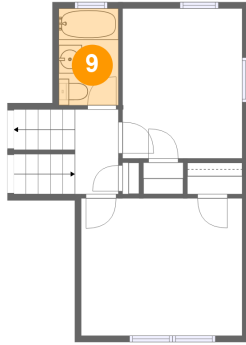


Dimensions: 17'1" x 14'4"
Area: 245 sq. ft
Counted as living area: No

Heated: No
Finished: No
Enclosed: Yes
Contiguous: Yes
Permitted: Yes
Wet space: No
Addition: No
Conversion: No

1316 Pershing Avenue, Wheaton, DuPage County,
Illinois, United States, 60189

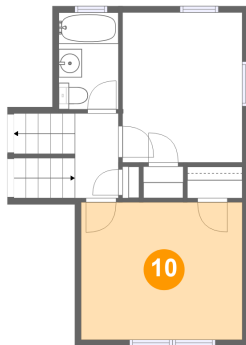
9 Floor 3 - Bath



Dimensions: 4'9" x 7'8"
Area: 37 sq. ft
Counted as living area: Yes

Heated: Yes
Finished: Yes
Enclosed: Yes
Contiguous: Yes
Permitted: Yes
Wet space: Yes
Addition: No
Conversion: No

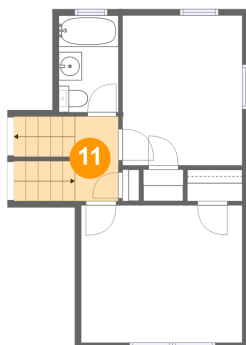
10 Floor 3 - Bedroom



Dimensions: 12'11" x 10'11"
Area: 141 sq. ft
Counted as living area: Yes

Heated: Yes
Finished: Yes
Enclosed: Yes
Contiguous: Yes
Permitted: Yes
Wet space: No
Addition: No
Conversion: No

11 Floor 3 - Hall

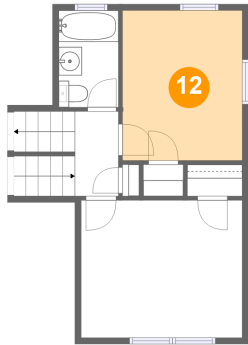


Dimensions: 3'6" x 6'9"
Area: 55 sq. ft
Counted as living area: Yes

Heated: Yes
Finished: Yes
Enclosed: Yes
Contiguous: Yes
Permitted: Yes
Wet space: No
Addition: No
Conversion: No

**1316 Pershing Avenue, Wheaton, DuPage County,
Illinois, United States, 60189**

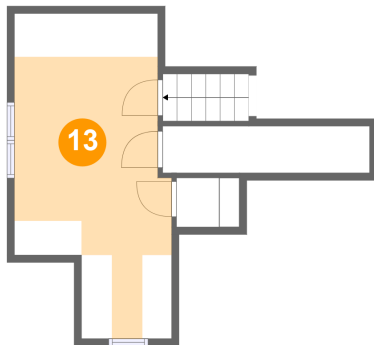
12 Floor 3 - Bedroom



Dimensions: 9'7" x 11'11"
Area: 115 sq. ft
Counted as living area: Yes

Heated: Yes
Finished: Yes
Enclosed: Yes
Contiguous: Yes
Permitted: Yes
Wet space: No
Addition: No
Conversion: No

13 Floor 4 - Primary Bedroom



Dimensions: 10'9" x 22'2"
Area: 139 sq. ft
Counted as living area: Yes

Heated: Yes
Finished: Yes
Enclosed: Yes
Contiguous: Yes
Permitted: Yes
Wet space: No
Addition: No
Conversion: No