


Home report


801 West Cherry Street, Palmyra, Lebanon County,  
Pennsylvania, United States, 17078




Property summary




**0**  
Garages



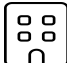
**3**  
Bedrooms




**1**  
Bathrooms




**0**  
Half baths



**3**  
Floors



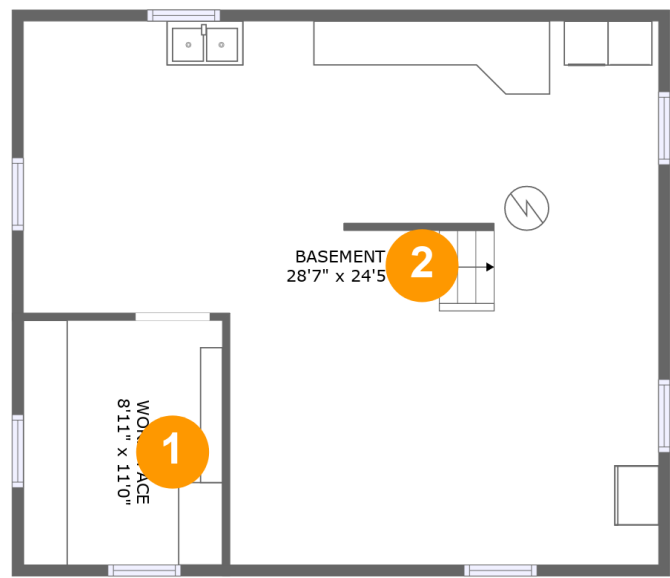
**1,098**  
Gross living  
area sqft



**1,914**  
Total sqft

Home report

801 West Cherry Street, Palmyra, Lebanon County,  
Pennsylvania, United States, 17078



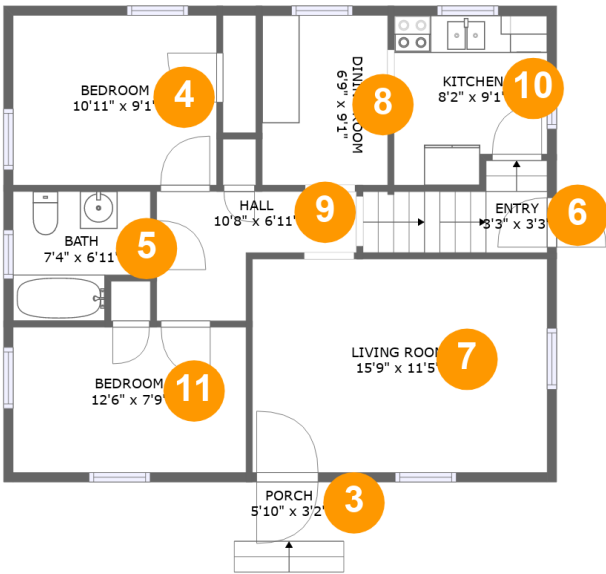
Room dimensions

Floor 1 Total sqft: 753    Living area: 116

#		Dimensions	sqft	Counted as living area
1	Workspace	8'11" x 11'0"	98 sq. ft	Yes
2	Basement	28'7" x 24'5"	593 sq. ft	No

Home report

801 West Cherry Street, Palmyra, Lebanon County,  
Pennsylvania, United States, 17078



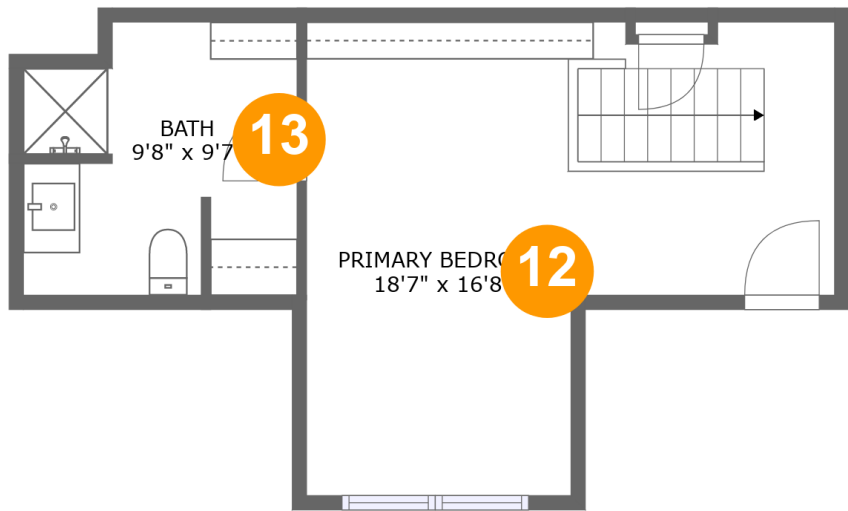
Room dimensions

Floor 2 Total sqft: 780    Living area: 752

#		Dimensions	sqft	Counted as living area
3	Porch	5'10" x 3'2"	28 sq. ft	No
4	Bedroom	10'11" x 9'1"	99 sq. ft	Yes
5	Bath	7'4" x 6'11"	45 sq. ft	Yes
6	Entry	3'3" x 3'3"	38 sq. ft	Yes
7	Living Room	15'9" x 11'5"	180 sq. ft	Yes
8	Dining Room	6'9" x 9'1"	61 sq. ft	Yes
9	Hall	10'8" x 6'11"	52 sq. ft	Yes
10	Kitchen	8'2" x 9'1"	68 sq. ft	Yes
11	Bedroom	12'6" x 7'9"	97 sq. ft	Yes

Home report

801 West Cherry Street, Palmyra, Lebanon County,  
Pennsylvania, United States, 17078

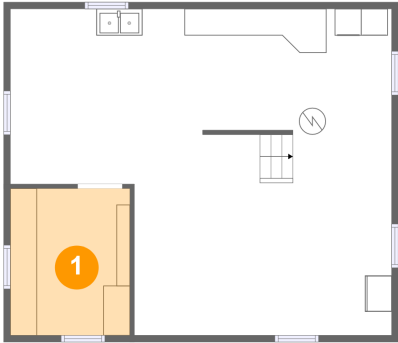


Room dimensions

Floor 3 Total sqft: 381    Living area: 230

#		Dimensions	sqft	Counted as living area
12	Primary Bedroom	18'7" x 16'8"	167 sq. ft	Yes
13	Bath	9'8" x 9'7"	43 sq. ft	Yes

1 Floor 1 - Workspace



Dimensions: 8'11" x 11'0"  
Area: 98 sq. ft  
Counted as living area: Yes

Heated: Yes  
Finished: Yes  
Enclosed: Yes  
Contiguous: Yes  
Permitted: Yes  
Wet space: No  
Addition: No  
Conversion: No

2 Floor 1 - Basement

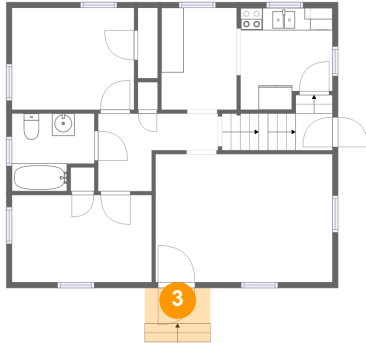


Dimensions: 28'7" x 24'5"  
Area: 593 sq. ft  
Counted as living area: No

Heated: No  
Finished: No  
Enclosed: Yes  
Contiguous: Yes  
Permitted: Yes  
Wet space: No  
Addition: No  
Conversion: No

801 West Cherry Street, Palmyra, Lebanon County,  
Pennsylvania, United States, 17078

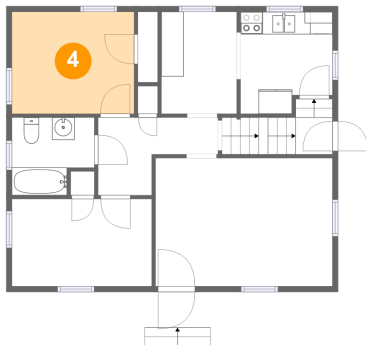
### 3 Floor 2 - Porch



Dimensions: 5'10" x 3'2"  
Area: 28 sq. ft  
Counted as living area: No

Heated: No  
Finished: Yes  
Enclosed: No  
Contiguous: Yes  
Permitted: Yes  
Wet space: No  
Addition: No  
Conversion: No

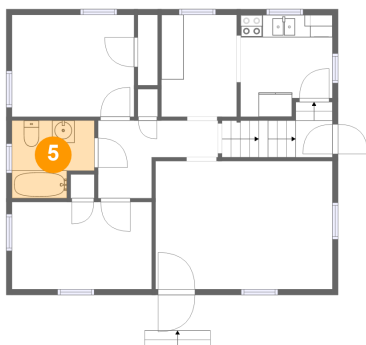
### 4 Floor 2 - Bedroom



Dimensions: 10'11" x 9'1"  
Area: 99 sq. ft  
Counted as living area: Yes

Heated: Yes  
Finished: Yes  
Enclosed: Yes  
Contiguous: Yes  
Permitted: Yes  
Wet space: No  
Addition: No  
Conversion: No

### 5 Floor 2 - Bath

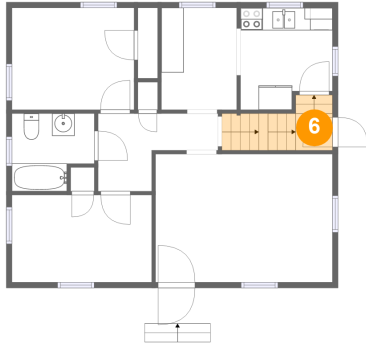


Dimensions: 7'4" x 6'11"  
Area: 45 sq. ft  
Counted as living area: Yes

Heated: Yes  
Finished: Yes  
Enclosed: Yes  
Contiguous: Yes  
Permitted: Yes  
Wet space: Yes  
Addition: No  
Conversion: No

801 West Cherry Street, Palmyra, Lebanon County,  
Pennsylvania, United States, 17078

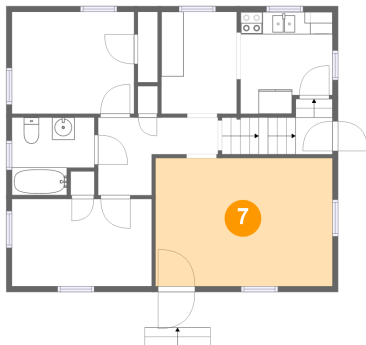
## 6 Floor 2 - Entry



Dimensions: 3'3" x 3'3"  
Area: 38 sq. ft  
Counted as living area: Yes

Heated: Yes  
Finished: Yes  
Enclosed: Yes  
Contiguous: Yes  
Permitted: Yes  
Wet space: No  
Addition: No  
Conversion: No

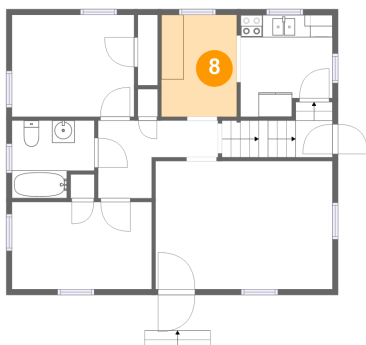
## 7 Floor 2 - Living Room



Dimensions: 15'9" x 11'5"  
Area: 180 sq. ft  
Counted as living area: Yes

Heated: Yes  
Finished: Yes  
Enclosed: Yes  
Contiguous: Yes  
Permitted: Yes  
Wet space: No  
Addition: No  
Conversion: No

## 8 Floor 2 - Dining Room

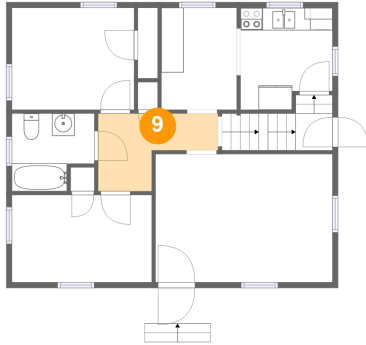


Dimensions: 6'9" x 9'1"  
Area: 61 sq. ft  
Counted as living area: Yes

Heated: Yes  
Finished: Yes  
Enclosed: Yes  
Contiguous: Yes  
Permitted: Yes  
Wet space: No  
Addition: No  
Conversion: No

801 West Cherry Street, Palmyra, Lebanon County,  
Pennsylvania, United States, 17078

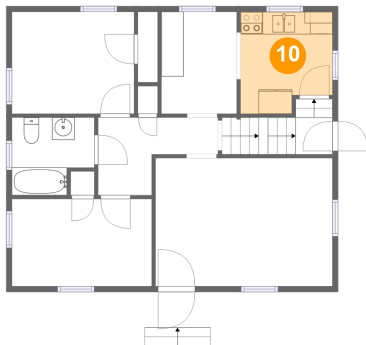
## 9 Floor 2 - Hall



Dimensions: 10'8" x 6'11"  
Area: 52 sq. ft  
Counted as living area: Yes

Heated: Yes  
Finished: Yes  
Enclosed: Yes  
Contiguous: Yes  
Permitted: Yes  
Wet space: No  
Addition: No  
Conversion: No

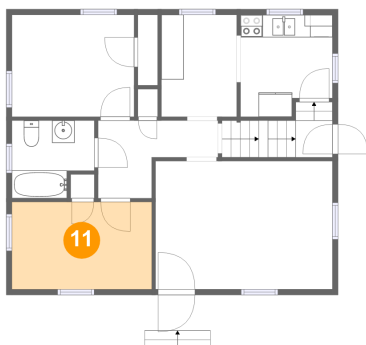
## 10 Floor 2 - Kitchen



Dimensions: 8'2" x 9'1"  
Area: 68 sq. ft  
Counted as living area: Yes

Heated: Yes  
Finished: Yes  
Enclosed: Yes  
Contiguous: Yes  
Permitted: Yes  
Wet space: No  
Addition: No  
Conversion: No

## 11 Floor 2 - Bedroom

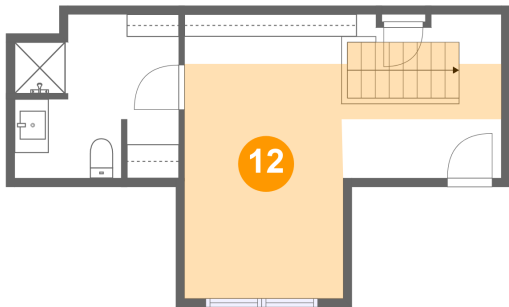


Dimensions: 12'6" x 7'9"  
Area: 97 sq. ft  
Counted as living area: Yes

Heated: Yes  
Finished: Yes  
Enclosed: Yes  
Contiguous: Yes  
Permitted: Yes  
Wet space: No  
Addition: No  
Conversion: No



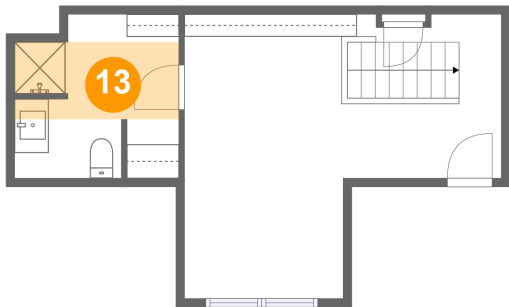
**12** Floor 3 - Primary Bedroom



Dimensions: 18'7" x 16'8"  
Area: 167 sq. ft  
Counted as living area: Yes

Heated: Yes  
Finished: Yes  
Enclosed: Yes  
Contiguous: Yes  
Permitted: Yes  
Wet space: No  
Addition: No  
Conversion: No

**13** Floor 3 - Bath



Dimensions: 9'8" x 9'7"  
Area: 43 sq. ft  
Counted as living area: Yes

Heated: Yes  
Finished: Yes  
Enclosed: Yes  
Contiguous: Yes  
Permitted: Yes  
Wet space: Yes  
Addition: No  
Conversion: No