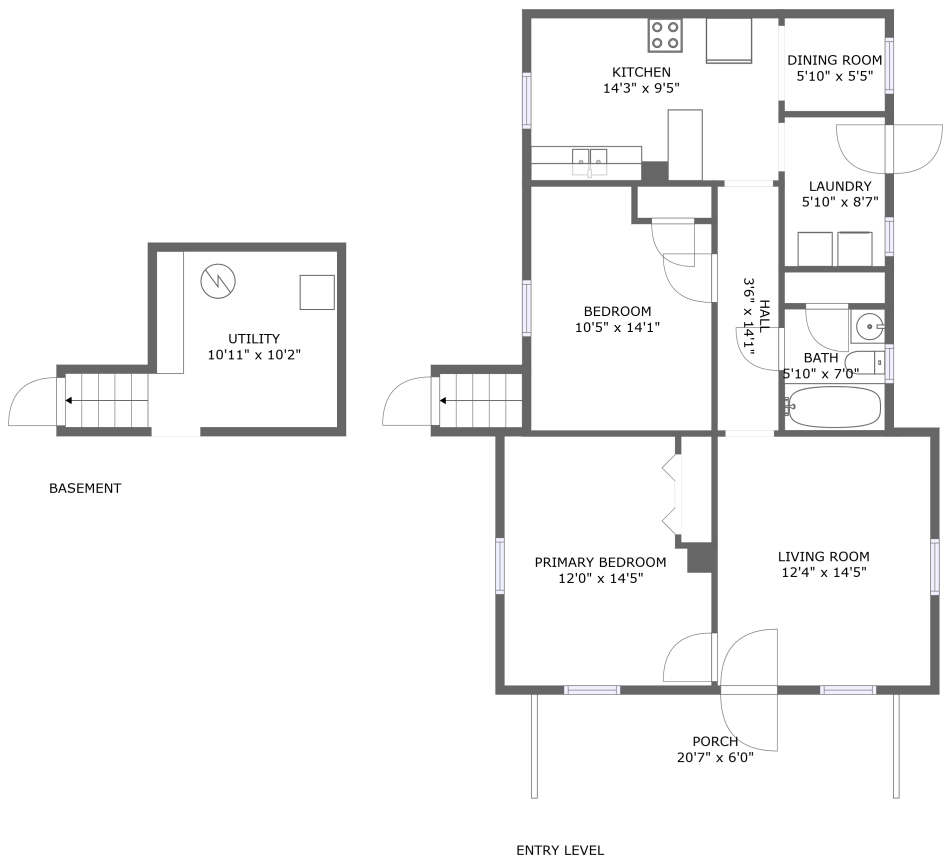


Home report

615 Janette Avenue Southwest, Old Southwest, Roanoke,
Roanoke city, Virginia, United States, 24016




Total Area: 912 sq. ft

Floor 1: 0 sq. ft, Floor 2: 912 sq. ft

Excluded: Utility 149 sq. ft, Undefined 21 sq. ft, Outdoor Porch 123 sq. ft

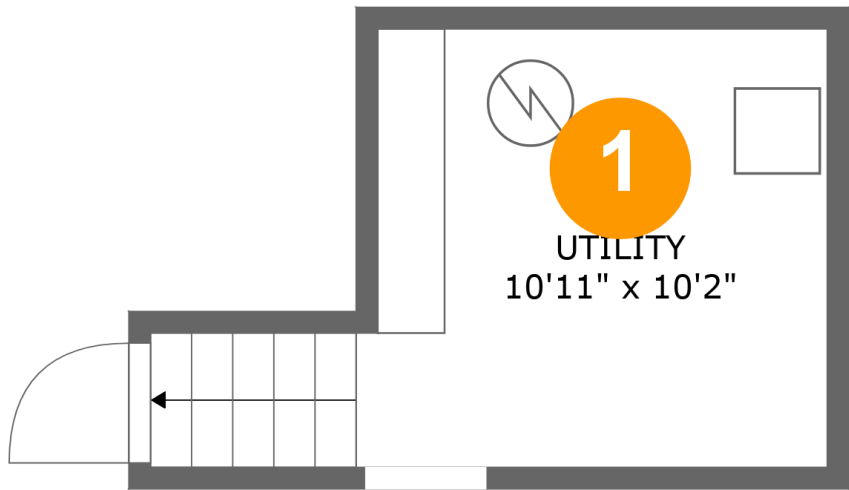
Property summary

 **2** Floors

 **2** Bedrooms

 **1** Bathrooms

615 Janette Avenue Southwest, Old Southwest, Roanoke,
Roanoke city, Virginia, United States, 24016



Room dimensions

Floor 1 Total:0sqft Excluded: 149sqft

#		Max Dimensions	sqft	Included
1	Utility	10'11" x 10'2"	122 sq. ft	No

Home report

615 Janette Avenue Southwest, Old Southwest, Roanoke,
Roanoke city, Virginia, United States, 24016



Room dimensions

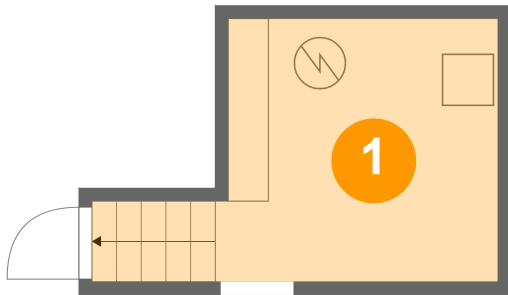
Floor 2 Total:912sqft Excluded: 144sqft

#		Max Dimensions	sqft	Included
2	Laundry	5'10" x 8'7"	50 sq. ft	Yes
3	Bath	5'10" x 7'0"	41 sq. ft	Yes
4	Porch	20'7" x 6'0"	123 sq. ft	No
5	Bedroom	10'5" x 14'1"	137 sq. ft	Yes
6	Kitchen	14'3" x 9'5"	134 sq. ft	Yes
7	Living Room	12'4" x 14'5"	177 sq. ft	Yes
8	Primary Bedroom	12'0" x 14'5"	159 sq. ft	Yes
9	Hall	3'6" x 14'1"	50 sq. ft	Yes
10	Dining Room	5'10" x 5'5"	31 sq. ft	Yes

Home report

615 Janette Avenue Southwest, Old Southwest, Roanoke,
Roanoke city, Virginia, United States, 24016

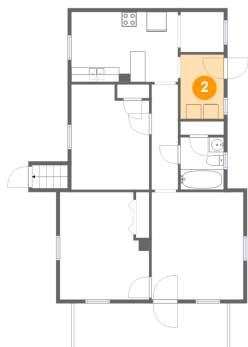
1 Floor 1 - Utility



Max Dimensions: 10'11" x 10'2"
Calculated Area: 122 sq. ft
Included: No

Heated: Yes
Finished: No
Enclosed: Yes
Contiguous: Yes
Permitted: Yes
Wet space: No
Addition: No
Conversion: No

2 Floor 2 - Laundry

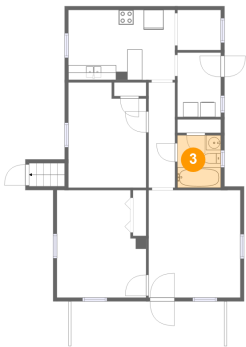


Max Dimensions: 5'10" x 8'7"
Calculated Area: 50 sq. ft
Included: Yes

Heated: Yes
Finished: Yes
Enclosed: Yes
Contiguous: Yes
Permitted: Yes
Wet space: No
Addition: No
Conversion: No

615 Janette Avenue Southwest, Old Southwest, Roanoke,
Roanoke city, Virginia, United States, 24016

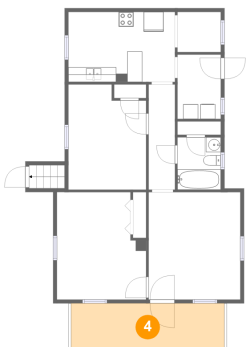
3 Floor 2 - Bath



Max Dimensions: 5'10" x 7'0"
Calculated Area: 41 sq. ft
Included: Yes

Heated: Yes
Finished: Yes
Enclosed: Yes
Contiguous: Yes
Permitted: Yes
Wet space: Yes
Addition: No
Conversion: No

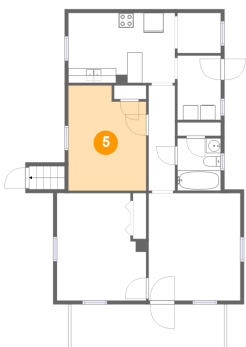
4 Floor 2 - Porch



Max Dimensions: 20'7" x 6'0"
Calculated Area: 123 sq. ft
Included: No

Heated: No
Finished: Yes
Enclosed: No
Contiguous: Yes
Permitted: Yes
Wet space: No
Addition: No
Conversion: No

5 Floor 2 - Bedroom



Max Dimensions: 10'5" x 14'1"
Calculated Area: 137 sq. ft
Included: Yes

Heated: Yes
Finished: Yes
Enclosed: Yes
Contiguous: Yes
Permitted: Yes
Wet space: No
Addition: No
Conversion: No

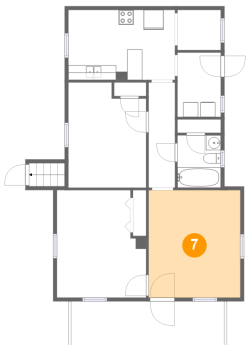
6 Floor 2 - Kitchen



Max Dimensions: 14'3" x 9'5"
Calculated Area: 134 sq. ft
Included: Yes

Heated: Yes
Finished: Yes
Enclosed: Yes
Contiguous: Yes
Permitted: Yes
Wet space: No
Addition: No
Conversion: No

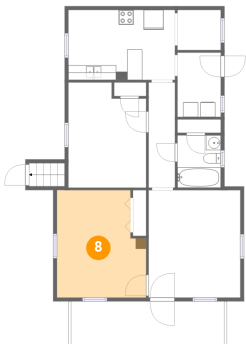
7 Floor 2 - Living Room



Max Dimensions: 12'4" x 14'5"
Calculated Area: 177 sq. ft
Included: Yes

Heated: Yes
Finished: Yes
Enclosed: Yes
Contiguous: Yes
Permitted: Yes
Wet space: No
Addition: No
Conversion: No

8 Floor 2 - Primary Bedroom

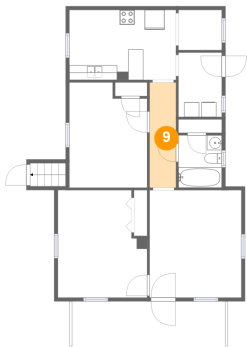


Max Dimensions: 12'0" x 14'5"
Calculated Area: 159 sq. ft
Included: Yes

Heated: Yes
Finished: Yes
Enclosed: Yes
Contiguous: Yes
Permitted: Yes
Wet space: No
Addition: No
Conversion: No

615 Janette Avenue Southwest, Old Southwest, Roanoke,
Roanoke city, Virginia, United States, 24016

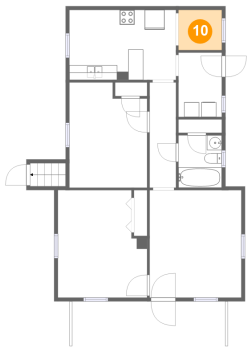
9 Floor 2 - Hall



Max Dimensions: 3'6" x 14'1"
Calculated Area: 50 sq. ft
Included: Yes

Heated: Yes
Finished: Yes
Enclosed: Yes
Contiguous: Yes
Permitted: Yes
Wet space: No
Addition: No
Conversion: No

10 Floor 2 - Dining Room



Max Dimensions: 5'10" x 5'5"
Calculated Area: 31 sq. ft
Included: Yes

Heated: Yes
Finished: Yes
Enclosed: Yes
Contiguous: Yes
Permitted: Yes
Wet space: No
Addition: No
Conversion: No