

2521 Martinsburg Road, Berkeley Springs, Morgan County, West Virginia, United States, 25411

Gross Living Area: 1399 sq. ft



Space	Area (sq. ft)	Calculation <small>Coordinate Polygon Area Algorithm using inches</small>
FLOOR 1 (Living area)	921	$-((433.9 + 433.9) * (105.9 - 529.3) + (433.9 + 88.4) * (529.3 - 529.3) + (88.4 + 88.4) * (529.3 - 242.5) + (88.4 + 188) * (242.5 - 242.5) + (188 + 188) * (242.5 - 105.9) + (188 + 433.9) * (105.9 - 105.9)) * 0.5 + 0.00694$
PORCH (Non-living area)	189	$-((427.9 + 427.9) * (529.3 - 611.1) + (427.9 + 94.4) * (611.1 - 611.1) + (94.4 + 94.4) * (611.1 - 529.3) + (94.4 + 427.9) * (529.3 - 529.3)) * 0.5 + 0.00694$
DECK	339	$-((508.1 + 508.1) * (-34.5 - 210.3) + (508.1 + 433.9) * (210.3 - 210.3) + (433.9 + 433.9) * (210.3 -$

2521 Martinsburg Road, Berkeley Springs, Morgan County, West Virginia, United States, 25411

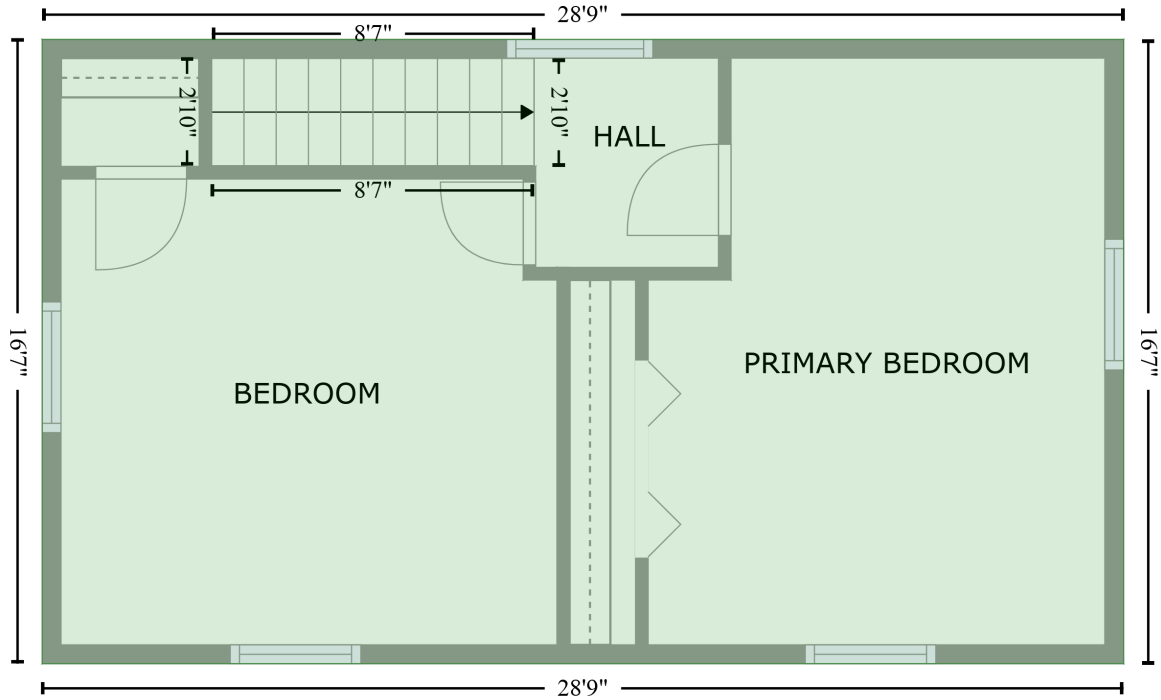
Gross Living Area: 1399 sq. ft

Space	Area (sq. ft)	Calculation <small>Coordinate Polygon Area Algorithm using inches</small>
(Non-living area)		$\frac{105.9 + (433.9 + 216) * (105.9 - 105.9) + (216 + 216) * (105.9 - -34.5) + (216 + 508.1) * (-34.5 - -34.5)}{2} * 0.5 * 0.00694$

2521 Martinsburg Road, Berkeley Springs, Morgan County, West Virginia, United States, 25411

Gross Living Area: 1399 sq. ft

FLOOR 2
[AREA: 478]



Space	Area (sq. ft)	Calculation <small>Coordinate Polygon Area Algorithm using inches</small>
FLOOR 2 (Living area)	478	$-((433.9 + 433.9) * (330 - 529.3) + (433.9 + 88.4) * (529.3 - 529.3) + (88.4 + 88.4) * (529.3 - 330) + (88.4 + 433.9) * (330 - 330)) * 0.5 * 0.00694$