

358 County Road 250, Hytop, Scottsboro, Jackson County, Alabama, United States, 35768

Gross Living Area: 3037 sq. ft

FLOOR 1
[AREA: 1635]

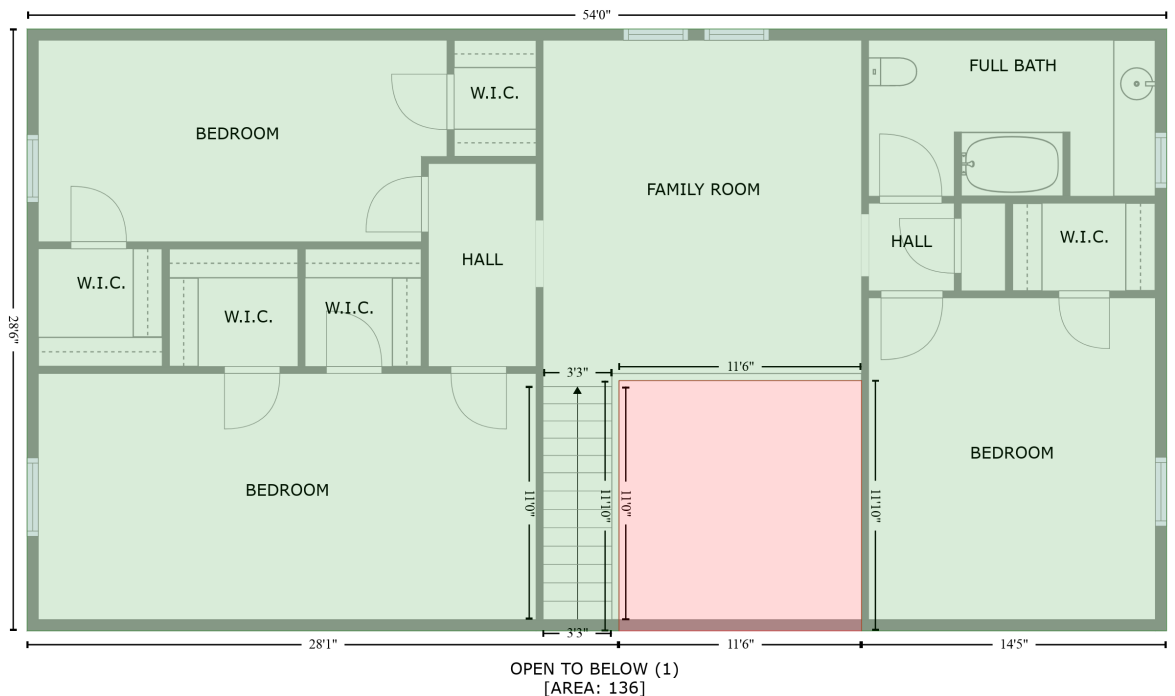


Space	Area (sq. ft)	Calculation <small>Coordinate Polygon Area Algorithm using inches</small>
FLOOR 1 (Living area)	1635	$-((0.7 + 648.6) * (5.8 - 5.8) + (648.6 + 648.6) * (5.8 - 347.7) + (648.6 + 481.6) * (347.7 - 347.7) + (481.6 + 481.6) * (347.7 - 419.4) + (481.6 + 288.1) * (419.4 - 419.4) + (288.1 + 288.1) * (419.4 - 347.7) + (288.1 + 0.7) * (347.7 - 347.7) + (0.7 + 0.7) * (347.7 - 5.8)) * 0.5 * 0.00694$
DECK (Non-living area)	76	$-((717.3 + 717.3) * (84.9 - 243.6) + (717.3 + 648.6) * (243.6 - 243.6) + (648.6 + 648.6) * (243.6 - 84.9) + (648.6 + 717.3) * (84.9 - 84.9)) * 0.5 * 0.00694$

358 County Road 250, Hytop, Scottsboro, Jackson County, Alabama, United States, 35768

Gross Living Area: 3037 sq. ft

FLOOR 2
[AREA: 1402]



Space	Area (sq. ft)	Calculation
FLOOR 2 (Living area)	1402	Coordinate Polygon Area Algorithm using inches $-((0.7 + 648.6) * (5.8 - 5.8) + (648.6 + 648.6) * (5.8 - 347.7) + (648.6 + 475.2) * (347.7 - 347.7) + (475.2 + 475.2) * (347.7 - 205.5) + (475.2 + 337.2) * (205.5 - 205.5) + (337.2 + 337.2) * (205.5 - 347.7) + (337.2 + 0.7) * (347.7 - 347.7) + (0.7 + 0.7) * (347.7 - 5.8)) * 0.5 * 0.00694$
OPEN TO BELOW (Non-living area)	136	$-((475.2 + 475.2) * (205.5 - 347.7) + (475.2 + 337.2) * (347.7 - 347.7) + (337.2 + 337.2) * (347.7 - 205.5) + (337.2 + 475.2) * (205.5 - 205.5)) * 0.5 * 0.00694$