



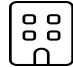




95 Shoreline Circle, Penhook, Franklin County, Virginia, United States, 24137

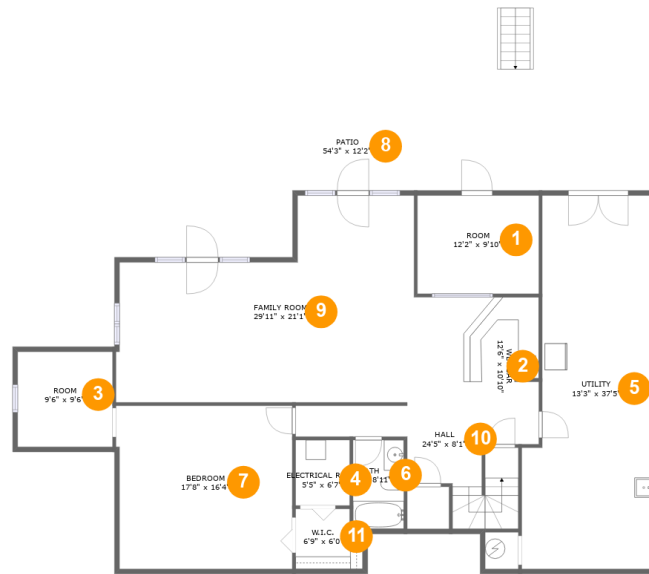


Property Summary

 **1** garages  **4** bedrooms  **3** bathrooms  **0** half baths

 **2** floors  **3,458** Gross Living Area sqft  **6,235** total sqft

95 Shoreline Circle, Penhook, Franklin County, Virginia, United States, 24137



Room Dimensions

Floor 1

Total sqft: 2773

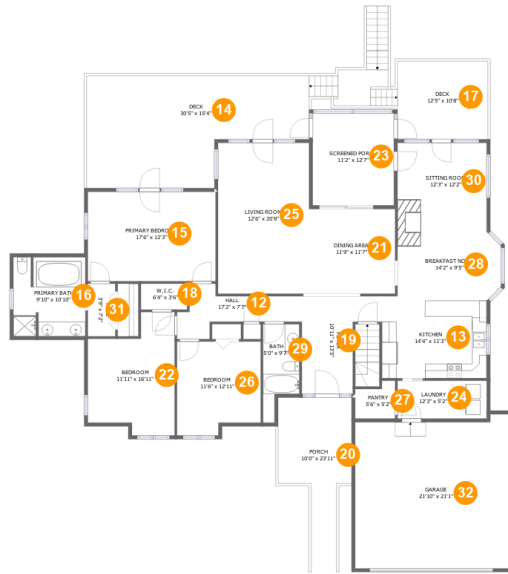
Living area: 1381

#	Room name	Dimensions	Area (sqft)	Counted as Living Area
1	Room	12'2" x 9'10"	120 sq. ft	No
2	Wet Bar	12'6" x 10'10"	135 sq. ft	Yes
3	Room	9'6" x 9'6"	91 sq. ft	Yes
4	Electrical Room	5'5" x 6'7"	36 sq. ft	No
5	Utility	13'3" x 37'5"	445 sq. ft	No
6	Bath	5'1" x 8'11"	45 sq. ft	Yes
7	Bedroom	17'8" x 16'4"	285 sq. ft	Yes
8	Patio	54'3" x 12'2"	732 sq. ft	No
9	Family Room	29'11" x 21'1"	494 sq. ft	Yes
10	Hall	24'5" x 8'1"	156 sq. ft	Yes
11	W.i.c.	6'9" x 6'0"	37 sq. ft	Yes

Scan captured on Wed, 19 Jun 2024 17:33:26 GMT

Information is calculated by CubiCasa technology; deemed highly reliable but not guaranteed.

95 Shoreline Circle, Penhook, Franklin County, Virginia, United States, 24137



Room Dimensions

Floor 2

Total sqft: 3462

Living area: 2077

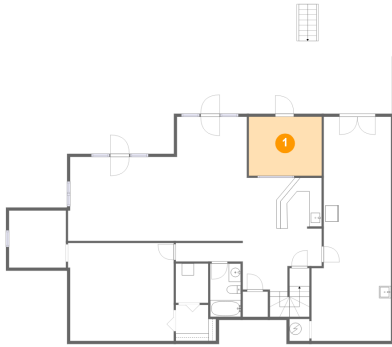
#	Room name	Dimensions	Area (sqft)	Counted as Living Area
12	Hall	17'2" x 7'7"	73 sq. ft	Yes
13	Kitchen	14'4" x 11'3"	154 sq. ft	Yes
14	Deck	30'5" x 15'4"	468 sq. ft	No
15	Primary Bedroom	17'6" x 12'3"	215 sq. ft	Yes
16	Primary Bath	9'10" x 10'10"	105 sq. ft	Yes
17	Deck	12'5" x 10'8"	132 sq. ft	No
18	W.i.c.	6'4" x 3'6"	22 sq. ft	Yes
19	Foyer	10'11" x 13'5"	107 sq. ft	Yes
20	Porch	10'0" x 23'11"	160 sq. ft	No
21	Dining Area	11'9" x 11'7"	137 sq. ft	Yes
22	Bedroom	11'11" x 16'11"	164 sq. ft	Yes

**95 Shoreline Circle, Penhook, Franklin County,
Virginia, United States, 24137**

#	Room name	Dimensions	Area (sqft)	Counted as Living Area
23	Screened Porch	11'2" x 12'7"	140 sq. ft	No
24	Laundry	12'3" x 5'2"	63 sq. ft	Yes
25	Living Room	12'6" x 20'8"	258 sq. ft	Yes
26	Bedroom	11'6" x 12'11"	137 sq. ft	Yes
27	Pantry	5'6" x 5'2"	24 sq. ft	Yes
28	Breakfast Nook	14'2" x 9'5"	130 sq. ft	Yes
29	Bath	5'0" x 9'7"	54 sq. ft	Yes
30	Sitting Room	12'3" x 12'2"	149 sq. ft	Yes
31	Hall	3'9" x 7'2"	27 sq. ft	Yes
32	Garage	21'10" x 21'1"	441 sq. ft	No

95 Shoreline Circle, Penhook, Franklin County, Virginia, United States, 24137

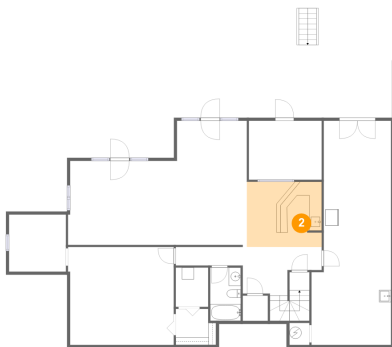
1 Floor 1 - Room



Dimensions: 12'2" x 9'10"
Area: 120 sq. ft
Counted as Living Area: No

Heated: Yes
Finished: No
Enclosed: Yes
Contiguous: Yes
Permitted: Yes
Wet Space: No
Addition: No
Conversion: No

2 Floor 1 - Wet Bar

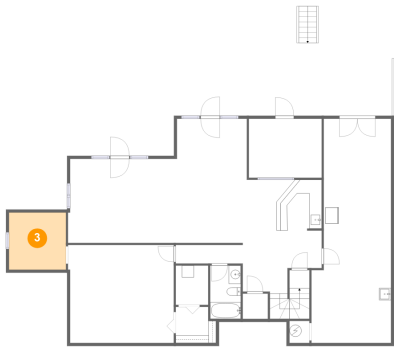


Dimensions: 12'6" x 10'10"
Area: 135 sq. ft
Counted as Living Area:
Yes

Heated: Yes
Finished: Yes
Enclosed: Yes
Contiguous:
Yes
Permitted: Yes
Wet Space: No
Addition: No
Conversion: No

95 Shoreline Circle, Penhook, Franklin County, Virginia, United States, 24137

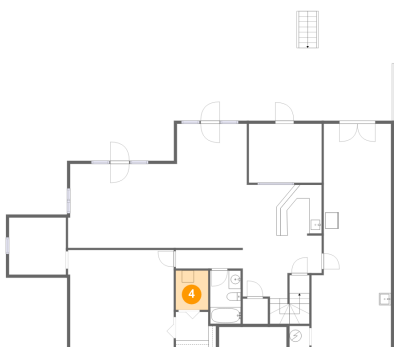
3 Floor 1 - Room



Dimensions: 9'6" x 9'6"
Area: 91 sq. ft
Counted as Living Area:
Yes

Heated: Yes
Finished: Yes
Enclosed: Yes
Contiguous:
Yes
Permitted: Yes
Wet Space: No
Addition: No
Conversion: No

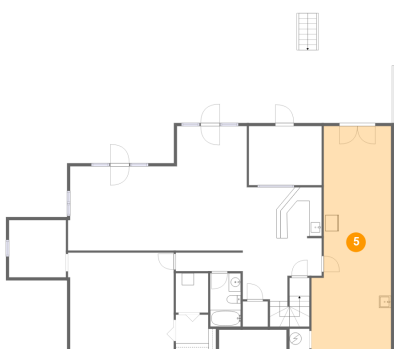
4 Floor 1 - Electrical Room



Dimensions: 5'5" x 6'7"
Area: 36 sq. ft
Counted as Living Area: No

Heated: No
Finished: No
Enclosed: Yes
Contiguous: Yes
Permitted: Yes
Wet Space: No
Addition: No
Conversion: No

5 Floor 1 - Utility

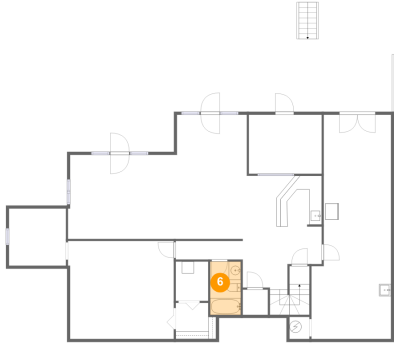


Dimensions: 13'3" x 37'5"
Area: 445 sq. ft
Counted as Living Area: No

Heated: Yes
Finished: No
Enclosed: Yes
Contiguous: Yes
Permitted: Yes
Wet Space: No
Addition: No
Conversion: No

95 Shoreline Circle, Penhook, Franklin County, Virginia, United States, 24137

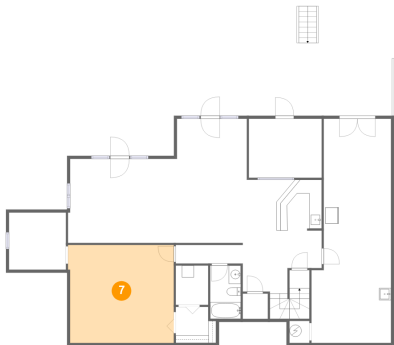
6 Floor 1 - Bath



Dimensions: 5'1" x 8'11"
Area: 45 sq. ft
Counted as Living Area:
Yes

Heated: Yes
Finished: Yes
Enclosed: Yes
Contiguous:
Yes
Permitted: Yes
Wet Space: Yes
Addition: No
Conversion: No

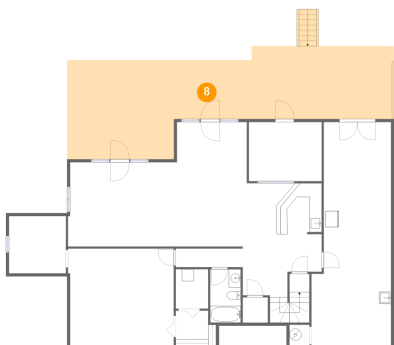
7 Floor 1 - Bedroom



Dimensions: 17'8" x 16'4"
Area: 285 sq. ft
Counted as Living Area:
Yes

Heated: Yes
Finished: Yes
Enclosed: Yes
Contiguous:
Yes
Permitted: Yes
Wet Space: No
Addition: No
Conversion: No

8 Floor 1 - Patio

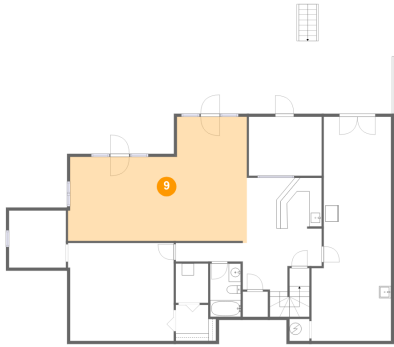


Dimensions: 54'3" x 12'2"
Area: 732 sq. ft
Counted as Living Area: No

Heated: No
Finished: Yes
Enclosed: No
Contiguous: Yes
Permitted: Yes
Wet Space: No
Addition: No
Conversion: No

95 Shoreline Circle, Penhook, Franklin County, Virginia, United States, 24137

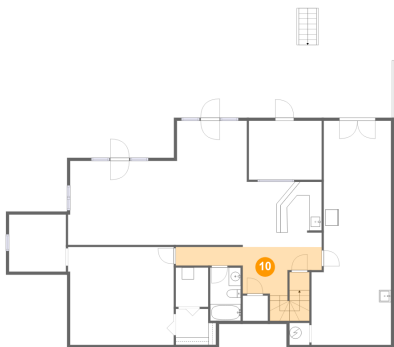
9 Floor 1 - Family Room



Dimensions: 29'11" x 21'1"
Area: 494 sq. ft
Counted as Living Area:
Yes

Heated: Yes
Finished: Yes
Enclosed: Yes
Contiguous:
Yes
Permitted: Yes
Wet Space: No
Addition: No
Conversion: No

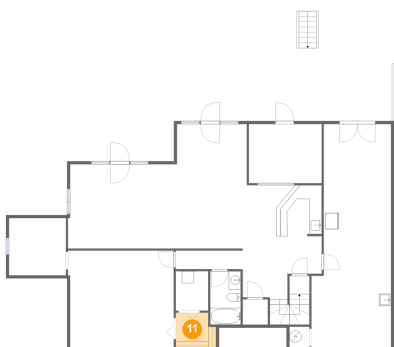
10 Floor 1 - Hall



Dimensions: 24'5" x 8'1"
Area: 156 sq. ft
Counted as Living Area:
Yes

Heated: Yes
Finished: Yes
Enclosed: Yes
Contiguous:
Yes
Permitted: Yes
Wet Space: No
Addition: No
Conversion: No

11 Floor 1 - W.i.c.



Dimensions: 6'9" x 6'0"
Area: 37 sq. ft
Counted as Living Area:
Yes

Heated: Yes
Finished: Yes
Enclosed: Yes
Contiguous:
Yes
Permitted: Yes
Wet Space: No
Addition: No
Conversion: No

95 Shoreline Circle, Penhook, Franklin County, Virginia, United States, 24137

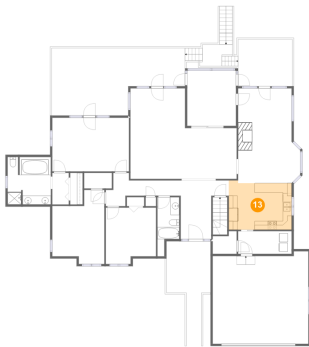
12 Floor 2 - Hall



Dimensions: 17'2" x 7'7"
Area: 73 sq. ft
Counted as Living Area:
Yes

Heated: Yes
Finished: Yes
Enclosed: Yes
Contiguous:
Yes
Permitted: Yes
Wet Space: No
Addition: No
Conversion: No

13 Floor 2 - Kitchen



Dimensions: 14'4" x 11'3"
Area: 154 sq. ft
Counted as Living Area:
Yes

Heated: Yes
Finished: Yes
Enclosed: Yes
Contiguous:
Yes
Permitted: Yes
Wet Space: No
Addition: No
Conversion: No

14 Floor 2 - Deck



Dimensions: 30'5" x 15'4"
Area: 468 sq. ft
Counted as Living Area: No

Heated: No
Finished: Yes
Enclosed: No
Contiguous: Yes
Permitted: Yes
Wet Space: No
Addition: No
Conversion: No

95 Shoreline Circle, Penhook, Franklin County, Virginia, United States, 24137

15 Floor 2 - Primary Bedroom



Dimensions: 17'6" x 12'3"
Area: 215 sq. ft
Counted as Living Area:
Yes

Heated: Yes
Finished: Yes
Enclosed: Yes
Contiguous:
Yes
Permitted: Yes
Wet Space: No
Addition: No
Conversion: No

16 Floor 2 - Primary Bath



Dimensions: 9'10" x 10'10"
Area: 105 sq. ft
Counted as Living Area:
Yes

Heated: Yes
Finished: Yes
Enclosed: Yes
Contiguous:
Yes
Permitted: Yes
Wet Space: Yes
Addition: No
Conversion: No

17 Floor 2 - Deck



Dimensions: 12'5" x 10'8"
Area: 132 sq. ft
Counted as Living Area: No

Heated: No
Finished: Yes
Enclosed: No
Contiguous: Yes
Permitted: Yes
Wet Space: No
Addition: No
Conversion: No

95 Shoreline Circle, Penhook, Franklin County, Virginia, United States, 24137

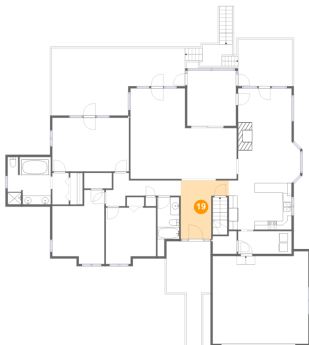
18 Floor 2 - W.i.c.



Dimensions: 6'4" x 3'6"
Area: 22 sq. ft
Counted as Living Area:
Yes

Heated: Yes
Finished: Yes
Enclosed: Yes
Contiguous:
Yes
Permitted: Yes
Wet Space: No
Addition: No
Conversion: No

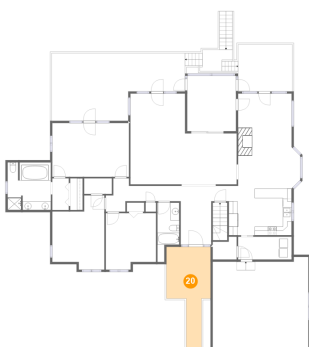
19 Floor 2 - Foyer



Dimensions: 10'11" x 13'5"
Area: 107 sq. ft
Counted as Living Area:
Yes

Heated: Yes
Finished: Yes
Enclosed: Yes
Contiguous:
Yes
Permitted: Yes
Wet Space: No
Addition: No
Conversion: No

20 Floor 2 - Porch

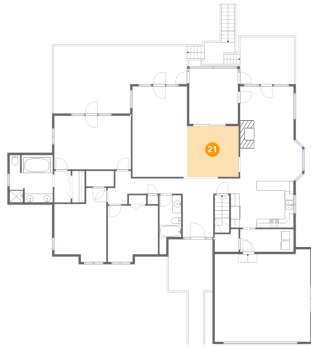


Dimensions: 10'0" x 23'11"
Area: 160 sq. ft
Counted as Living Area: No

Heated: No
Finished: Yes
Enclosed: No
Contiguous: Yes
Permitted: Yes
Wet Space: No
Addition: No
Conversion: No

95 Shoreline Circle, Penhook, Franklin County, Virginia, United States, 24137

21 Floor 2 - Dining Area



Dimensions: 11'9" x 11'7"
Area: 137 sq. ft
Counted as Living Area:
Yes

Heated: Yes
Finished: Yes
Enclosed: Yes
Contiguous:
Yes
Permitted: Yes
Wet Space: No
Addition: No
Conversion: No

22 Floor 2 - Bedroom



Dimensions: 11'11" x 16'11"
Area: 164 sq. ft
Counted as Living Area:
Yes

Heated: Yes
Finished: Yes
Enclosed: Yes
Contiguous:
Yes
Permitted: Yes
Wet Space: No
Addition: No
Conversion: No

23 Floor 2 - Screened Porch



Dimensions: 11'2" x 12'7"
Area: 140 sq. ft
Counted as Living Area: No

Heated: No
Finished: Yes
Enclosed: No
Contiguous: Yes
Permitted: Yes
Wet Space: No
Addition: No
Conversion: No

95 Shoreline Circle, Penhook, Franklin County, Virginia, United States, 24137

24 Floor 2 - Laundry



Dimensions: 12'3" x 5'2"
Area: 63 sq. ft
Counted as Living Area:
Yes

Heated: Yes
Finished: Yes
Enclosed: Yes
Contiguous:
Yes
Permitted: Yes
Wet Space: No
Addition: No
Conversion: No

25 Floor 2 - Living Room



Dimensions: 12'6" x 20'8"
Area: 258 sq. ft
Counted as Living Area:
Yes

Heated: Yes
Finished: Yes
Enclosed: Yes
Contiguous:
Yes
Permitted: Yes
Wet Space: No
Addition: No
Conversion: No

26 Floor 2 - Bedroom



Dimensions: 11'6" x 12'11"
Area: 137 sq. ft
Counted as Living Area:
Yes

Heated: Yes
Finished: Yes
Enclosed: Yes
Contiguous:
Yes
Permitted: Yes
Wet Space: No
Addition: No
Conversion: No

95 Shoreline Circle, Penhook, Franklin County, Virginia, United States, 24137

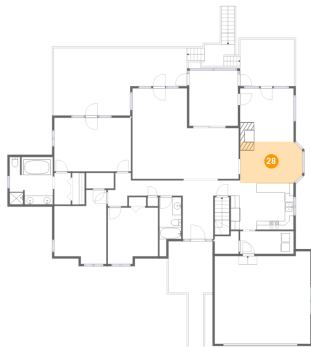
27 Floor 2 - Pantry



Dimensions: 5'6" x 5'2"
Area: 24 sq. ft
Counted as Living Area:
Yes

Heated: Yes
Finished: Yes
Enclosed: Yes
Contiguous:
Yes
Permitted: Yes
Wet Space: No
Addition: No
Conversion: No

28 Floor 2 - Breakfast Nook



Dimensions: 14'2" x 9'5"
Area: 130 sq. ft
Counted as Living Area:
Yes

Heated: Yes
Finished: Yes
Enclosed: Yes
Contiguous:
Yes
Permitted: Yes
Wet Space: No
Addition: No
Conversion: No

29 Floor 2 - Bath



Dimensions: 5'0" x 9'7"
Area: 54 sq. ft
Counted as Living Area:
Yes

Heated: Yes
Finished: Yes
Enclosed: Yes
Contiguous:
Yes
Permitted: Yes
Wet Space: Yes
Addition: No
Conversion: No

95 Shoreline Circle, Penhook, Franklin County, Virginia, United States, 24137

30 Floor 2 - Sitting Room



Dimensions: 12'3" x 12'2"
Area: 149 sq. ft
Counted as Living Area:
Yes

Heated: Yes
Finished: Yes
Enclosed: Yes
Contiguous:
Yes
Permitted: Yes
Wet Space: No
Addition: No
Conversion: No

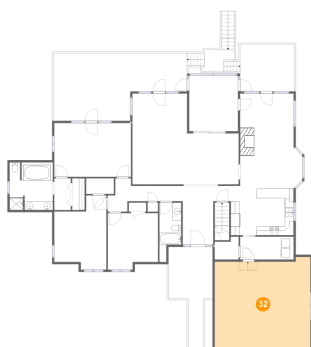
31 Floor 2 - Hall



Dimensions: 3'9" x 7'2"
Area: 27 sq. ft
Counted as Living Area:
Yes

Heated: Yes
Finished: Yes
Enclosed: Yes
Contiguous:
Yes
Permitted: Yes
Wet Space: No
Addition: No
Conversion: No

32 Floor 2 - Garage



Dimensions: 21'10" x 21'1"
Area: 441 sq. ft
Counted as Living Area: No

Heated: No
Finished: No
Enclosed: Yes
Contiguous: Yes
Permitted: Yes
Wet Space: No
Addition: No
Conversion: No