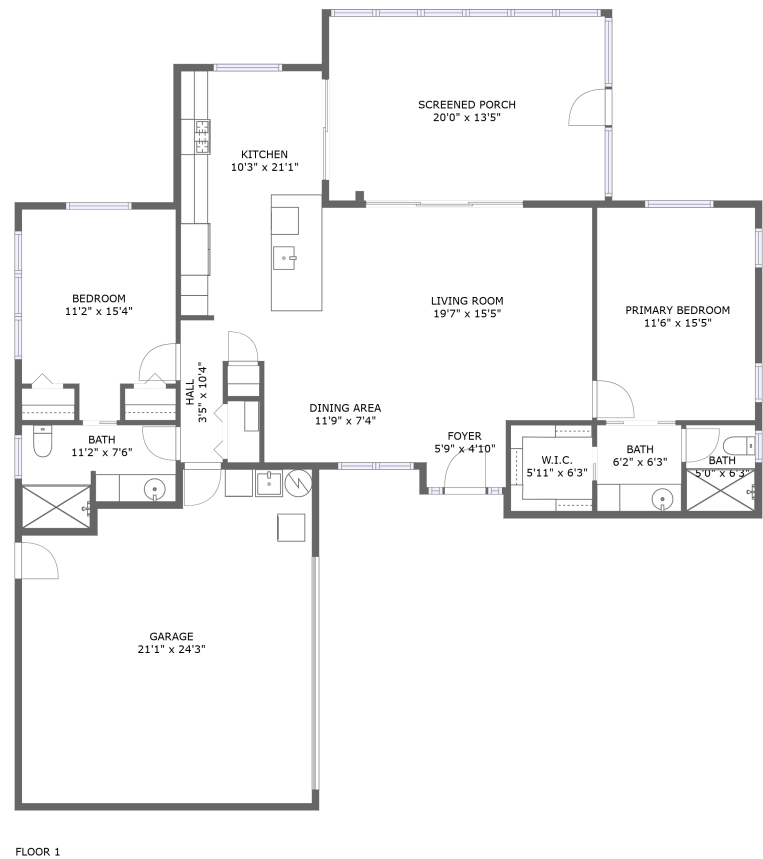


Home report

1468 Fairway Drive, Fairway Estate, Dunedin, Pinellas County, Florida, United States, 34698




Total Area: 1200 sq. ft


Floor 1: 1200 sq. ft

Excluded: Screened porch 268 sq. ft, Garage 467 sq. ft, Walls: 142 sq. ft

Property summary

 1 Floors

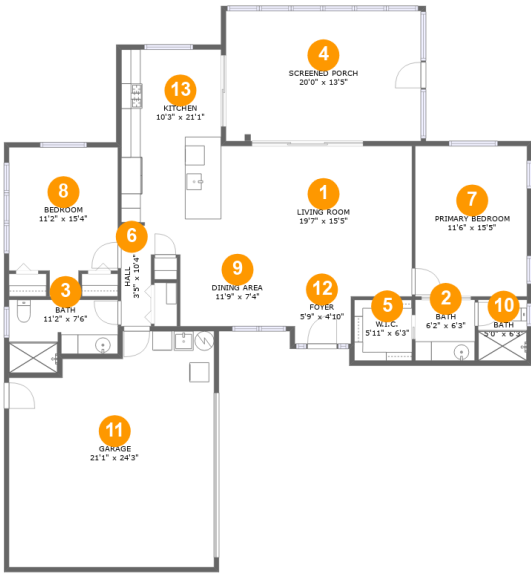
 2 Bedrooms

 2 Bathrooms

 1 Garages

Home report

1468 Fairway Drive, Fairway Estate, Dunedin, Pinellas County, Florida, United States, 34698



Room dimensions

Floor 1 Total:1200sqft Excluded: 735sqft

#		Max Dimensions	sqft	Included
1	Living Room	19'7" x 15'5"	270 sq. ft	Yes
2	Bath	6'2" x 6'3"	38 sq. ft	Yes
3	Bath	11'2" x 7'6"	71 sq. ft	Yes
4	Screened Porch	20'0" x 13'5"	268 sq. ft	No
5	W.I.C.	5'11" x 6'3"	37 sq. ft	Yes
6	Hall	3'5" x 10'4"	33 sq. ft	Yes
7	Primary Bedroom	11'6" x 15'5"	177 sq. ft	Yes
8	Bedroom	11'2" x 15'4"	149 sq. ft	Yes
9	Dining Area	11'9" x 7'4"	87 sq. ft	Yes
10	Bath	5'0" x 6'3"	31 sq. ft	Yes
11	Garage	21'1" x 24'3"	467 sq. ft	No

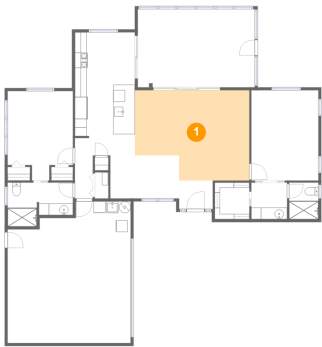
Home report

1468 Fairway Drive, Fairway Estate, Dunedin, Pinellas County,
Florida, United States, 34698

#		Max Dimensions	sqft	Included
12	Foyer	5'9" x 4'10"	28 sq. ft	Yes
13	Kitchen	10'3" x 21'1"	205 sq. ft	Yes

1468 Fairway Drive, Fairway Estate, Dunedin, Pinellas County,
Florida, United States, 34698

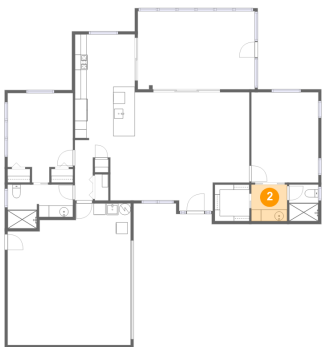
1 Floor 1 - Living Room



Max Dimensions: 19'7" x 15'5"
Calculated Area: 270 sq. ft
Included: Yes

Heated: Yes
Finished: Yes
Enclosed: Yes
Contiguous: Yes
Permitted: Yes
Wet space: No
Addition: No
Conversion: No

2 Floor 1 - Bath



Max Dimensions: 6'2" x 6'3"
Calculated Area: 38 sq. ft
Included: Yes

Heated: Yes
Finished: Yes
Enclosed: Yes
Contiguous: Yes
Permitted: Yes
Wet space: Yes
Addition: No
Conversion: No

1468 Fairway Drive, Fairway Estate, Dunedin, Pinellas County,
Florida, United States, 34698

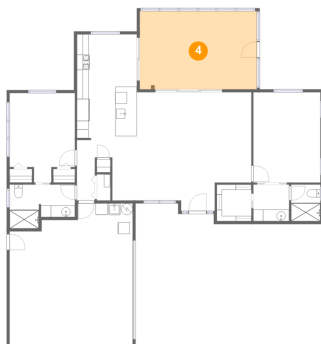
3 Floor 1 - Bath



Max Dimensions: 11'2" x 7'6"
Calculated Area: 71 sq. ft
Included: Yes

Heated: Yes
Finished: Yes
Enclosed: Yes
Contiguous: Yes
Permitted: Yes
Wet space: Yes
Addition: No
Conversion: No

4 Floor 1 - Screened Porch



Max Dimensions: 20'0" x 13'5"
Calculated Area: 268 sq. ft
Included: No

Heated: No
Finished: Yes
Enclosed: No
Contiguous: Yes
Permitted: Yes
Wet space: No
Addition: No
Conversion: No

5 Floor 1 - W.I.C.



Max Dimensions: 5'11" x 6'3"
Calculated Area: 37 sq. ft
Included: Yes

Heated: Yes
Finished: Yes
Enclosed: Yes
Contiguous: Yes
Permitted: Yes
Wet space: No
Addition: No
Conversion: No

1468 Fairway Drive, Fairway Estate, Dunedin, Pinellas County,
Florida, United States, 34698

6 Floor 1 - Hall



Max Dimensions: 3'5" x 10'4"
Calculated Area: 33 sq. ft
Included: Yes

Heated: Yes
Finished: Yes
Enclosed: Yes
Contiguous: Yes
Permitted: Yes
Wet space: No
Addition: No
Conversion: No

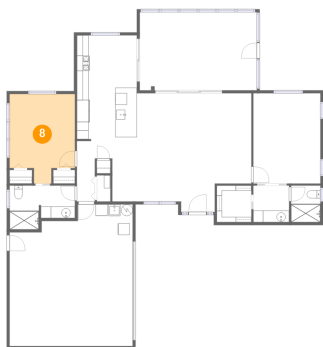
7 Floor 1 - Primary Bedroom



Max Dimensions: 11'6" x 15'5"
Calculated Area: 177 sq. ft
Included: Yes

Heated: Yes
Finished: Yes
Enclosed: Yes
Contiguous: Yes
Permitted: Yes
Wet space: No
Addition: No
Conversion: No

8 Floor 1 - Bedroom

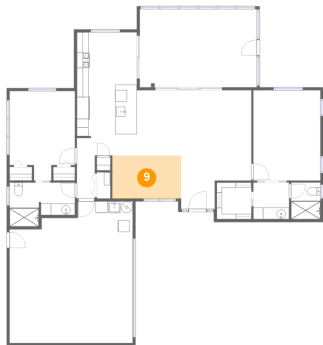


Max Dimensions: 11'2" x 15'4"
Calculated Area: 149 sq. ft
Included: Yes

Heated: Yes
Finished: Yes
Enclosed: Yes
Contiguous: Yes
Permitted: Yes
Wet space: No
Addition: No
Conversion: No

1468 Fairway Drive, Fairway Estate, Dunedin, Pinellas County,
Florida, United States, 34698

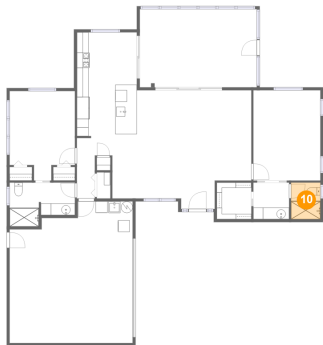
9 Floor 1 - Dining Area



Max Dimensions: 11'9" x 7'4"
Calculated Area: 87 sq. ft
Included: Yes

Heated: Yes
Finished: Yes
Enclosed: Yes
Contiguous: Yes
Permitted: Yes
Wet space: No
Addition: No
Conversion: No

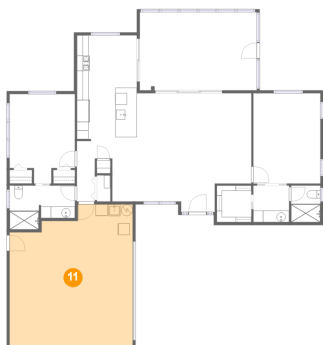
10 Floor 1 - Bath



Max Dimensions: 5'0" x 6'3"
Calculated Area: 31 sq. ft
Included: Yes

Heated: Yes
Finished: Yes
Enclosed: Yes
Contiguous: Yes
Permitted: Yes
Wet space: Yes
Addition: No
Conversion: No

11 Floor 1 - Garage



Max Dimensions: 21'1" x 24'3"
Calculated Area: 467 sq. ft
Included: No

Heated: No
Finished: No
Enclosed: Yes
Contiguous: Yes
Permitted: Yes
Wet space: No
Addition: No
Conversion: No

1468 Fairway Drive, Fairway Estate, Dunedin, Pinellas County,
Florida, United States, 34698

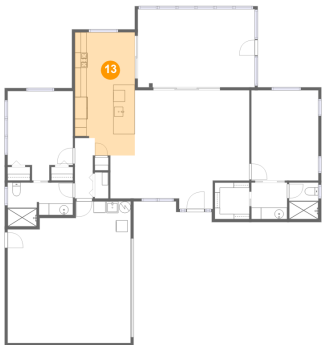
12 Floor 1 - Foyer



Max Dimensions: 5'9" x 4'10"
Calculated Area: 28 sq. ft
Included: Yes

Heated: Yes
Finished: Yes
Enclosed: Yes
Contiguous: Yes
Permitted: Yes
Wet space: No
Addition: No
Conversion: No

13 Floor 1 - Kitchen



Max Dimensions: 10'3" x 21'1"
Calculated Area: 205 sq. ft
Included: Yes

Heated: Yes
Finished: Yes
Enclosed: Yes
Contiguous: Yes
Permitted: Yes
Wet space: No
Addition: No
Conversion: No