



Home report


35 Inge Drive, Martinsville, Henry County, Virginia, United States, 24112





Property summary


**0** Garages


**4** Bedrooms

**2** Bathrooms

**0** Half baths

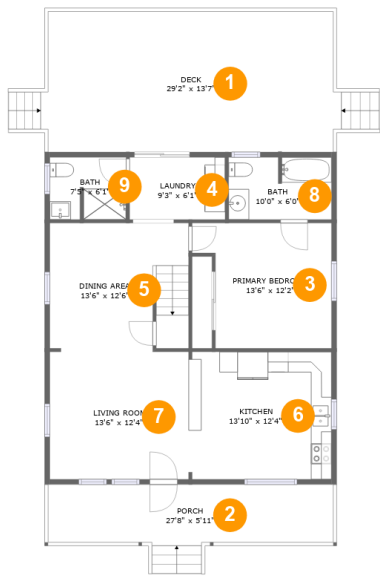
**2** Floors

**1,330** Gross living area sqft

**2,023** Total sqft

Home report

35 Inge Drive, Martinsville, Henry County, Virginia, United States, 24112

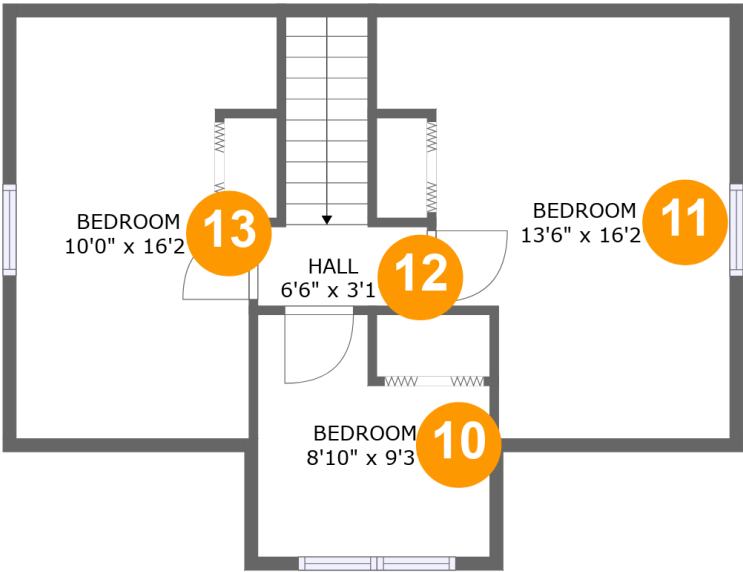


Room dimensions

Floor 1 Total sqft: 1492 Living area: 914

#		Max Dimensions	sqft	Included
1	Deck	29'2" x 13'7"	408 sq. ft	No
2	Porch	27'8" x 5'11"	170 sq. ft	No
3	Primary Bedroom	13'6" x 12'2"	144 sq. ft	Yes
4	Laundry	9'3" x 6'1"	56 sq. ft	Yes
5	Dining Area	13'6" x 12'6"	165 sq. ft	Yes
6	Kitchen	13'10" x 12'4"	171 sq. ft	Yes
7	Living Room	13'6" x 12'4"	167 sq. ft	Yes
8	Bath	10'0" x 6'0"	60 sq. ft	Yes
9	Bath	7'5" x 6'1"	44 sq. ft	Yes

35 Inge Drive, Martinsville, Henry County, Virginia, United States, 24112



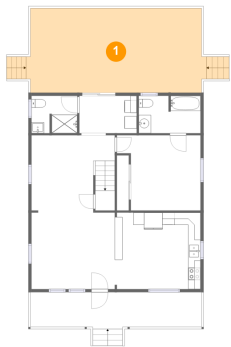
Room dimensions

Floor 2 Total sqft: 531 Living area: 416

#		Max Dimensions	sqft	Included
10	Bedroom	8'10" x 9'3"	70 sq. ft	Yes
11	Bedroom	13'6" x 16'2"	129 sq. ft	Yes
12	Hall	6'6" x 3'1"	45 sq. ft	Yes
13	Bedroom	10'0" x 16'2"	101 sq. ft	Yes

35 Inge Drive, Martinsville, Henry County, Virginia, United States, 24112

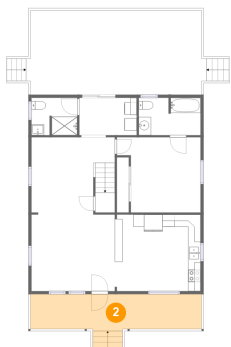
1 Floor 1 - Deck



Max Dimensions: 29'2" x 13'7"
Calculated Area: 408 sq. ft
Included: No

Heated: No
Finished: Yes
Enclosed: No
Contiguous: Yes
Permitted: Yes
Wet space: No
Addition: No
Conversion: No

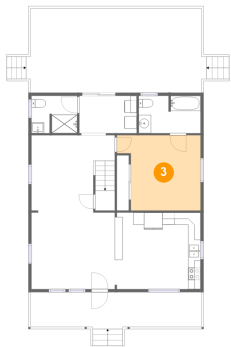
2 Floor 1 - Porch



Max Dimensions: 27'8" x 5'11"
Calculated Area: 170 sq. ft
Included: No

Heated: No
Finished: Yes
Enclosed: No
Contiguous: Yes
Permitted: Yes
Wet space: No
Addition: No
Conversion: No

3 Floor 1 - Primary Bedroom



Max Dimensions: 13'6" x 12'2"
Calculated Area: 144 sq. ft
Included: Yes

Heated: Yes
Finished: Yes
Enclosed: Yes
Contiguous: Yes
Permitted: Yes
Wet space: No
Addition: No
Conversion: No

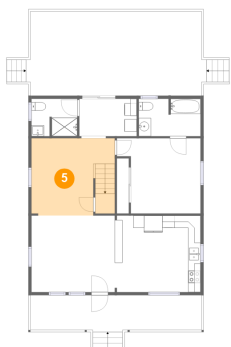
4 Floor 1 - Laundry



Max Dimensions: 9'3" x 6'1"
Calculated Area: 56 sq. ft
Included: Yes

Heated: Yes
Finished: Yes
Enclosed: Yes
Contiguous: Yes
Permitted: Yes
Wet space: No
Addition: No
Conversion: No

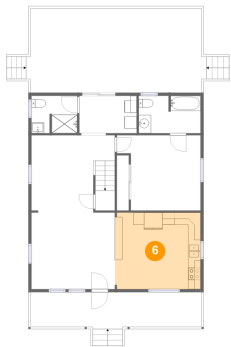
5 Floor 1 - Dining Area



Max Dimensions: 13'6" x 12'6"
Calculated Area: 165 sq. ft
Included: Yes

Heated: Yes
Finished: Yes
Enclosed: Yes
Contiguous: Yes
Permitted: Yes
Wet space: No
Addition: No
Conversion: No

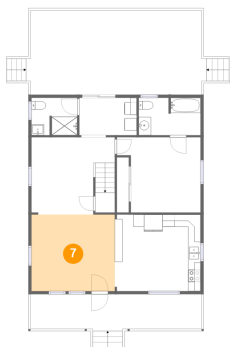
6 Floor 1 - Kitchen



Max Dimensions: 13'10" x 12'4"
Calculated Area: 171 sq. ft
Included: Yes

Heated: Yes
Finished: Yes
Enclosed: Yes
Contiguous: Yes
Permitted: Yes
Wet space: No
Addition: No
Conversion: No

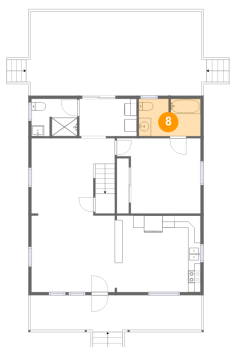
7 Floor 1 - Living Room



Max Dimensions: 13'6" x 12'4"
Calculated Area: 167 sq. ft
Included: Yes

Heated: Yes
Finished: Yes
Enclosed: Yes
Contiguous: Yes
Permitted: Yes
Wet space: No
Addition: No
Conversion: No

8 Floor 1 - Bath

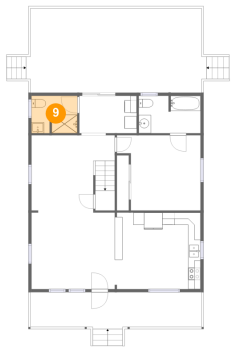


Max Dimensions: 10'0" x 6'0"
Calculated Area: 60 sq. ft
Included: Yes

Heated: Yes
Finished: Yes
Enclosed: Yes
Contiguous: Yes
Permitted: Yes
Wet space: Yes
Addition: No
Conversion: No

35 Inge Drive, Martinsville, Henry County, Virginia, United States, 24112

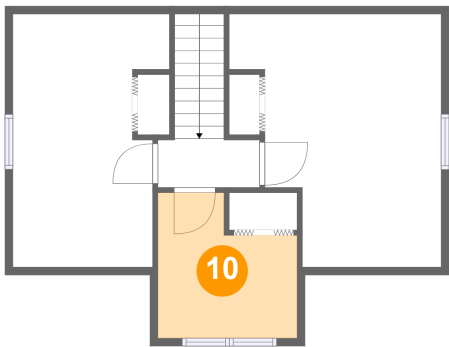
9 Floor 1 - Bath



Max Dimensions: 7'5" x 6'1"
Calculated Area: 44 sq. ft
Included: Yes

Heated: Yes
Finished: Yes
Enclosed: Yes
Contiguous: Yes
Permitted: Yes
Wet space: Yes
Addition: No
Conversion: No

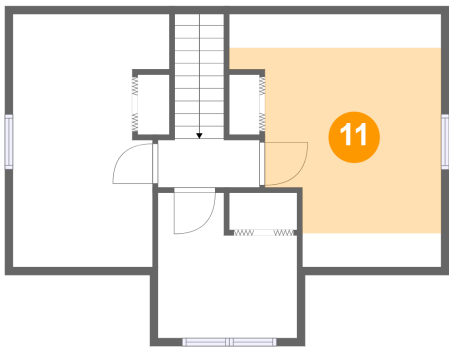
10 Floor 2 - Bedroom



Max Dimensions: 8'10" x 9'3"
Calculated Area: 70 sq. ft
Included: Yes

Heated: Yes
Finished: Yes
Enclosed: Yes
Contiguous: Yes
Permitted: Yes
Wet space: No
Addition: No
Conversion: No

11 Floor 2 - Bedroom

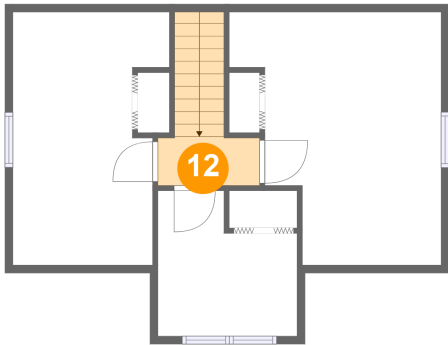


Max Dimensions: 13'6" x 16'2"
Calculated Area: 129 sq. ft
Included: Yes

Heated: Yes
Finished: Yes
Enclosed: Yes
Contiguous: Yes
Permitted: Yes
Wet space: No
Addition: No
Conversion: No

35 Inge Drive, Martinsville, Henry County, Virginia, United States, 24112

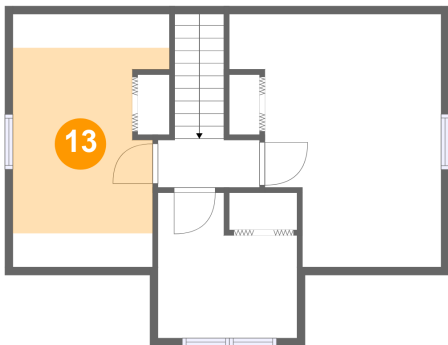
12 Floor 2 - Hall



Max Dimensions: 6'6" x 3'1"
Calculated Area: 45 sq. ft
Included: Yes

Heated: Yes
Finished: Yes
Enclosed: Yes
Contiguous: Yes
Permitted: Yes
Wet space: No
Addition: No
Conversion: No

13 Floor 2 - Bedroom



Max Dimensions: 10'0" x 16'2"
Calculated Area: 101 sq. ft
Included: Yes

Heated: Yes
Finished: Yes
Enclosed: Yes
Contiguous: Yes
Permitted: Yes
Wet space: No
Addition: No
Conversion: No