

Home report

5226 Huntridge Road, Roanoke, Roanoke County, Virginia,  
United States, 24012



**Total Area: 2569 sq. ft**  
Below Ground: 783 sq. ft, Floor 2: 903 sq. ft, Floor 3: 883 sq. ft  
Excluded: Patio 103 sq. ft, Utility 34 sq. ft, Porch 37 sq. ft, Screened porch 145 sq. ft,  
Garage 496 sq. ft, Fireplace 11 sq. ft, Walls: 236 sq. ft

Property summary



**3**  
Floors



**3**  
Bedrooms



**3**  
Bathrooms

Home report

**5226 Huntridge Road, Roanoke, Roanoke County, Virginia,  
United States, 24012**



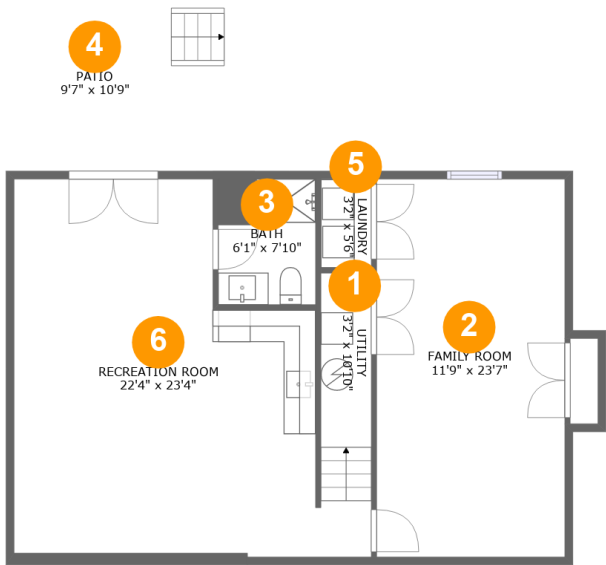
**1**  
Half baths



**1**  
Garages

Home report

5226 Huntridge Road, Roanoke, Roanoke County, Virginia,  
United States, 24012



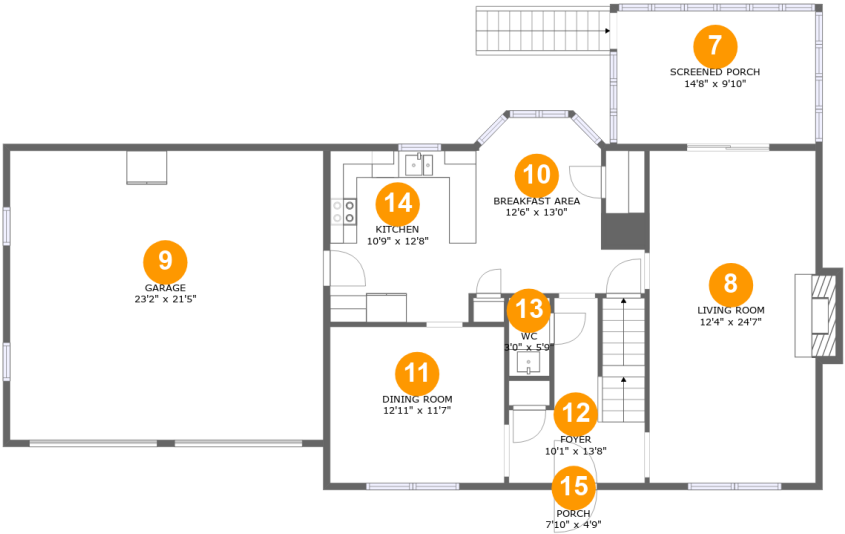
Room dimensions

Floor 1 Below ground Total:783sqft    Excluded: 137sqft

#		Max Dimensions	sqft	Included
1	Utility	3'2" x 10'10"	34 sq. ft	No
2	Family Room	11'9" x 23'7"	277 sq. ft	Yes
3	Bath	6'1" x 7'10"	48 sq. ft	Yes
4	Patio	9'7" x 10'9"	103 sq. ft	No
5	Laundry	3'2" x 5'6"	17 sq. ft	Yes
6	Recreation Room	22'4" x 23'4"	410 sq. ft	Yes

Home report

5226 Huntridge Road, Roanoke, Roanoke County, Virginia,  
United States, 24012

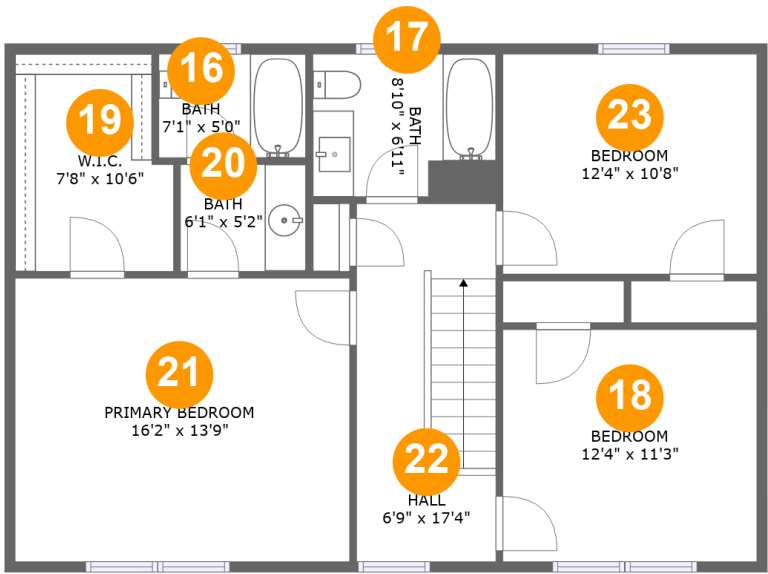


Room dimensions

Floor 2 Total:903sqft Excluded: 689sqft

#		Max Dimensions	sqft	Included
7	Screened Porch	14'8" x 9'10"	145 sq. ft	No
8	Living Room	12'4" x 24'7"	311 sq. ft	Yes
9	Garage	23'2" x 21'5"	496 sq. ft	No
10	Breakfast Area	12'6" x 13'0"	125 sq. ft	Yes
11	Dining Room	12'11" x 11'7"	149 sq. ft	Yes
12	Foyer	10'1" x 13'8"	108 sq. ft	Yes
13	WC	3'0" x 5'9"	17 sq. ft	Yes
14	Kitchen	10'9" x 12'8"	136 sq. ft	Yes
15	Porch	7'10" x 4'9"	37 sq. ft	No

5226 Huntridge Road, Roanoke, Roanoke County, Virginia,  
United States, 24012



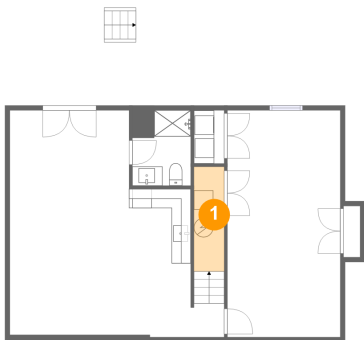
Room dimensions

Floor 3 Total:883sqft   Excluded: 0sqft

#		Max Dimensions	sqft	Included
16	Bath	7'1" x 5'0"	36 sq. ft	Yes
17	Bath	8'10" x 6'11"	61 sq. ft	Yes
18	Bedroom	12'4" x 11'3"	138 sq. ft	Yes
19	W.I.C.	7'8" x 10'6"	75 sq. ft	Yes
20	Bath	6'1" x 5'2"	31 sq. ft	Yes
21	Primary Bedroom	16'2" x 13'9"	222 sq. ft	Yes
22	Hall	6'9" x 17'4"	117 sq. ft	Yes
23	Bedroom	12'4" x 10'8"	131 sq. ft	Yes

5226 Huntridge Road, Roanoke, Roanoke County, Virginia,  
United States, 24012

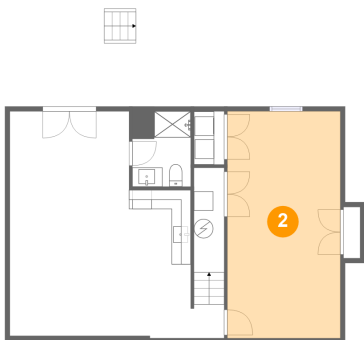
1 Floor 1 - Utility



Max Dimensions: 3'2" x 10'10"  
Calculated Area: 34 sq. ft  
Included: No

Heated: Yes  
Finished: No  
Enclosed: Yes  
Contiguous: Yes  
Permitted: Yes  
Wet space: No  
Addition: No  
Conversion: No

2 Floor 1 - Family Room

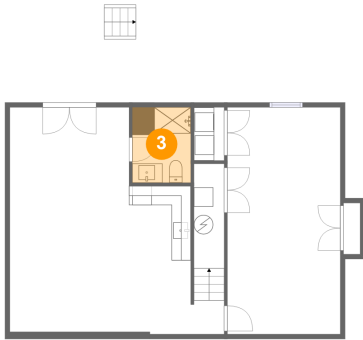


Max Dimensions: 11'9" x 23'7"  
Calculated Area: 277 sq. ft  
Included: Yes

Heated: Yes  
Finished: Yes  
Enclosed: Yes  
Contiguous: Yes  
Permitted: Yes  
Wet space: No  
Addition: No  
Conversion: No

5226 Huntridge Road, Roanoke, Roanoke County, Virginia,  
United States, 24012

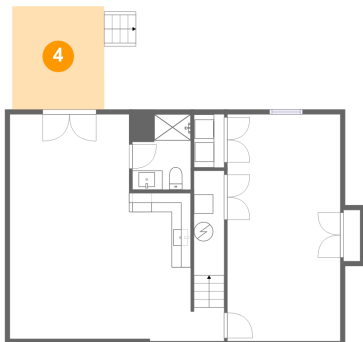
### 3 Floor 1 - Bath



Max Dimensions: 6'1" x 7'10"  
Calculated Area: 48 sq. ft  
Included: Yes

Heated: Yes  
Finished: Yes  
Enclosed: Yes  
Contiguous: Yes  
Permitted: Yes  
Wet space: Yes  
Addition: No  
Conversion: No

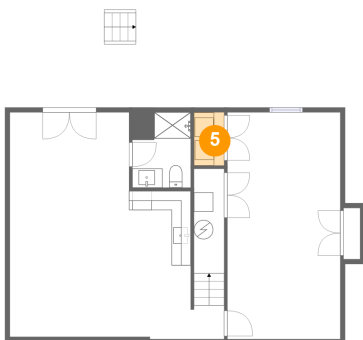
### 4 Floor 1 - Patio



Max Dimensions: 9'7" x 10'9"  
Calculated Area: 103 sq. ft  
Included: No

Heated: No  
Finished: Yes  
Enclosed: No  
Contiguous: Yes  
Permitted: Yes  
Wet space: No  
Addition: No  
Conversion: No

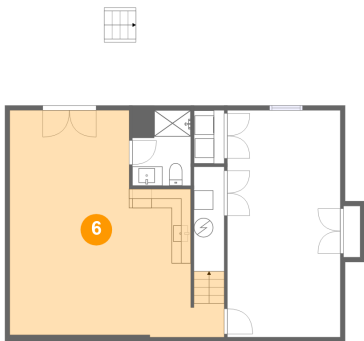
### 5 Floor 1 - Laundry



Max Dimensions: 3'2" x 5'6"  
Calculated Area: 17 sq. ft  
Included: Yes

Heated: Yes  
Finished: Yes  
Enclosed: Yes  
Contiguous: Yes  
Permitted: Yes  
Wet space: No  
Addition: No  
Conversion: No

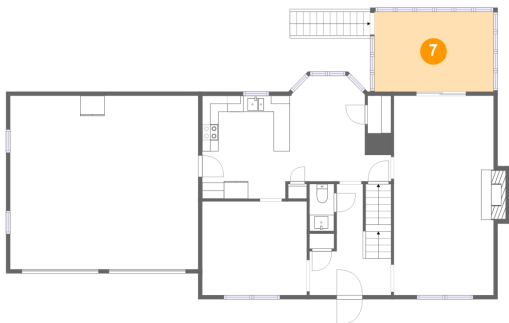
6 Floor 1 - Recreation Room



Max Dimensions: 22'4" x 23'4"  
Calculated Area: 410 sq. ft  
Included: Yes

Heated: Yes  
Finished: Yes  
Enclosed: Yes  
Contiguous: Yes  
Permitted: Yes  
Wet space: No  
Addition: No  
Conversion: No

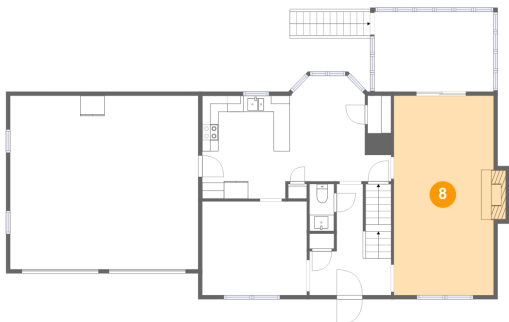
7 Floor 2 - Screened Porch



Max Dimensions: 14'8" x 9'10"  
Calculated Area: 145 sq. ft  
Included: No

Heated: No  
Finished: Yes  
Enclosed: No  
Contiguous: Yes  
Permitted: Yes  
Wet space: No  
Addition: No  
Conversion: No

8 Floor 2 - Living Room



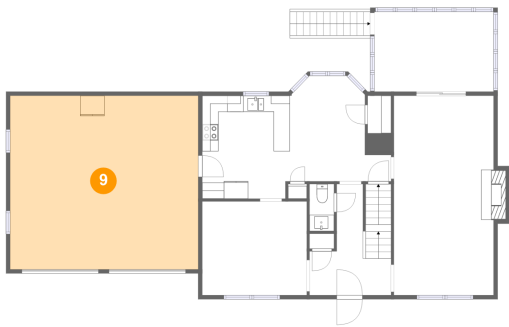
Max Dimensions: 12'4" x 24'7"  
Calculated Area: 311 sq. ft  
Included: Yes

Heated: Yes  
Finished: Yes  
Enclosed: Yes  
Contiguous: Yes  
Permitted: Yes  
Wet space: No  
Addition: No  
Conversion: No



5226 Huntridge Road, Roanoke, Roanoke County, Virginia,  
United States, 24012

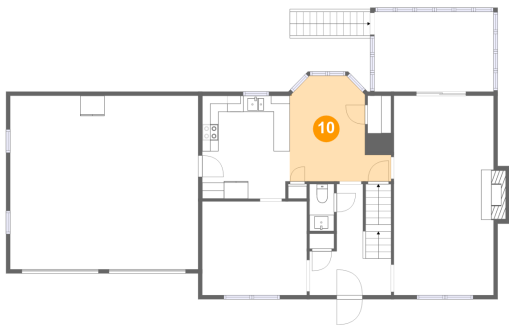
9 Floor 2 - Garage



Max Dimensions: 23'2" x 21'5"  
Calculated Area: 496 sq. ft  
Included: No

Heated: No  
Finished: No  
Enclosed: Yes  
Contiguous: Yes  
Permitted: Yes  
Wet space: No  
Addition: No  
Conversion: No

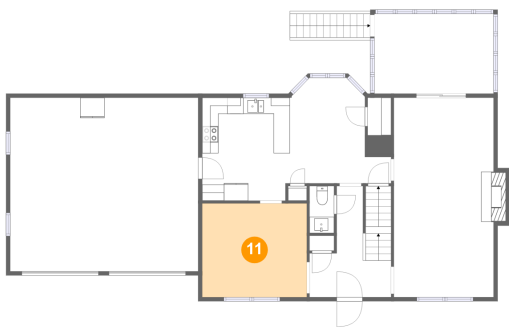
10 Floor 2 - Breakfast Area



Max Dimensions: 12'6" x 13'0"  
Calculated Area: 125 sq. ft  
Included: Yes

Heated: Yes  
Finished: Yes  
Enclosed: Yes  
Contiguous: Yes  
Permitted: Yes  
Wet space: No  
Addition: No  
Conversion: No

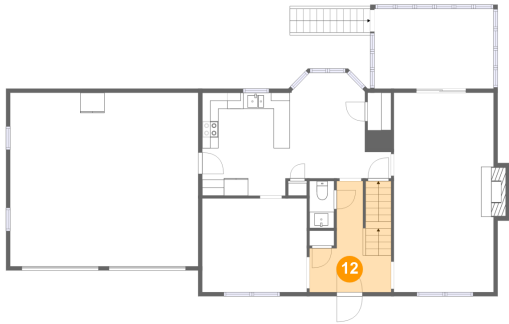
11 Floor 2 - Dining Room



Max Dimensions: 12'11" x 11'7"  
Calculated Area: 149 sq. ft  
Included: Yes

Heated: Yes  
Finished: Yes  
Enclosed: Yes  
Contiguous: Yes  
Permitted: Yes  
Wet space: No  
Addition: No  
Conversion: No

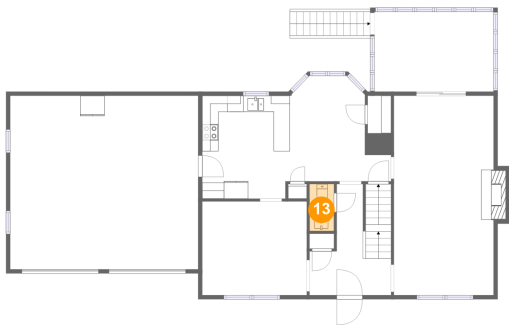
12 Floor 2 - Foyer



Max Dimensions: 10'1" x 13'8"  
Calculated Area: 108 sq. ft  
Included: Yes

Heated: Yes  
Finished: Yes  
Enclosed: Yes  
Contiguous: Yes  
Permitted: Yes  
Wet space: No  
Addition: No  
Conversion: No

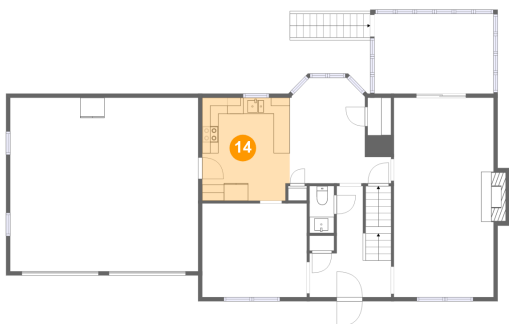
13 Floor 2 - WC



Max Dimensions: 3'0" x 5'9"  
Calculated Area: 17 sq. ft  
Included: Yes

Heated: Yes  
Finished: Yes  
Enclosed: Yes  
Contiguous: Yes  
Permitted: Yes  
Wet space: Yes  
Addition: No  
Conversion: No

14 Floor 2 - Kitchen



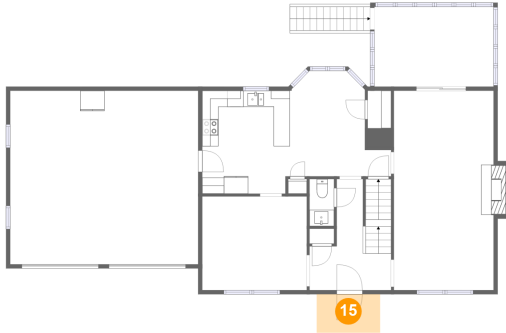
Max Dimensions: 10'9" x 12'8"  
Calculated Area: 136 sq. ft  
Included: Yes

Heated: Yes  
Finished: Yes  
Enclosed: Yes  
Contiguous: Yes  
Permitted: Yes  
Wet space: No  
Addition: No  
Conversion: No

Home report

5226 Huntridge Road, Roanoke, Roanoke County, Virginia,  
United States, 24012

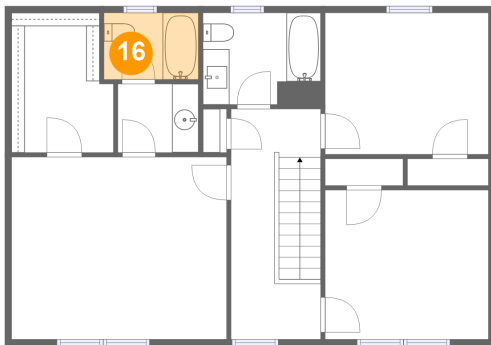
**15** Floor 2 - Porch



Max Dimensions: 7'10" x 4'9"  
Calculated Area: 37 sq. ft  
Included: No

Heated: No  
Finished: Yes  
Enclosed: No  
Contiguous: Yes  
Permitted: Yes  
Wet space: No  
Addition: No  
Conversion: No

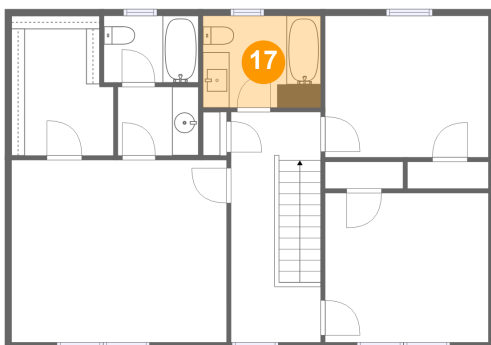
**16** Floor 3 - Bath



Max Dimensions: 7'1" x 5'0"  
Calculated Area: 36 sq. ft  
Included: Yes

Heated: Yes  
Finished: Yes  
Enclosed: Yes  
Contiguous: Yes  
Permitted: Yes  
Wet space: Yes  
Addition: No  
Conversion: No

**17** Floor 3 - Bath



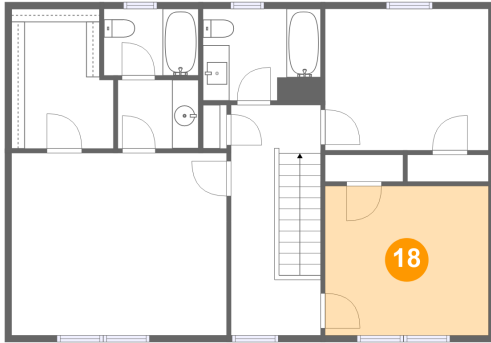
Max Dimensions: 8'10" x 6'11"  
Calculated Area: 61 sq. ft  
Included: Yes

Heated: Yes  
Finished: Yes  
Enclosed: Yes  
Contiguous: Yes  
Permitted: Yes  
Wet space: Yes  
Addition: No  
Conversion: No

Home report

5226 Huntridge Road, Roanoke, Roanoke County, Virginia,  
United States, 24012

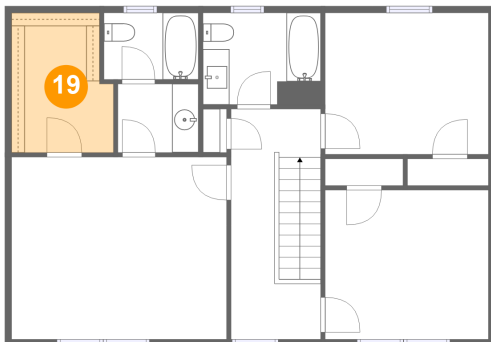
**18** Floor 3 - Bedroom



Max Dimensions: 12'4" x 11'3"  
Calculated Area: 138 sq. ft  
Included: Yes

Heated: Yes  
Finished: Yes  
Enclosed: Yes  
Contiguous: Yes  
Permitted: Yes  
Wet space: No  
Addition: No  
Conversion: No

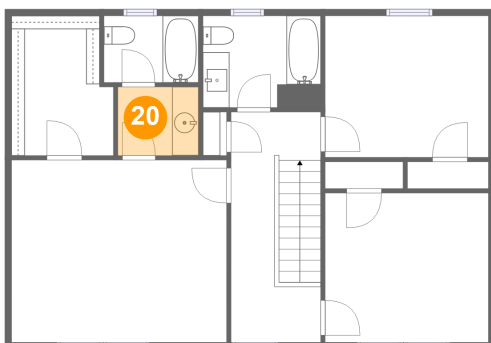
**19** Floor 3 - W.I.C.



Max Dimensions: 7'8" x 10'6"  
Calculated Area: 75 sq. ft  
Included: Yes

Heated: Yes  
Finished: Yes  
Enclosed: Yes  
Contiguous: Yes  
Permitted: Yes  
Wet space: No  
Addition: No  
Conversion: No

**20** Floor 3 - Bath



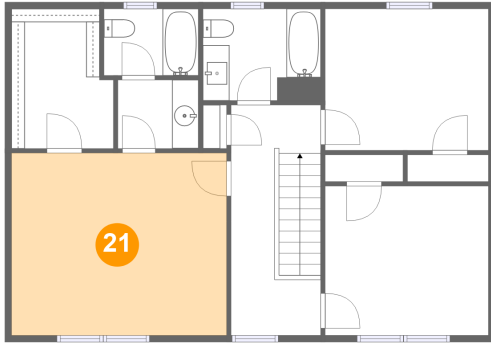
Max Dimensions: 6'1" x 5'2"  
Calculated Area: 31 sq. ft  
Included: Yes

Heated: Yes  
Finished: Yes  
Enclosed: Yes  
Contiguous: Yes  
Permitted: Yes  
Wet space: Yes  
Addition: No  
Conversion: No

## Home report

5226 Huntridge Road, Roanoke, Roanoke County, Virginia,  
United States, 24012

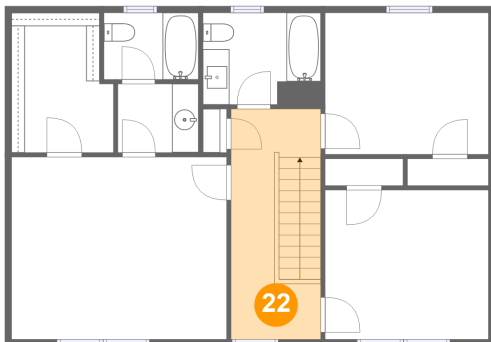
### 21 Floor 3 - Primary Bedroom



Max Dimensions: 16'2" x 13'9"  
Calculated Area: 222 sq. ft  
Included: Yes

Heated: Yes  
Finished: Yes  
Enclosed: Yes  
Contiguous: Yes  
Permitted: Yes  
Wet space: No  
Addition: No  
Conversion: No

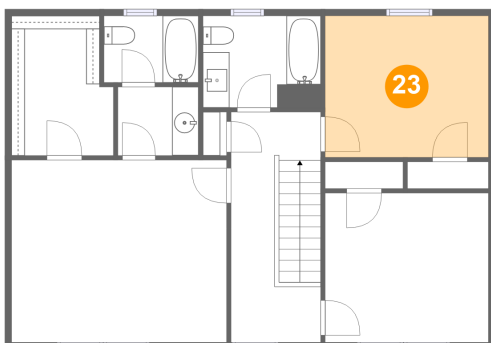
### 22 Floor 3 - Hall



Max Dimensions: 6'9" x 17'4"  
Calculated Area: 117 sq. ft  
Included: Yes

Heated: Yes  
Finished: Yes  
Enclosed: Yes  
Contiguous: Yes  
Permitted: Yes  
Wet space: No  
Addition: No  
Conversion: No

### 23 Floor 3 - Bedroom



Max Dimensions: 12'4" x 10'8"  
Calculated Area: 131 sq. ft  
Included: Yes

Heated: Yes  
Finished: Yes  
Enclosed: Yes  
Contiguous: Yes  
Permitted: Yes  
Wet space: No  
Addition: No  
Conversion: No