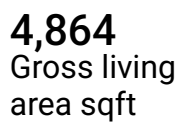
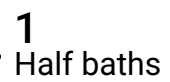
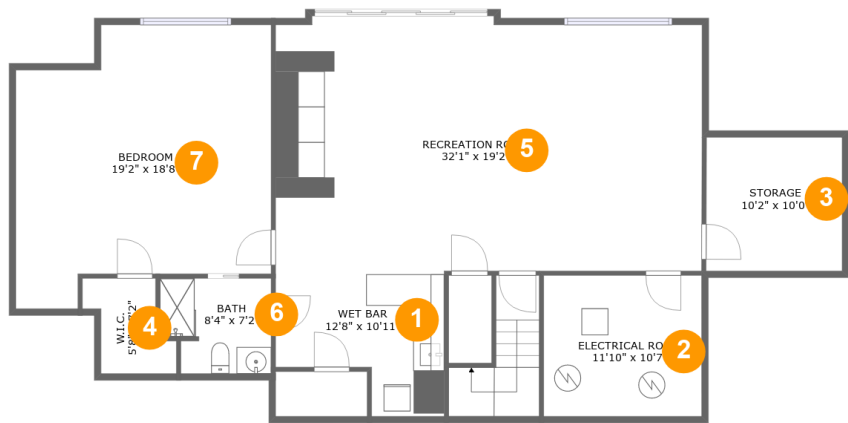


4342 Toddsbury Drive, Vinton, Roanoke County, Virginia, United States, 24179



Home report

4342 Toddsbury Drive, Vinton, Roanoke County, Virginia, United States, 24179



Room dimensions

Floor 1 Total sqft: 1609 Living area: 1354

#		Max Dimensions	sqft	Included
1	Wet Bar	12'8" x 10'11"	112 sq. ft	Yes
2	Electrical Room	11'10" x 10'7"	126 sq. ft	No
3	Storage	10'2" x 10'0"	103 sq. ft	No
4	W.I.C.	5'8" x 7'2"	36 sq. ft	Yes
5	Recreation Room	32'1" x 19'2"	602 sq. ft	Yes
6	Bath	8'4" x 7'2"	55 sq. ft	Yes
7	Bedroom	19'2" x 18'8"	349 sq. ft	Yes

Home report

4342 Toddsbury Drive, Vinton, Roanoke County, Virginia, United States, 24179



Room dimensions

Floor 2

Total sqft: 3737

Living area: 2002

#		Max Dimensions	sqft	Included
8	WC	6'11" x 5'11"	40 sq. ft	Yes
9	Patio	16'3" x 24'6"	395 sq. ft	No
10	Pantry	14'1" x 10'4"	88 sq. ft	Yes
11	Laundry	8'4" x 12'0"	81 sq. ft	Yes
12	Balcony	19'9" x 11'4"	211 sq. ft	No
13	Breakfast Area	12'2" x 7'9"	94 sq. ft	Yes
14	Porch	29'11" x 11'0"	236 sq. ft	No
15	Living Room	23'7" x 19'2"	395 sq. ft	Yes
16	Garage	27'3" x 22'1"	548 sq. ft	No
17	Primary Bath	9'4" x 9'8"	90 sq. ft	Yes
18	Primary Bedroom	12'9" x 24'11"	290 sq. ft	Yes

Home report

4342 Toddsbury Drive, Vinton, Roanoke County, Virginia, United States, 24179

#		Max Dimensions	sqft	Included
19	Dining Area	10'1" x 19'6"	196 sq. ft	Yes
20	Foyer	17'4" x 7'9"	142 sq. ft	Yes
21	Deck	19'10" x 20'3"	309 sq. ft	No
22	Kitchen	12'8" x 21'8"	265 sq. ft	Yes
23	W.I.C.	8'5" x 8'7"	61 sq. ft	Yes
24	W.I.C.	8'6" x 9'0"	64 sq. ft	Yes
25	WC	3'1" x 7'8"	24 sq. ft	Yes

Home report

4342 Toddsbury Drive, Vinton, Roanoke County, Virginia, United States, 24179



Room dimensions

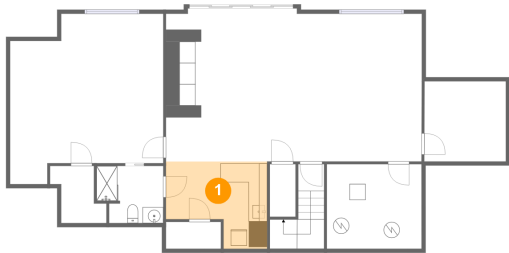
Floor 3

Total sqft: 1947

Living area: 1508

#		Max Dimensions	sqft	Included
26	W.I.C.	4'11" x 7'11"	39 sq. ft	Yes
27	Recreation Room	35'5" x 17'9"	444 sq. ft	Yes
28	Hall	29'9" x 16'1"	374 sq. ft	Yes
29	Attic	8'4" x 4'7"	35 sq. ft	No
30	Bedroom	12'6" x 18'0"	196 sq. ft	Yes
31	Open To Below	19'11" x 13'11"	272 sq. ft	No
32	Bath	7'11" x 9'9"	67 sq. ft	Yes
33	Attic	13'7" x 4'4"	56 sq. ft	No
34	Bedroom	12'9" x 17'3"	197 sq. ft	Yes
35	Attic	7'9" x 5'5"	42 sq. ft	No

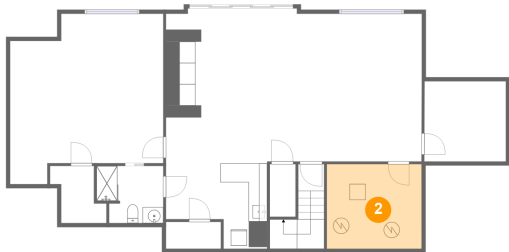
1 Floor 1 - Wet Bar



Max Dimensions: 12'8" x 10'11"
Calculated Area: 112 sq. ft
Included: Yes

Heated: Yes
Finished: Yes
Enclosed: Yes
Contiguous: Yes
Permitted: Yes
Wet space: No
Addition: No
Conversion: No

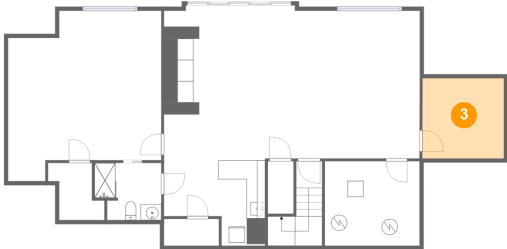
2 Floor 1 - Electrical Room



Max Dimensions: 11'10" x 10'7"
Calculated Area: 126 sq. ft
Included: No

Heated: No
Finished: No
Enclosed: Yes
Contiguous: Yes
Permitted: Yes
Wet space: No
Addition: No
Conversion: No

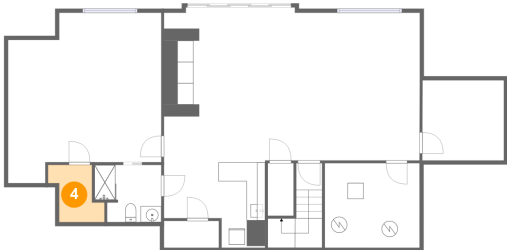
3 Floor 1 - Storage



Max Dimensions: 10'2" x 10'0"
Calculated Area: 103 sq. ft
Included: No

Heated: No
Finished: No
Enclosed: No
Contiguous: Yes
Permitted: Yes
Wet space: No
Addition: No
Conversion: No

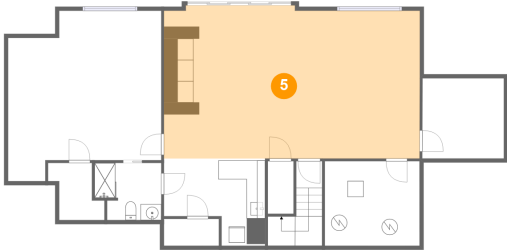
4 Floor 1 - W.I.C.



Max Dimensions: 5'8" x 7'2"
Calculated Area: 36 sq. ft
Included: Yes

Heated: Yes
Finished: Yes
Enclosed: Yes
Contiguous: Yes
Permitted: Yes
Wet space: No
Addition: No
Conversion: No

5 Floor 1 - Recreation Room

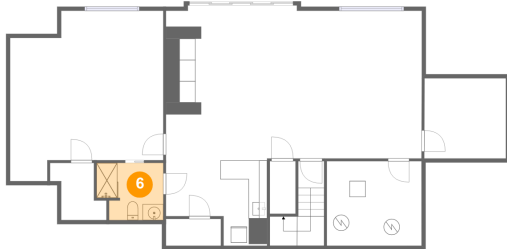


Max Dimensions: 32'1" x 19'2"
Calculated Area: 602 sq. ft
Included: Yes

Heated: Yes
Finished: Yes
Enclosed: Yes
Contiguous: Yes
Permitted: Yes
Wet space: No
Addition: No
Conversion: No

4342 Toddsbury Drive, Vinton, Roanoke County, Virginia, United States, 24179

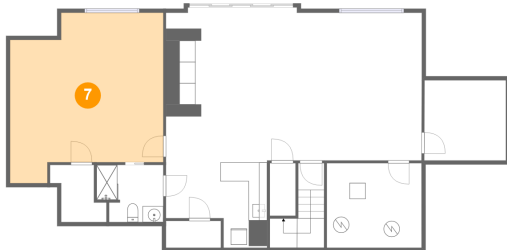
6 Floor 1 - Bath



Max Dimensions: 8'4" x 7'2"
Calculated Area: 55 sq. ft
Included: Yes

Heated: Yes
Finished: Yes
Enclosed: Yes
Contiguous: Yes
Permitted: Yes
Wet space: Yes
Addition: No
Conversion: No

7 Floor 1 - Bedroom



Max Dimensions: 19'2" x 18'8"
Calculated Area: 349 sq. ft
Included: Yes

Heated: Yes
Finished: Yes
Enclosed: Yes
Contiguous: Yes
Permitted: Yes
Wet space: No
Addition: No
Conversion: No

8 Floor 2 - WC

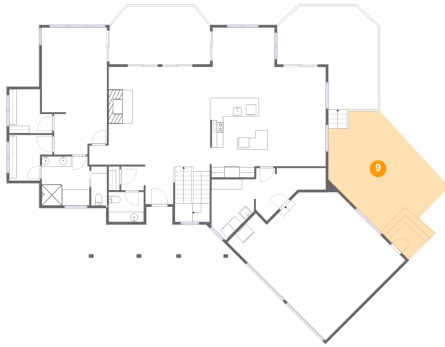


Max Dimensions: 6'11" x 5'11"
Calculated Area: 40 sq. ft
Included: Yes

Heated: Yes
Finished: Yes
Enclosed: Yes
Contiguous: Yes
Permitted: Yes
Wet space: Yes
Addition: No
Conversion: No

4342 Toddsbury Drive, Vinton, Roanoke County, Virginia, United States, 24179

9 Floor 2 - Patio



Max Dimensions: 16'3" x 24'6"
Calculated Area: 395 sq. ft
Included: No

Heated: No
Finished: Yes
Enclosed: No
Contiguous: Yes
Permitted: Yes
Wet space: No
Addition: No
Conversion: No

10 Floor 2 - Pantry



Max Dimensions: 14'1" x 10'4"
Calculated Area: 88 sq. ft
Included: Yes

Heated: Yes
Finished: Yes
Enclosed: Yes
Contiguous: Yes
Permitted: Yes
Wet space: No
Addition: No
Conversion: No

11 Floor 2 - Laundry



Max Dimensions: 8'4" x 12'0"
Calculated Area: 81 sq. ft
Included: Yes

Heated: Yes
Finished: Yes
Enclosed: Yes
Contiguous: Yes
Permitted: Yes
Wet space: No
Addition: No
Conversion: No

4342 Toddsbury Drive, Vinton, Roanoke County, Virginia, United States, 24179

12 Floor 2 - Balcony



Max Dimensions: 19'9" x 11'4"
Calculated Area: 211 sq. ft
Included: No

Heated: No
Finished: Yes
Enclosed: No
Contiguous: Yes
Permitted: Yes
Wet space: No
Addition: No
Conversion: No

13 Floor 2 - Breakfast Area



Max Dimensions: 12'2" x 7'9"
Calculated Area: 94 sq. ft
Included: Yes

Heated: Yes
Finished: Yes
Enclosed: Yes
Contiguous: Yes
Permitted: Yes
Wet space: No
Addition: No
Conversion: No

14 Floor 2 - Porch

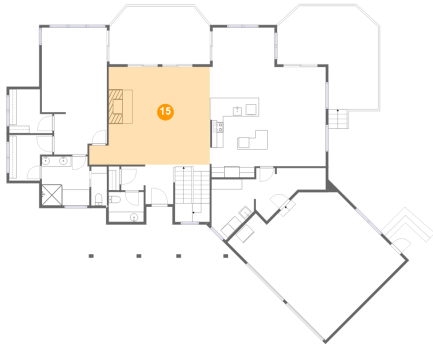


Max Dimensions: 29'11" x 11'0"
Calculated Area: 236 sq. ft
Included: No

Heated: No
Finished: Yes
Enclosed: No
Contiguous: Yes
Permitted: Yes
Wet space: No
Addition: No
Conversion: No

4342 Toddsbury Drive, Vinton, Roanoke County, Virginia, United States, 24179

15 Floor 2 - Living Room



Max Dimensions: 23'7" x 19'2"
Calculated Area: 395 sq. ft
Included: Yes

Heated: Yes
Finished: Yes
Enclosed: Yes
Contiguous: Yes
Permitted: Yes
Wet space: No
Addition: No
Conversion: No

16 Floor 2 - Garage



Max Dimensions: 27'3" x 22'1"
Calculated Area: 548 sq. ft
Included: No

Heated: No
Finished: No
Enclosed: Yes
Contiguous: Yes
Permitted: Yes
Wet space: No
Addition: No
Conversion: No

17 Floor 2 - Primary Bath



Max Dimensions: 9'4" x 9'8"
Calculated Area: 90 sq. ft
Included: Yes

Heated: Yes
Finished: Yes
Enclosed: Yes
Contiguous: Yes
Permitted: Yes
Wet space: Yes
Addition: No
Conversion: No

4342 Toddsbury Drive, Vinton, Roanoke County, Virginia, United States, 24179

18 Floor 2 - Primary Bedroom



Max Dimensions: 12'9" x 24'11"
Calculated Area: 290 sq. ft
Included: Yes

Heated: Yes
Finished: Yes
Enclosed: Yes
Contiguous: Yes
Permitted: Yes
Wet space: No
Addition: No
Conversion: No

19 Floor 2 - Dining Area



Max Dimensions: 10'1" x 19'6"
Calculated Area: 196 sq. ft
Included: Yes

Heated: Yes
Finished: Yes
Enclosed: Yes
Contiguous: Yes
Permitted: Yes
Wet space: No
Addition: No
Conversion: No

20 Floor 2 - Foyer



Max Dimensions: 17'4" x 7'9"
Calculated Area: 142 sq. ft
Included: Yes

Heated: Yes
Finished: Yes
Enclosed: Yes
Contiguous: Yes
Permitted: Yes
Wet space: No
Addition: No
Conversion: No

4342 Toddsbury Drive, Vinton, Roanoke County, Virginia, United States, 24179

21 Floor 2 - Deck



Max Dimensions: 19'10" x 20'3"
Calculated Area: 309 sq. ft
Included: No

Heated: No
Finished: Yes
Enclosed: No
Contiguous: Yes
Permitted: Yes
Wet space: No
Addition: No
Conversion: No

22 Floor 2 - Kitchen



Max Dimensions: 12'8" x 21'8"
Calculated Area: 265 sq. ft
Included: Yes

Heated: Yes
Finished: Yes
Enclosed: Yes
Contiguous: Yes
Permitted: Yes
Wet space: No
Addition: No
Conversion: No

23 Floor 2 - W.I.C.



Max Dimensions: 8'5" x 8'7"
Calculated Area: 61 sq. ft
Included: Yes

Heated: Yes
Finished: Yes
Enclosed: Yes
Contiguous: Yes
Permitted: Yes
Wet space: No
Addition: No
Conversion: No

4342 Toddsbury Drive, Vinton, Roanoke County, Virginia, United States, 24179

24 Floor 2 - W.I.C.



Max Dimensions: 8'6" x 9'0"
Calculated Area: 64 sq. ft
Included: Yes

Heated: Yes
Finished: Yes
Enclosed: Yes
Contiguous: Yes
Permitted: Yes
Wet space: No
Addition: No
Conversion: No

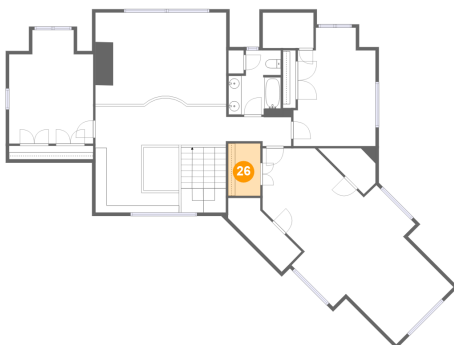
25 Floor 2 - WC



Max Dimensions: 3'1" x 7'8"
Calculated Area: 24 sq. ft
Included: Yes

Heated: Yes
Finished: Yes
Enclosed: Yes
Contiguous: Yes
Permitted: Yes
Wet space: No
Addition: No
Conversion: No

26 Floor 3 - W.I.C.

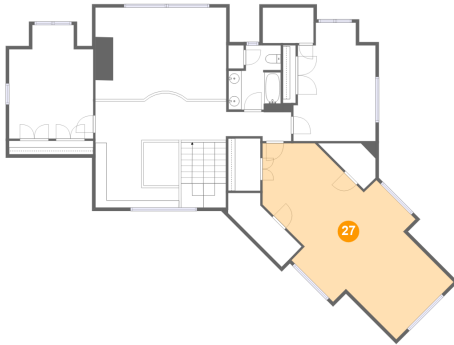


Max Dimensions: 4'11" x 7'11"
Calculated Area: 39 sq. ft
Included: Yes

Heated: Yes
Finished: Yes
Enclosed: Yes
Contiguous: Yes
Permitted: Yes
Wet space: No
Addition: No
Conversion: No

4342 Toddsbury Drive, Vinton, Roanoke County, Virginia, United States, 24179

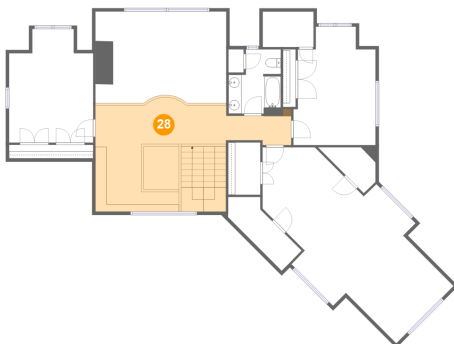
27 Floor 3 - Recreation Room



Max Dimensions: 35'5" x 17'9"
Calculated Area: 444 sq. ft
Included: Yes

Heated: Yes
Finished: Yes
Enclosed: Yes
Contiguous: Yes
Permitted: Yes
Wet space: No
Addition: No
Conversion: No

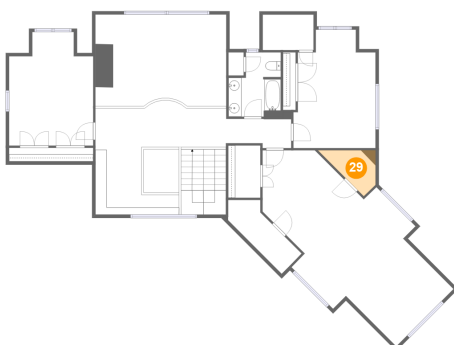
28 Floor 3 - Hall



Max Dimensions: 29'9" x 16'1"
Calculated Area: 374 sq. ft
Included: Yes

Heated: Yes
Finished: Yes
Enclosed: Yes
Contiguous: Yes
Permitted: Yes
Wet space: No
Addition: No
Conversion: No

29 Floor 3 - Attic

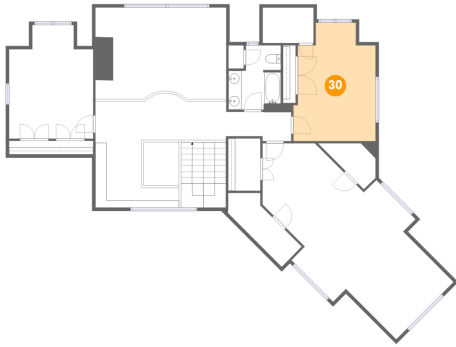


Max Dimensions: 8'4" x 4'7"
Calculated Area: 35 sq. ft
Included: No

Heated: No
Finished: No
Enclosed: Yes
Contiguous: Yes
Permitted: Yes
Wet space: No
Addition: No
Conversion: No

4342 Toddsbury Drive, Vinton, Roanoke County, Virginia, United States, 24179

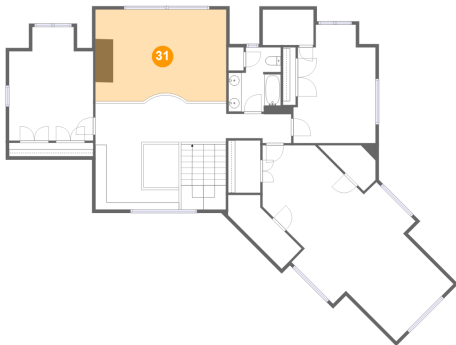
30 Floor 3 - Bedroom



Max Dimensions: 12'6" x 18'0"
Calculated Area: 196 sq. ft
Included: Yes

Heated: Yes
Finished: Yes
Enclosed: Yes
Contiguous: Yes
Permitted: Yes
Wet space: No
Addition: No
Conversion: No

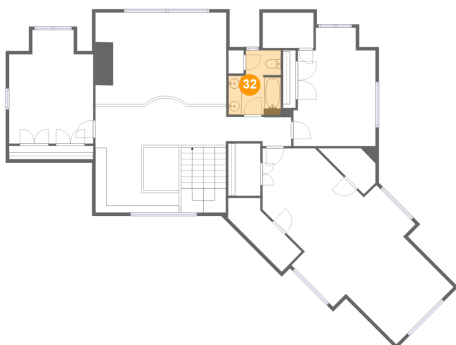
31 Floor 3 - Open To Below



Max Dimensions: 19'11" x 13'11"
Calculated Area: 272 sq. ft
Included: No

Heated: No
Finished: No
Enclosed: No
Contiguous: Yes
Permitted: No
Wet space: No
Addition: No
Conversion: No

32 Floor 3 - Bath

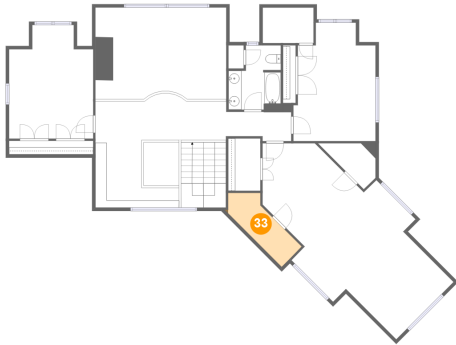


Max Dimensions: 7'11" x 9'9"
Calculated Area: 67 sq. ft
Included: Yes

Heated: Yes
Finished: Yes
Enclosed: Yes
Contiguous: Yes
Permitted: Yes
Wet space: Yes
Addition: No
Conversion: No

4342 Toddsbury Drive, Vinton, Roanoke County, Virginia, United States, 24179

33 Floor 3 - Attic



Max Dimensions: 13'7" x 4'4"
Calculated Area: 56 sq. ft
Included: No

Heated: No
Finished: No
Enclosed: Yes
Contiguous: Yes
Permitted: Yes
Wet space: No
Addition: No
Conversion: No

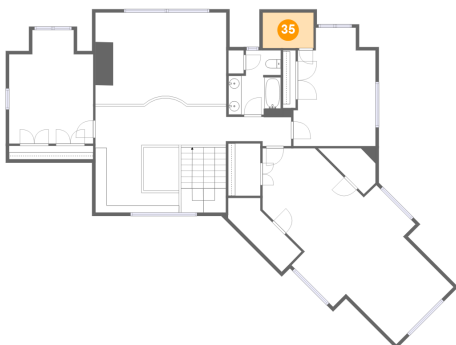
34 Floor 3 - Bedroom



Max Dimensions: 12'9" x 17'3"
Calculated Area: 197 sq. ft
Included: Yes

Heated: Yes
Finished: Yes
Enclosed: Yes
Contiguous: Yes
Permitted: Yes
Wet space: No
Addition: No
Conversion: No

35 Floor 3 - Attic



Max Dimensions: 7'9" x 5'5"
Calculated Area: 42 sq. ft
Included: No

Heated: No
Finished: No
Enclosed: Yes
Contiguous: Yes
Permitted: Yes
Wet space: No
Addition: No
Conversion: No