



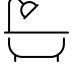
25 Old Chester Road, Essex Fells, Essex County, New Jersey, United States, 07021




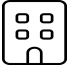
Property summary


 **1** Garages


 **3** Bedrooms

 **4** Bathrooms

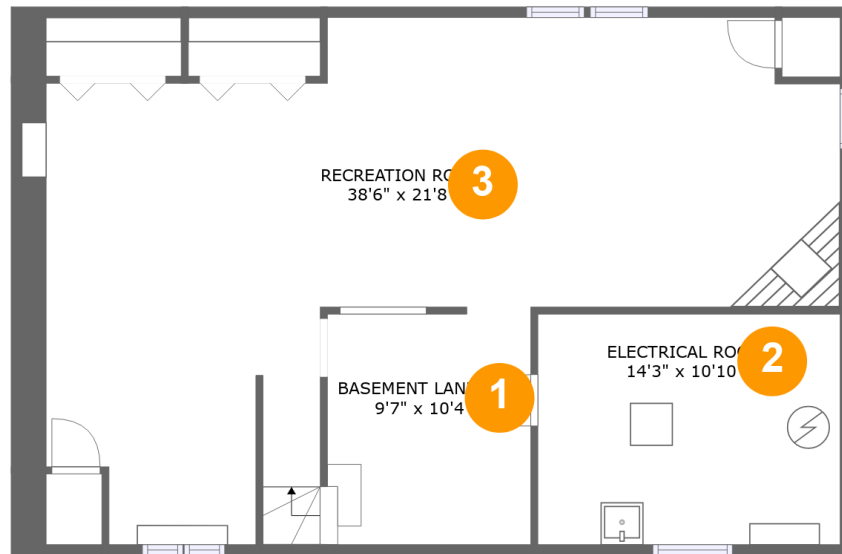
 **2** Half baths

 **4** Floors

 **3,851** Gross living area sqft

 **7,097** Total sqft

25 Old Chester Road, Essex Fells, Essex County, New Jersey, United States, 07021



Room dimensions

Floor 1

Total sqft: 1020 Living area: 0

#		Dimensions	sqft	Counted as living area
1	Basement Landing	9'7" x 10'4"	113 sq. ft	No
2	Electrical Room	14'3" x 10'10"	154 sq. ft	No
3	Recreation Room	38'6" x 21'8"	585 sq. ft	No

25 Old Chester Road, Essex Fells, Essex County, New Jersey, United States, 07021



Room dimensions

Floor 2 Total sqft: 4024 Living area: 2003

#		Dimensions	sqft	Counted as living area
4	Kitchen	16'7" x 14'5"	228 sq. ft	Yes
5	Patio	8'11" x 13'0"	111 sq. ft	No
6	WC	5'0" x 4'9"	24 sq. ft	Yes
7	Family Room	19'6" x 18'8"	364 sq. ft	Yes
8	Mud Room	11'7" x 8'6"	69 sq. ft	Yes
9	Patio	20'8" x 21'11"	352 sq. ft	No
10	Dining Room	21'7" x 14'7"	295 sq. ft	Yes
11	WC	5'0" x 3'4"	15 sq. ft	Yes
12	Breakfast Area	11'0" x 11'11"	131 sq. ft	Yes
13	Porch	9'0" x 5'2"	47 sq. ft	No
14	Office	10'0" x 10'10"	109 sq. ft	Yes

25 Old Chester Road, Essex Fells, Essex County, New Jersey, United States, 07021

#		Dimensions	sqft	Counted as living area
15	Swimming Pool	38'8" x 18'10"	729 sq. ft	No
16	Foyer	8'9" x 10'10"	106 sq. ft	Yes
17	Deck	45'3" x 37'11"	1651 sq. ft	No
18	Living Room	24'6" x 13'7"	314 sq. ft	Yes
19	Hall	14'5" x 3'1"	44 sq. ft	Yes
20	Laundry	6'8" x 7'5"	50 sq. ft	Yes
21	Garage	24'11" x 20'3"	505 sq. ft	No
22	Patio	11'10" x 4'6"	53 sq. ft	No

25 Old Chester Road, Essex Fells, Essex County, New Jersey, United States, 07021



Room dimensions

Floor 3

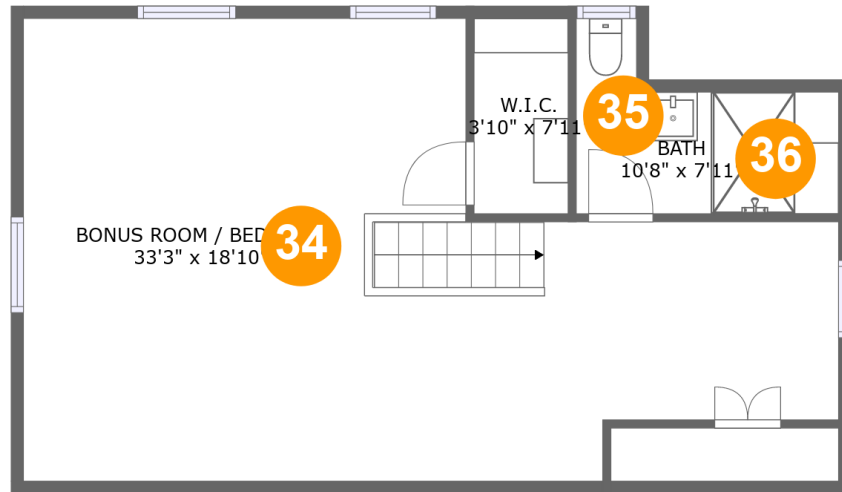
Total sqft: 1398 Living area: 1330

#		Dimensions	sqft	Counted as living area
23	W.I.C.	5'0" x 6'11"	35 sq. ft	Yes
24	Hall	10'6" x 10'1"	110 sq. ft	Yes
25	Bedroom	14'1" x 10'10"	152 sq. ft	Yes
26	Hall	11'7" x 9'1"	60 sq. ft	Yes
27	Bath	5'5" x 10'6"	57 sq. ft	Yes
28	Bedroom	14'1" x 10'6"	148 sq. ft	Yes
29	Hall	17'6" x 3'8"	52 sq. ft	Yes
30	Primary Bath	13'0" x 10'6"	107 sq. ft	Yes
31	Primary Bedroom	13'2" x 17'6"	215 sq. ft	Yes
32	Office / Bedroom	14'9" x 15'4"	149 sq. ft	Yes
33	Bath	8'3" x 6'1"	39 sq. ft	Yes

Scan captured on Sat, 08 Mar 2025 23:27:34 GMT

Information is calculated by Cubicasa technology deemed highly reliable but not guaranteed.

25 Old Chester Road, Essex Fells, Essex County, New Jersey, United States, 07021



Room dimensions

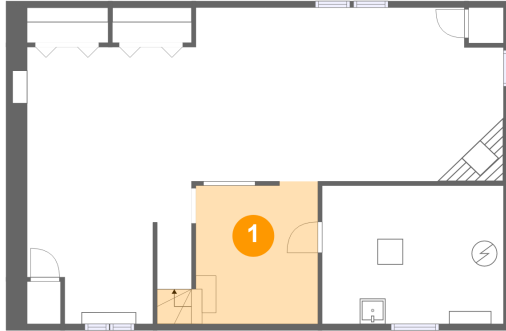
Floor 4

Total sqft: 655 Living area: 518

#		Dimensions	sqft	Counted as living area
34	Bonus Room / Bedroom	33'3" x 18'10"	397 sq. ft	Yes
35	W.I.C.	3'10" x 7'11"	23 sq. ft	Yes
36	Bath	10'8" x 7'11"	60 sq. ft	Yes

25 Old Chester Road, Essex Fells, Essex County, New Jersey, United States, 07021

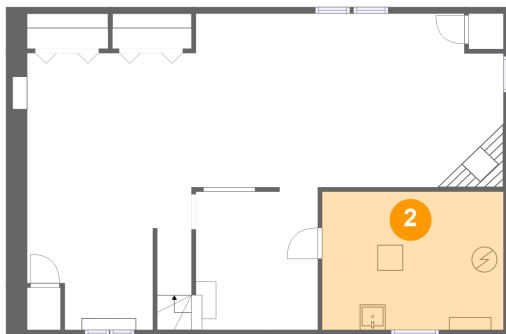
1 Floor 1 - Basement Landing



Dimensions: 9'7" x 10'4"
Area: 113 sq. ft
Counted as living area: No

Heated: Yes
Finished: No
Enclosed: Yes
Contiguous: Yes
Permitted: Yes
Wet space: No
Addition: No
Conversion: No

2 Floor 1 - Electrical Room

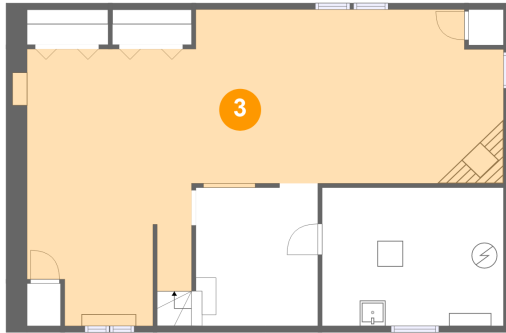


Dimensions: 14'3" x 10'10"
Area: 154 sq. ft
Counted as living area: No

Heated: No
Finished: No
Enclosed: Yes
Contiguous: Yes
Permitted: Yes
Wet space: No
Addition: No
Conversion: No

25 Old Chester Road, Essex Fells, Essex County, New Jersey, United States, 07021

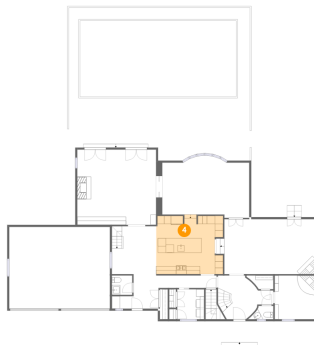
3 Floor 1 - Recreation Room



Dimensions: 38'6" x 21'8"
Area: 585 sq. ft
Counted as living area: No

Heated: Yes
Finished: Yes
Enclosed: Yes
Contiguous: No
Permitted: Yes
Wet space: No
Addition: No
Conversion: No

4 Floor 2 - Kitchen



Dimensions: 16'7" x 14'5"
Area: 228 sq. ft
Counted as living area: Yes

Heated: Yes
Finished: Yes
Enclosed: Yes
Contiguous: Yes
Permitted: Yes
Wet space: No
Addition: No
Conversion: No

5 Floor 2 - Patio



Dimensions: 8'11" x 13'0"
Area: 111 sq. ft
Counted as living area: No

Heated: No
Finished: Yes
Enclosed: No
Contiguous: Yes
Permitted: Yes
Wet space: No
Addition: No
Conversion: No

25 Old Chester Road, Essex Fells, Essex County, New Jersey, United States, 07021

6 Floor 2 - WC



Dimensions: 5'0" x 4'9"
Area: 24 sq. ft
Counted as living area: Yes

Heated: Yes
Finished: Yes
Enclosed: Yes
Contiguous: Yes
Permitted: Yes
Wet space: Yes
Addition: No
Conversion: No

7 Floor 2 - Family Room



Dimensions: 19'6" x 18'8"
Area: 364 sq. ft
Counted as living area: Yes

Heated: Yes
Finished: Yes
Enclosed: Yes
Contiguous: Yes
Permitted: Yes
Wet space: No
Addition: No
Conversion: No

8 Floor 2 - Mud Room



Dimensions: 11'7" x 8'6"
Area: 69 sq. ft
Counted as living area: Yes

Heated: Yes
Finished: Yes
Enclosed: Yes
Contiguous: Yes
Permitted: Yes
Wet space: No
Addition: No
Conversion: No

25 Old Chester Road, Essex Fells, Essex County, New Jersey, United States, 07021

9 Floor 2 - Patio



Dimensions: 20'8" x 21'11"
Area: 352 sq. ft
Counted as living area: No

Heated: No
Finished: Yes
Enclosed: No
Contiguous: Yes
Permitted: Yes
Wet space: No
Addition: No
Conversion: No

10 Floor 2 - Dining Room



Dimensions: 21'7" x 14'7"
Area: 295 sq. ft
Counted as living area: Yes

Heated: Yes
Finished: Yes
Enclosed: Yes
Contiguous: Yes
Permitted: Yes
Wet space: No
Addition: No
Conversion: No

11 Floor 2 - WC



Dimensions: 5'0" x 3'4"
Area: 15 sq. ft
Counted as living area: Yes

Heated: Yes
Finished: Yes
Enclosed: Yes
Contiguous: Yes
Permitted: Yes
Wet space: Yes
Addition: No
Conversion: No

25 Old Chester Road, Essex Fells, Essex County, New Jersey, United States, 07021

12 Floor 2 - Breakfast Area



Dimensions: 11'0" x 11'11"
Area: 131 sq. ft
Counted as living area: Yes

Heated: Yes
Finished: Yes
Enclosed: Yes
Contiguous: Yes
Permitted: Yes
Wet space: No
Addition: No
Conversion: No

13 Floor 2 - Porch



Dimensions: 9'0" x 5'2"
Area: 47 sq. ft
Counted as living area: No

Heated: No
Finished: Yes
Enclosed: No
Contiguous: Yes
Permitted: Yes
Wet space: No
Addition: No
Conversion: No

14 Floor 2 - Office

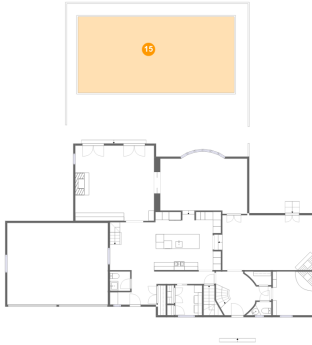


Dimensions: 10'0" x 10'10"
Area: 109 sq. ft
Counted as living area: Yes

Heated: Yes
Finished: Yes
Enclosed: Yes
Contiguous: Yes
Permitted: Yes
Wet space: No
Addition: No
Conversion: No

25 Old Chester Road, Essex Fells, Essex County, New Jersey, United States, 07021

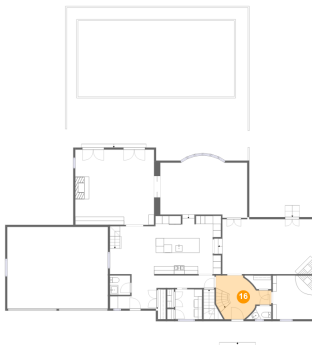
15 Floor 2 - Swimming Pool



Dimensions: 38'8" x 18'10"
Area: 729 sq. ft
Counted as living area: No

Heated: No
Finished: No
Enclosed: No
Contiguous: Yes
Permitted: No
Wet space: No
Addition: No
Conversion: No

16 Floor 2 - Foyer



Dimensions: 8'9" x 10'10"
Area: 106 sq. ft
Counted as living area: Yes

Heated: Yes
Finished: Yes
Enclosed: Yes
Contiguous: Yes
Permitted: Yes
Wet space: No
Addition: No
Conversion: No

17 Floor 2 - Deck



Dimensions: 45'3" x 37'11"
Area: 1651 sq. ft
Counted as living area: No

Heated: No
Finished: Yes
Enclosed: No
Contiguous: Yes
Permitted: Yes
Wet space: No
Addition: No
Conversion: No

25 Old Chester Road, Essex Fells, Essex County, New Jersey, United States, 07021

18 Floor 2 - Living Room



Dimensions: 24'6" x 13'7"
Area: 314 sq. ft
Counted as living area: Yes

Heated: Yes
Finished: Yes
Enclosed: Yes
Contiguous: Yes
Permitted: Yes
Wet space: No
Addition: No
Conversion: No

19 Floor 2 - Hall



Dimensions: 14'5" x 3'1"
Area: 44 sq. ft
Counted as living area: Yes

Heated: Yes
Finished: Yes
Enclosed: Yes
Contiguous: Yes
Permitted: Yes
Wet space: No
Addition: No
Conversion: No

20 Floor 2 - Laundry



Dimensions: 6'8" x 7'5"
Area: 50 sq. ft
Counted as living area: Yes

Heated: Yes
Finished: Yes
Enclosed: Yes
Contiguous: Yes
Permitted: Yes
Wet space: No
Addition: No
Conversion: No

25 Old Chester Road, Essex Fells, Essex County, New Jersey, United States, 07021

21 Floor 2 - Garage



Dimensions: 24'11" x 20'3"
Area: 505 sq. ft
Counted as living area: No

Heated: No
Finished: No
Enclosed: Yes
Contiguous: Yes
Permitted: Yes
Wet space: No
Addition: No
Conversion: No

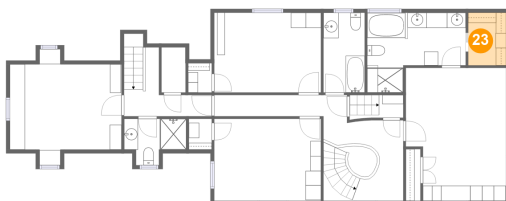
22 Floor 2 - Patio



Dimensions: 11'10" x 4'6"
Area: 53 sq. ft
Counted as living area: No

Heated: No
Finished: Yes
Enclosed: No
Contiguous: Yes
Permitted: Yes
Wet space: No
Addition: No
Conversion: No

23 Floor 3 - W.I.C.

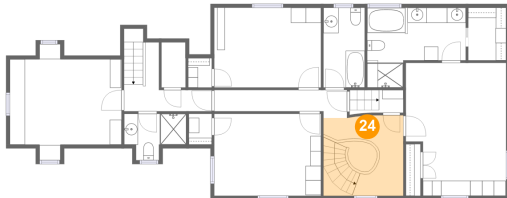


Dimensions: 5'0" x 6'11"
Area: 35 sq. ft
Counted as living area: Yes

Heated: Yes
Finished: Yes
Enclosed: Yes
Contiguous: Yes
Permitted: Yes
Wet space: No
Addition: No
Conversion: No

25 Old Chester Road, Essex Fells, Essex County, New Jersey, United States, 07021

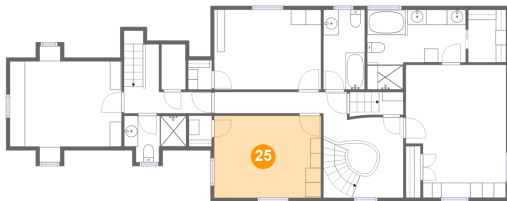
24 Floor 3 - Hall



Dimensions: 10'6" x 10'1"
Area: 110 sq. ft
Counted as living area: Yes

Heated: Yes
Finished: Yes
Enclosed: Yes
Contiguous: Yes
Permitted: Yes
Wet space: No
Addition: No
Conversion: No

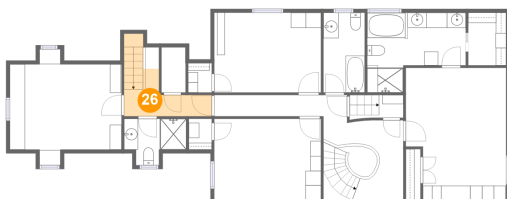
25 Floor 3 - Bedroom



Dimensions: 14'1" x 10'10"
Area: 152 sq. ft
Counted as living area: Yes

Heated: Yes
Finished: Yes
Enclosed: Yes
Contiguous: Yes
Permitted: Yes
Wet space: No
Addition: No
Conversion: No

26 Floor 3 - Hall

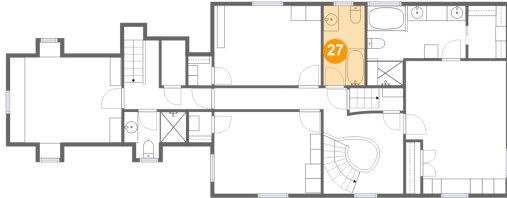


Dimensions: 11'7" x 9'1"
Area: 60 sq. ft
Counted as living area: Yes

Heated: Yes
Finished: Yes
Enclosed: Yes
Contiguous: Yes
Permitted: Yes
Wet space: No
Addition: No
Conversion: No

25 Old Chester Road, Essex Fells, Essex County, New Jersey, United States, 07021

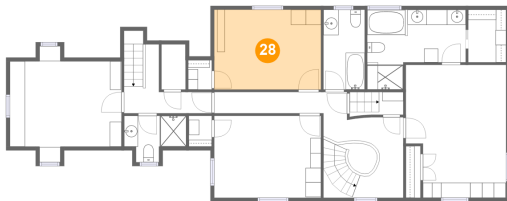
27 Floor 3 - Bath



Dimensions: 5'5" x 10'6"
Area: 57 sq. ft
Counted as living area: Yes

Heated: Yes
Finished: Yes
Enclosed: Yes
Contiguous: Yes
Permitted: Yes
Wet space: Yes
Addition: No
Conversion: No

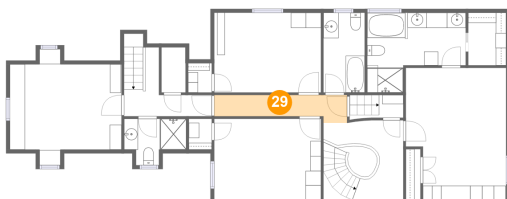
28 Floor 3 - Bedroom



Dimensions: 14'1" x 10'6"
Area: 148 sq. ft
Counted as living area: Yes

Heated: Yes
Finished: Yes
Enclosed: Yes
Contiguous: Yes
Permitted: Yes
Wet space: No
Addition: No
Conversion: No

29 Floor 3 - Hall

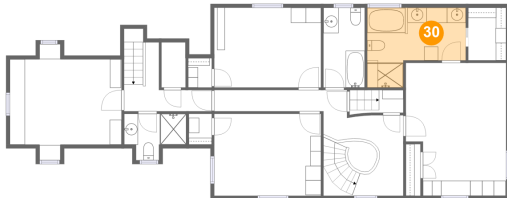


Dimensions: 17'6" x 3'8"
Area: 52 sq. ft
Counted as living area: Yes

Heated: Yes
Finished: Yes
Enclosed: Yes
Contiguous: Yes
Permitted: Yes
Wet space: No
Addition: No
Conversion: No

25 Old Chester Road, Essex Fells, Essex County, New Jersey, United States, 07021

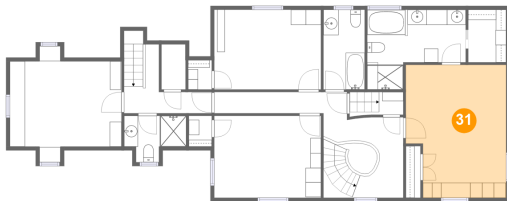
30 Floor 3 - Primary Bath



Dimensions: 13'0" x 10'6"
Area: 107 sq. ft
Counted as living area: Yes

Heated: Yes
Finished: Yes
Enclosed: Yes
Contiguous: Yes
Permitted: Yes
Wet space: Yes
Addition: No
Conversion: No

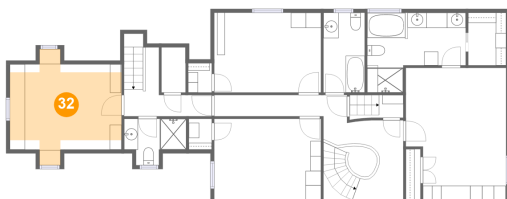
31 Floor 3 - Primary Bedroom



Dimensions: 13'2" x 17'6"
Area: 215 sq. ft
Counted as living area: Yes

Heated: Yes
Finished: Yes
Enclosed: Yes
Contiguous: Yes
Permitted: Yes
Wet space: No
Addition: No
Conversion: No

32 Floor 3 - Office / Bedroom

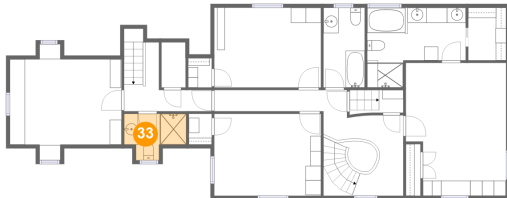


Dimensions: 14'9" x 15'4"
Area: 149 sq. ft
Counted as living area: Yes

Heated: Yes
Finished: Yes
Enclosed: Yes
Contiguous: Yes
Permitted: Yes
Wet space: No
Addition: No
Conversion: No

25 Old Chester Road, Essex Fells, Essex County, New Jersey, United States, 07021

33 Floor 3 - Bath



Dimensions: 8'3" x 6'1"
Area: 39 sq. ft
Counted as living area: Yes

Heated: Yes
Finished: Yes
Enclosed: Yes
Contiguous: Yes
Permitted: Yes
Wet space: Yes
Addition: No
Conversion: No

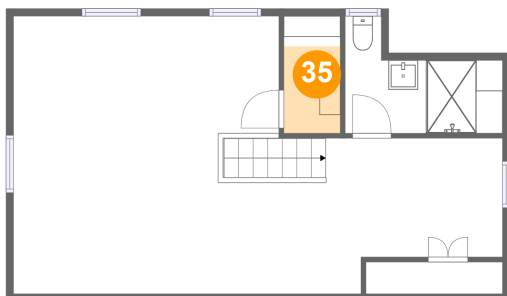
34 Floor 4 - Bonus Room / Bedroom



Dimensions: 33'3" x 18'10"
Area: 397 sq. ft
Counted as living area: Yes

Heated: Yes
Finished: Yes
Enclosed: Yes
Contiguous: Yes
Permitted: Yes
Wet space: No
Addition: No
Conversion: No

35 Floor 4 - W.I.C.

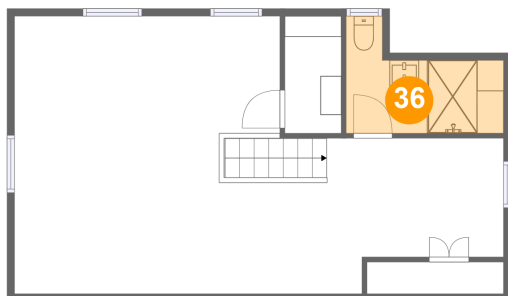


Dimensions: 3'10" x 7'11"
Area: 23 sq. ft
Counted as living area: Yes

Heated: Yes
Finished: Yes
Enclosed: Yes
Contiguous: Yes
Permitted: Yes
Wet space: No
Addition: No
Conversion: No

25 Old Chester Road, Essex Fells, Essex County, New Jersey, United States, 07021

36 Floor 4 - Bath



Dimensions: 10'8" x 7'11"
Area: 60 sq. ft
Counted as living area: Yes

Heated: Yes
Finished: Yes
Enclosed: Yes
Contiguous: Yes
Permitted: Yes
Wet space: Yes
Addition: No
Conversion: No