

Home report

29 Summit Street, West Franklin, Franklin, Merrimack County,  
New Hampshire, United States, 03235



Total Area: 2356 sq. ft

Below Ground: 316 sq. ft, Floor 2: 1175 sq. ft, Floor 3: 865 sq. ft, Floor 4: 0 sq. ft  
Excluded: Fireplace 12 sq. ft, Low Ceiling 219 sq. ft, Finished Attic 305 sq. ft

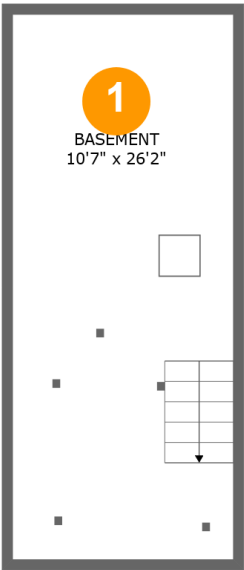
Property summary

 **4** Floors

 **3** Bedrooms

 **2** Bathrooms

29 Summit Street, West Franklin, Franklin, Merrimack County,  
New Hampshire, United States, 03235



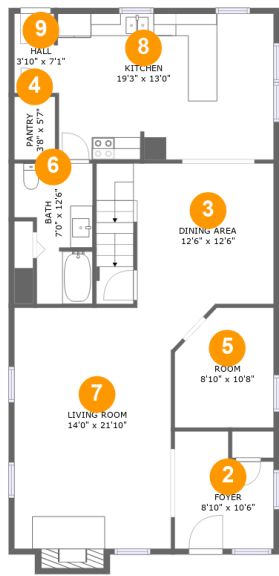
Room dimensions

Floor 1 Below ground Total:316sqft   Excluded: 0sqft

#		Max Dimensions	sqft	Included
1	Basement	10'7" x 26'2"	278 sq. ft	Yes

Home report

29 Summit Street, West Franklin, Franklin, Merrimack County,  
New Hampshire, United States, 03235



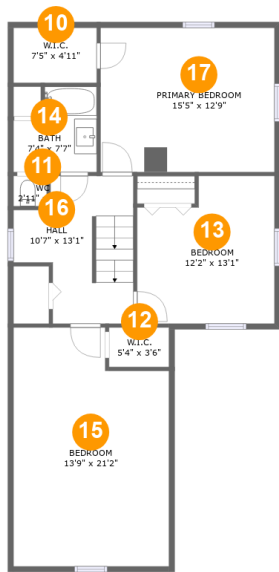
Room dimensions

Floor 2 Total:1175sqft Excluded: 12sqft

#		Max Dimensions	sqft	Included
2	Foyer	8'10" x 10'6"	81 sq. ft	Yes
3	Dining Area	12'6" x 12'6"	196 sq. ft	Yes
4	Pantry	3'8" x 5'7"	20 sq. ft	Yes
5	Room	8'10" x 10'8"	87 sq. ft	Yes
6	Bath	7'0" x 12'6"	71 sq. ft	Yes
7	Living Room	14'0" x 21'10"	319 sq. ft	Yes
8	Kitchen	19'3" x 13'0"	249 sq. ft	Yes
9	Hall	3'10" x 7'1"	26 sq. ft	Yes

Home report

29 Summit Street, West Franklin, Franklin, Merrimack County,  
New Hampshire, United States, 03235

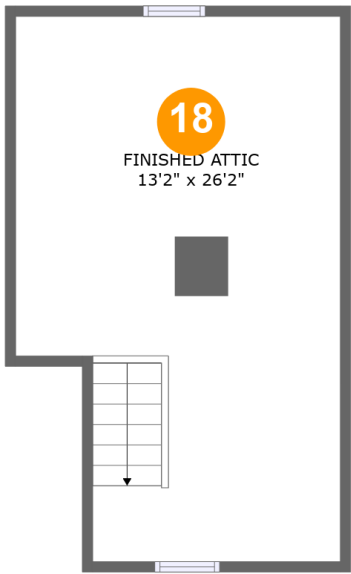


Room dimensions

Floor 3 Total:865sqft Excluded: 109sqft

#		Max Dimensions	sqft	Included
10	W.I.C.	7'5" x 4'11"	36 sq. ft	Yes
11	WC	2'11" x 2'8"	8 sq. ft	Yes
12	W.I.C.	5'4" x 3'6"	19 sq. ft	Yes
13	Bedroom	12'2" x 13'1"	144 sq. ft	Yes
14	Bath	7'4" x 7'7"	48 sq. ft	Yes
15	Bedroom	13'9" x 21'2"	183 sq. ft	Yes
16	Hall	10'7" x 13'1"	110 sq. ft	Yes
17	Primary Bedroom	15'5" x 12'9"	197 sq. ft	Yes

29 Summit Street, West Franklin, Franklin, Merrimack County,  
New Hampshire, United States, 03235



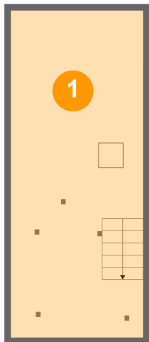
Room dimensions

Floor 4 Total:0sqft Excluded: 415sqft

#		Max Dimensions	sqft	Included
18	Finished Attic	13'2" x 26'2"	289 sq. ft	No

29 Summit Street, West Franklin, Franklin, Merrimack County,  
New Hampshire, United States, 03235

1 Floor 1 - Basement



Max Dimensions: 10'7" x 26'2"  
Calculated Area: 278 sq. ft  
Included: Yes

Heated: Yes  
Finished: Yes  
Enclosed: Yes  
Contiguous: Yes  
Permitted: Yes  
Wet space: No  
Addition: No  
Conversion: No

2 Floor 2 - Foyer



Max Dimensions: 8'10" x 10'6"  
Calculated Area: 81 sq. ft  
Included: Yes

Heated: Yes  
Finished: Yes  
Enclosed: Yes  
Contiguous: Yes  
Permitted: Yes  
Wet space: No  
Addition: No  
Conversion: No

29 Summit Street, West Franklin, Franklin, Merrimack County,  
New Hampshire, United States, 03235

3 Floor 2 - Dining Area



Max Dimensions: 12'6" x 12'6"  
Calculated Area: 196 sq. ft  
Included: Yes

Heated: Yes  
Finished: Yes  
Enclosed: Yes  
Contiguous: Yes  
Permitted: Yes  
Wet space: No  
Addition: No  
Conversion: No

4 Floor 2 - Pantry



Max Dimensions: 3'8" x 5'7"  
Calculated Area: 20 sq. ft  
Included: Yes

Heated: Yes  
Finished: Yes  
Enclosed: Yes  
Contiguous: Yes  
Permitted: Yes  
Wet space: No  
Addition: No  
Conversion: No

5 Floor 2 - Room



Max Dimensions: 8'10" x 10'8"  
Calculated Area: 87 sq. ft  
Included: Yes

Heated: Yes  
Finished: Yes  
Enclosed: Yes  
Contiguous: Yes  
Permitted: Yes  
Wet space: No  
Addition: No  
Conversion: No

29 Summit Street, West Franklin, Franklin, Merrimack County,  
New Hampshire, United States, 03235

6 Floor 2 - Bath



Max Dimensions: 7'0" x 12'6"  
Calculated Area: 71 sq. ft  
Included: Yes

Heated: Yes  
Finished: Yes  
Enclosed: Yes  
Contiguous: Yes  
Permitted: Yes  
Wet space: Yes  
Addition: No  
Conversion: No

7 Floor 2 - Living Room



Max Dimensions: 14'0" x 21'10"  
Calculated Area: 319 sq. ft  
Included: Yes

Heated: Yes  
Finished: Yes  
Enclosed: Yes  
Contiguous: Yes  
Permitted: Yes  
Wet space: No  
Addition: No  
Conversion: No

8 Floor 2 - Kitchen



Max Dimensions: 19'3" x 13'0"  
Calculated Area: 249 sq. ft  
Included: Yes

Heated: Yes  
Finished: Yes  
Enclosed: Yes  
Contiguous: Yes  
Permitted: Yes  
Wet space: No  
Addition: No  
Conversion: No



29 Summit Street, West Franklin, Franklin, Merrimack County,  
New Hampshire, United States, 03235

9 Floor 2 - Hall



Max Dimensions: 3'10" x 7'1"  
Calculated Area: 26 sq. ft  
Included: Yes

Heated: Yes  
Finished: Yes  
Enclosed: Yes  
Contiguous: Yes  
Permitted: Yes  
Wet space: No  
Addition: No  
Conversion: No

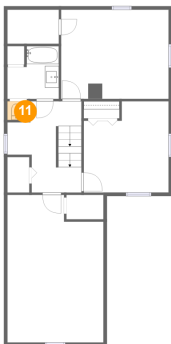
10 Floor 3 - W.I.C.



Max Dimensions: 7'5" x 4'11"  
Calculated Area: 36 sq. ft  
Included: Yes

Heated: Yes  
Finished: Yes  
Enclosed: Yes  
Contiguous: Yes  
Permitted: Yes  
Wet space: No  
Addition: No  
Conversion: No

11 Floor 3 - WC

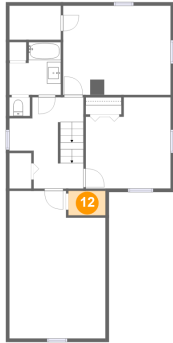


Max Dimensions: 2'11" x 2'8"  
Calculated Area: 8 sq. ft  
Included: Yes

Heated: Yes  
Finished: Yes  
Enclosed: Yes  
Contiguous: Yes  
Permitted: Yes  
Wet space: No  
Addition: No  
Conversion: No

29 Summit Street, West Franklin, Franklin, Merrimack County,  
New Hampshire, United States, 03235

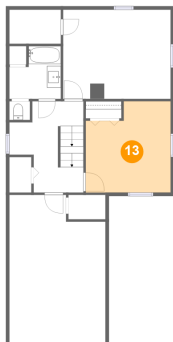
### 12 Floor 3 - W.I.C.



Max Dimensions: 5'4" x 3'6"  
Calculated Area: 19 sq. ft  
Included: Yes

Heated: Yes  
Finished: Yes  
Enclosed: Yes  
Contiguous: Yes  
Permitted: Yes  
Wet space: No  
Addition: No  
Conversion: No

### 13 Floor 3 - Bedroom



Max Dimensions: 12'2" x 13'1"  
Calculated Area: 144 sq. ft  
Included: Yes

Heated: Yes  
Finished: Yes  
Enclosed: Yes  
Contiguous: Yes  
Permitted: Yes  
Wet space: No  
Addition: No  
Conversion: No

### 14 Floor 3 - Bath



Max Dimensions: 7'4" x 7'7"  
Calculated Area: 48 sq. ft  
Included: Yes

Heated: Yes  
Finished: Yes  
Enclosed: Yes  
Contiguous: Yes  
Permitted: Yes  
Wet space: Yes  
Addition: No  
Conversion: No

29 Summit Street, West Franklin, Franklin, Merrimack County,  
New Hampshire, United States, 03235

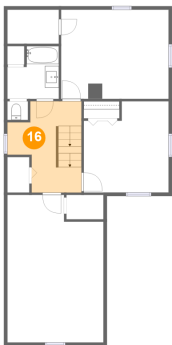
15 Floor 3 - Bedroom



Max Dimensions: 13'9" x 21'2"  
Calculated Area: 183 sq. ft  
Included: Yes

Heated: Yes  
Finished: Yes  
Enclosed: Yes  
Contiguous: Yes  
Permitted: Yes  
Wet space: No  
Addition: No  
Conversion: No

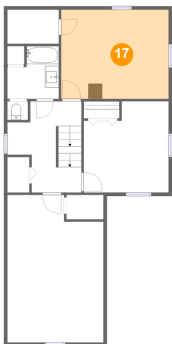
16 Floor 3 - Hall



Max Dimensions: 10'7" x 13'1"  
Calculated Area: 110 sq. ft  
Included: Yes

Heated: Yes  
Finished: Yes  
Enclosed: Yes  
Contiguous: Yes  
Permitted: Yes  
Wet space: No  
Addition: No  
Conversion: No

17 Floor 3 - Primary Bedroom

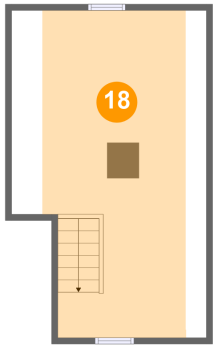


Max Dimensions: 15'5" x 12'9"  
Calculated Area: 197 sq. ft  
Included: Yes

Heated: Yes  
Finished: Yes  
Enclosed: Yes  
Contiguous: Yes  
Permitted: Yes  
Wet space: No  
Addition: No  
Conversion: No

29 Summit Street, West Franklin, Franklin, Merrimack County,  
New Hampshire, United States, 03235

**18** Floor 4 - Finished Attic



Max Dimensions: 13'2" x 26'2"  
Calculated Area: 289 sq. ft  
Included: No

Heated: No  
Finished: No  
Enclosed: Yes  
Contiguous: Yes  
Permitted: Yes  
Wet space: No  
Addition: No  
Conversion: No