


# Home report

## 79 Boxwood Ln, Daleville, Virginia, United States



## Property summary

 **1** Garages

 **4** Bedrooms

 **2** Bathrooms

 **1** Half baths

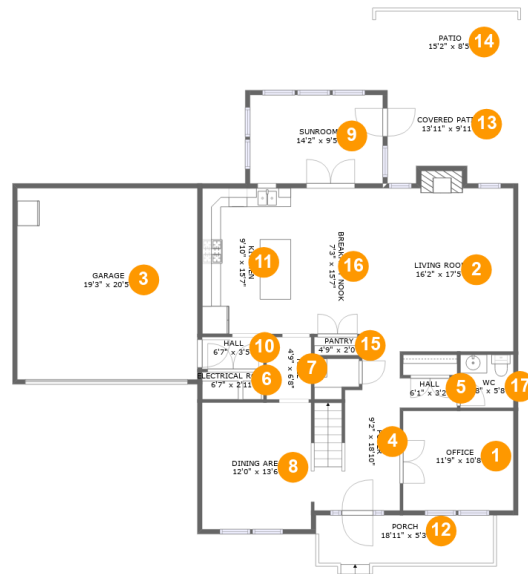
 **2** Floors

 **2,604** Gross living area sqft

 **3,413** Total sqft

Home report

79 Boxwood Ln, Daleville, Virginia, United States



## Room dimensions

Floor 1

Total sqft: 2176 Living area: 1367

#		Dimensions	sqft	Counted as living area
1	Office	11'9" x 10'8"	125 sq. ft	Yes
2	Living Room	16'2" x 17'5"	282 sq. ft	Yes
3	Garage	19'3" x 20'5"	392 sq. ft	No
4	Foyer	9'2" x 18'10"	136 sq. ft	Yes
5	Hall	6'1" x 3'2"	19 sq. ft	Yes
6	Electrical Room	6'7" x 2'11"	19 sq. ft	No
7	Hall	4'9" x 6'8"	32 sq. ft	Yes
8	Dining Area	12'0" x 13'6"	159 sq. ft	Yes
9	Sunroom	14'2" x 9'5"	134 sq. ft	Yes
10	Hall	6'7" x 3'5"	22 sq. ft	Yes
11	Kitchen	9'10" x 15'7"	154 sq. ft	Yes

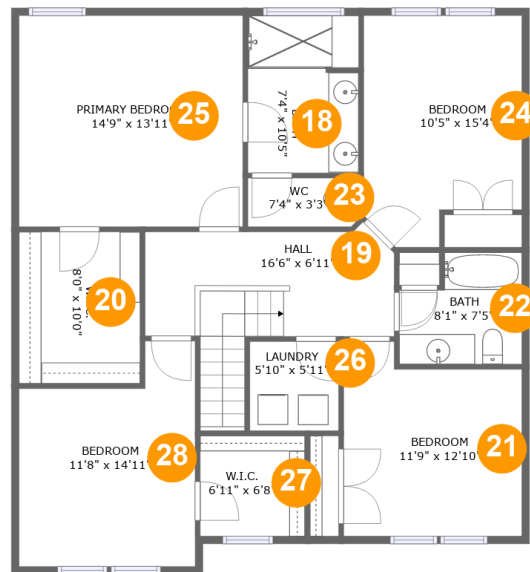
Home report

**79 Boxwood Ln,Daleville, Virginia,United States**

#		Dimensions	sqft	Counted as living area
12	Porch	18'11" x 5'3"	100 sq. ft	No
13	Covered Patio	13'11" x 9'11"	128 sq. ft	No
14	Patio	15'2" x 8'5"	128 sq. ft	No
15	Pantry	4'9" x 2'0"	9 sq. ft	Yes
16	Breakfast Nook	7'3" x 15'7"	113 sq. ft	Yes
17	WC	5'8" x 5'8"	32 sq. ft	Yes

Home report

79 Boxwood Ln, Daleville, Virginia, United States



## Room dimensions

Floor 2

Total sqft: 1237 Living area: 1237

#		Dimensions	sqft	Counted as living area
18	Bath	7'4" x 10'5"	75 sq. ft	Yes
19	Hall	16'6" x 6'11"	131 sq. ft	Yes
20	W.I.C.	8'0" x 10'0"	80 sq. ft	Yes
21	Bedroom	11'9" x 12'10"	136 sq. ft	Yes
22	Bath	8'1" x 7'5"	52 sq. ft	Yes
23	WC	7'4" x 3'3"	23 sq. ft	Yes
24	Bedroom	10'5" x 15'4"	144 sq. ft	Yes
25	Primary Bedroom	14'9" x 13'11"	206 sq. ft	Yes
26	Laundry	5'10" x 5'11"	35 sq. ft	Yes
27	W.I.C.	6'11" x 6'8"	46 sq. ft	Yes
28	Bedroom	11'8" x 14'11"	147 sq. ft	Yes

## 1 Floor 1 - Office

---

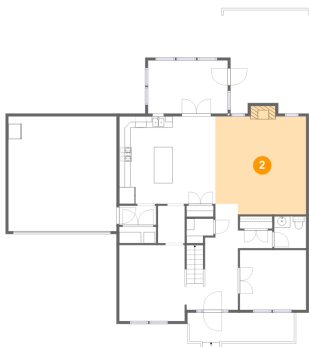


Dimensions: 11'9" x 10'8"  
Area: 125 sq. ft  
Counted as living area: Yes

Heated: Yes  
Finished: Yes  
Enclosed: Yes  
Contiguous: Yes  
Permitted: Yes  
Wet space: No  
Addition: No  
Conversion: No

## 2 Floor 1 - Living Room

---



Dimensions: 16'2" x 17'5"  
Area: 282 sq. ft  
Counted as living area: Yes

Heated: Yes  
Finished: Yes  
Enclosed: Yes  
Contiguous: Yes  
Permitted: Yes  
Wet space: No  
Addition: No  
Conversion: No

### 3 Floor 1 - Garage



Dimensions: 19'3" x 20'5"  
Area: 392 sq. ft  
Counted as living area: No

Heated: No  
Finished: No  
Enclosed: Yes  
Contiguous: Yes  
Permitted: Yes  
Wet space: No  
Addition: No  
Conversion: No

### 4 Floor 1 - Foyer



Dimensions: 9'2" x 18'10"  
Area: 136 sq. ft  
Counted as living area: Yes

Heated: Yes  
Finished: Yes  
Enclosed: Yes  
Contiguous: Yes  
Permitted: Yes  
Wet space: No  
Addition: No  
Conversion: No

### 5 Floor 1 - Hall



Dimensions: 6'1" x 3'2"  
Area: 19 sq. ft  
Counted as living area: Yes

Heated: Yes  
Finished: Yes  
Enclosed: Yes  
Contiguous: Yes  
Permitted: Yes  
Wet space: No  
Addition: No  
Conversion: No

## 6 Floor 1 - Electrical Room



Dimensions: 6'7" x 2'11"  
Area: 19 sq. ft  
Counted as living area: No

Heated: No  
Finished: No  
Enclosed: Yes  
Contiguous: Yes  
Permitted: Yes  
Wet space: No  
Addition: No  
Conversion: No

## 7 Floor 1 - Hall



Dimensions: 4'9" x 6'8"  
Area: 32 sq. ft  
Counted as living area: Yes

Heated: Yes  
Finished: Yes  
Enclosed: Yes  
Contiguous: Yes  
Permitted: Yes  
Wet space: No  
Addition: No  
Conversion: No

## 8 Floor 1 - Dining Area



Dimensions: 12'0" x 13'6"  
Area: 159 sq. ft  
Counted as living area: Yes

Heated: Yes  
Finished: Yes  
Enclosed: Yes  
Contiguous: Yes  
Permitted: Yes  
Wet space: No  
Addition: No  
Conversion: No

### 9 Floor 1 - Sunroom



Dimensions: 14'2" x 9'5"  
Area: 134 sq. ft  
Counted as living area: Yes

Heated: Yes  
Finished: Yes  
Enclosed: Yes  
Contiguous: Yes  
Permitted: Yes  
Wet space: No  
Addition: No  
Conversion: No

### 10 Floor 1 - Hall



Dimensions: 6'7" x 3'5"  
Area: 22 sq. ft  
Counted as living area: Yes

Heated: Yes  
Finished: Yes  
Enclosed: Yes  
Contiguous: Yes  
Permitted: Yes  
Wet space: No  
Addition: No  
Conversion: No

### 11 Floor 1 - Kitchen



Dimensions: 9'10" x 15'7"  
Area: 154 sq. ft  
Counted as living area: Yes

Heated: Yes  
Finished: Yes  
Enclosed: Yes  
Contiguous: Yes  
Permitted: Yes  
Wet space: No  
Addition: No  
Conversion: No



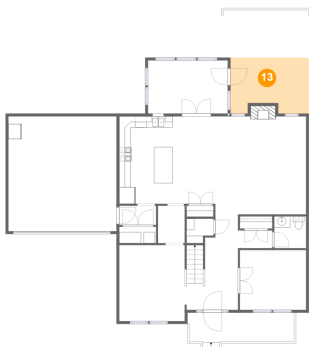
## 12 Floor 1 - Porch



Dimensions: 18'11" x 5'3"  
Area: 100 sq. ft  
Counted as living area: No

Heated: No  
Finished: Yes  
Enclosed: No  
Contiguous: Yes  
Permitted: Yes  
Wet space: No  
Addition: No  
Conversion: No

## 13 Floor 1 - Covered Patio



Dimensions: 13'11" x 9'11"  
Area: 128 sq. ft  
Counted as living area: No

Heated: No  
Finished: Yes  
Enclosed: No  
Contiguous: Yes  
Permitted: Yes  
Wet space: No  
Addition: No  
Conversion: No

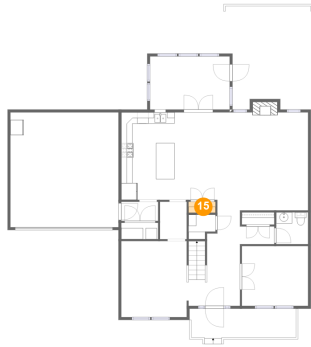
## 14 Floor 1 - Patio



Dimensions: 15'2" x 8'5"  
Area: 128 sq. ft  
Counted as living area: No

Heated: No  
Finished: Yes  
Enclosed: No  
Contiguous: Yes  
Permitted: Yes  
Wet space: No  
Addition: No  
Conversion: No

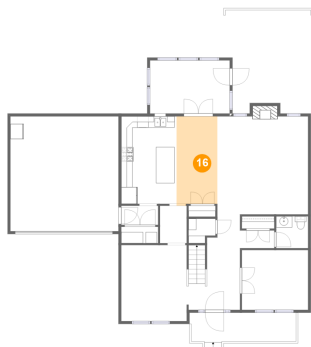
**15** Floor 1 - Pantry



Dimensions: 4'9" x 2'0"  
Area: 9 sq. ft  
Counted as living area: Yes

Heated: Yes  
Finished: Yes  
Enclosed: Yes  
Contiguous: Yes  
Permitted: Yes  
Wet space: No  
Addition: No  
Conversion: No

**16** Floor 1 - Breakfast Nook



Dimensions: 7'3" x 15'7"  
Area: 113 sq. ft  
Counted as living area: Yes

Heated: Yes  
Finished: Yes  
Enclosed: Yes  
Contiguous: Yes  
Permitted: Yes  
Wet space: No  
Addition: No  
Conversion: No

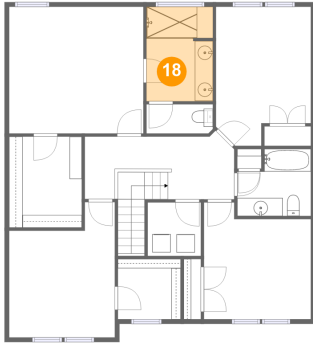
**17** Floor 1 - WC



Dimensions: 5'8" x 5'8"  
Area: 32 sq. ft  
Counted as living area: Yes

Heated: Yes  
Finished: Yes  
Enclosed: Yes  
Contiguous: Yes  
Permitted: Yes  
Wet space: Yes  
Addition: No  
Conversion: No

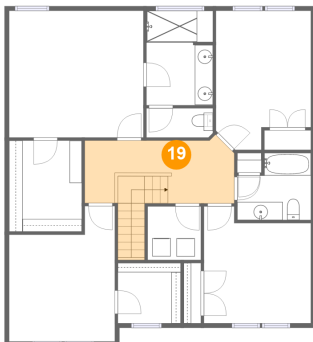
**18** Floor 2 - Bath



Dimensions: 7'4" x 10'5"  
Area: 75 sq. ft  
Counted as living area: Yes

Heated: Yes  
Finished: Yes  
Enclosed: Yes  
Contiguous: Yes  
Permitted: Yes  
Wet space: Yes  
Addition: No  
Conversion: No

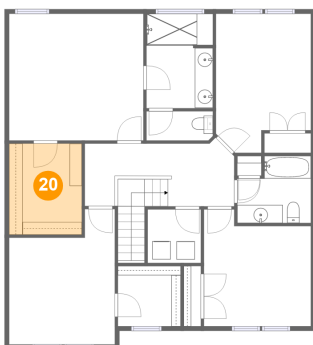
**19** Floor 2 - Hall



Dimensions: 16'6" x 6'11"  
Area: 131 sq. ft  
Counted as living area: Yes

Heated: Yes  
Finished: Yes  
Enclosed: Yes  
Contiguous: Yes  
Permitted: Yes  
Wet space: No  
Addition: No  
Conversion: No

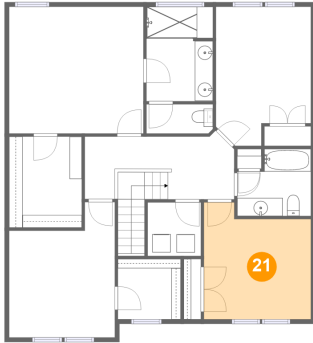
**20** Floor 2 - W.I.C.



Dimensions: 8'0" x 10'0"  
Area: 80 sq. ft  
Counted as living area: Yes

Heated: Yes  
Finished: Yes  
Enclosed: Yes  
Contiguous: Yes  
Permitted: Yes  
Wet space: No  
Addition: No  
Conversion: No

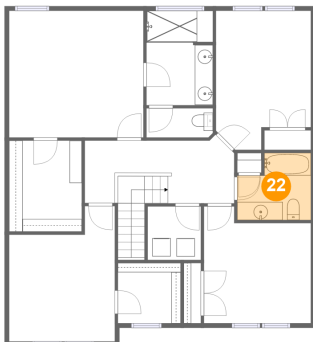
## 21 Floor 2 - Bedroom



Dimensions: 11'9" x 12'10"  
Area: 136 sq. ft  
Counted as living area: Yes

Heated: Yes  
Finished: Yes  
Enclosed: Yes  
Contiguous: Yes  
Permitted: Yes  
Wet space: No  
Addition: No  
Conversion: No

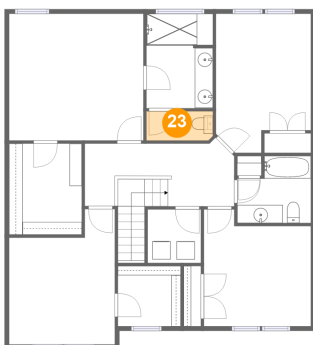
## 22 Floor 2 - Bath



Dimensions: 8'1" x 7'5"  
Area: 52 sq. ft  
Counted as living area: Yes

Heated: Yes  
Finished: Yes  
Enclosed: Yes  
Contiguous: Yes  
Permitted: Yes  
Wet space: Yes  
Addition: No  
Conversion: No

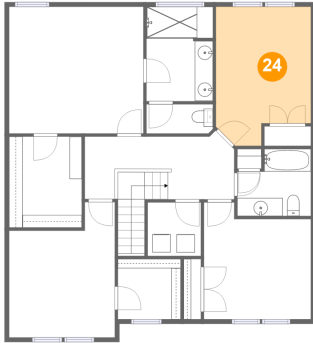
## 23 Floor 2 - WC



Dimensions: 7'4" x 3'3"  
Area: 23 sq. ft  
Counted as living area: Yes

Heated: Yes  
Finished: Yes  
Enclosed: Yes  
Contiguous: Yes  
Permitted: Yes  
Wet space: Yes  
Addition: No  
Conversion: No

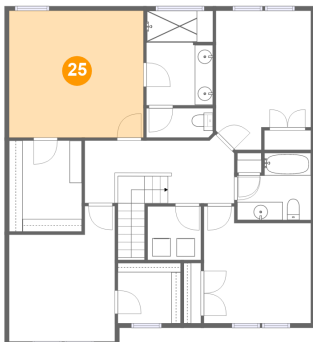
## 24 Floor 2 - Bedroom



Dimensions: 10'5" x 15'4"  
Area: 144 sq. ft  
Counted as living area: Yes

Heated: Yes  
Finished: Yes  
Enclosed: Yes  
Contiguous: Yes  
Permitted: Yes  
Wet space: No  
Addition: No  
Conversion: No

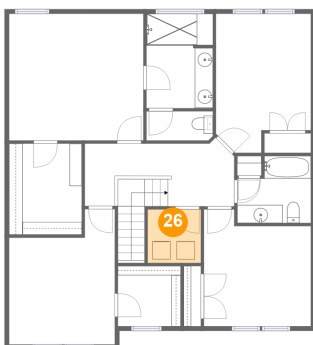
## 25 Floor 2 - Primary Bedroom



Dimensions: 14'9" x 13'11"  
Area: 206 sq. ft  
Counted as living area: Yes

Heated: Yes  
Finished: Yes  
Enclosed: Yes  
Contiguous: Yes  
Permitted: Yes  
Wet space: No  
Addition: No  
Conversion: No

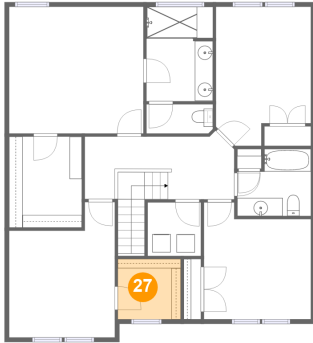
## 26 Floor 2 - Laundry



Dimensions: 5'10" x 5'11"  
Area: 35 sq. ft  
Counted as living area: Yes

Heated: Yes  
Finished: Yes  
Enclosed: Yes  
Contiguous: Yes  
Permitted: Yes  
Wet space: No  
Addition: No  
Conversion: No

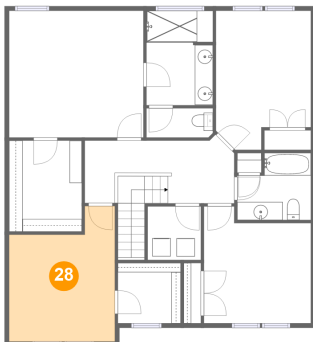
**27** Floor 2 - W.I.C.



Dimensions: 6'11" x 6'8"  
Area: 46 sq. ft  
Counted as living area: Yes

Heated: Yes  
Finished: Yes  
Enclosed: Yes  
Contiguous: Yes  
Permitted: Yes  
Wet space: No  
Addition: No  
Conversion: No

**28** Floor 2 - Bedroom



Dimensions: 11'8" x 14'11"  
Area: 147 sq. ft  
Counted as living area: Yes

Heated: Yes  
Finished: Yes  
Enclosed: Yes  
Contiguous: Yes  
Permitted: Yes  
Wet space: No  
Addition: No  
Conversion: No