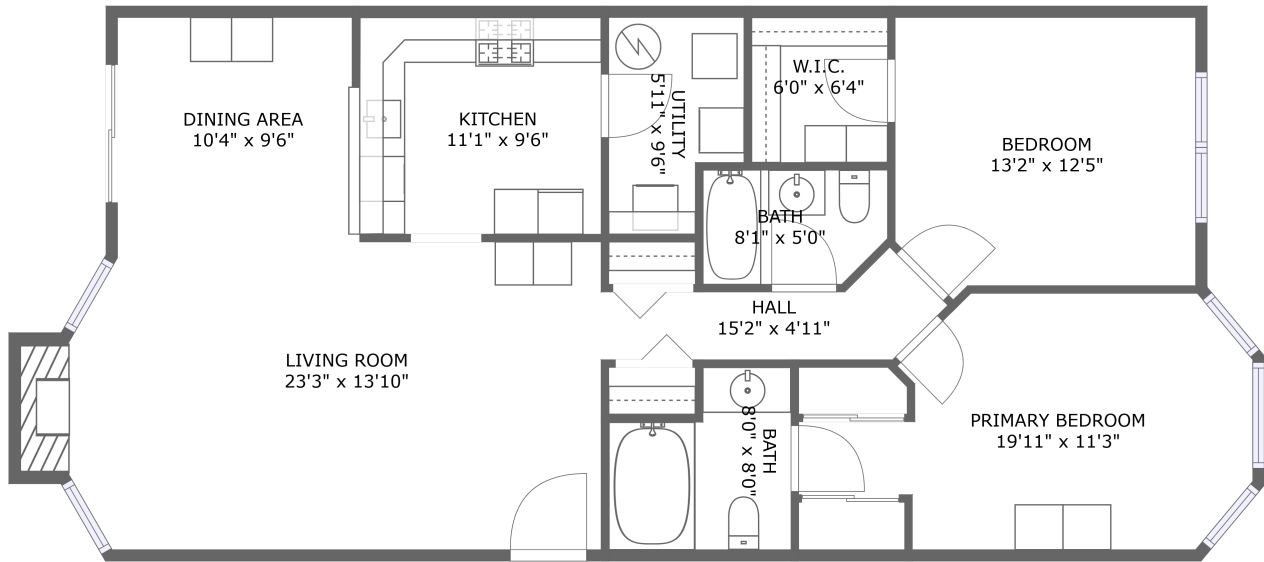



Home report


94 Quartz Lane, Stoney Road, Paterson, Passaic County, New Jersey, United States, 07501





FLOOR 1

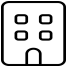
Property summary


**0** Garages


**2** Bedrooms

**2** Bathrooms

**0** Half baths

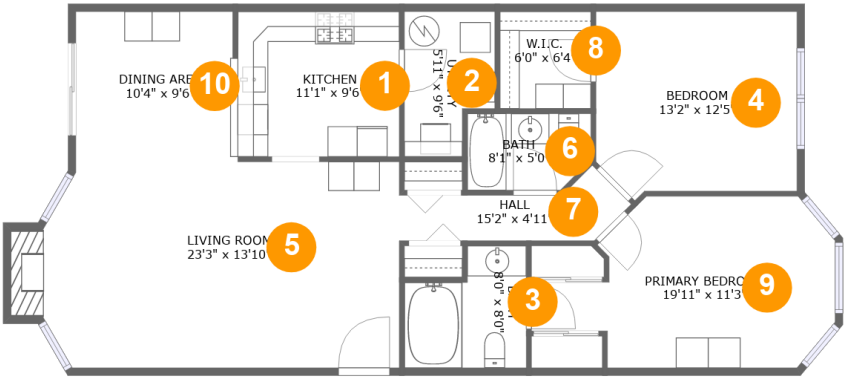
**1** Floors

**1,150** Gross living area sqft

**1,165** Total sqft

Home report

94 Quartz Lane, Stoney Road, Paterson, Passaic County, New Jersey, United States, 07501



Room dimensions

Floor 1 Total sqft: 1165 Living area: 1150

#		Dimensions	sqft	Counted as living area
1	Kitchen	11'1" x 9'6"	104 sq. ft	Yes
2	Utility	5'11" x 9'6"	50 sq. ft	Yes
3	Bath	8'0" x 8'0"	54 sq. ft	Yes
4	Bedroom	13'2" x 12'5"	154 sq. ft	Yes
5	Living Room	23'3" x 13'10"	323 sq. ft	Yes
6	Bath	8'1" x 5'0"	39 sq. ft	Yes
7	Hall	15'2" x 4'11"	46 sq. ft	Yes
8	W.I.C.	6'0" x 6'4"	38 sq. ft	Yes
9	Primary Bedroom	19'11" x 11'3"	174 sq. ft	Yes
10	Dining Area	10'4" x 9'6"	97 sq. ft	Yes

94 Quartz Lane, Stoney Road, Paterson, Passaic County, New Jersey, United States, 07501

1 Floor 1 - Kitchen



Dimensions: 11'1" x 9'6"
Area: 104 sq. ft
Counted as living area: Yes

Heated: Yes
Finished: Yes
Enclosed: Yes
Contiguous: Yes
Permitted: Yes
Wet space: No
Addition: No
Conversion: No

2 Floor 1 - Utility



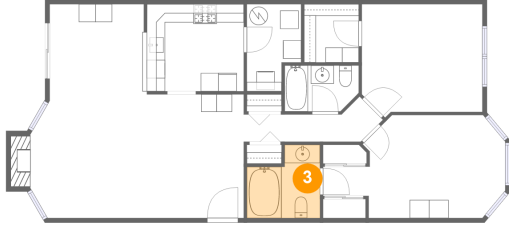
Dimensions: 5'11" x 9'6"
Area: 50 sq. ft
Counted as living area: Yes

Heated: Yes
Finished: Yes
Enclosed: Yes
Contiguous: Yes
Permitted: Yes
Wet space: No
Addition: No
Conversion: No

Home report

94 Quartz Lane, Stoney Road, Paterson, Passaic County, New Jersey, United States, 07501

3 Floor 1 - Bath



Dimensions: 8'0" x 8'0"
Area: 54 sq. ft
Counted as living area: Yes

Heated: Yes
Finished: Yes
Enclosed: Yes
Contiguous: Yes
Permitted: Yes
Wet space: Yes
Addition: No
Conversion: No

4 Floor 1 - Bedroom



Dimensions: 13'2" x 12'5"
Area: 154 sq. ft
Counted as living area: Yes

Heated: Yes
Finished: Yes
Enclosed: Yes
Contiguous: Yes
Permitted: Yes
Wet space: No
Addition: No
Conversion: No

5 Floor 1 - Living Room



Dimensions: 23'3" x 13'10"
Area: 323 sq. ft
Counted as living area: Yes

Heated: Yes
Finished: Yes
Enclosed: Yes
Contiguous: Yes
Permitted: Yes
Wet space: No
Addition: No
Conversion: No

Home report

94 Quartz Lane, Stoney Road, Paterson, Passaic County, New Jersey, United States, 07501

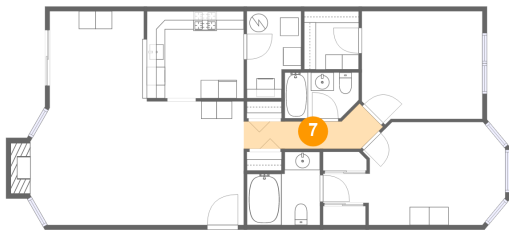
6 Floor 1 - Bath



Dimensions: 8'1" x 5'0"
Area: 39 sq. ft
Counted as living area: Yes

Heated: Yes
Finished: Yes
Enclosed: Yes
Contiguous: Yes
Permitted: Yes
Wet space: Yes
Addition: No
Conversion: No

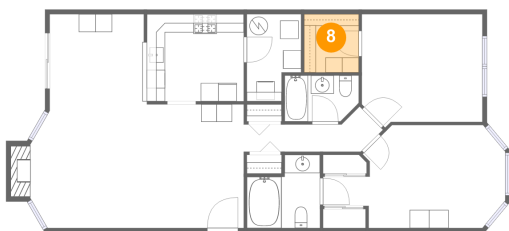
7 Floor 1 - Hall



Dimensions: 15'2" x 4'11"
Area: 46 sq. ft
Counted as living area: Yes

Heated: Yes
Finished: Yes
Enclosed: Yes
Contiguous: Yes
Permitted: Yes
Wet space: No
Addition: No
Conversion: No

8 Floor 1 - W.I.C.



Dimensions: 6'0" x 6'4"
Area: 38 sq. ft
Counted as living area: Yes

Heated: Yes
Finished: Yes
Enclosed: Yes
Contiguous: Yes
Permitted: Yes
Wet space: No
Addition: No
Conversion: No

94 Quartz Lane, Stoney Road, Paterson, Passaic County, New Jersey, United States, 07501

9 Floor 1 - Primary Bedroom



Dimensions: 19'11" x 11'3"
Area: 174 sq. ft
Counted as living area: Yes

Heated: Yes
Finished: Yes
Enclosed: Yes
Contiguous: Yes
Permitted: Yes
Wet space: No
Addition: No
Conversion: No

10 Floor 1 - Dining Area



Dimensions: 10'4" x 9'6"
Area: 97 sq. ft
Counted as living area: Yes

Heated: Yes
Finished: Yes
Enclosed: Yes
Contiguous: Yes
Permitted: Yes
Wet space: No
Addition: No
Conversion: No