

## Property summary



 **0** Half baths



**10,908**  
Total sqft

# 275 Dunham Place, Ridgewood Junction, Glen Rock, Bergen County, New Jersey, United States, 07452



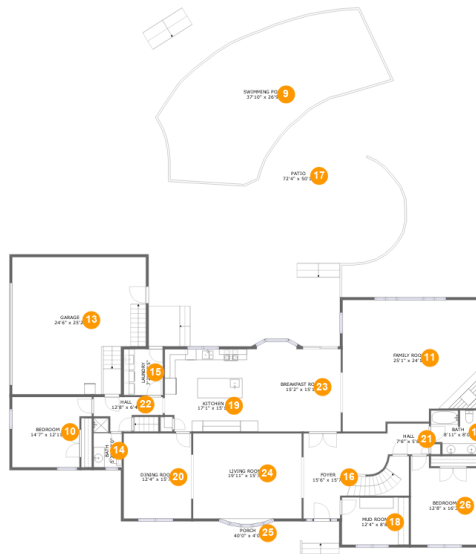
## Room dimensions

### Floor 1

Total sqft: 2629    Living area: 1858

#		Dimensions	sqft	Counted as living area
1	Hall	4'6" x 10'7"	45 sq. ft	Yes
2	Crawl Space	21'2" x 12'11"	274 sq. ft	No
3	Room	19'7" x 15'8"	275 sq. ft	No
4	Storage	11'8" x 21'6"	137 sq. ft	No
5	Bar	7'2" x 15'11"	110 sq. ft	Yes
6	Room	24'1" x 14'4"	285 sq. ft	Yes
7	Room	24'5" x 13'0"	312 sq. ft	Yes
8	Recreation Room	39'7" x 30'3"	939 sq. ft	Yes

# 275 Dunham Place, Ridgewood Junction, Glen Rock, Bergen County, New Jersey, United States, 07452



## Room dimensions

Floor 2

Total sqft: 5919    Living area: 2777

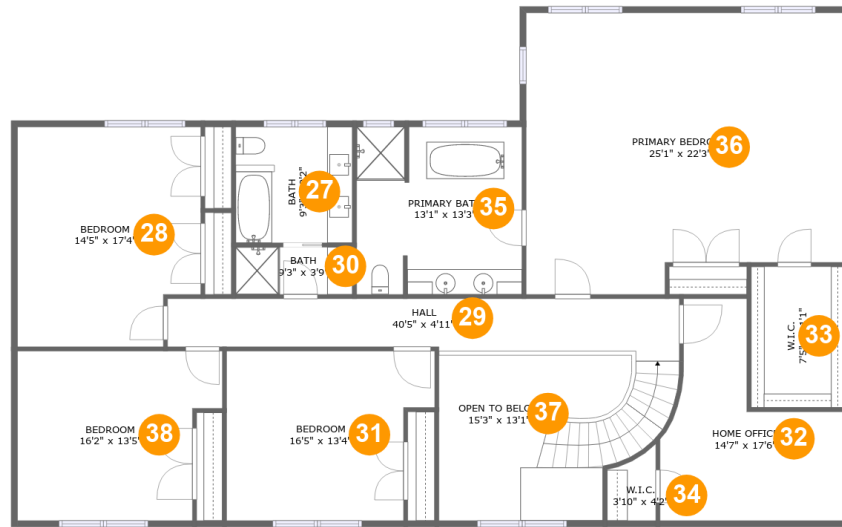
#		Dimensions	sqft	Counted as living area
9	Swimming Pool	37'10" x 26'9"	752 sq. ft	No
10	Bedroom	14'7" x 12'11"	167 sq. ft	Yes
11	Living Room	25'1" x 24'1"	553 sq. ft	Yes
12	Bath	8'11" x 8'0"	66 sq. ft	Yes
13	Garage	24'6" x 25'2"	577 sq. ft	No
14	Bath	5'2" x 9'0"	40 sq. ft	Yes
15	Utility	7'2" x 8'5"	61 sq. ft	Yes
16	Entry	15'6" x 15'7"	231 sq. ft	Yes
17	Outdoor	72'4" x 50'1"	3125 sq. ft	No
18	Mud Room	12'4" x 8'8"	106 sq. ft	Yes
19	Kitchen	17'1" x 15'1"	253 sq. ft	Yes

Scan captured on Wed, 15 Jan 2025 21:13:34 GMT

Information is calculated by Cubicasa technology deemed highly reliable but not guaranteed.

**275 Dunham Place, Ridgewood Junction, Glen Rock,  
Bergen County, New Jersey, United States, 07452**

#		Dimensions	sqft	Counted as living area
20	Dining Room	12'4" x 15'7"	194 sq. ft	Yes
21	Hall	7'6" x 5'8"	42 sq. ft	Yes
22	Hall	12'8" x 6'4"	55 sq. ft	Yes
23	Breakfast Room	15'2" x 15'1"	230 sq. ft	Yes
24	Living Room	19'11" x 15'7"	318 sq. ft	Yes
25	Outdoor	40'0" x 4'0"	159 sq. ft	No
26	Bedroom	12'8" x 16'3"	185 sq. ft	Yes

**275 Dunham Place, Ridgewood Junction, Glen Rock,  
Bergen County, New Jersey, United States, 07452****Room dimensions****Floor 3****Total sqft: 2360    Living area: 2225**

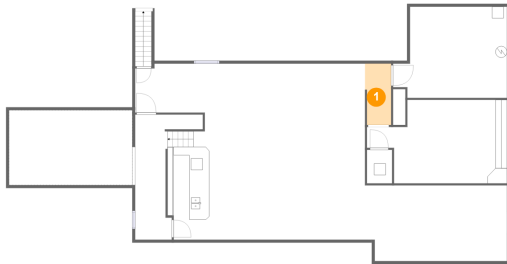
#		Dimensions	sqft	Counted as living area
27	Bath	9'3" x 9'2"	84 sq. ft	Yes
28	Bedroom	14'5" x 17'4"	239 sq. ft	Yes
29	Hall	40'5" x 4'11"	245 sq. ft	Yes
30	Bath	9'3" x 3'9"	34 sq. ft	Yes
31	Bedroom	16'5" x 13'4"	198 sq. ft	Yes
32	Home Office	14'7" x 17'6"	169 sq. ft	Yes
33	Cl	7'5" x 11'1"	82 sq. ft	Yes
34	Cl	3'10" x 4'2"	19 sq. ft	Yes
35	Bath	13'1" x 13'3"	170 sq. ft	Yes
36	Bedroom	25'1" x 22'3"	522 sq. ft	Yes
37	Open To Below	15'3" x 13'1"	132 sq. ft	No

**275 Dunham Place, Ridgewood Junction, Glen Rock,  
Bergen County, New Jersey, United States, 07452**

#		Dimensions	sqft	Counted as living area
38	Bedroom	16'2" x 13'5"	195 sq. ft	Yes

**275 Dunham Place, Ridgewood Junction, Glen Rock,  
Bergen County, New Jersey, United States, 07452**

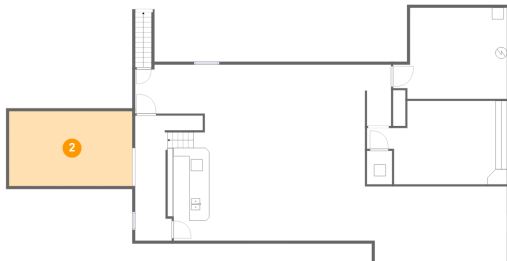
## 1 Floor 1 - Hall



**Dimensions:** 4'6" x 10'7"  
**Area:** 45 sq. ft  
**Counted as living area:** Yes

**Heated:** Yes  
**Finished:** Yes  
**Enclosed:** Yes  
**Contiguous:** Yes  
**Permitted:** Yes  
**Wet space:** No  
**Addition:** No  
**Conversion:** No

## 2 Floor 1 - Crawl Space

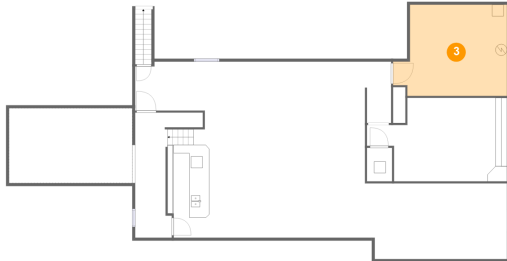


**Dimensions:** 21'2" x 12'11"  
**Area:** 274 sq. ft  
**Counted as living area:** No

**Heated:** No  
**Finished:** No  
**Enclosed:** No  
**Contiguous:** Yes  
**Permitted:** No  
**Wet space:** No  
**Addition:** No  
**Conversion:** No

275 Dunham Place, Ridgewood Junction, Glen Rock,  
Bergen County, New Jersey, United States, 07452

### 3 Floor 1 - Room



Dimensions: 19'7" x 15'8"  
Area: 275 sq. ft  
Counted as living area: No

Heated: No  
Finished: No  
Enclosed: Yes  
Contiguous: Yes  
Permitted: Yes  
Wet space: No  
Addition: No  
Conversion: No

### 4 Floor 1 - Storage



Dimensions: 11'8" x 21'6"  
Area: 137 sq. ft  
Counted as living area: No

Heated: No  
Finished: No  
Enclosed: No  
Contiguous: No  
Permitted: Yes  
Wet space: No  
Addition: No  
Conversion: No

### 5 Floor 1 - Bar

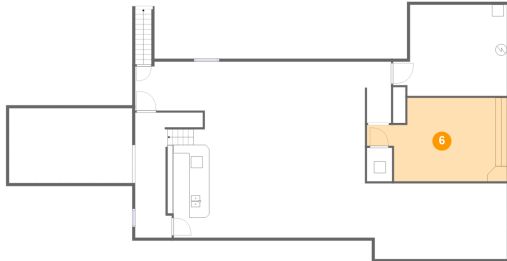


Dimensions: 7'2" x 15'11"  
Area: 110 sq. ft  
Counted as living area: Yes

Heated: Yes  
Finished: Yes  
Enclosed: Yes  
Contiguous: Yes  
Permitted: Yes  
Wet space: No  
Addition: No  
Conversion: No

275 Dunham Place, Ridgewood Junction, Glen Rock,  
Bergen County, New Jersey, United States, 07452

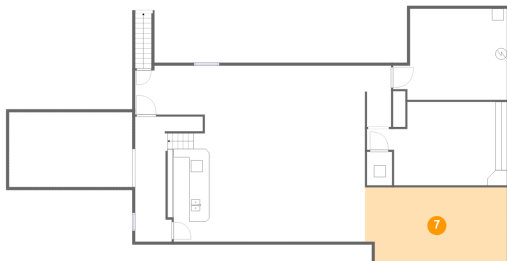
## 6 Floor 1 - Room



Dimensions: 24'1" x 14'4"  
Area: 285 sq. ft  
Counted as living area: Yes

Heated: Yes  
Finished: Yes  
Enclosed: Yes  
Contiguous: Yes  
Permitted: Yes  
Wet space: No  
Addition: No  
Conversion: No

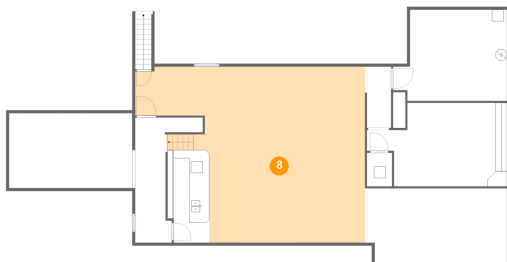
## 7 Floor 1 - Room



Dimensions: 24'5" x 13'0"  
Area: 312 sq. ft  
Counted as living area: Yes

Heated: Yes  
Finished: Yes  
Enclosed: Yes  
Contiguous: Yes  
Permitted: Yes  
Wet space: No  
Addition: No  
Conversion: No

## 8 Floor 1 - Recreation Room

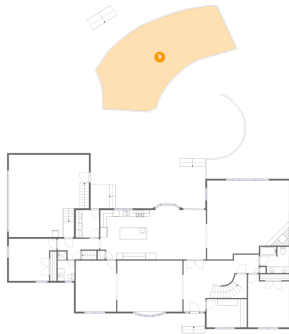


Dimensions: 39'7" x 30'3"  
Area: 939 sq. ft  
Counted as living area: Yes

Heated: Yes  
Finished: Yes  
Enclosed: Yes  
Contiguous: Yes  
Permitted: Yes  
Wet space: No  
Addition: No  
Conversion: No

**275 Dunham Place, Ridgewood Junction, Glen Rock,  
Bergen County, New Jersey, United States, 07452**

## 9 Floor 2 - Swimming Pool



**Dimensions:** 37'10" x 26'9"  
**Area:** 752 sq. ft  
**Counted as living area:** No

**Heated:** No  
**Finished:** No  
**Enclosed:** No  
**Contiguous:** Yes  
**Permitted:** No  
**Wet space:** No  
**Addition:** No  
**Conversion:** No

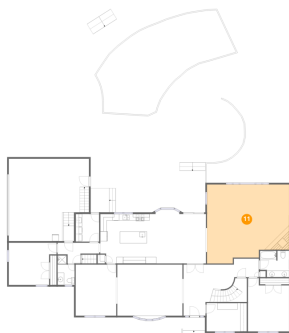
## 10 Floor 2 - Bedroom



**Dimensions:** 14'7" x 12'11"  
**Area:** 167 sq. ft  
**Counted as living area:** Yes

**Heated:** Yes  
**Finished:** Yes  
**Enclosed:** Yes  
**Contiguous:** Yes  
**Permitted:** Yes  
**Wet space:** No  
**Addition:** No  
**Conversion:** No

## 11 Floor 2 - Living Room

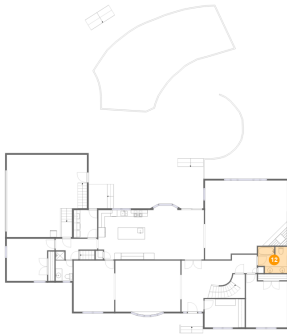


**Dimensions:** 25'1" x 24'1"  
**Area:** 553 sq. ft  
**Counted as living area:** Yes

**Heated:** Yes  
**Finished:** Yes  
**Enclosed:** Yes  
**Contiguous:** Yes  
**Permitted:** Yes  
**Wet space:** No  
**Addition:** No  
**Conversion:** No

275 Dunham Place, Ridgewood Junction, Glen Rock,  
Bergen County, New Jersey, United States, 07452

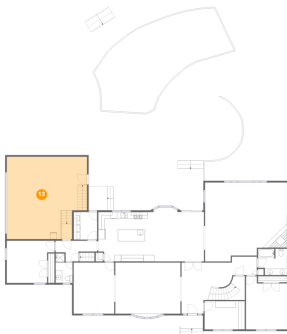
## 12 Floor 2 - Bath



Dimensions: 8'11" x 8'0"  
Area: 66 sq. ft  
Counted as living area: Yes

Heated: Yes  
Finished: Yes  
Enclosed: Yes  
Contiguous: Yes  
Permitted: Yes  
Wet space: Yes  
Addition: No  
Conversion: No

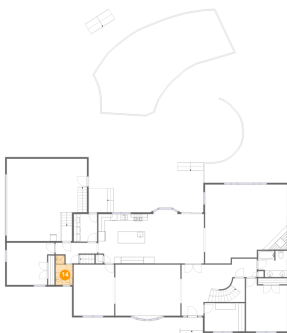
## 13 Floor 2 - Garage



Dimensions: 24'6" x 25'2"  
Area: 577 sq. ft  
Counted as living area: No

Heated: No  
Finished: No  
Enclosed: Yes  
Contiguous: Yes  
Permitted: Yes  
Wet space: No  
Addition: No  
Conversion: No

## 14 Floor 2 - Bath



Dimensions: 5'2" x 9'0"  
Area: 40 sq. ft  
Counted as living area: Yes

Heated: Yes  
Finished: Yes  
Enclosed: Yes  
Contiguous: Yes  
Permitted: Yes  
Wet space: Yes  
Addition: No  
Conversion: No

275 Dunham Place, Ridgewood Junction, Glen Rock,  
Bergen County, New Jersey, United States, 07452

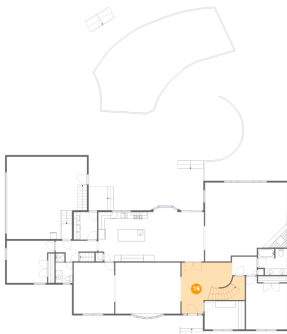
### 15 Floor 2 - Utility



Dimensions: 7'2" x 8'5"  
Area: 61 sq. ft  
Counted as living area: Yes

Heated: Yes  
Finished: Yes  
Enclosed: Yes  
Contiguous: Yes  
Permitted: Yes  
Wet space: No  
Addition: No  
Conversion: No

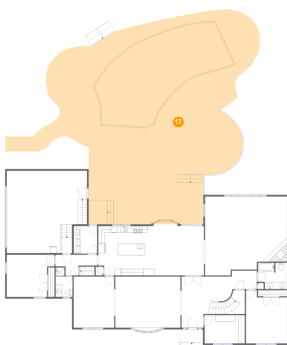
### 16 Floor 2 - Entry



Dimensions: 15'6" x 15'7"  
Area: 231 sq. ft  
Counted as living area: Yes

Heated: Yes  
Finished: Yes  
Enclosed: Yes  
Contiguous: Yes  
Permitted: Yes  
Wet space: No  
Addition: No  
Conversion: No

### 17 Floor 2 - Outdoor

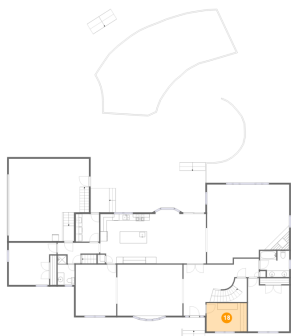


Dimensions: 72'4" x 50'1"  
Area: 3125 sq. ft  
Counted as living area: No

Heated: No  
Finished: Yes  
Enclosed: No  
Contiguous: Yes  
Permitted: Yes  
Wet space: No  
Addition: No  
Conversion: No

275 Dunham Place, Ridgewood Junction, Glen Rock,  
Bergen County, New Jersey, United States, 07452

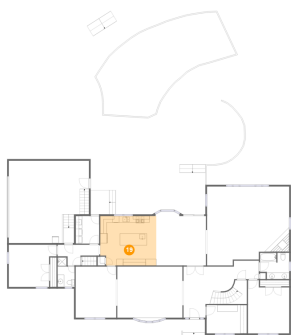
### 18 Floor 2 - Mud Room



Dimensions: 12'4" x 8'8"  
Area: 106 sq. ft  
Counted as living area: Yes

Heated: Yes  
Finished: Yes  
Enclosed: Yes  
Contiguous: Yes  
Permitted: Yes  
Wet space: No  
Addition: No  
Conversion: No

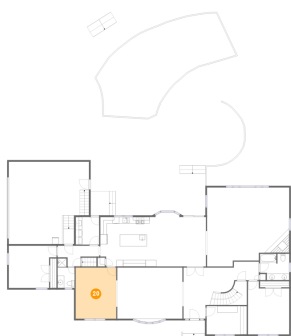
### 19 Floor 2 - Kitchen



Dimensions: 17'1" x 15'1"  
Area: 253 sq. ft  
Counted as living area: Yes

Heated: Yes  
Finished: Yes  
Enclosed: Yes  
Contiguous: Yes  
Permitted: Yes  
Wet space: No  
Addition: No  
Conversion: No

### 20 Floor 2 - Dining Room

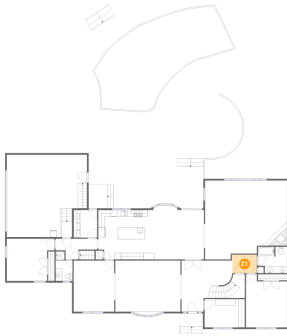


Dimensions: 12'4" x 15'7"  
Area: 194 sq. ft  
Counted as living area: Yes

Heated: Yes  
Finished: Yes  
Enclosed: Yes  
Contiguous: Yes  
Permitted: Yes  
Wet space: No  
Addition: No  
Conversion: No

275 Dunham Place, Ridgewood Junction, Glen Rock,  
Bergen County, New Jersey, United States, 07452

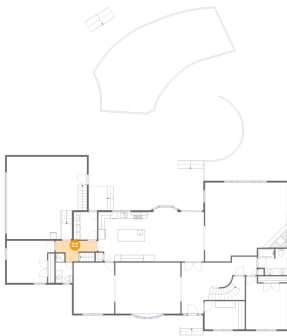
## 21 Floor 2 - Hall



Dimensions: 7'6" x 5'8"  
Area: 42 sq. ft  
Counted as living area: Yes

Heated: Yes  
Finished: Yes  
Enclosed: Yes  
Contiguous: Yes  
Permitted: Yes  
Wet space: No  
Addition: No  
Conversion: No

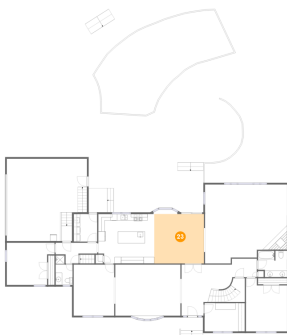
## 22 Floor 2 - Hall



Dimensions: 12'8" x 6'4"  
Area: 55 sq. ft  
Counted as living area: Yes

Heated: Yes  
Finished: Yes  
Enclosed: Yes  
Contiguous: Yes  
Permitted: Yes  
Wet space: No  
Addition: No  
Conversion: No

## 23 Floor 2 - Breakfast Room

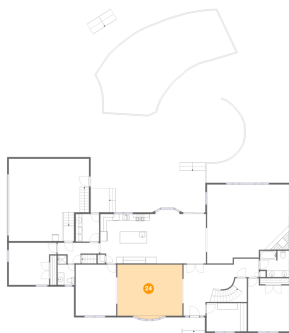


Dimensions: 15'2" x 15'1"  
Area: 230 sq. ft  
Counted as living area: Yes

Heated: Yes  
Finished: Yes  
Enclosed: Yes  
Contiguous: Yes  
Permitted: Yes  
Wet space: No  
Addition: No  
Conversion: No

275 Dunham Place, Ridgewood Junction, Glen Rock,  
Bergen County, New Jersey, United States, 07452

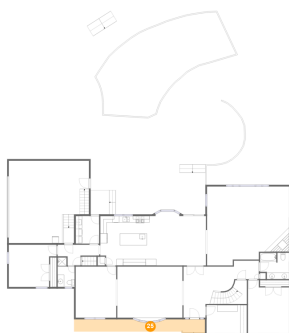
## 24 Floor 2 - Living Room



Dimensions: 19'11" x 15'7"  
Area: 318 sq. ft  
Counted as living area: Yes

Heated: Yes  
Finished: Yes  
Enclosed: Yes  
Contiguous: Yes  
Permitted: Yes  
Wet space: No  
Addition: No  
Conversion: No

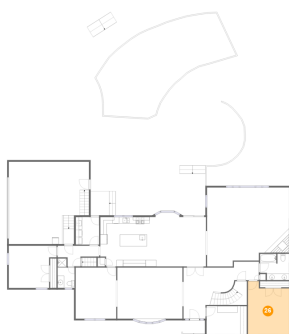
## 25 Floor 2 - Outdoor



Dimensions: 40'0" x 4'0"  
Area: 159 sq. ft  
Counted as living area: No

Heated: No  
Finished: Yes  
Enclosed: No  
Contiguous: Yes  
Permitted: Yes  
Wet space: No  
Addition: No  
Conversion: No

## 26 Floor 2 - Bedroom



Dimensions: 12'8" x 16'3"  
Area: 185 sq. ft  
Counted as living area: Yes

Heated: Yes  
Finished: Yes  
Enclosed: Yes  
Contiguous: Yes  
Permitted: Yes  
Wet space: No  
Addition: No  
Conversion: No

**275 Dunham Place, Ridgewood Junction, Glen Rock,  
Bergen County, New Jersey, United States, 07452**

### **27 Floor 3 - Bath**



Dimensions: 9'3" x 9'2"  
Area: 84 sq. ft  
Counted as living area: Yes

Heated: Yes  
Finished: Yes  
Enclosed: Yes  
Contiguous: Yes  
Permitted: Yes  
Wet space: Yes  
Addition: No  
Conversion: No

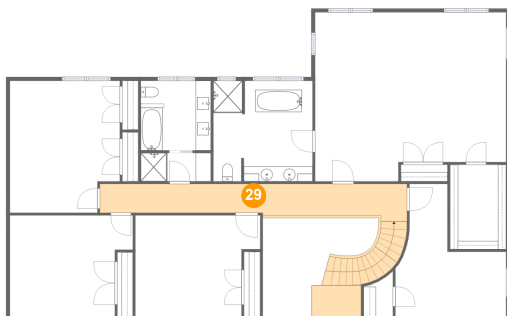
### **28 Floor 3 - Bedroom**



Dimensions: 14'5" x 17'4"  
Area: 239 sq. ft  
Counted as living area: Yes

Heated: Yes  
Finished: Yes  
Enclosed: Yes  
Contiguous: Yes  
Permitted: Yes  
Wet space: No  
Addition: No  
Conversion: No

### **29 Floor 3 - Hall**



Dimensions: 40'5" x 4'11"  
Area: 245 sq. ft  
Counted as living area: Yes

Heated: Yes  
Finished: Yes  
Enclosed: Yes  
Contiguous: Yes  
Permitted: Yes  
Wet space: No  
Addition: No  
Conversion: No

275 Dunham Place, Ridgewood Junction, Glen Rock,  
Bergen County, New Jersey, United States, 07452

### 30 Floor 3 - Bath



Dimensions: 9'3" x 3'9"  
Area: 34 sq. ft  
Counted as living area: Yes

Heated: Yes  
Finished: Yes  
Enclosed: Yes  
Contiguous: Yes  
Permitted: Yes  
Wet space: Yes  
Addition: No  
Conversion: No

### 31 Floor 3 - Bedroom



Dimensions: 16'5" x 13'4"  
Area: 198 sq. ft  
Counted as living area: Yes

Heated: Yes  
Finished: Yes  
Enclosed: Yes  
Contiguous: Yes  
Permitted: Yes  
Wet space: No  
Addition: No  
Conversion: No

### 32 Floor 3 - Home Office

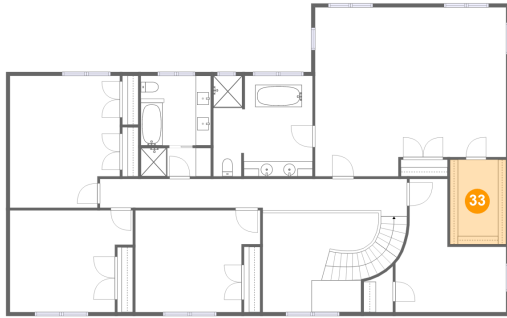


Dimensions: 14'7" x 17'6"  
Area: 169 sq. ft  
Counted as living area: Yes

Heated: Yes  
Finished: Yes  
Enclosed: Yes  
Contiguous: Yes  
Permitted: Yes  
Wet space: No  
Addition: No  
Conversion: No

275 Dunham Place, Ridgewood Junction, Glen Rock,  
Bergen County, New Jersey, United States, 07452

### 33 Floor 3 - Cl



Dimensions: 7'5" x 11'1"  
Area: 82 sq. ft  
Counted as living area: Yes

Heated: Yes  
Finished: Yes  
Enclosed: Yes  
Contiguous: Yes  
Permitted: Yes  
Wet space: No  
Addition: No  
Conversion: No

### 34 Floor 3 - Cl



Dimensions: 3'10" x 4'2"  
Area: 19 sq. ft  
Counted as living area: Yes

Heated: Yes  
Finished: Yes  
Enclosed: Yes  
Contiguous: Yes  
Permitted: Yes  
Wet space: No  
Addition: No  
Conversion: No

### 35 Floor 3 - Bath



Dimensions: 13'1" x 13'3"  
Area: 170 sq. ft  
Counted as living area: Yes

Heated: Yes  
Finished: Yes  
Enclosed: Yes  
Contiguous: Yes  
Permitted: Yes  
Wet space: Yes  
Addition: No  
Conversion: No

275 Dunham Place, Ridgewood Junction, Glen Rock,  
Bergen County, New Jersey, United States, 07452

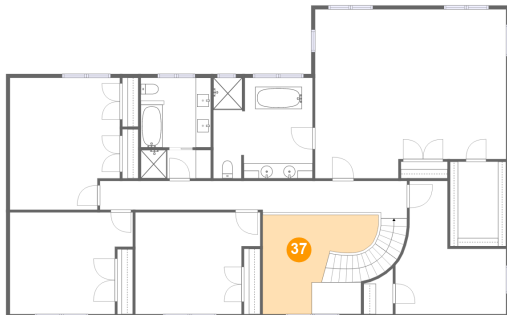
### 36 Floor 3 - Bedroom



Dimensions: 25'1" x 22'3"  
Area: 522 sq. ft  
Counted as living area: Yes

Heated: Yes  
Finished: Yes  
Enclosed: Yes  
Contiguous: Yes  
Permitted: Yes  
Wet space: No  
Addition: No  
Conversion: No

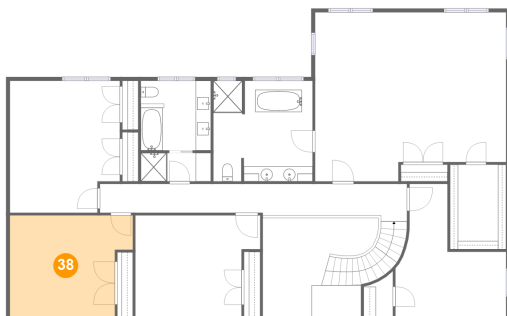
### 37 Floor 3 - Open To Below



Dimensions: 15'3" x 13'1"  
Area: 132 sq. ft  
Counted as living area: No

Heated: No  
Finished: No  
Enclosed: No  
Contiguous: Yes  
Permitted: No  
Wet space: No  
Addition: No  
Conversion: No

### 38 Floor 3 - Bedroom



Dimensions: 16'2" x 13'5"  
Area: 195 sq. ft  
Counted as living area: Yes

Heated: Yes  
Finished: Yes  
Enclosed: Yes  
Contiguous: Yes  
Permitted: Yes  
Wet space: No  
Addition: No  
Conversion: No