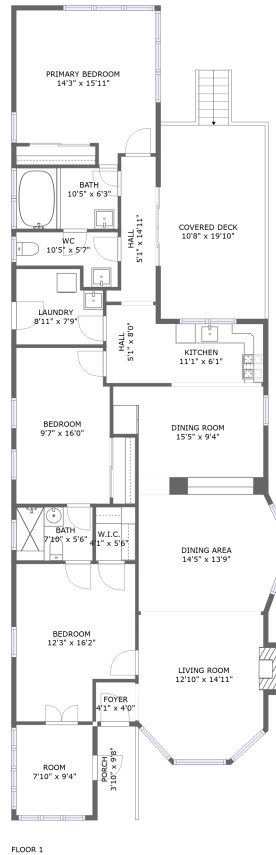


2216 Vestal Avenue, Elysian Heights, Los Angeles, Los Angeles County, California, United States, 90026



Property summary

 **0** Garages

 **3** Bedrooms

 **2** Bathrooms

 **0** Half baths

 **1** Floors

 **1,737** Gross living area sqft

 **1,995** Total sqft

2216 Vestal Avenue, Elysian Heights, Los Angeles, Los Angeles County, California, United States, 90026



Room dimensions

Floor 1

Total sqft: 1995 Living area: 1737

#		Dimensions	sqft	Counted as living area
1	Kitchen	11'1" x 6'1"	67 sq. ft	Yes
2	Hall	5'1" x 14'11"	55 sq. ft	Yes
3	Dining Area	14'5" x 13'9"	179 sq. ft	Yes
4	Laundry	8'11" x 7'9"	64 sq. ft	Yes
5	Bath	10'5" x 6'3"	65 sq. ft	Yes
6	Room	7'10" x 9'4"	73 sq. ft	Yes
7	W.I.C.	4'1" x 5'6"	22 sq. ft	Yes
8	WC	10'5" x 5'7"	44 sq. ft	Yes
9	Dining Room	15'5" x 9'4"	133 sq. ft	Yes
10	Bath	7'10" x 5'6"	43 sq. ft	Yes
11	Covered Deck	10'8" x 19'10"	213 sq. ft	No

**2216 Vestal Avenue, Elysian Heights, Los Angeles,
Los Angeles County, California, United States, 90026**

#		Dimensions	sqft	Counted as living area
12	Living Room	12'10" x 14'11"	185 sq. ft	Yes
13	Foyer	4'1" x 4'0"	16 sq. ft	Yes
14	Bedroom	12'3" x 16'2"	179 sq. ft	Yes
15	Bedroom	9'7" x 16'0"	151 sq. ft	Yes
16	Hall	5'1" x 8'0"	41 sq. ft	Yes
17	Primary Bedroom	14'3" x 15'11"	204 sq. ft	Yes
18	Porch	3'10" x 9'8"	37 sq. ft	No

2216 Vestal Avenue, Elysian Heights, Los Angeles, Los Angeles County, California, United States, 90026

1 Floor 1 - Kitchen



Dimensions: 11'1" x 6'1"
Area: 67 sq. ft
Counted as living area: Yes

Heated: Yes
Finished: Yes
Enclosed: Yes
Contiguous: Yes
Permitted: Yes
Wet space: No
Addition: No
Conversion: No

2 Floor 1 - Hall



Dimensions: 5'1" x 14'11"
Area: 55 sq. ft
Counted as living area: Yes

Heated: Yes
Finished: Yes
Enclosed: Yes
Contiguous: Yes
Permitted: Yes
Wet space: No
Addition: No
Conversion: No

2216 Vestal Avenue, Elysian Heights, Los Angeles, Los Angeles County, California, United States, 90026

3 Floor 1 - Dining Area



Dimensions: 14'5" x 13'9"
Area: 179 sq. ft
Counted as living area: Yes

Heated: Yes
Finished: Yes
Enclosed: Yes
Contiguous: Yes
Permitted: Yes
Wet space: No
Addition: No
Conversion: No

4 Floor 1 - Laundry



Dimensions: 8'11" x 7'9"
Area: 64 sq. ft
Counted as living area: Yes

Heated: Yes
Finished: Yes
Enclosed: Yes
Contiguous: Yes
Permitted: Yes
Wet space: No
Addition: No
Conversion: No

5 Floor 1 - Bath



Dimensions: 10'5" x 6'3"
Area: 65 sq. ft
Counted as living area: Yes

Heated: Yes
Finished: Yes
Enclosed: Yes
Contiguous: Yes
Permitted: Yes
Wet space: Yes
Addition: No
Conversion: No

2216 Vestal Avenue, Elysian Heights, Los Angeles,
Los Angeles County, California, United States, 90026

6 Floor 1 - Room



Dimensions: 7'10" x 9'4"
Area: 73 sq. ft
Counted as living area: Yes

Heated: Yes
Finished: Yes
Enclosed: Yes
Contiguous: Yes
Permitted: Yes
Wet space: No
Addition: No
Conversion: No

7 Floor 1 - W.I.C.



Dimensions: 4'1" x 5'6"
Area: 22 sq. ft
Counted as living area: Yes

Heated: Yes
Finished: Yes
Enclosed: Yes
Contiguous: Yes
Permitted: Yes
Wet space: No
Addition: No
Conversion: No

8 Floor 1 - WC



Dimensions: 10'5" x 5'7"
Area: 44 sq. ft
Counted as living area: Yes

Heated: Yes
Finished: Yes
Enclosed: Yes
Contiguous: Yes
Permitted: Yes
Wet space: No
Addition: No
Conversion: No

**2216 Vestal Avenue, Elysian Heights, Los Angeles,
Los Angeles County, California, United States, 90026**

9 Floor 1 - Dining Room



Dimensions: 15'5" x 9'4"
Area: 133 sq. ft
Counted as living area: Yes

Heated: Yes
Finished: Yes
Enclosed: Yes
Contiguous: Yes
Permitted: Yes
Wet space: No
Addition: No
Conversion: No

10 Floor 1 - Bath



Dimensions: 7'10" x 5'6"
Area: 43 sq. ft
Counted as living area: Yes

Heated: Yes
Finished: Yes
Enclosed: Yes
Contiguous: Yes
Permitted: Yes
Wet space: Yes
Addition: No
Conversion: No

11 Floor 1 - Covered Deck



Dimensions: 10'8" x 19'10"
Area: 213 sq. ft
Counted as living area: No

Heated: No
Finished: Yes
Enclosed: No
Contiguous: Yes
Permitted: Yes
Wet space: No
Addition: No
Conversion: No

2216 Vestal Avenue, Elysian Heights, Los Angeles, Los Angeles County, California, United States, 90026

12 Floor 1 - Living Room



Dimensions: 12'10" x 14'11"
Area: 185 sq. ft
Counted as living area: Yes

Heated: Yes
Finished: Yes
Enclosed: Yes
Contiguous: Yes
Permitted: Yes
Wet space: No
Addition: No
Conversion: No

13 Floor 1 - Foyer



Dimensions: 4'1" x 4'0"
Area: 16 sq. ft
Counted as living area: Yes

Heated: Yes
Finished: Yes
Enclosed: Yes
Contiguous: Yes
Permitted: Yes
Wet space: No
Addition: No
Conversion: No

14 Floor 1 - Bedroom



Dimensions: 12'3" x 16'2"
Area: 179 sq. ft
Counted as living area: Yes

Heated: Yes
Finished: Yes
Enclosed: Yes
Contiguous: Yes
Permitted: Yes
Wet space: No
Addition: No
Conversion: No

2216 Vestal Avenue, Elysian Heights, Los Angeles, Los Angeles County, California, United States, 90026

15 Floor 1 - Bedroom



Dimensions: 9'7" x 16'0"
Area: 151 sq. ft
Counted as living area: Yes

Heated: Yes
Finished: Yes
Enclosed: Yes
Contiguous: Yes
Permitted: Yes
Wet space: No
Addition: No
Conversion: No

16 Floor 1 - Hall



Dimensions: 5'1" x 8'0"
Area: 41 sq. ft
Counted as living area: Yes

Heated: Yes
Finished: Yes
Enclosed: Yes
Contiguous: Yes
Permitted: Yes
Wet space: No
Addition: No
Conversion: No

17 Floor 1 - Primary Bedroom



Dimensions: 14'3" x 15'11"
Area: 204 sq. ft
Counted as living area: Yes

Heated: Yes
Finished: Yes
Enclosed: Yes
Contiguous: Yes
Permitted: Yes
Wet space: No
Addition: No
Conversion: No

**2216 Vestal Avenue, Elysian Heights, Los Angeles,
Los Angeles County, California, United States, 90026**

18 Floor 1 - Porch



Dimensions: 3'10" x 9'8"
Area: 37 sq. ft
Counted as living area: No

Heated: No
Finished: Yes
Enclosed: No
Contiguous: Yes
Permitted: Yes
Wet space: No
Addition: No
Conversion: No