

Home report

1080 Cerro Vista Drive, Applegate, Placer County, California,  
United States, 95703



Total Area: 1666 sq. ft

Floor 1: 1666 sq. ft


Excluded: Garage 495 sq. ft, Porch 227 sq. ft, Deck 178 sq. ft, Fireplace 18 sq. ft, Walls: 120 sq. ft

Property summary

 **1** Floors

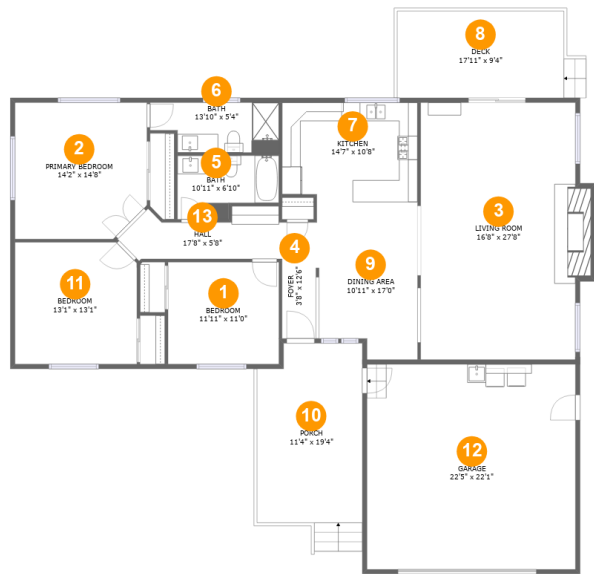
 **3** Bedrooms

 **2** Bathrooms

 **1** Garages

Home report

1080 Cerro Vista Drive, Applegate, Placer County, California,  
United States, 95703



Room dimensions

Floor 1 Total:1666sqft Excluded: 918sqft

#		Max Dimensions	sqft	Included
1	Bedroom	11'11" x 11'0"	131 sq. ft	Yes
2	Primary Bedroom	14'2" x 14'8"	202 sq. ft	Yes
3	Living Room	16'8" x 27'8"	477 sq. ft	Yes
4	Foyer	3'8" x 12'6"	46 sq. ft	Yes
5	Bath	10'11" x 6'10"	65 sq. ft	Yes
6	Bath	13'10" x 5'4"	67 sq. ft	Yes
7	Kitchen	14'7" x 10'8"	153 sq. ft	Yes
8	Deck	17'11" x 9'4"	178 sq. ft	No
9	Dining Area	10'11" x 17'0"	175 sq. ft	Yes
10	Porch	11'4" x 19'4"	227 sq. ft	No
11	Bedroom	13'1" x 13'1"	170 sq. ft	Yes

Home report

1080 Cerro Vista Drive, Applegate, Placer County, California,  
United States, 95703

#		Max Dimensions	sqft	Included
12	Garage	22'5" x 22'1"	495 sq. ft	No
13	Hall	17'8" x 5'8"	77 sq. ft	Yes

1080 Cerro Vista Drive, Applegate, Placer County, California,  
United States, 95703

1 Floor 1 - Bedroom



Max Dimensions: 11'11" x 11'0"  
Calculated Area: 131 sq. ft  
Included: Yes

Heated: Yes  
Finished: Yes  
Enclosed: Yes  
Contiguous: Yes  
Permitted: Yes  
Wet space: No  
Addition: No  
Conversion: No

2 Floor 1 - Primary Bedroom



Max Dimensions: 14'2" x 14'8"  
Calculated Area: 202 sq. ft  
Included: Yes

Heated: Yes  
Finished: Yes  
Enclosed: Yes  
Contiguous: Yes  
Permitted: Yes  
Wet space: No  
Addition: No  
Conversion: No

1080 Cerro Vista Drive, Applegate, Placer County, California,  
United States, 95703

3 Floor 1 - Living Room



Max Dimensions: 16'8" x 27'8"  
Calculated Area: 477 sq. ft  
Included: Yes

Heated: Yes  
Finished: Yes  
Enclosed: Yes  
Contiguous: Yes  
Permitted: Yes  
Wet space: No  
Addition: No  
Conversion: No

4 Floor 1 - Foyer



Max Dimensions: 3'8" x 12'6"  
Calculated Area: 46 sq. ft  
Included: Yes

Heated: Yes  
Finished: Yes  
Enclosed: Yes  
Contiguous: Yes  
Permitted: Yes  
Wet space: No  
Addition: No  
Conversion: No

5 Floor 1 - Bath



Max Dimensions: 10'11" x 6'10"  
Calculated Area: 65 sq. ft  
Included: Yes

Heated: Yes  
Finished: Yes  
Enclosed: Yes  
Contiguous: Yes  
Permitted: Yes  
Wet space: Yes  
Addition: No  
Conversion: No

1080 Cerro Vista Drive, Applegate, Placer County, California,  
United States, 95703

## 6 Floor 1 - Bath



Max Dimensions: 13'10" x 5'4"  
Calculated Area: 67 sq. ft  
Included: Yes

Heated: Yes  
Finished: Yes  
Enclosed: Yes  
Contiguous: Yes  
Permitted: Yes  
Wet space: Yes  
Addition: No  
Conversion: No

## 7 Floor 1 - Kitchen



Max Dimensions: 14'7" x 10'8"  
Calculated Area: 153 sq. ft  
Included: Yes

Heated: Yes  
Finished: Yes  
Enclosed: Yes  
Contiguous: Yes  
Permitted: Yes  
Wet space: No  
Addition: No  
Conversion: No

## 8 Floor 1 - Deck

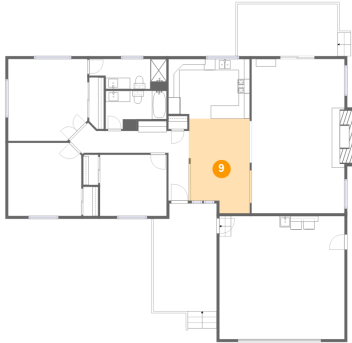


Max Dimensions: 17'11" x 9'4"  
Calculated Area: 178 sq. ft  
Included: No

Heated: No  
Finished: Yes  
Enclosed: No  
Contiguous: Yes  
Permitted: Yes  
Wet space: No  
Addition: No  
Conversion: No

1080 Cerro Vista Drive, Applegate, Placer County, California,  
United States, 95703

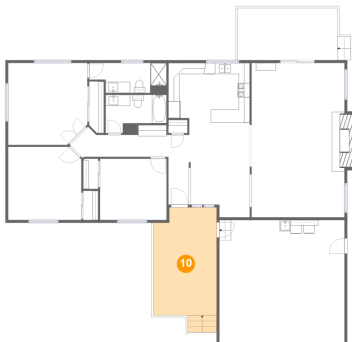
## 9 Floor 1 - Dining Area



Max Dimensions: 10'11" x 17'0"  
Calculated Area: 175 sq. ft  
Included: Yes

Heated: Yes  
Finished: Yes  
Enclosed: Yes  
Contiguous: Yes  
Permitted: Yes  
Wet space: No  
Addition: No  
Conversion: No

## 10 Floor 1 - Porch



Max Dimensions: 11'4" x 19'4"  
Calculated Area: 227 sq. ft  
Included: No

Heated: No  
Finished: Yes  
Enclosed: No  
Contiguous: Yes  
Permitted: Yes  
Wet space: No  
Addition: No  
Conversion: No

## 11 Floor 1 - Bedroom



Max Dimensions: 13'1" x 13'1"  
Calculated Area: 170 sq. ft  
Included: Yes

Heated: Yes  
Finished: Yes  
Enclosed: Yes  
Contiguous: Yes  
Permitted: Yes  
Wet space: No  
Addition: No  
Conversion: No

1080 Cerro Vista Drive, Applegate, Placer County, California,  
United States, 95703

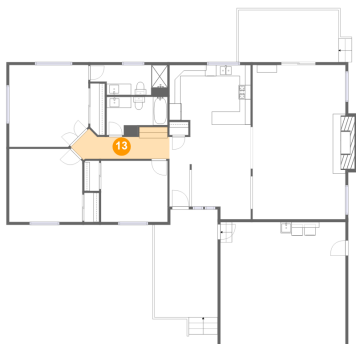
12 Floor 1 - Garage



Max Dimensions: 22'5" x 22'1"  
Calculated Area: 495 sq. ft  
Included: No

Heated: No  
Finished: No  
Enclosed: Yes  
Contiguous: Yes  
Permitted: Yes  
Wet space: No  
Addition: No  
Conversion: No

13 Floor 1 - Hall



Max Dimensions: 17'8" x 5'8"  
Calculated Area: 77 sq. ft  
Included: Yes

Heated: Yes  
Finished: Yes  
Enclosed: Yes  
Contiguous: Yes  
Permitted: Yes  
Wet space: No  
Addition: No  
Conversion: No