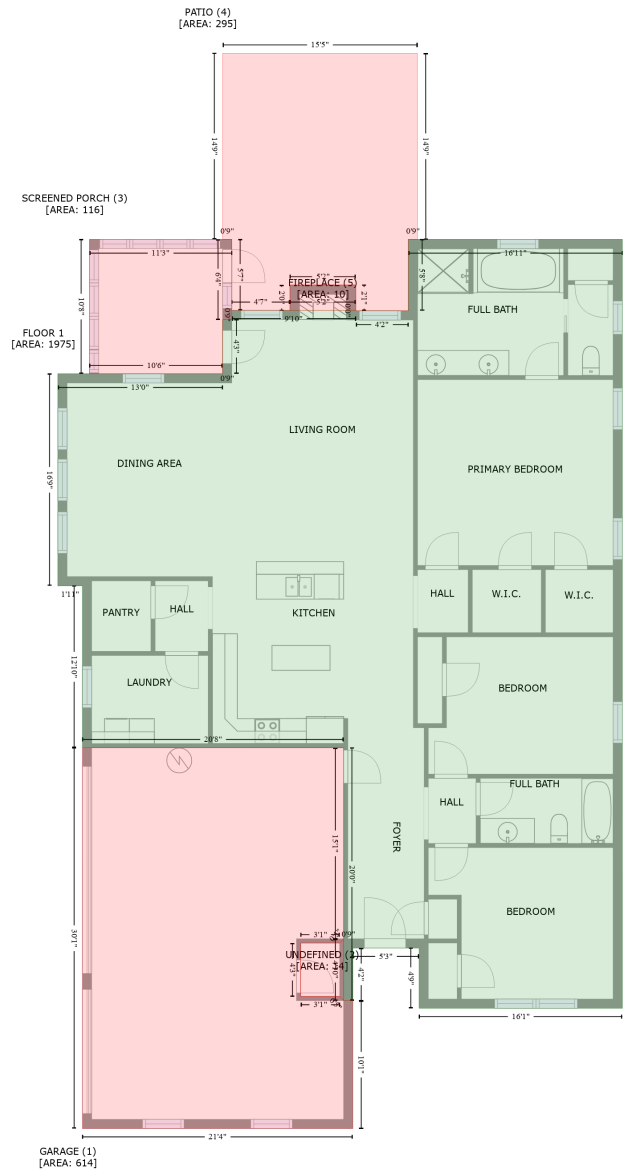


13341 Trumpet Drive, Madison, Limestone County, Alabama, United States, 35756

Gross Living Area: 1975 sq. ft



| Space | Area (sq. ft) | Calculation |
|--------------------------|---------------|---|
| FLOOR 1 (Living area) | 1975 | Coordinate Polygon Area Algorithm using inches $-((554.4 + 554.4) * (273.1 - 1002.9) + (554.4 + 361.7) * (1002.9 - 1002.9) + (361.7 + 361.7) * (1002.9 - 945.7) + (361.7 + 298.9) * (945.7 - 945.7) + (298.9 + 298.9) * (945.7 - 995.6) + (298.9 + 290.2) * (995.6 - 995.6) + (290.2 + 290.2) * (995.6 - 755.7) + (290.2 + 42.5) * (755.7 - 755.7) + (42.5 + 42.5) * (755.7 - 602) + (42.5 + 19.2) * (602 - 602) + (19.2 + 19.2) * (602 - 400.7) + (19.2 + 175.4) * (400.7 - 400.7) + (175.4 + 175.4) * (400.7 - 349.3) + (175.4 + 184.1) * (349.3 - 349.3) + (184.1 + 184.1) * (349.3 - 340.6) + (184.1 + 301.7) * (340.6 - 340.6) + (301.7 + 301.7) * (340.6 - 340.9) + (301.7 + 351.5) * (340.9 - 340.9) + (351.5 + 351.5) * (340.9 - 273.1) + (351.5 + 554.4) * (273.1 - 1002.9))$ |

13341 Trumpet Drive, Madison, Limestone County, Alabama, United States, 35756

Gross Living Area: 1975 sq. ft

| Space | Area (sq. ft) | Calculation <small>Coordinate Polygon Area Algorithm using inches</small> |
|-------------------------------------|---------------|--|
| GARAGE (Non-living area) | 614 | $(273.1 - 273.1) * 0.5 * 0.00694$ $-((290.2 + 290.2) * (755.7 - 937) + (290.2 + 286.4) * (937 - 940.9) + (286.4 + 249.5) * (940.9 - 940.9) + (249.5 + 249.5) * (940.9 - 991.6) + (249.5 + 286.4) * (991.6 - 991.6) + (286.4 + 290.2) * (991.6 - 995.6) + (290.2 + 298.9) * (995.6 - 995.6) + (298.9 + 298.9) * (995.6 - 1117) + (298.9 + 42.5) * (1117 - 1117) + (42.5 + 42.5) * (1117 - 755.7) + (42.5 + 290.2) * (755.7 - 755.7)) * 0.5 * 0.00694$ |
| UNDEFINED (Non-living area) | 14 | $-((290.2 + 290.2) * (937 - 995.3) + (290.2 + 286.4) * (995.3 - 991.6) + (286.4 + 249.5) * (991.6 - 991.6) + (249.5 + 249.5) * (991.6 - 940.9) + (249.5 + 286.4) * (940.9 - 940.9) + (286.4 + 290.2) * (940.9 - 937)) * 0.5 * 0.00694$ |
| SCREENED PORCH (Non-living area) | 116 | $-((184.1 + 184.1) * (273.1 - 349.3) + (184.1 + 175.4) * (349.3 - 349.3) + (175.4 + 175.4) * (349.3 - 400.7) + (175.4 + 49.1) * (400.7 - 400.7) + (49.1 + 49.1) * (400.7 - 273.1) + (49.1 + 184.1) * (273.1 - 273.1)) * 0.5 * 0.00694$ |
| PATIO (Non-living area) | 295 | $-((360.1 + 360.2) * (96.5 - 273.1) + (360.2 + 351.5) * (273.1 - 273.1) + (351.5 + 351.5) * (273.1 - 340.9) + (351.5 + 301.7) * (340.9 - 340.9) + (301.7 + 301.7) * (340.9 - 316.4) + (301.7 + 239.3) * (316.4 - 316.4) + (239.3 + 239.3) * (316.4 - 340.6) + (239.3 + 184.1) * (340.6 - 340.6) + (184.1 + 184.1) * (340.6 - 273.1) + (184.1 + 175.4) * (273.1 - 273.1) + (175.4 + 175.4) * (273.1 - 96.5) + (175.4 + 360.1) * (96.5 - 96.5)) * 0.5 * 0.00694$ |
| FIREPLACE (Non-living area) | 10 | $-((301.7 + 301.7) * (316.4 - 340.6) + (301.7 + 239.3) * (340.6 - 340.6) + (239.3 + 239.3) * (340.6 - 316.4) + (239.3 + 301.7) * (316.4 - 316.4)) * 0.5 * 0.00694$ |