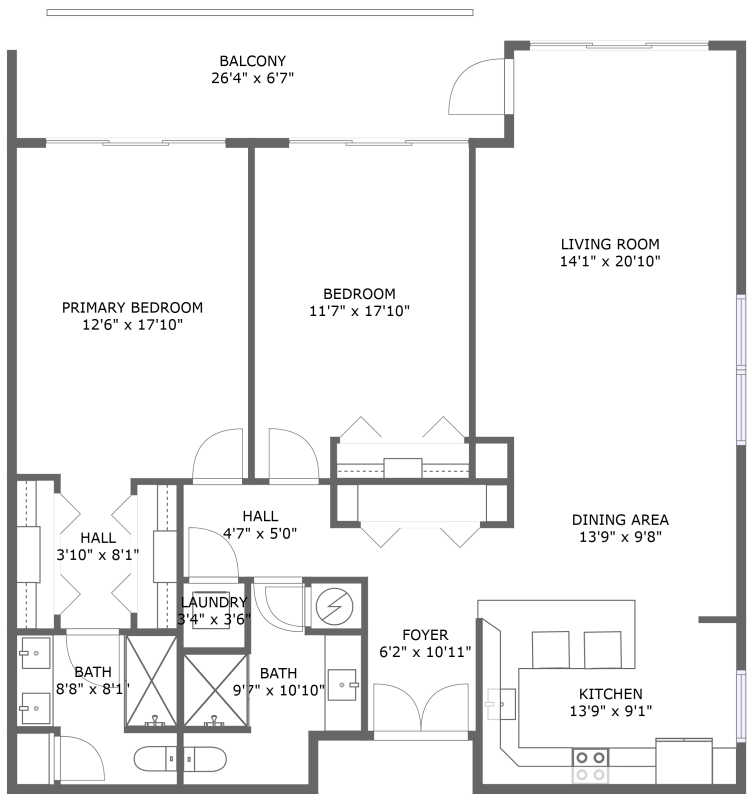



Home report

1400 Gulf Boulevard, Sand Key Club, Clearwater Beach, Pinellas County, Florida, United States, 33767, 804




FLOOR 1


Property summary




**0**  
Garages



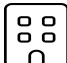
**2**  
Bedrooms




**2**  
Bathrooms




**0**  
Half baths



**1**  
Floors



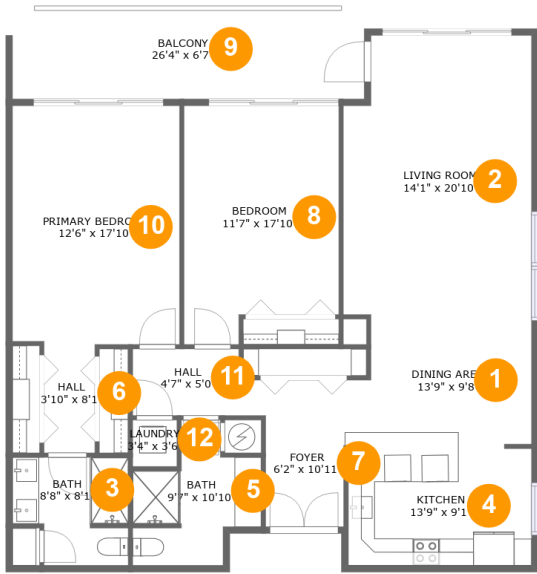
**1,371**  
Gross living area sqft



**1,539**  
Total sqft

Home report

1400 Gulf Boulevard, Sand Key Club, Clearwater Beach, Pinellas County, Florida, United States, 33767, 804



Room dimensions

Floor 1 Total sqft: 1539    Living area: 1371

#		Dimensions	sqft	Counted as living area
1	Dining Area	13'9" x 9'8"	124 sq. ft	Yes
2	Living Room	14'1" x 20'10"	283 sq. ft	Yes
3	Bath	8'8" x 8'1"	62 sq. ft	Yes
4	Kitchen	13'9" x 9'1"	124 sq. ft	Yes
5	Bath	9'7" x 10'10"	73 sq. ft	Yes
6	Hall	3'10" x 8'1"	31 sq. ft	Yes
7	Foyer	6'2" x 10'11"	66 sq. ft	Yes
8	Bedroom	11'7" x 17'10"	190 sq. ft	Yes
9	Balcony	26'4" x 6'7"	168 sq. ft	No
10	Primary Bedroom	12'6" x 17'10"	222 sq. ft	Yes
11	Hall	4'7" x 5'0"	45 sq. ft	Yes

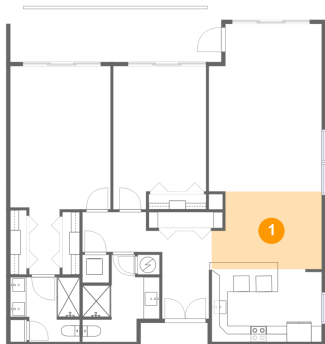
Home report

1400 Gulf Boulevard, Sand Key Club, Clearwater Beach, Pinellas  
County, Florida, United States, 33767, 804

#		Dimensions	sqft	Counted as living area
12	Laundry	3'4" x 3'6"	11 sq. ft	Yes

1400 Gulf Boulevard, Sand Key Club, Clearwater Beach, Pinellas  
County, Florida, United States, 33767, 804

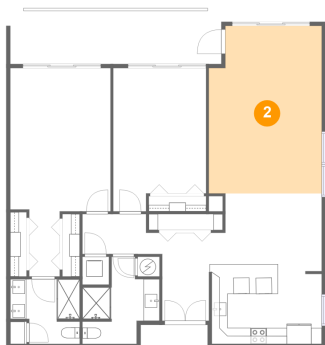
1 Floor 1 - Dining Area



Dimensions: 13'9" x 9'8"  
Area: 124 sq. ft  
Counted as living area: Yes

Heated: Yes  
Finished: Yes  
Enclosed: Yes  
Contiguous: Yes  
Permitted: Yes  
Wet space: No  
Addition: No  
Conversion: No

2 Floor 1 - Living Room



Dimensions: 14'1" x 20'10"  
Area: 283 sq. ft  
Counted as living area: Yes

Heated: Yes  
Finished: Yes  
Enclosed: Yes  
Contiguous: Yes  
Permitted: Yes  
Wet space: No  
Addition: No  
Conversion: No

3 Floor 1 - Bath



Dimensions: 8'8" x 8'1"  
Area: 62 sq. ft  
Counted as living area: Yes

Heated: Yes  
Finished: Yes  
Enclosed: Yes  
Contiguous: Yes  
Permitted: Yes  
Wet space: Yes  
Addition: No  
Conversion: No

4 Floor 1 - Kitchen



Dimensions: 13'9" x 9'1"  
Area: 124 sq. ft  
Counted as living area: Yes

Heated: Yes  
Finished: Yes  
Enclosed: Yes  
Contiguous: Yes  
Permitted: Yes  
Wet space: No  
Addition: No  
Conversion: No

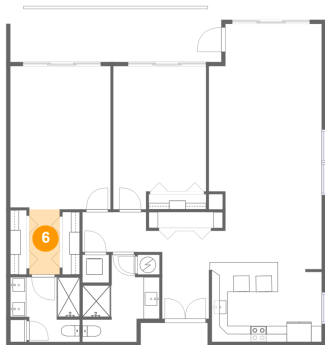
5 Floor 1 - Bath



Dimensions: 9'7" x 10'10"  
Area: 73 sq. ft  
Counted as living area: Yes

Heated: Yes  
Finished: Yes  
Enclosed: Yes  
Contiguous: Yes  
Permitted: Yes  
Wet space: Yes  
Addition: No  
Conversion: No

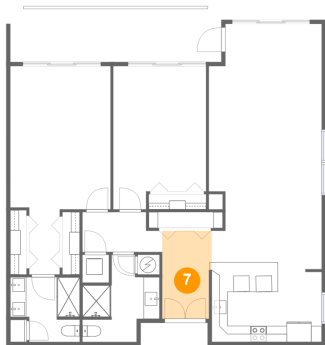
6 Floor 1 - Hall



Dimensions: 3'10" x 8'1"  
Area: 31 sq. ft  
Counted as living area: Yes

Heated: Yes  
Finished: Yes  
Enclosed: Yes  
Contiguous: Yes  
Permitted: Yes  
Wet space: No  
Addition: No  
Conversion: No

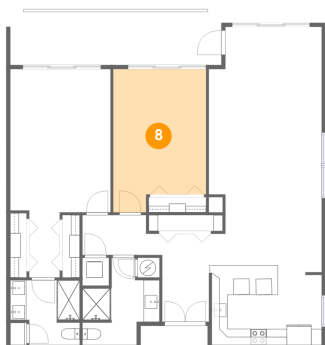
7 Floor 1 - Foyer



Dimensions: 6'2" x 10'11"  
Area: 66 sq. ft  
Counted as living area: Yes

Heated: Yes  
Finished: Yes  
Enclosed: Yes  
Contiguous: Yes  
Permitted: Yes  
Wet space: No  
Addition: No  
Conversion: No

8 Floor 1 - Bedroom



Dimensions: 11'7" x 17'10"  
Area: 190 sq. ft  
Counted as living area: Yes

Heated: Yes  
Finished: Yes  
Enclosed: Yes  
Contiguous: Yes  
Permitted: Yes  
Wet space: No  
Addition: No  
Conversion: No

## Home report

1400 Gulf Boulevard, Sand Key Club, Clearwater Beach, Pinellas County, Florida, United States, 33767, 804

### 9 Floor 1 - Balcony



Dimensions: 26'4" x 6'7"  
Area: 168 sq. ft  
Counted as living area: No

Heated: No  
Finished: Yes  
Enclosed: No  
Contiguous: Yes  
Permitted: Yes  
Wet space: No  
Addition: No  
Conversion: No

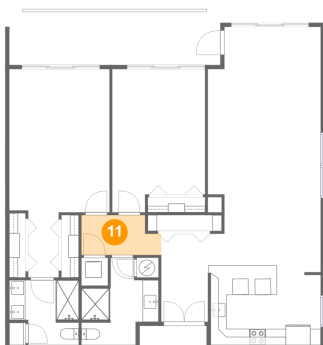
### 10 Floor 1 - Primary Bedroom



Dimensions: 12'6" x 17'10"  
Area: 222 sq. ft  
Counted as living area: Yes

Heated: Yes  
Finished: Yes  
Enclosed: Yes  
Contiguous: Yes  
Permitted: Yes  
Wet space: No  
Addition: No  
Conversion: No

### 11 Floor 1 - Hall

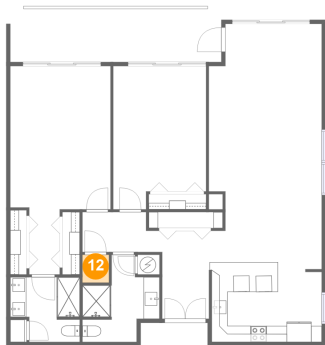


Dimensions: 4'7" x 5'0"  
Area: 45 sq. ft  
Counted as living area: Yes

Heated: Yes  
Finished: Yes  
Enclosed: Yes  
Contiguous: Yes  
Permitted: Yes  
Wet space: No  
Addition: No  
Conversion: No

1400 Gulf Boulevard, Sand Key Club, Clearwater Beach, Pinellas  
County, Florida, United States, 33767, 804

12 Floor 1 - Laundry



Dimensions: 3'4" x 3'6"  
Area: 11 sq. ft  
Counted as living area: Yes

Heated: Yes  
Finished: Yes  
Enclosed: Yes  
Contiguous: Yes  
Permitted: Yes  
Wet space: No  
Addition: No  
Conversion: No