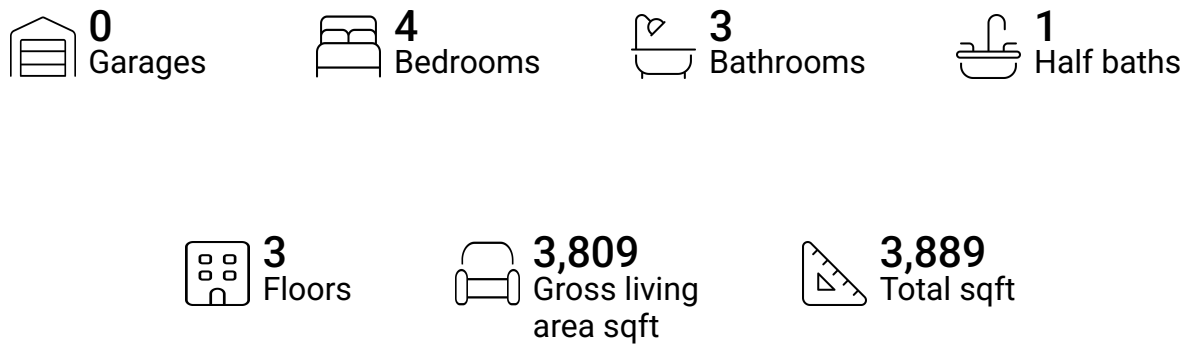


Home report

11390 Buhrman Dr E,Waynesboro,PA,US

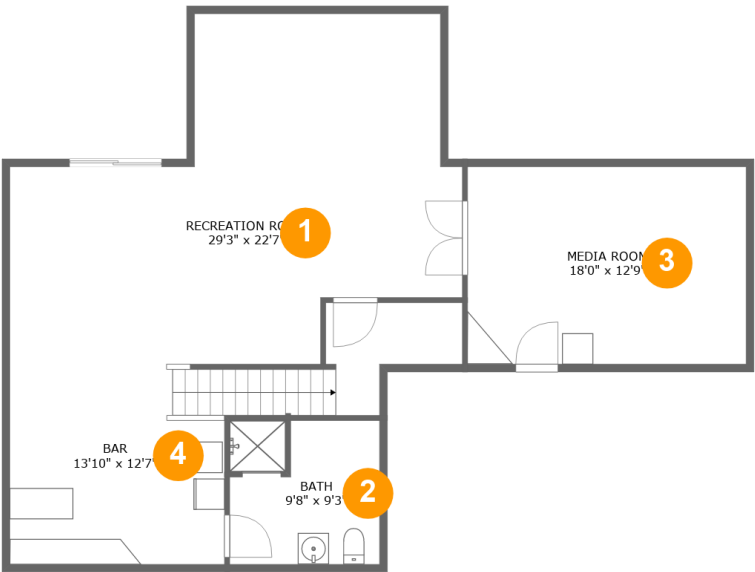


Property summary



Home report

11390 Buhrman Dr E,Waynesboro,PA,US



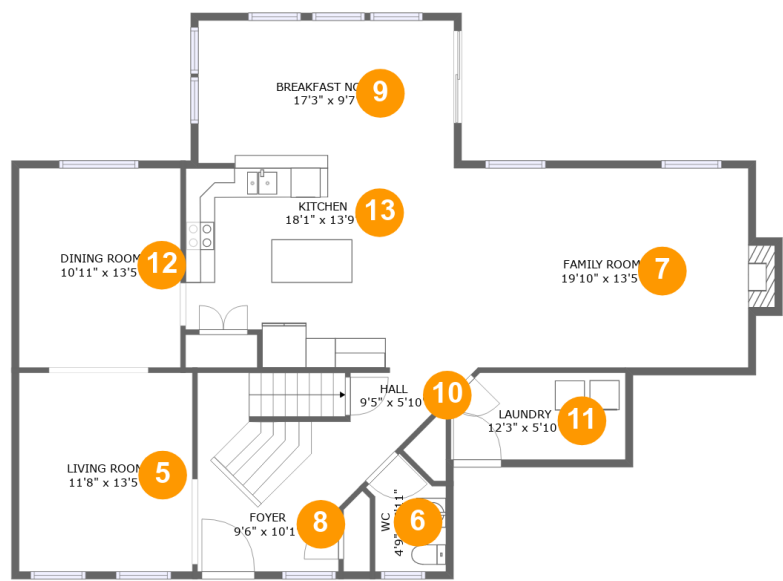
Room dimensions

Floor 1 Total sqft: 1156 Living area: 1156

#		Dimensions	sqft	Counted as living area
1	Recreation Room	29'3" x 22'7"	494 sq. ft	Yes
2	Bath	9'8" x 9'3"	88 sq. ft	Yes
3	Media Room	18'0" x 12'9"	229 sq. ft	Yes
4	Bar	13'10" x 12'7"	204 sq. ft	Yes

Home report

11390 Buhrman Dr E,Waynesboro,PA,US



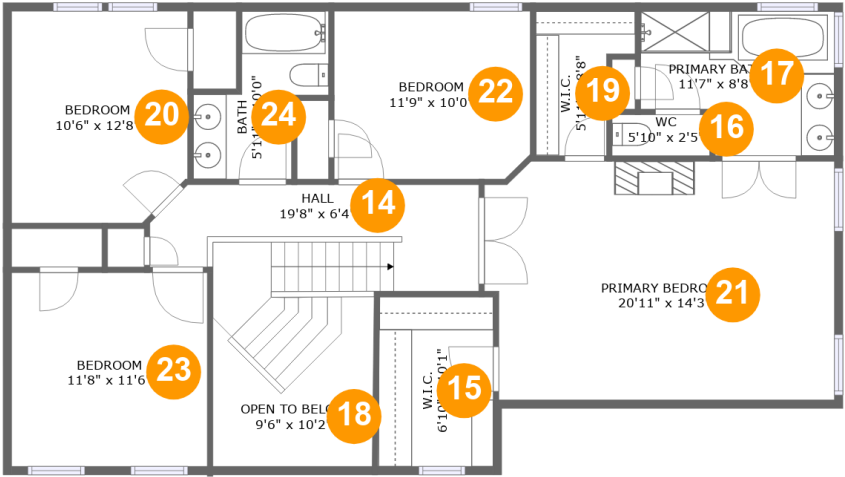
Room dimensions

Floor 2 Total sqft: 1400 Living area: 1391

#		Dimensions	sqft	Counted as living area
5	Living Room	11'8" x 13'5"	157 sq. ft	Yes
6	WC	4'9" x 7'11"	33 sq. ft	Yes
7	Family Room	19'10" x 13'5"	274 sq. ft	Yes
8	Foyer	9'6" x 10'1"	127 sq. ft	Yes
9	Breakfast Nook	17'3" x 9'7"	166 sq. ft	Yes
10	Hall	9'5" x 5'10"	41 sq. ft	Yes
11	Laundry	12'3" x 5'10"	67 sq. ft	Yes
12	Dining Room	10'11" x 13'5"	146 sq. ft	Yes
13	Kitchen	18'1" x 13'9"	235 sq. ft	Yes

Home report

11390 Buhrman Dr E,Waynesboro,PA,US

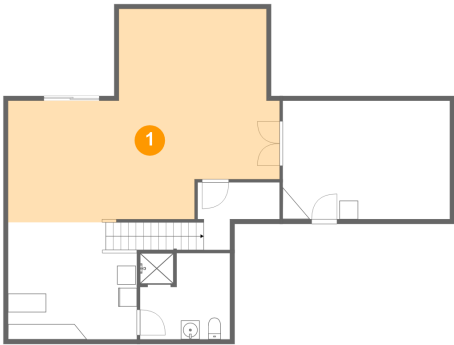


Room dimensions

Floor 3 Total sqft: 1333 Living area: 1262

#		Dimensions	sqft	Counted as living area
14	Hall	19'8" x 6'4"	151 sq. ft	Yes
15	W.I.C.	6'10" x 10'1"	69 sq. ft	Yes
16	WC	5'10" x 2'5"	14 sq. ft	Yes
17	Primary Bath	11'7" x 8'8"	88 sq. ft	Yes
18	Open To Below	9'6" x 10'2"	67 sq. ft	No
19	W.I.C.	5'11" x 8'8"	41 sq. ft	Yes
20	Bedroom	10'6" x 12'8"	129 sq. ft	Yes
21	Primary Bedroom	20'11" x 14'3"	290 sq. ft	Yes
22	Bedroom	11'9" x 10'0"	116 sq. ft	Yes
23	Bedroom	11'8" x 11'6"	135 sq. ft	Yes
24	Bath	5'11" x 10'0"	56 sq. ft	Yes

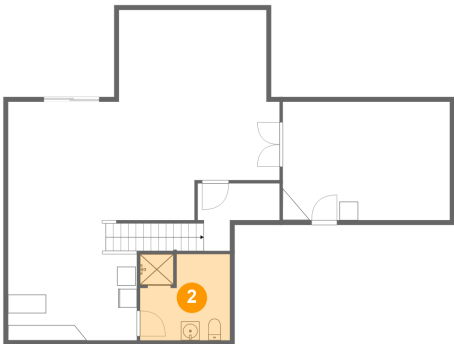
1 Floor 1 - Recreation Room



Dimensions: 29'3" x 22'7"
Area: 494 sq. ft
Counted as living area: Yes

Heated: Yes
Finished: Yes
Enclosed: Yes
Contiguous: Yes
Permitted: Yes
Wet space: No
Addition: No
Conversion: No

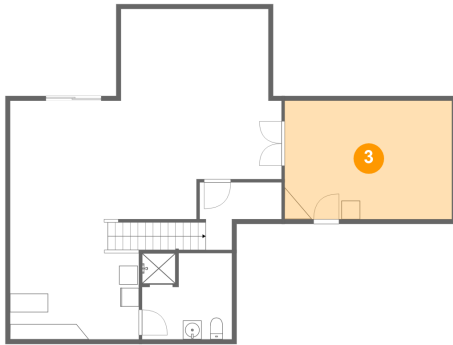
2 Floor 1 - Bath



Dimensions: 9'8" x 9'3"
Area: 88 sq. ft
Counted as living area: Yes

Heated: Yes
Finished: Yes
Enclosed: Yes
Contiguous: Yes
Permitted: Yes
Wet space: Yes
Addition: No
Conversion: No

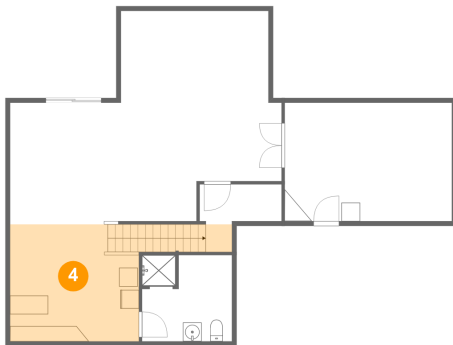
3 Floor 1 - Media Room



Dimensions: 18'0" x 12'9"
Area: 229 sq. ft
Counted as living area: Yes

Heated: Yes
Finished: Yes
Enclosed: Yes
Contiguous: Yes
Permitted: Yes
Wet space: No
Addition: No
Conversion: No

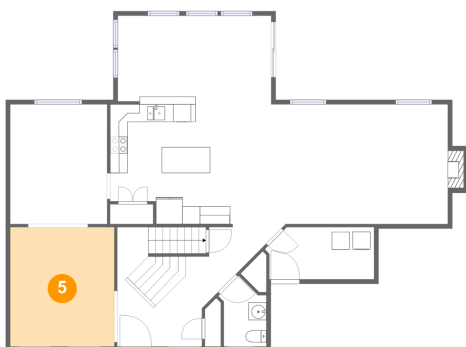
4 Floor 1 - Bar



Dimensions: 13'10" x 12'7"
Area: 204 sq. ft
Counted as living area: Yes

Heated: Yes
Finished: Yes
Enclosed: Yes
Contiguous: Yes
Permitted: Yes
Wet space: No
Addition: No
Conversion: No

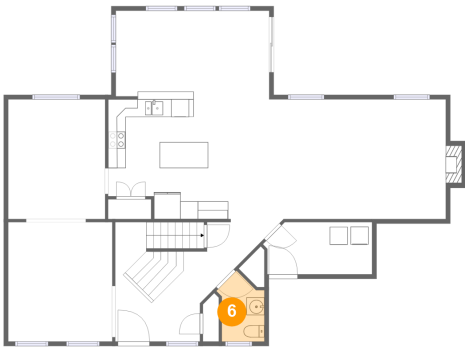
5 Floor 2 - Living Room



Dimensions: 11'8" x 13'5"
Area: 157 sq. ft
Counted as living area: Yes

Heated: Yes
Finished: Yes
Enclosed: Yes
Contiguous: Yes
Permitted: Yes
Wet space: No
Addition: No
Conversion: No

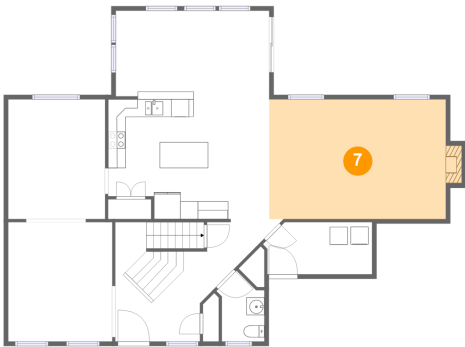
6 Floor 2 - WC



Dimensions: 4'9" x 7'11"
Area: 33 sq. ft
Counted as living area: Yes

Heated: Yes
Finished: Yes
Enclosed: Yes
Contiguous: Yes
Permitted: Yes
Wet space: Yes
Addition: No
Conversion: No

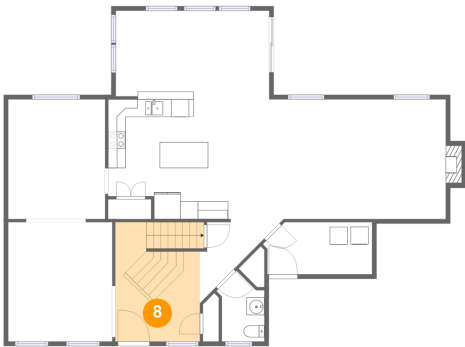
7 Floor 2 - Family Room



Dimensions: 19'10" x 13'5"
Area: 274 sq. ft
Counted as living area: Yes

Heated: Yes
Finished: Yes
Enclosed: Yes
Contiguous: Yes
Permitted: Yes
Wet space: No
Addition: No
Conversion: No

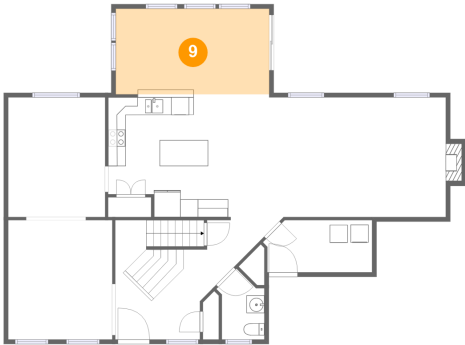
8 Floor 2 - Foyer



Dimensions: 9'6" x 10'1"
Area: 127 sq. ft
Counted as living area: Yes

Heated: Yes
Finished: Yes
Enclosed: Yes
Contiguous: Yes
Permitted: Yes
Wet space: No
Addition: No
Conversion: No

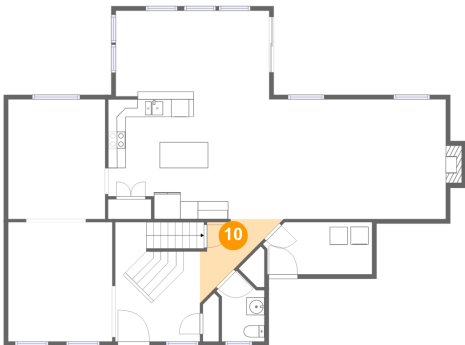
9 Floor 2 - Breakfast Nook



Dimensions: 17'3" x 9'7"
Area: 166 sq. ft
Counted as living area: Yes

Heated: Yes
Finished: Yes
Enclosed: Yes
Contiguous: Yes
Permitted: Yes
Wet space: No
Addition: No
Conversion: No

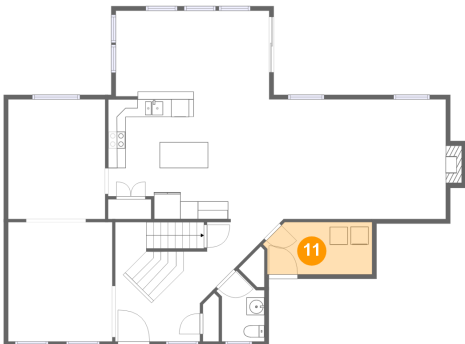
10 Floor 2 - Hall



Dimensions: 9'5" x 5'10"
Area: 41 sq. ft
Counted as living area: Yes

Heated: Yes
Finished: Yes
Enclosed: Yes
Contiguous: Yes
Permitted: Yes
Wet space: No
Addition: No
Conversion: No

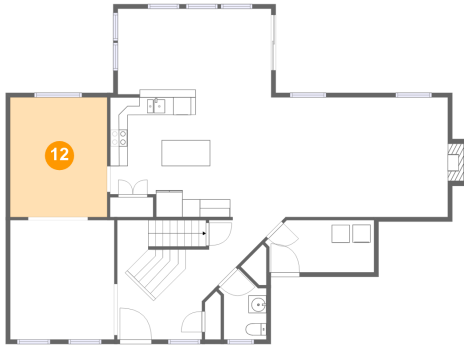
11 Floor 2 - Laundry



Dimensions: 12'3" x 5'10"
Area: 67 sq. ft
Counted as living area: Yes

Heated: Yes
Finished: Yes
Enclosed: Yes
Contiguous: Yes
Permitted: Yes
Wet space: No
Addition: No
Conversion: No

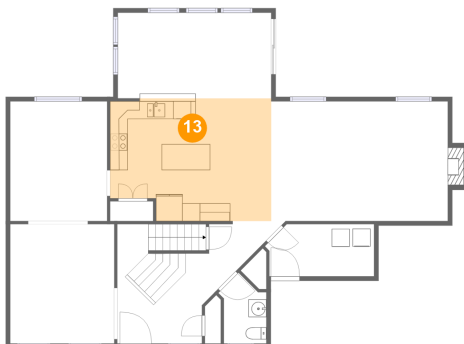
12 Floor 2 - Dining Room



Dimensions: 10'11" x 13'5"
Area: 146 sq. ft
Counted as living area: Yes

Heated: Yes
Finished: Yes
Enclosed: Yes
Contiguous: Yes
Permitted: Yes
Wet space: No
Addition: No
Conversion: No

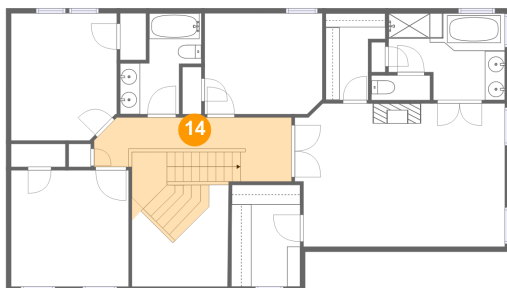
13 Floor 2 - Kitchen



Dimensions: 18'1" x 13'9"
Area: 235 sq. ft
Counted as living area: Yes

Heated: Yes
Finished: Yes
Enclosed: Yes
Contiguous: Yes
Permitted: Yes
Wet space: No
Addition: No
Conversion: No

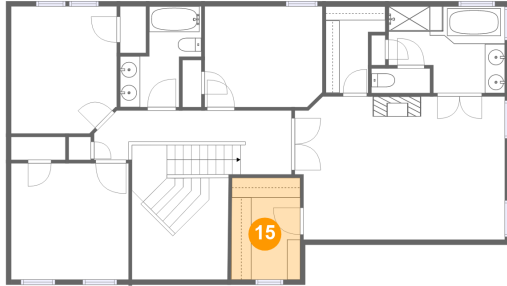
14 Floor 3 - Hall



Dimensions: 19'8" x 6'4"
Area: 151 sq. ft
Counted as living area: Yes

Heated: Yes
Finished: Yes
Enclosed: Yes
Contiguous: Yes
Permitted: Yes
Wet space: No
Addition: No
Conversion: No

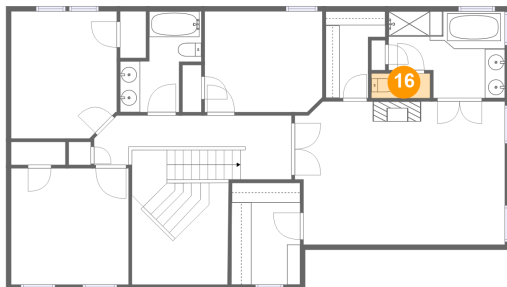
15 Floor 3 - W.I.C.



Dimensions: 6'10" x 10'1"
Area: 69 sq. ft
Counted as living area: Yes

Heated: Yes
Finished: Yes
Enclosed: Yes
Contiguous: Yes
Permitted: Yes
Wet space: No
Addition: No
Conversion: No

16 Floor 3 - WC



Dimensions: 5'10" x 2'5"
Area: 14 sq. ft
Counted as living area: Yes

Heated: Yes
Finished: Yes
Enclosed: Yes
Contiguous: Yes
Permitted: Yes
Wet space: Yes
Addition: No
Conversion: No

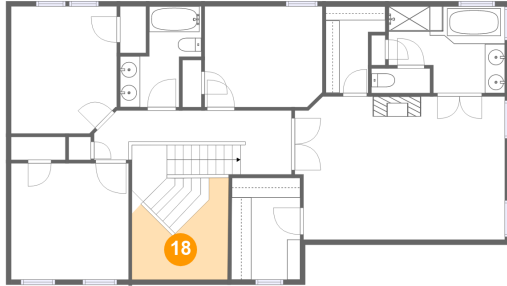
17 Floor 3 - Primary Bath



Dimensions: 11'7" x 8'8"
Area: 88 sq. ft
Counted as living area: Yes

Heated: Yes
Finished: Yes
Enclosed: Yes
Contiguous: Yes
Permitted: Yes
Wet space: Yes
Addition: No
Conversion: No

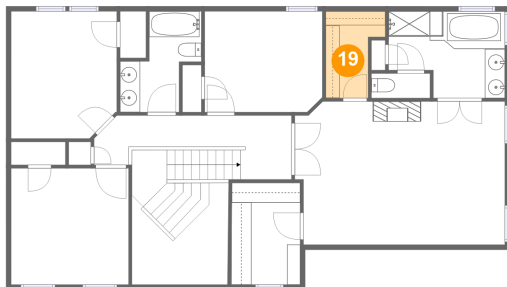
18 Floor 3 - Open To Below



Dimensions: 9'6" x 10'2"
Area: 67 sq. ft
Counted as living area: No

Heated: No
Finished: No
Enclosed: No
Contiguous: Yes
Permitted: No
Wet space: No
Addition: No
Conversion: No

19 Floor 3 - W.I.C.



Dimensions: 5'11" x 8'8"
Area: 41 sq. ft
Counted as living area: Yes

Heated: Yes
Finished: Yes
Enclosed: Yes
Contiguous: Yes
Permitted: Yes
Wet space: No
Addition: No
Conversion: No

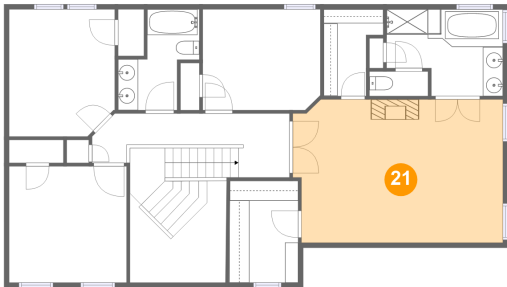
20 Floor 3 - Bedroom



Dimensions: 10'6" x 12'8"
Area: 129 sq. ft
Counted as living area: Yes

Heated: Yes
Finished: Yes
Enclosed: Yes
Contiguous: Yes
Permitted: Yes
Wet space: No
Addition: No
Conversion: No

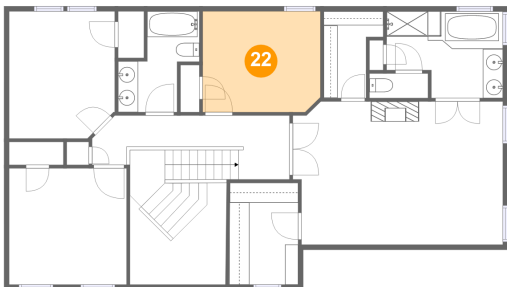
21 Floor 3 - Primary Bedroom



Dimensions: 20'11" x 14'3"
Area: 290 sq. ft
Counted as living area: Yes

Heated: Yes
Finished: Yes
Enclosed: Yes
Contiguous: Yes
Permitted: Yes
Wet space: No
Addition: No
Conversion: No

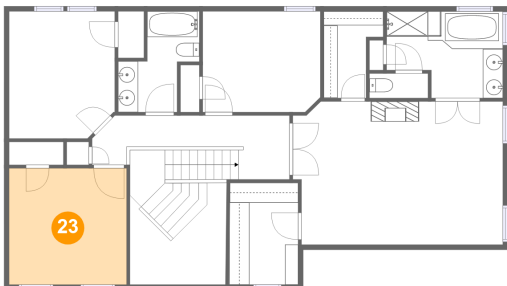
22 Floor 3 - Bedroom



Dimensions: 11'9" x 10'0"
Area: 116 sq. ft
Counted as living area: Yes

Heated: Yes
Finished: Yes
Enclosed: Yes
Contiguous: Yes
Permitted: Yes
Wet space: No
Addition: No
Conversion: No

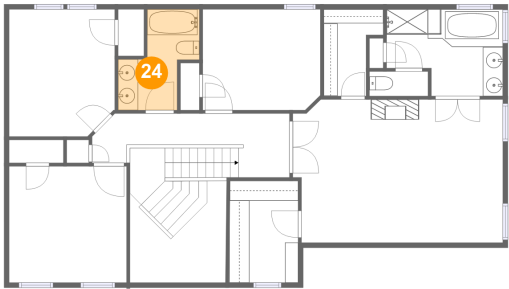
23 Floor 3 - Bedroom



Dimensions: 11'8" x 11'6"
Area: 135 sq. ft
Counted as living area: Yes

Heated: Yes
Finished: Yes
Enclosed: Yes
Contiguous: Yes
Permitted: Yes
Wet space: No
Addition: No
Conversion: No

24 Floor 3 - Bath



Dimensions: 5'11" x 10'0"
Area: 56 sq. ft
Counted as living area: Yes

Heated: Yes
Finished: Yes
Enclosed: Yes
Contiguous: Yes
Permitted: Yes
Wet space: Yes
Addition: No
Conversion: No