

Home report

14 Stone Hedge Drive, Lebanon South, Lebanon, Lebanon
County, Pennsylvania, United States, 17042



Total Area: 3075 sq. ft

Below Ground: 0 sq. ft, Floor 2: 1770 sq. ft, Floor 3: 1305 sq. ft

Excluded: Storage 142 sq. ft, Basement 1362 sq. ft, Garage 898 sq. ft, Porch 131 sq. ft, Fireplace 10 sq. ft, Open to below 70 sq. ft, Embedded window 36 sq. ft, Walls: 340 sq. ft

Property summary

 **3** Floors

 **4** Bedrooms

 **2** Bathrooms

Home report

**14 Stone Hedge Drive, Lebanon South, Lebanon, Lebanon
County, Pennsylvania, United States, 17042**

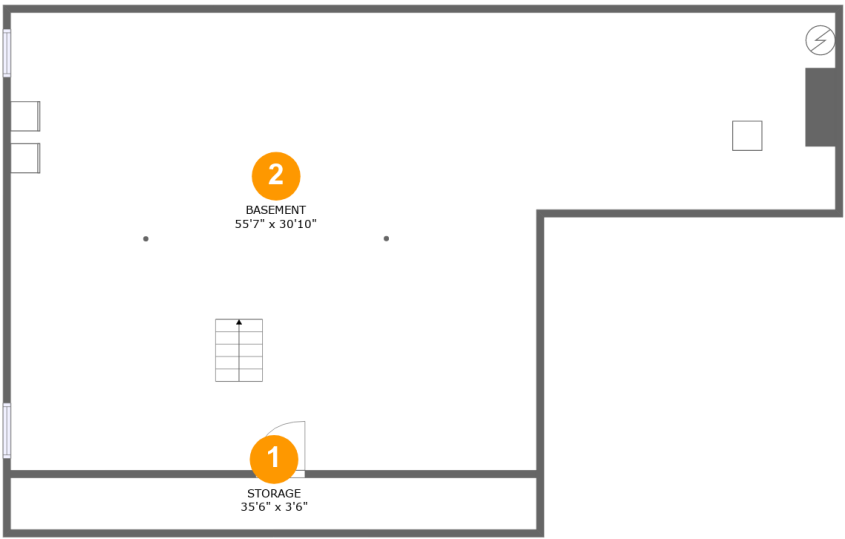


1
Half baths



2
Garages

14 Stone Hedge Drive, Lebanon South, Lebanon, Lebanon
County, Pennsylvania, United States, 17042



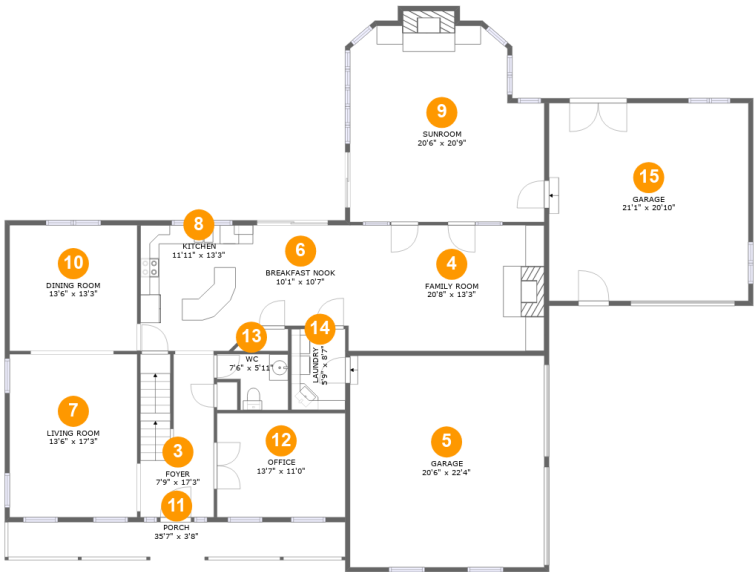
Room dimensions

Floor 1 Below ground Total:0sqft Excluded: 1504sqft

| # | | Max Dimensions | sqft | Included |
|---|----------|----------------|-------------|----------|
| 1 | Storage | 35'6" x 3'6" | 124 sq. ft | No |
| 2 | Basement | 55'7" x 30'10" | 1362 sq. ft | No |

Home report

14 Stone Hedge Drive, Lebanon South, Lebanon, Lebanon
County, Pennsylvania, United States, 17042



Room dimensions

Floor 2 Total:1770sqft Excluded: 1039sqft

| # | | Max Dimensions | sqft | Included |
|----|----------------|----------------|------------|----------|
| 3 | Foyer | 7'9" x 17'3" | 131 sq. ft | Yes |
| 4 | Family Room | 20'8" x 13'3" | 275 sq. ft | Yes |
| 5 | Garage | 20'6" x 22'4" | 458 sq. ft | No |
| 6 | Breakfast Nook | 10'1" x 10'7" | 107 sq. ft | Yes |
| 7 | Living Room | 13'6" x 17'3" | 232 sq. ft | Yes |
| 8 | Kitchen | 11'11" x 13'3" | 155 sq. ft | Yes |
| 9 | Sunroom | 20'6" x 20'9" | 396 sq. ft | Yes |
| 10 | Dining Room | 13'6" x 13'3" | 179 sq. ft | Yes |
| 11 | Porch | 35'7" x 3'8" | 131 sq. ft | No |
| 12 | Office | 13'7" x 11'0" | 149 sq. ft | Yes |
| 13 | WC | 7'6" x 5'11" | 36 sq. ft | Yes |

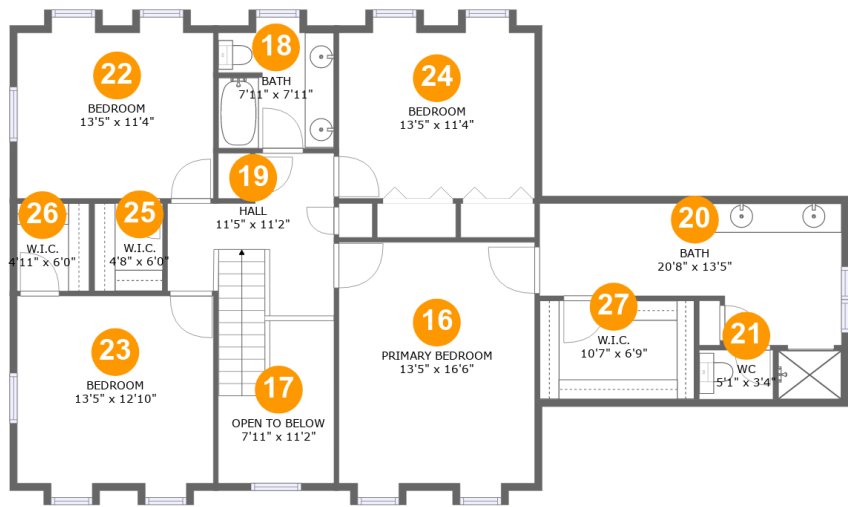
Home report

14 Stone Hedge Drive, Lebanon South, Lebanon, Lebanon
County, Pennsylvania, United States, 17042

| # | | Max Dimensions | sqft | Included |
|----|---------|----------------|------------|----------|
| 14 | Laundry | 5'9" x 8'7" | 49 sq. ft | Yes |
| 15 | Garage | 21'1" x 20'10" | 440 sq. ft | No |

Home report

14 Stone Hedge Drive, Lebanon South, Lebanon, Lebanon
County, Pennsylvania, United States, 17042



Room dimensions

Floor 3 Total:1305sqft Excluded: 106sqft

| # | | Max Dimensions | sqft | Included |
|----|-----------------|----------------|------------|----------|
| 16 | Primary Bedroom | 13'5" x 16'6" | 221 sq. ft | Yes |
| 17 | Open To Below | 7'11" x 11'2" | 70 sq. ft | No |
| 18 | Bath | 7'11" x 7'11" | 62 sq. ft | Yes |
| 19 | Hall | 11'5" x 11'2" | 121 sq. ft | Yes |
| 20 | Bath | 20'8" x 13'5" | 173 sq. ft | Yes |
| 21 | WC | 5'1" x 3'4" | 17 sq. ft | Yes |
| 22 | Bedroom | 13'5" x 11'4" | 153 sq. ft | Yes |
| 23 | Bedroom | 13'5" x 12'10" | 172 sq. ft | Yes |
| 24 | Bedroom | 13'5" x 11'4" | 152 sq. ft | Yes |
| 25 | W.I.C. | 4'8" x 6'0" | 28 sq. ft | Yes |
| 26 | W.I.C. | 4'11" x 6'0" | 30 sq. ft | Yes |

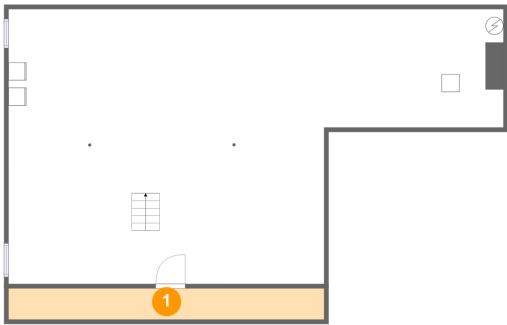
Home report

**14 Stone Hedge Drive, Lebanon South, Lebanon, Lebanon
County, Pennsylvania, United States, 17042**

| # | | Max Dimensions | sqft | Included |
|----|--------|----------------|-----------|----------|
| 27 | W.I.C. | 10'7" x 6'9" | 72 sq. ft | Yes |

14 Stone Hedge Drive, Lebanon South, Lebanon, Lebanon
County, Pennsylvania, United States, 17042

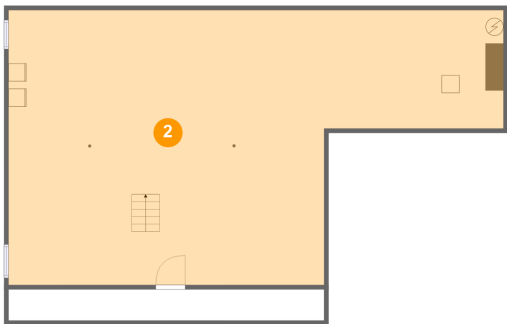
1 Floor 1 - Storage



Max Dimensions: 35'6" x 3'6"
Calculated Area: 124 sq. ft
Included: No

Heated: No
Finished: No
Enclosed: No
Contiguous: Yes
Permitted: Yes
Wet space: No
Addition: No
Conversion: No

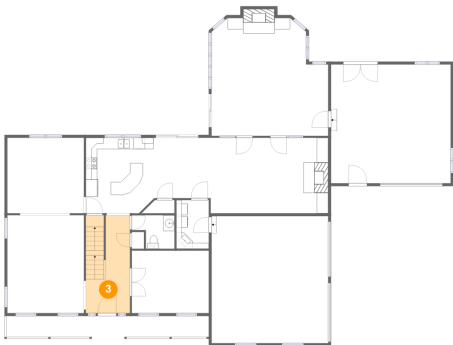
2 Floor 1 - Basement



Max Dimensions: 55'7" x 30'10"
Calculated Area: 1362 sq. ft
Included: No

Heated: Yes
Finished: No
Enclosed: Yes
Contiguous: Yes
Permitted: Yes
Wet space: No
Addition: No
Conversion: No

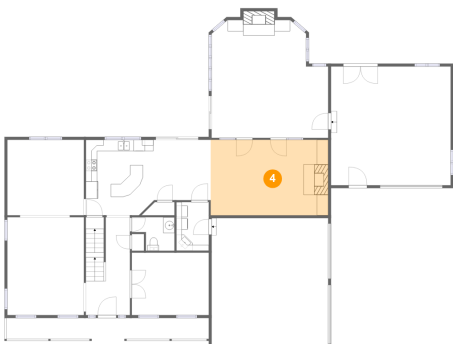
3 Floor 2 - Foyer



Max Dimensions: 7'9" x 17'3"
Calculated Area: 131 sq. ft
Included: Yes

Heated: Yes
Finished: Yes
Enclosed: Yes
Contiguous: Yes
Permitted: Yes
Wet space: No
Addition: No
Conversion: No

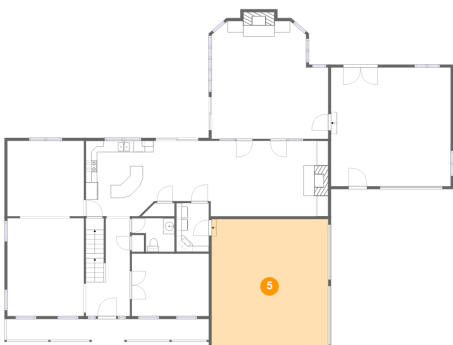
4 Floor 2 - Family Room



Max Dimensions: 20'8" x 13'3"
Calculated Area: 275 sq. ft
Included: Yes

Heated: Yes
Finished: Yes
Enclosed: Yes
Contiguous: Yes
Permitted: Yes
Wet space: No
Addition: No
Conversion: No

5 Floor 2 - Garage



Max Dimensions: 20'6" x 22'4"
Calculated Area: 458 sq. ft
Included: No

Heated: No
Finished: No
Enclosed: Yes
Contiguous: Yes
Permitted: Yes
Wet space: No
Addition: No
Conversion: No

14 Stone Hedge Drive, Lebanon South, Lebanon, Lebanon
County, Pennsylvania, United States, 17042

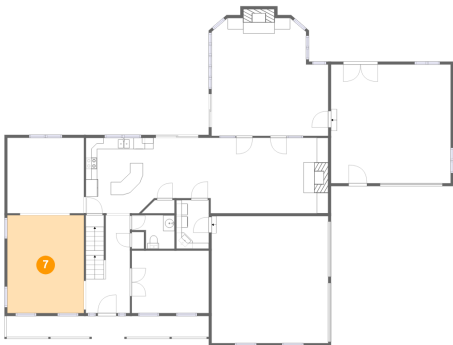
6 Floor 2 - Breakfast Nook



Max Dimensions: 10'1" x 10'7"
Calculated Area: 107 sq. ft
Included: Yes

Heated: Yes
Finished: Yes
Enclosed: Yes
Contiguous: Yes
Permitted: Yes
Wet space: No
Addition: No
Conversion: No

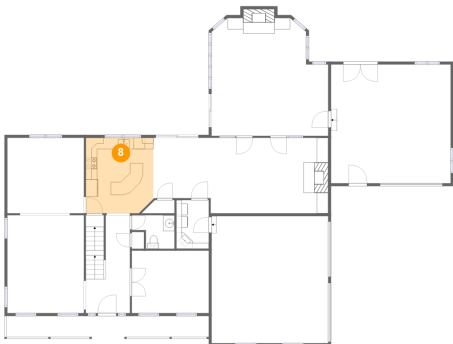
7 Floor 2 - Living Room



Max Dimensions: 13'6" x 17'3"
Calculated Area: 232 sq. ft
Included: Yes

Heated: Yes
Finished: Yes
Enclosed: Yes
Contiguous: Yes
Permitted: Yes
Wet space: No
Addition: No
Conversion: No

8 Floor 2 - Kitchen

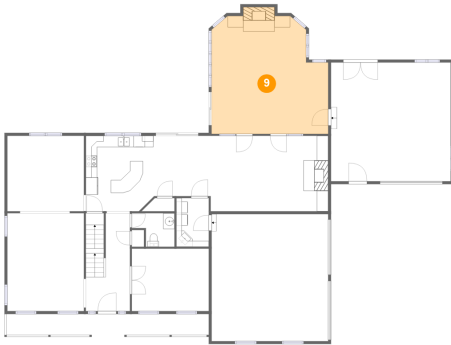


Max Dimensions: 11'11" x 13'3"
Calculated Area: 155 sq. ft
Included: Yes

Heated: Yes
Finished: Yes
Enclosed: Yes
Contiguous: Yes
Permitted: Yes
Wet space: No
Addition: No
Conversion: No

14 Stone Hedge Drive, Lebanon South, Lebanon, Lebanon
County, Pennsylvania, United States, 17042

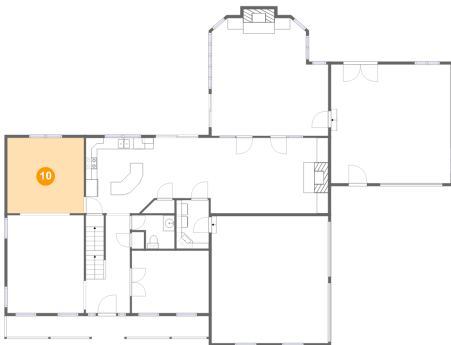
9 Floor 2 - Sunroom



Max Dimensions: 20'6" x 20'9"
Calculated Area: 396 sq. ft
Included: Yes

Heated: Yes
Finished: Yes
Enclosed: Yes
Contiguous: Yes
Permitted: Yes
Wet space: No
Addition: No
Conversion: No

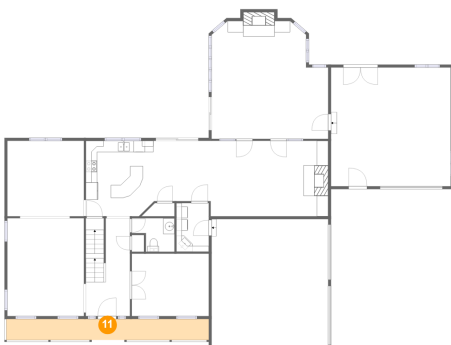
10 Floor 2 - Dining Room



Max Dimensions: 13'6" x 13'3"
Calculated Area: 179 sq. ft
Included: Yes

Heated: Yes
Finished: Yes
Enclosed: Yes
Contiguous: Yes
Permitted: Yes
Wet space: No
Addition: No
Conversion: No

11 Floor 2 - Porch

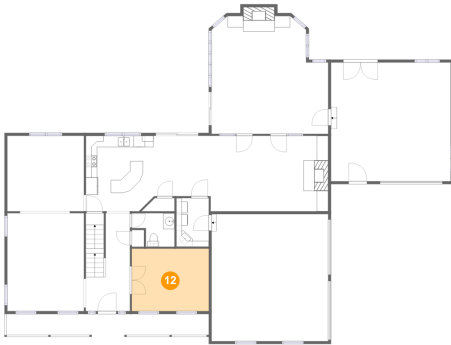


Max Dimensions: 35'7" x 3'8"
Calculated Area: 131 sq. ft
Included: No

Heated: No
Finished: Yes
Enclosed: No
Contiguous: Yes
Permitted: Yes
Wet space: No
Addition: No
Conversion: No

14 Stone Hedge Drive, Lebanon South, Lebanon, Lebanon
County, Pennsylvania, United States, 17042

12 Floor 2 - Office



Max Dimensions: 13'7" x 11'0"
Calculated Area: 149 sq. ft
Included: Yes

Heated: Yes
Finished: Yes
Enclosed: Yes
Contiguous: Yes
Permitted: Yes
Wet space: No
Addition: No
Conversion: No

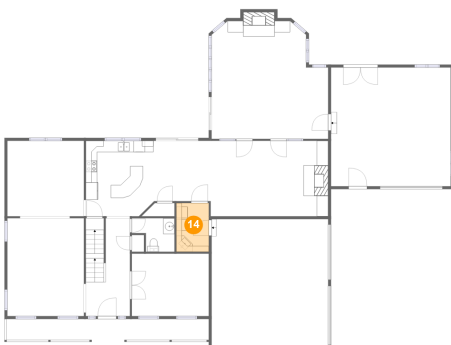
13 Floor 2 - WC



Max Dimensions: 7'6" x 5'11"
Calculated Area: 36 sq. ft
Included: Yes

Heated: Yes
Finished: Yes
Enclosed: Yes
Contiguous: Yes
Permitted: Yes
Wet space: Yes
Addition: No
Conversion: No

14 Floor 2 - Laundry



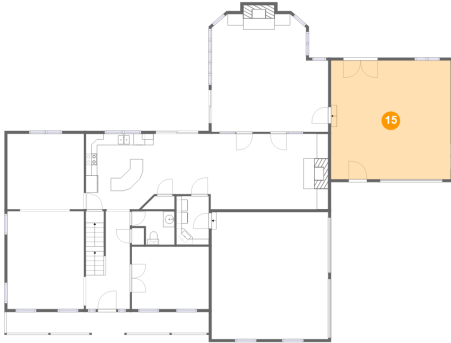
Max Dimensions: 5'9" x 8'7"
Calculated Area: 49 sq. ft
Included: Yes

Heated: Yes
Finished: Yes
Enclosed: Yes
Contiguous: Yes
Permitted: Yes
Wet space: No
Addition: No
Conversion: No

Home report

14 Stone Hedge Drive, Lebanon South, Lebanon, Lebanon
County, Pennsylvania, United States, 17042

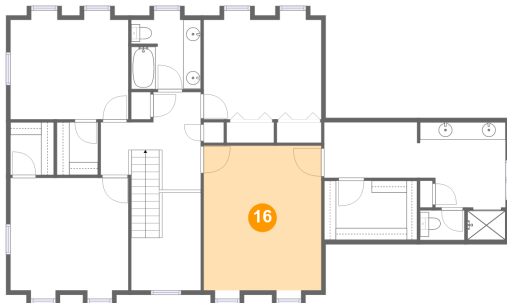
15 Floor 2 - Garage



Max Dimensions: 21'1" x 20'10"
Calculated Area: 440 sq. ft
Included: No

Heated: No
Finished: No
Enclosed: Yes
Contiguous: Yes
Permitted: Yes
Wet space: No
Addition: No
Conversion: No

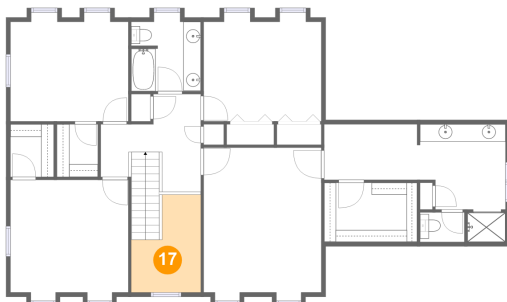
16 Floor 3 - Primary Bedroom



Max Dimensions: 13'5" x 16'6"
Calculated Area: 221 sq. ft
Included: Yes

Heated: Yes
Finished: Yes
Enclosed: Yes
Contiguous: Yes
Permitted: Yes
Wet space: No
Addition: No
Conversion: No

17 Floor 3 - Open To Below

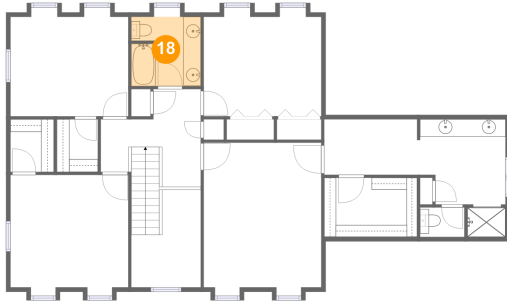


Max Dimensions: 7'11" x 11'2"
Calculated Area: 70 sq. ft
Included: No

Heated: No
Finished: No
Enclosed: No
Contiguous: Yes
Permitted: No
Wet space: No
Addition: No
Conversion: No

14 Stone Hedge Drive, Lebanon South, Lebanon, Lebanon
County, Pennsylvania, United States, 17042

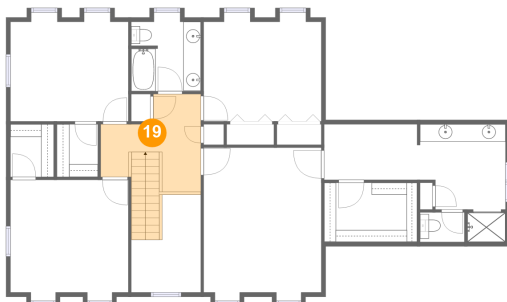
18 Floor 3 - Bath



Max Dimensions: 7'11" x 7'11"
Calculated Area: 62 sq. ft
Included: Yes

Heated: Yes
Finished: Yes
Enclosed: Yes
Contiguous: Yes
Permitted: Yes
Wet space: Yes
Addition: No
Conversion: No

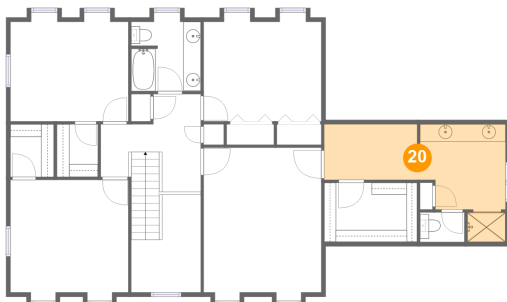
19 Floor 3 - Hall



Max Dimensions: 11'5" x 11'2"
Calculated Area: 121 sq. ft
Included: Yes

Heated: Yes
Finished: Yes
Enclosed: Yes
Contiguous: Yes
Permitted: Yes
Wet space: No
Addition: No
Conversion: No

20 Floor 3 - Bath

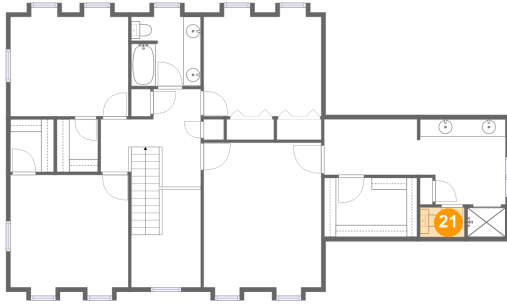


Max Dimensions: 20'8" x 13'5"
Calculated Area: 173 sq. ft
Included: Yes

Heated: Yes
Finished: Yes
Enclosed: Yes
Contiguous: Yes
Permitted: Yes
Wet space: Yes
Addition: No
Conversion: No

14 Stone Hedge Drive, Lebanon South, Lebanon, Lebanon
County, Pennsylvania, United States, 17042

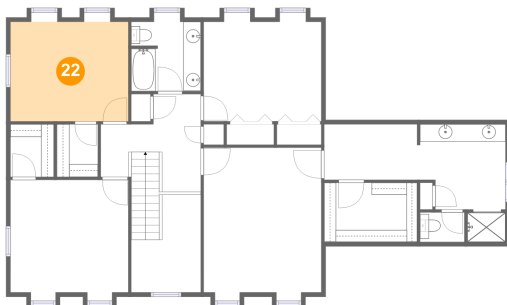
21 Floor 3 - WC



Max Dimensions: 5'1" x 3'4"
Calculated Area: 17 sq. ft
Included: Yes

Heated: Yes
Finished: Yes
Enclosed: Yes
Contiguous: Yes
Permitted: Yes
Wet space: Yes
Addition: No
Conversion: No

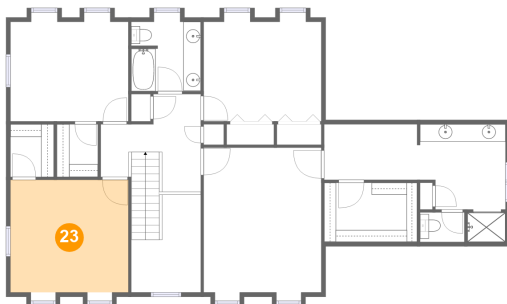
22 Floor 3 - Bedroom



Max Dimensions: 13'5" x 11'4"
Calculated Area: 153 sq. ft
Included: Yes

Heated: Yes
Finished: Yes
Enclosed: Yes
Contiguous: Yes
Permitted: Yes
Wet space: No
Addition: No
Conversion: No

23 Floor 3 - Bedroom

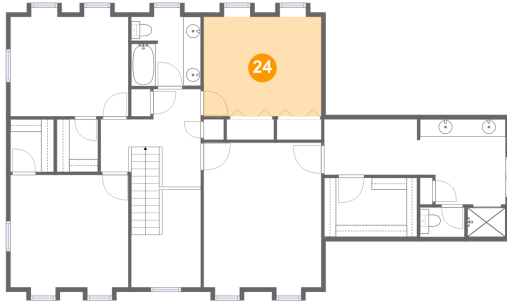


Max Dimensions: 13'5" x 12'10"
Calculated Area: 172 sq. ft
Included: Yes

Heated: Yes
Finished: Yes
Enclosed: Yes
Contiguous: Yes
Permitted: Yes
Wet space: No
Addition: No
Conversion: No

14 Stone Hedge Drive, Lebanon South, Lebanon, Lebanon
County, Pennsylvania, United States, 17042

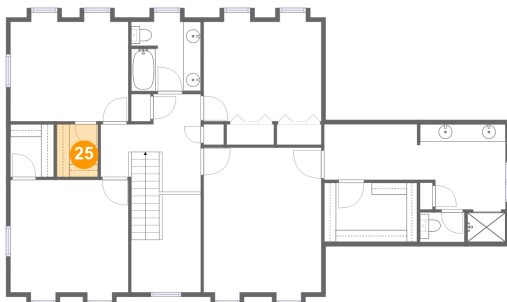
24 Floor 3 - Bedroom



Max Dimensions: 13'5" x 11'4"
Calculated Area: 152 sq. ft
Included: Yes

Heated: Yes
Finished: Yes
Enclosed: Yes
Contiguous: Yes
Permitted: Yes
Wet space: No
Addition: No
Conversion: No

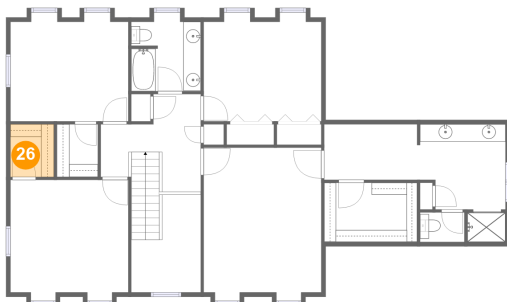
25 Floor 3 - W.I.C.



Max Dimensions: 4'8" x 6'0"
Calculated Area: 28 sq. ft
Included: Yes

Heated: Yes
Finished: Yes
Enclosed: Yes
Contiguous: Yes
Permitted: Yes
Wet space: No
Addition: No
Conversion: No

26 Floor 3 - W.I.C.

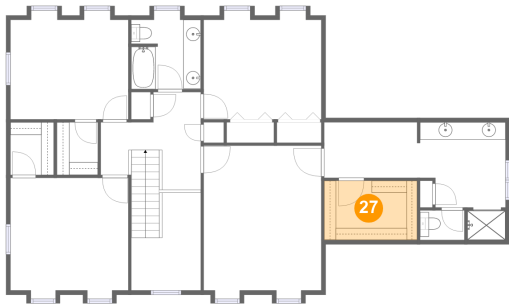


Max Dimensions: 4'11" x 6'0"
Calculated Area: 30 sq. ft
Included: Yes

Heated: Yes
Finished: Yes
Enclosed: Yes
Contiguous: Yes
Permitted: Yes
Wet space: No
Addition: No
Conversion: No

14 Stone Hedge Drive, Lebanon South, Lebanon, Lebanon
County, Pennsylvania, United States, 17042

27 Floor 3 - W.I.C.



Max Dimensions: 10'7" x 6'9"
Calculated Area: 72 sq. ft
Included: Yes

Heated: Yes
Finished: Yes
Enclosed: Yes
Contiguous: Yes
Permitted: Yes
Wet space: No
Addition: No
Conversion: No