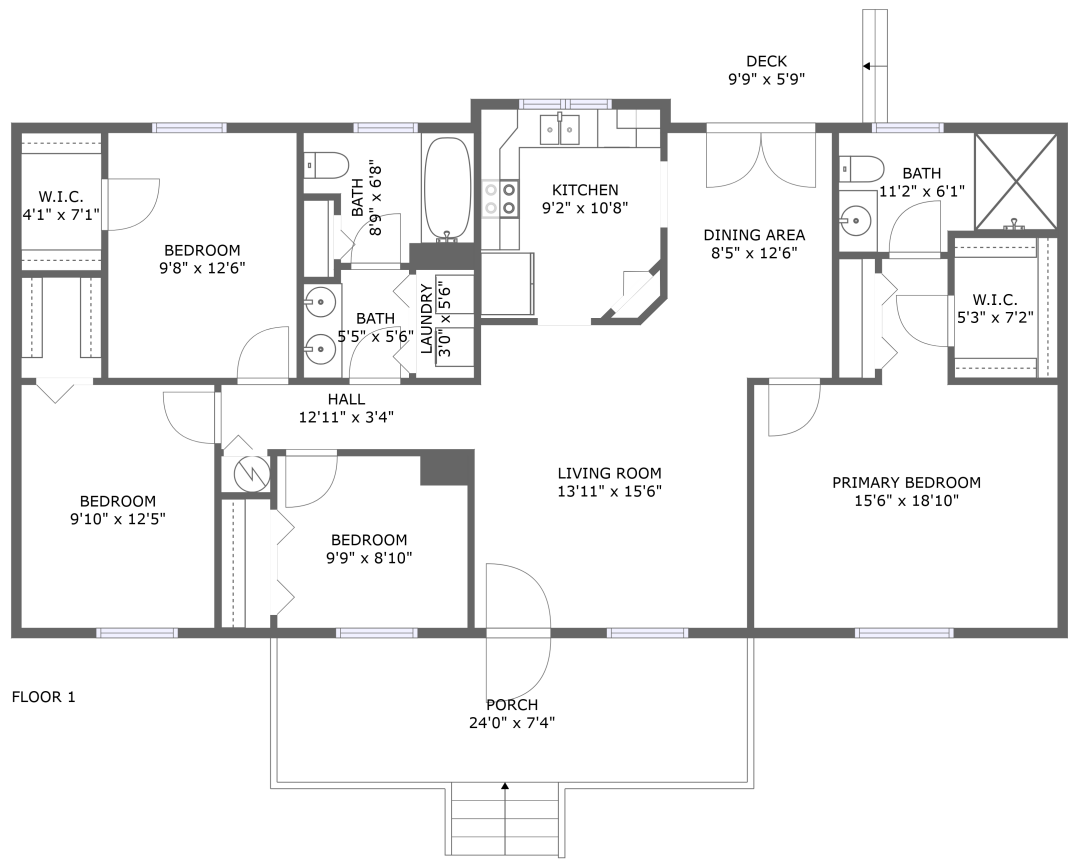


Home report

7170 Poage Valley Road, Roanoke, Virginia 24018, United States



Total GLA: 1430 sq. ft

Floor 1: 1430 sq. ft

Excluded: Porch 197 sq. ft, Deck 57 sq. ft

Property summary

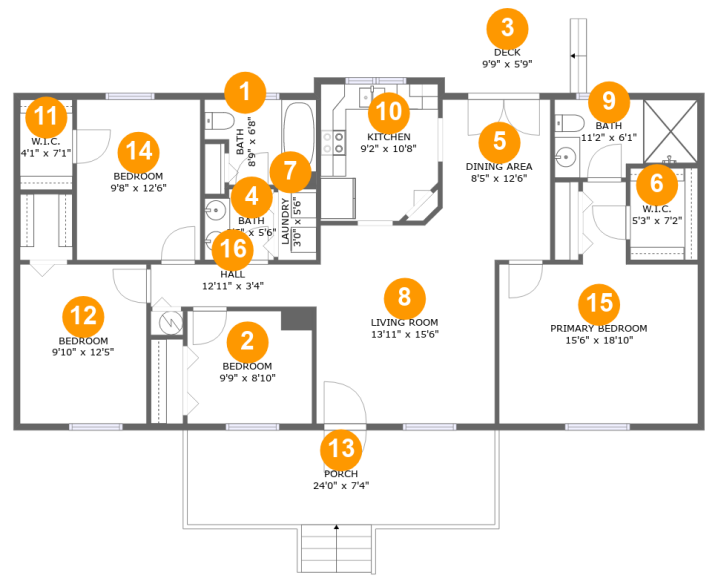
 **1** Floors

 **4** Bedrooms

 **2** Bathrooms

Home report

7170 Poage Valley Road, Roanoke, Virginia 24018, United States



Room dimensions

Floor 1 Total:1430sqft Excluded: 254sqft

#		Max Dimensions	sqft	Included
1	Bath	8'9" x 6'8"	51 sq. ft	Yes
2	Bedroom	9'9" x 8'10"	86 sq. ft	Yes
3	Deck	9'9" x 5'9"	57 sq. ft	No
4	Bath	5'5" x 5'6"	29 sq. ft	Yes
5	Dining Area	8'5" x 12'6"	97 sq. ft	Yes
6	W.I.C.	5'3" x 7'2"	38 sq. ft	Yes
7	Laundry	3'0" x 5'6"	17 sq. ft	Yes
8	Living Room	13'11" x 15'6"	213 sq. ft	Yes
9	Bath	11'2" x 6'1"	62 sq. ft	Yes
10	Kitchen	9'2" x 10'8"	94 sq. ft	Yes
11	W.I.C.	4'1" x 7'1"	29 sq. ft	Yes

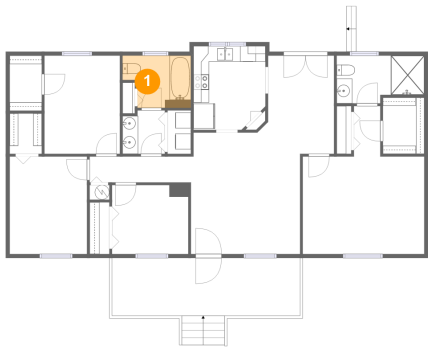
Home report

7170 Poage Valley Road, Roanoke, Virginia 24018, United States

#		Max Dimensions	sqft	Included
12	Bedroom	9'10" x 12'5"	123 sq. ft	Yes
13	Porch	24'0" x 7'4"	197 sq. ft	No
14	Bedroom	9'8" x 12'6"	121 sq. ft	Yes
15	Primary Bedroom	15'6" x 18'10"	215 sq. ft	Yes
16	Hall	12'11" x 3'4"	43 sq. ft	Yes

7170 Poage Valley Road, Roanoke, Virginia 24018, United States

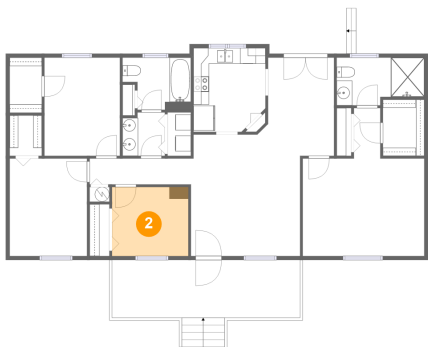
1 Floor 1 - Bath



Max Dimensions: 8'9" x 6'8"
Calculated Area: 51 sq. ft
Included: Yes

Heated: Yes
Finished: Yes
Enclosed: Yes
Contiguous: Yes
Permitted: Yes
Wet space: Yes
Addition: No
Conversion: No

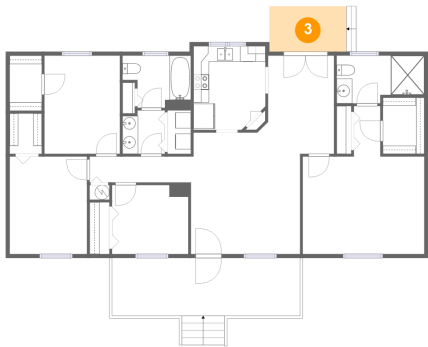
2 Floor 1 - Bedroom



Max Dimensions: 9'9" x 8'10"
Calculated Area: 86 sq. ft
Included: Yes

Heated: Yes
Finished: Yes
Enclosed: Yes
Contiguous: Yes
Permitted: Yes
Wet space: No
Addition: No
Conversion: No

3 Floor 1 - Deck



Max Dimensions: 9'9" x 5'9"
Calculated Area: 57 sq. ft
Included: No

Heated: No
Finished: Yes
Enclosed: No
Contiguous: Yes
Permitted: Yes
Wet space: No
Addition: No
Conversion: No

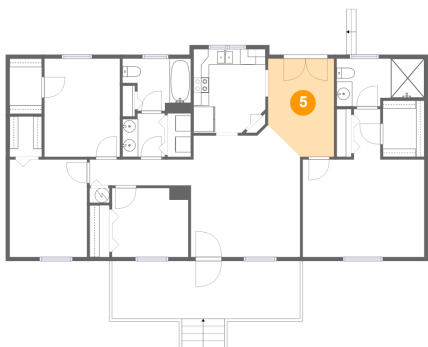
4 Floor 1 - Bath



Max Dimensions: 5'5" x 5'6"
Calculated Area: 29 sq. ft
Included: Yes

Heated: Yes
Finished: Yes
Enclosed: Yes
Contiguous: Yes
Permitted: Yes
Wet space: Yes
Addition: No
Conversion: No

5 Floor 1 - Dining Area



Max Dimensions: 8'5" x 12'6"
Calculated Area: 97 sq. ft
Included: Yes

Heated: Yes
Finished: Yes
Enclosed: Yes
Contiguous: Yes
Permitted: Yes
Wet space: No
Addition: No
Conversion: No

Home report

7170 Poage Valley Road, Roanoke, Virginia 24018, United States

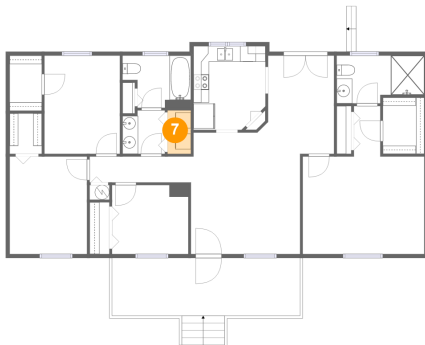
6 Floor 1 - W.I.C.



Max Dimensions: 5'3" x 7'2"
Calculated Area: 38 sq. ft
Included: Yes

Heated: Yes
Finished: Yes
Enclosed: Yes
Contiguous: Yes
Permitted: Yes
Wet space: No
Addition: No
Conversion: No

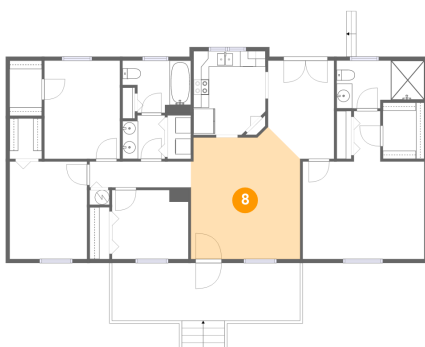
7 Floor 1 - Laundry



Max Dimensions: 3'0" x 5'6"
Calculated Area: 17 sq. ft
Included: Yes

Heated: Yes
Finished: Yes
Enclosed: Yes
Contiguous: Yes
Permitted: Yes
Wet space: No
Addition: No
Conversion: No

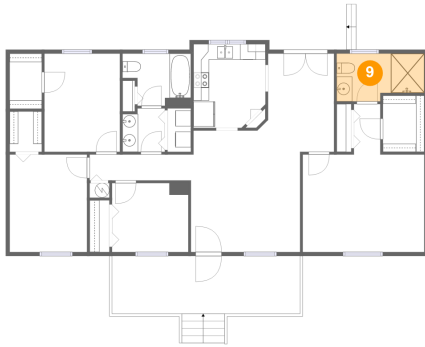
8 Floor 1 - Living Room



Max Dimensions: 13'11" x 15'6"
Calculated Area: 213 sq. ft
Included: Yes

Heated: Yes
Finished: Yes
Enclosed: Yes
Contiguous: Yes
Permitted: Yes
Wet space: No
Addition: No
Conversion: No

9 Floor 1 - Bath



Max Dimensions: 11'2" x 6'1"
Calculated Area: 62 sq. ft
Included: Yes

Heated: Yes
Finished: Yes
Enclosed: Yes
Contiguous: Yes
Permitted: Yes
Wet space: Yes
Addition: No
Conversion: No

10 Floor 1 - Kitchen



Max Dimensions: 9'2" x 10'8"
Calculated Area: 94 sq. ft
Included: Yes

Heated: Yes
Finished: Yes
Enclosed: Yes
Contiguous: Yes
Permitted: Yes
Wet space: No
Addition: No
Conversion: No

11 Floor 1 - W.I.C.

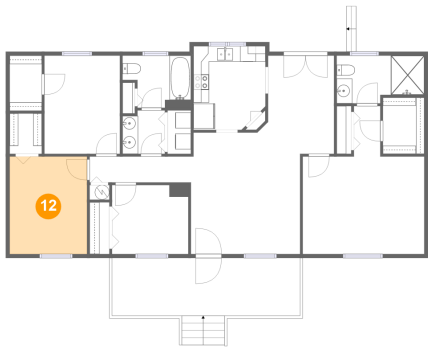


Max Dimensions: 4'1" x 7'1"
Calculated Area: 29 sq. ft
Included: Yes

Heated: Yes
Finished: Yes
Enclosed: Yes
Contiguous: Yes
Permitted: Yes
Wet space: No
Addition: No
Conversion: No

7170 Poage Valley Road, Roanoke, Virginia 24018, United States

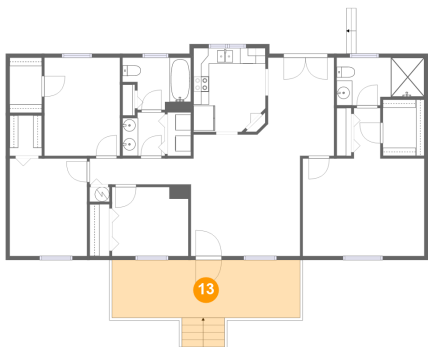
12 Floor 1 - Bedroom



Max Dimensions: 9'10" x 12'5"
Calculated Area: 123 sq. ft
Included: Yes

Heated: Yes
Finished: Yes
Enclosed: Yes
Contiguous: Yes
Permitted: Yes
Wet space: No
Addition: No
Conversion: No

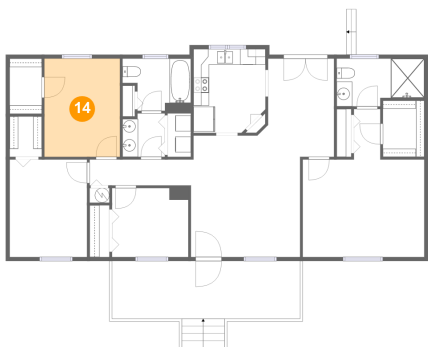
13 Floor 1 - Porch



Max Dimensions: 24'0" x 7'4"
Calculated Area: 197 sq. ft
Included: No

Heated: No
Finished: Yes
Enclosed: No
Contiguous: Yes
Permitted: Yes
Wet space: No
Addition: No
Conversion: No

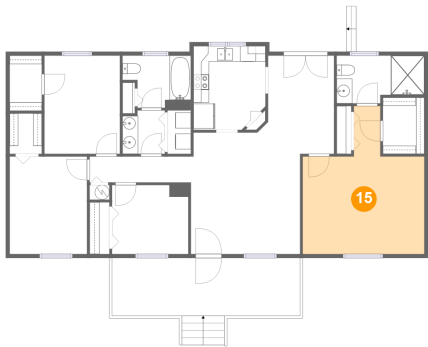
14 Floor 1 - Bedroom



Max Dimensions: 9'8" x 12'6"
Calculated Area: 121 sq. ft
Included: Yes

Heated: Yes
Finished: Yes
Enclosed: Yes
Contiguous: Yes
Permitted: Yes
Wet space: No
Addition: No
Conversion: No

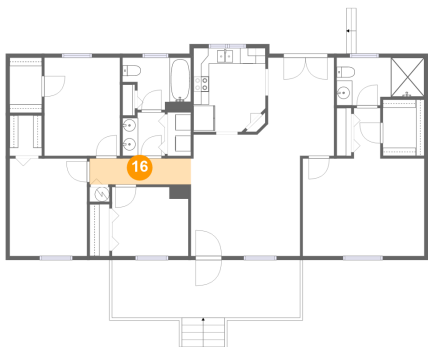
15 Floor 1 - Primary Bedroom



Max Dimensions: 15'6" x 18'10"
Calculated Area: 215 sq. ft
Included: Yes

Heated: Yes
Finished: Yes
Enclosed: Yes
Contiguous: Yes
Permitted: Yes
Wet space: No
Addition: No
Conversion: No

16 Floor 1 - Hall



Max Dimensions: 12'11" x 3'4"
Calculated Area: 43 sq. ft
Included: Yes

Heated: Yes
Finished: Yes
Enclosed: Yes
Contiguous: Yes
Permitted: Yes
Wet space: No
Addition: No
Conversion: No