

Home report

15502 Northwest Old Pumpkin Ridge Road, North Plains,
Washington County, Oregon, United States, 97133




Total Area: 2972 sq. ft

Below Ground: 1407 sq. ft, Floor 2: 1565 sq. ft

Excluded: Utility 81 sq. ft, Covered patio 619 sq. ft, Patio 395 sq. ft, Garage 534 sq. ft, Balcony 58 sq. ft, Walls: 230 sq. ft

Property summary

 **2** Floors

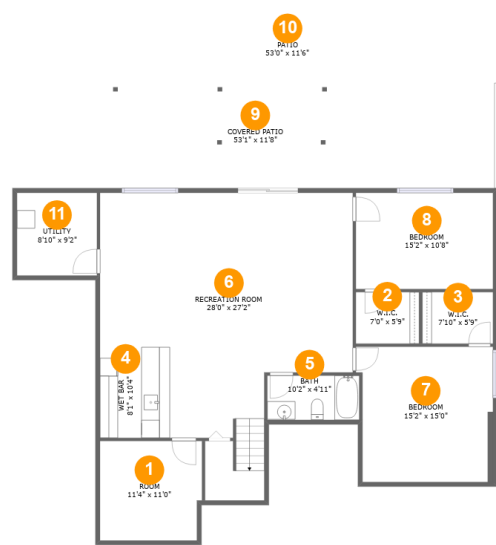
 **4** Bedrooms

 **3** Bathrooms

 **1** Garages

Home report

15502 Northwest Old Pumpkin Ridge Road, North Plains,
Washington County, Oregon, United States, 97133



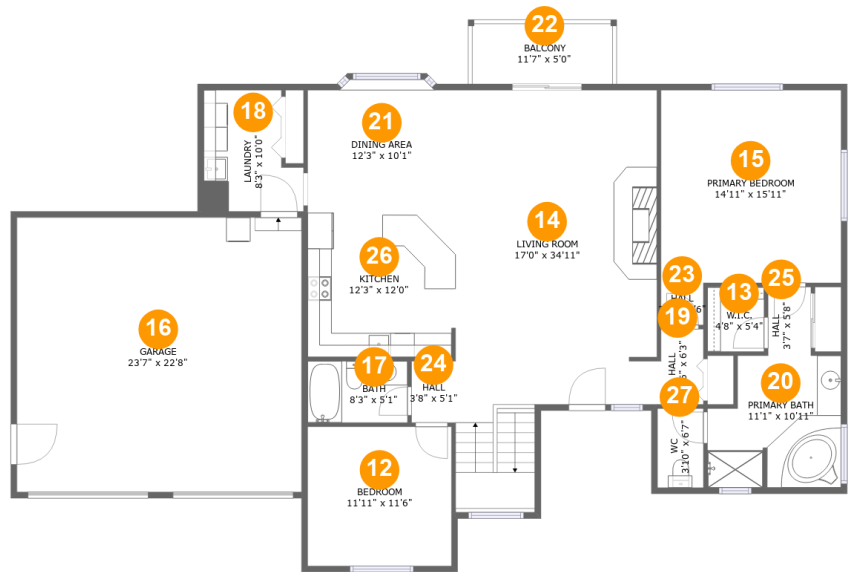
Room dimensions

Floor 1 Below ground Total:1407sqft Excluded: 1095sqft

#		Max Dimensions	sqft	Included
1	Room	11'4" x 11'0"	122 sq. ft	Yes
2	W.I.C.	7'0" x 5'9"	40 sq. ft	Yes
3	W.I.C.	7'10" x 5'9"	45 sq. ft	Yes
4	Wet Bar	8'1" x 10'4"	83 sq. ft	Yes
5	Bath	10'2" x 4'11"	50 sq. ft	Yes
6	Recreation Room	28'0" x 27'2"	648 sq. ft	Yes
7	Bedroom	15'2" x 15'0"	219 sq. ft	Yes
8	Bedroom	15'2" x 10'8"	162 sq. ft	Yes
9	Covered Patio	53'1" x 11'8"	619 sq. ft	No
10	Patio	53'0" x 11'6"	395 sq. ft	No
11	Utility	8'10" x 9'2"	81 sq. ft	No

Home report

15502 Northwest Old Pumpkin Ridge Road, North Plains,
Washington County, Oregon, United States, 97133



Room dimensions

Floor 2 Total:1565sqft Excluded: 592sqft

#		Max Dimensions	sqft	Included
12	Bedroom	11'11" x 11'6"	137 sq. ft	Yes
13	W.I.C.	4'8" x 5'4"	25 sq. ft	Yes
14	Living Room	17'0" x 34'11"	492 sq. ft	Yes
15	Primary Bedroom	14'11" x 15'11"	238 sq. ft	Yes
16	Garage	23'7" x 22'8"	534 sq. ft	No
17	Bath	8'3" x 5'1"	42 sq. ft	Yes
18	Laundry	8'3" x 10'0"	71 sq. ft	Yes
19	Hall	3'6" x 6'3"	22 sq. ft	Yes
20	Primary Bath	11'1" x 10'11"	109 sq. ft	Yes
21	Dining Area	12'3" x 10'1"	130 sq. ft	Yes
22	Balcony	11'7" x 5'0"	58 sq. ft	No

Home report

**15502 Northwest Old Pumpkin Ridge Road, North Plains,
Washington County, Oregon, United States, 97133**

#		Max Dimensions	sqft	Included
23	Hall	3'6" x 3'6"	12 sq. ft	Yes
24	Hall	3'8" x 5'1"	18 sq. ft	Yes
25	Hall	3'7" x 5'8"	20 sq. ft	Yes
26	Kitchen	12'3" x 12'0"	146 sq. ft	Yes
27	WC	3'10" x 6'7"	25 sq. ft	Yes

15502 Northwest Old Pumpkin Ridge Road, North Plains,
Washington County, Oregon, United States, 97133

1 Floor 1 - Room



Max Dimensions: 11'4" x 11'0"
Calculated Area: 122 sq. ft
Included: Yes

Heated: Yes
Finished: Yes
Enclosed: Yes
Contiguous: Yes
Permitted: Yes
Wet space: No
Addition: No
Conversion: No

2 Floor 1 - W.I.C.



Max Dimensions: 7'0" x 5'9"
Calculated Area: 40 sq. ft
Included: Yes

Heated: Yes
Finished: Yes
Enclosed: Yes
Contiguous: Yes
Permitted: Yes
Wet space: No
Addition: No
Conversion: No

15502 Northwest Old Pumpkin Ridge Road, North Plains,
Washington County, Oregon, United States, 97133

3 Floor 1 - W.I.C.



Max Dimensions: 7'10" x 5'9"
Calculated Area: 45 sq. ft
Included: Yes

Heated: Yes
Finished: Yes
Enclosed: Yes
Contiguous: Yes
Permitted: Yes
Wet space: No
Addition: No
Conversion: No

4 Floor 1 - Wet Bar



Max Dimensions: 8'1" x 10'4"
Calculated Area: 83 sq. ft
Included: Yes

Heated: Yes
Finished: Yes
Enclosed: Yes
Contiguous: Yes
Permitted: Yes
Wet space: No
Addition: No
Conversion: No

5 Floor 1 - Bath

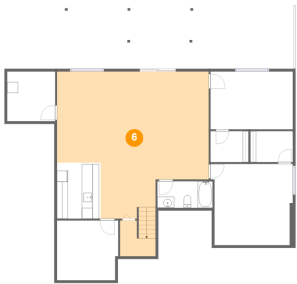


Max Dimensions: 10'2" x 4'11"
Calculated Area: 50 sq. ft
Included: Yes

Heated: Yes
Finished: Yes
Enclosed: Yes
Contiguous: Yes
Permitted: Yes
Wet space: Yes
Addition: No
Conversion: No

15502 Northwest Old Pumpkin Ridge Road, North Plains,
Washington County, Oregon, United States, 97133

6 Floor 1 - Recreation Room



Max Dimensions: 28'0" x 27'2"
Calculated Area: 648 sq. ft
Included: Yes

Heated: Yes
Finished: Yes
Enclosed: Yes
Contiguous: Yes
Permitted: Yes
Wet space: No
Addition: No
Conversion: No

7 Floor 1 - Bedroom



Max Dimensions: 15'2" x 15'0"
Calculated Area: 219 sq. ft
Included: Yes

Heated: Yes
Finished: Yes
Enclosed: Yes
Contiguous: Yes
Permitted: Yes
Wet space: No
Addition: No
Conversion: No

8 Floor 1 - Bedroom

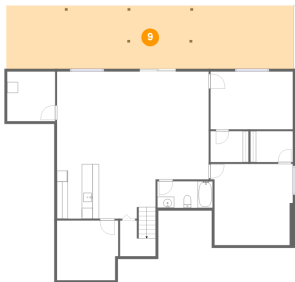


Max Dimensions: 15'2" x 10'8"
Calculated Area: 162 sq. ft
Included: Yes

Heated: Yes
Finished: Yes
Enclosed: Yes
Contiguous: Yes
Permitted: Yes
Wet space: No
Addition: No
Conversion: No

15502 Northwest Old Pumpkin Ridge Road, North Plains,
Washington County, Oregon, United States, 97133

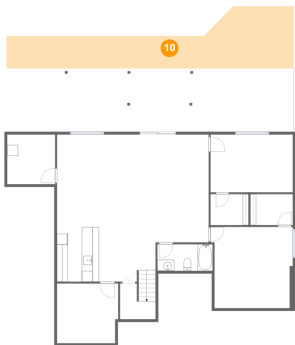
9 Floor 1 - Covered Patio



Max Dimensions: 53'1" x 11'8"
Calculated Area: 619 sq. ft
Included: No

Heated: No
Finished: Yes
Enclosed: No
Contiguous: Yes
Permitted: Yes
Wet space: No
Addition: No
Conversion: No

10 Floor 1 - Patio



Max Dimensions: 53'0" x 11'6"
Calculated Area: 395 sq. ft
Included: No

Heated: No
Finished: Yes
Enclosed: No
Contiguous: Yes
Permitted: Yes
Wet space: No
Addition: No
Conversion: No

11 Floor 1 - Utility



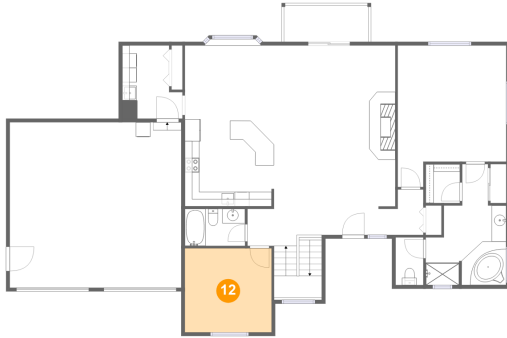
Max Dimensions: 8'10" x 9'2"
Calculated Area: 81 sq. ft
Included: No

Heated: Yes
Finished: No
Enclosed: Yes
Contiguous: Yes
Permitted: Yes
Wet space: No
Addition: No
Conversion: No

Home report

15502 Northwest Old Pumpkin Ridge Road, North Plains,
Washington County, Oregon, United States, 97133

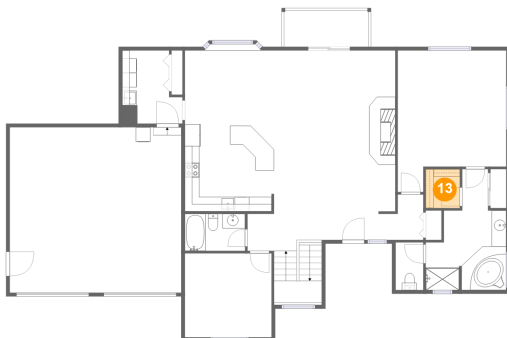
12 Floor 2 - Bedroom



Max Dimensions: 11'11" x 11'6"
Calculated Area: 137 sq. ft
Included: Yes

Heated: Yes
Finished: Yes
Enclosed: Yes
Contiguous: Yes
Permitted: Yes
Wet space: No
Addition: No
Conversion: No

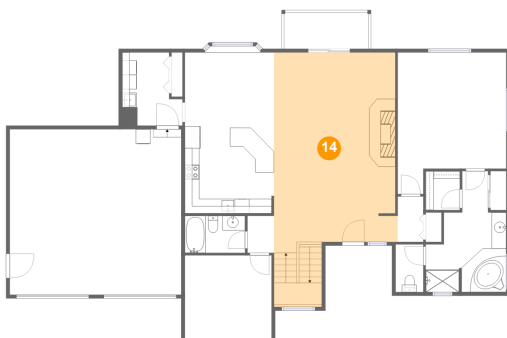
13 Floor 2 - W.I.C.



Max Dimensions: 4'8" x 5'4"
Calculated Area: 25 sq. ft
Included: Yes

Heated: Yes
Finished: Yes
Enclosed: Yes
Contiguous: Yes
Permitted: Yes
Wet space: No
Addition: No
Conversion: No

14 Floor 2 - Living Room

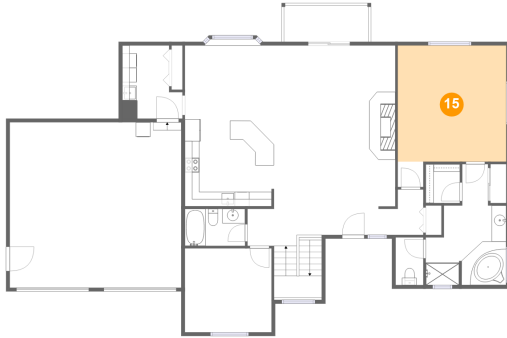


Max Dimensions: 17'0" x 34'11"
Calculated Area: 492 sq. ft
Included: Yes

Heated: Yes
Finished: Yes
Enclosed: Yes
Contiguous: Yes
Permitted: Yes
Wet space: No
Addition: No
Conversion: No

15502 Northwest Old Pumpkin Ridge Road, North Plains,
Washington County, Oregon, United States, 97133

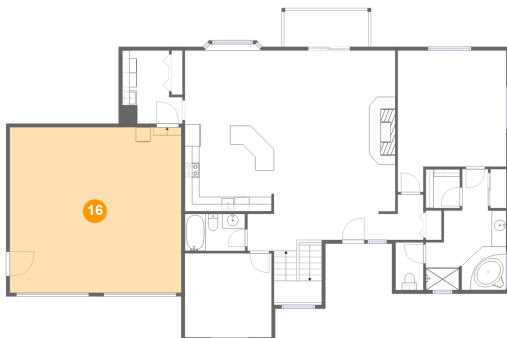
15 Floor 2 - Primary Bedroom



Max Dimensions: 14'11" x 15'11"
Calculated Area: 238 sq. ft
Included: Yes

Heated: Yes
Finished: Yes
Enclosed: Yes
Contiguous: Yes
Permitted: Yes
Wet space: No
Addition: No
Conversion: No

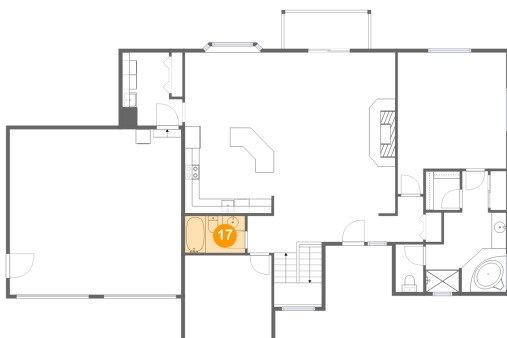
16 Floor 2 - Garage



Max Dimensions: 23'7" x 22'8"
Calculated Area: 534 sq. ft
Included: No

Heated: No
Finished: No
Enclosed: Yes
Contiguous: Yes
Permitted: Yes
Wet space: No
Addition: No
Conversion: No

17 Floor 2 - Bath



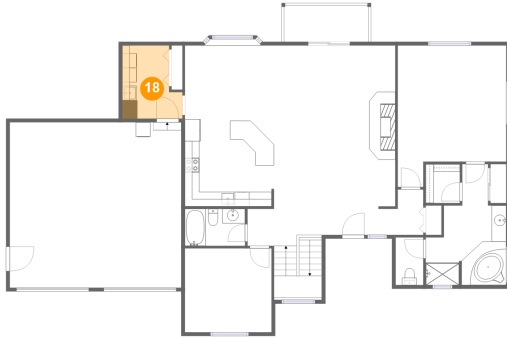
Max Dimensions: 8'3" x 5'1"
Calculated Area: 42 sq. ft
Included: Yes

Heated: Yes
Finished: Yes
Enclosed: Yes
Contiguous: Yes
Permitted: Yes
Wet space: Yes
Addition: No
Conversion: No

Home report

15502 Northwest Old Pumpkin Ridge Road, North Plains,
Washington County, Oregon, United States, 97133

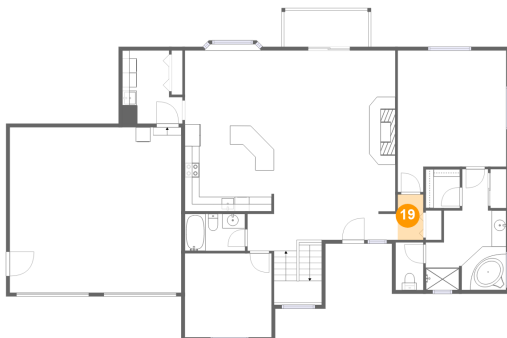
18 Floor 2 - Laundry



Max Dimensions: 8'3" x 10'0"
Calculated Area: 71 sq. ft
Included: Yes

Heated: Yes
Finished: Yes
Enclosed: Yes
Contiguous: Yes
Permitted: Yes
Wet space: No
Addition: No
Conversion: No

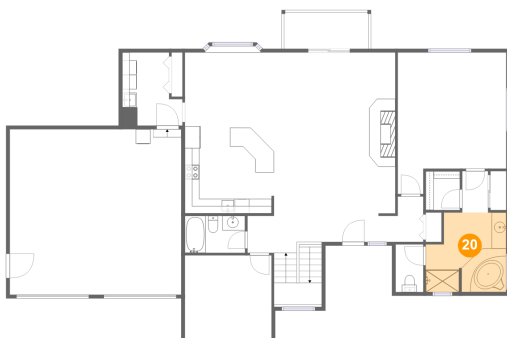
19 Floor 2 - Hall



Max Dimensions: 3'6" x 6'3"
Calculated Area: 22 sq. ft
Included: Yes

Heated: Yes
Finished: Yes
Enclosed: Yes
Contiguous: Yes
Permitted: Yes
Wet space: No
Addition: No
Conversion: No

20 Floor 2 - Primary Bath

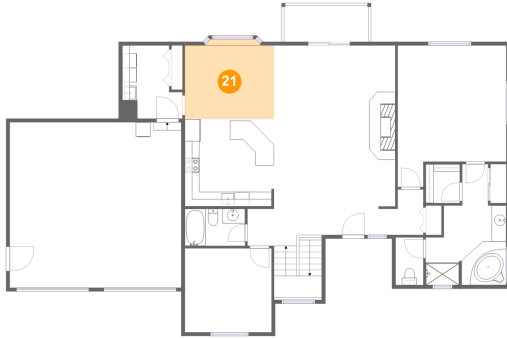


Max Dimensions: 11'1" x 10'11"
Calculated Area: 109 sq. ft
Included: Yes

Heated: Yes
Finished: Yes
Enclosed: Yes
Contiguous: Yes
Permitted: Yes
Wet space: Yes
Addition: No
Conversion: No

15502 Northwest Old Pumpkin Ridge Road, North Plains,
Washington County, Oregon, United States, 97133

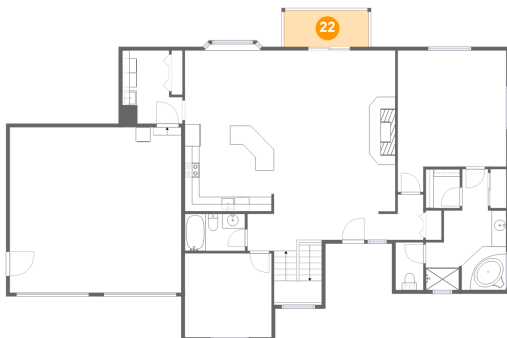
21 Floor 2 - Dining Area



Max Dimensions: 12'3" x 10'1"
Calculated Area: 130 sq. ft
Included: Yes

Heated: Yes
Finished: Yes
Enclosed: Yes
Contiguous: Yes
Permitted: Yes
Wet space: No
Addition: No
Conversion: No

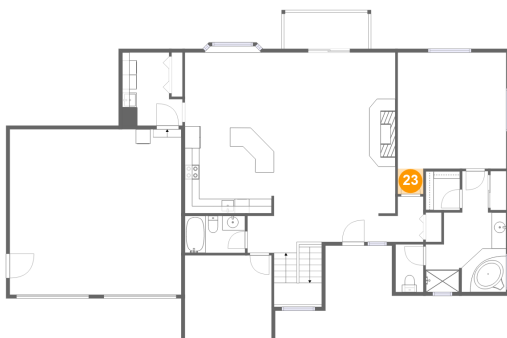
22 Floor 2 - Balcony



Max Dimensions: 11'7" x 5'0"
Calculated Area: 58 sq. ft
Included: No

Heated: No
Finished: Yes
Enclosed: No
Contiguous: Yes
Permitted: Yes
Wet space: No
Addition: No
Conversion: No

23 Floor 2 - Hall

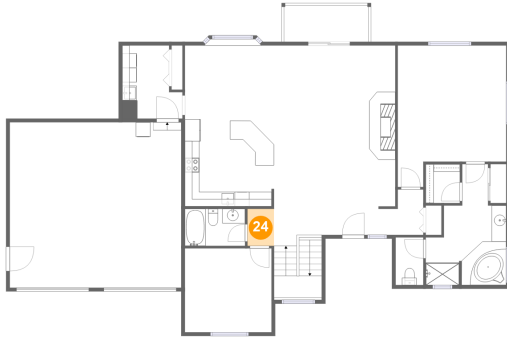


Max Dimensions: 3'6" x 3'6"
Calculated Area: 12 sq. ft
Included: Yes

Heated: Yes
Finished: Yes
Enclosed: Yes
Contiguous: Yes
Permitted: Yes
Wet space: No
Addition: No
Conversion: No

15502 Northwest Old Pumpkin Ridge Road, North Plains,
Washington County, Oregon, United States, 97133

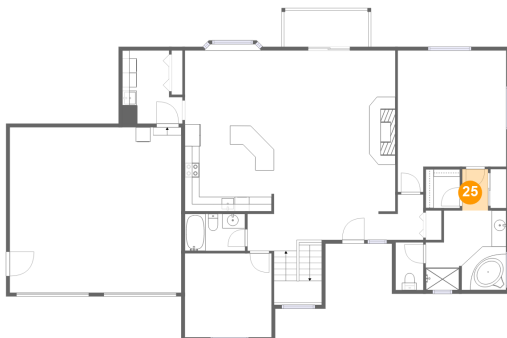
24 Floor 2 - Hall



Max Dimensions: 3'8" x 5'1"
Calculated Area: 18 sq. ft
Included: Yes

Heated: Yes
Finished: Yes
Enclosed: Yes
Contiguous: Yes
Permitted: Yes
Wet space: No
Addition: No
Conversion: No

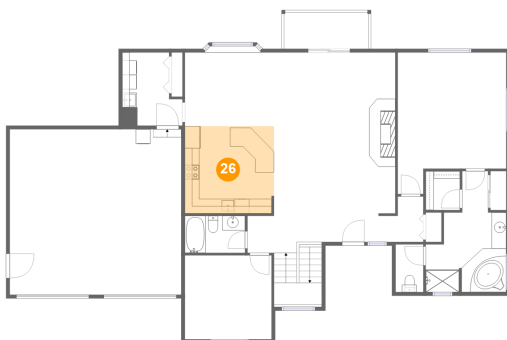
25 Floor 2 - Hall



Max Dimensions: 3'7" x 5'8"
Calculated Area: 20 sq. ft
Included: Yes

Heated: Yes
Finished: Yes
Enclosed: Yes
Contiguous: Yes
Permitted: Yes
Wet space: No
Addition: No
Conversion: No

26 Floor 2 - Kitchen

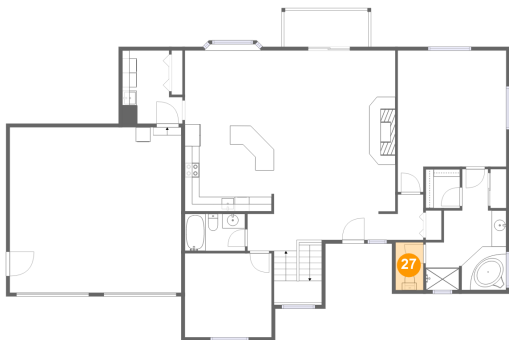


Max Dimensions: 12'3" x 12'0"
Calculated Area: 146 sq. ft
Included: Yes

Heated: Yes
Finished: Yes
Enclosed: Yes
Contiguous: Yes
Permitted: Yes
Wet space: No
Addition: No
Conversion: No

15502 Northwest Old Pumpkin Ridge Road, North Plains,
Washington County, Oregon, United States, 97133

27 Floor 2 - WC



Max Dimensions: 3'10" x 6'7"
Calculated Area: 25 sq. ft
Included: Yes

Heated: Yes
Finished: Yes
Enclosed: Yes
Contiguous: Yes
Permitted: Yes
Wet space: Yes
Addition: No
Conversion: No