


5254 Roselawn Road, Canterbury Park, Cave Spring,
Roanoke, Roanoke County, Virginia, United States,



Property summary

 **0**
Garages

 **3**
Bedrooms

 **2**
Bathrooms

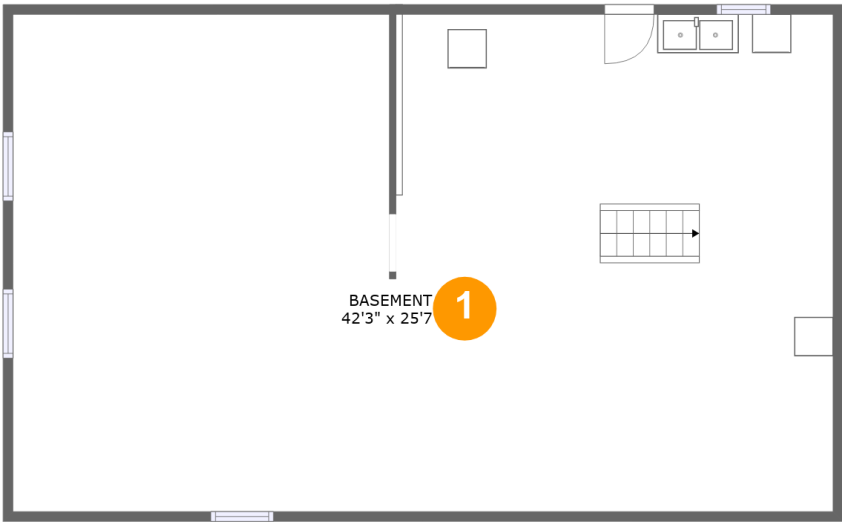
 **0**
Half baths

 **2**
Floors

 **1,480**
Gross living
area sqft

 **3,341**
Total sqft

5254 Roselawn Road, Canterbury Park, Cave Spring,
Roanoke, Roanoke County, Virginia, United States,

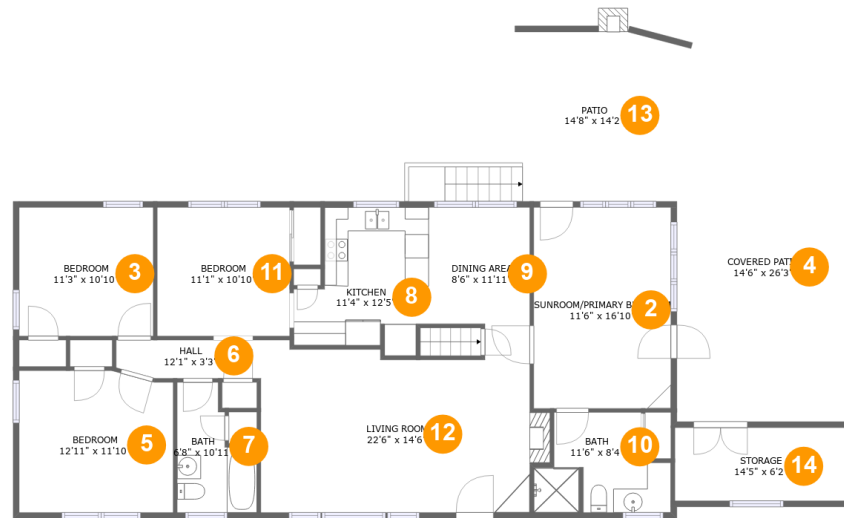


Room dimensions

Floor 1 Total sqft: 1150 Living area: 0

#		Dimensions	sqft	Counted as living area
1	Basement	42'3" x 25'7"	1076 sq. ft	No

5254 Roselawn Road, Canterbury Park, Cave Spring, Roanoke, Roanoke County, Virginia, United States,



Room dimensions

Floor 2

Total sqft: 2191

Living area: 1480

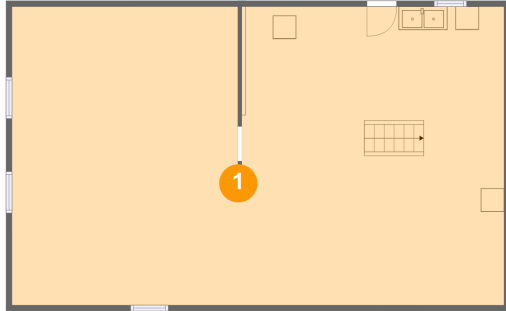
#		Dimensions	sqft	Counted as living area
2	SUNROOM/PRIMARY Bedroom	11'6" x 16'10"	194 sq. ft	Yes
3	Bedroom	11'3" x 10'10"	121 sq. ft	Yes
4	Covered Patio	14'6" x 26'3"	383 sq. ft	No
5	Bedroom	12'11" x 11'10"	151 sq. ft	Yes
6	Hall	12'1" x 3'3"	38 sq. ft	Yes
7	Bath	6'8" x 10'11"	57 sq. ft	Yes
8	Kitchen	11'4" x 12'5"	113 sq. ft	Yes
9	Dining Area	8'6" x 11'11"	91 sq. ft	Yes
10	Bath	11'6" x 8'4"	77 sq. ft	Yes
11	Bedroom	11'1" x 10'10"	120 sq. ft	Yes

**5254 Roselawn Road, Canterbury Park, Cave Spring,
Roanoke, Roanoke County, Virginia, United States,**

#		Dimensions	sqft	Counted as living area
12	Living Room	22'6" x 14'6"	310 sq. ft	Yes
13	Patio	14'8" x 14'2"	222 sq. ft	No
14	Storage	14'5" x 6'2"	89 sq. ft	No

**5254 Roselawn Road, Canterbury Park, Cave Spring,
Roanoke, Roanoke County, Virginia, United States,**

1 Floor 1 - Basement



Dimensions: 42'3" x 25'7"
Area: 1076 sq. ft
Counted as living area: No

Heated: Yes
Finished: No
Enclosed: Yes
Contiguous: Yes
Permitted: Yes
Wet space: No
Addition: No
Conversion: No

2 Floor 2 - SUNROOM/PRIMARY Bedroom



Dimensions: 11'6" x 16'10"
Area: 194 sq. ft
Counted as living area: Yes

Heated: Yes
Finished: Yes
Enclosed: Yes
Contiguous: Yes
Permitted: Yes
Wet space: No
Addition: No
Conversion: No

5254 Roselawn Road, Canterbury Park, Cave Spring,
Roanoke, Roanoke County, Virginia, United States,

3 Floor 2 - Bedroom



Dimensions: 11'3" x 10'10"
Area: 121 sq. ft
Counted as living area: Yes

Heated: Yes
Finished: Yes
Enclosed: Yes
Contiguous: Yes
Permitted: Yes
Wet space: No
Addition: No
Conversion: No

4 Floor 2 - Covered Patio



Dimensions: 14'6" x 26'3"
Area: 383 sq. ft
Counted as living area: No

Heated: No
Finished: Yes
Enclosed: No
Contiguous: Yes
Permitted: Yes
Wet space: No
Addition: No
Conversion: No

5 Floor 2 - Bedroom



Dimensions: 12'11" x 11'10"
Area: 151 sq. ft
Counted as living area: Yes

Heated: Yes
Finished: Yes
Enclosed: Yes
Contiguous: Yes
Permitted: Yes
Wet space: No
Addition: No
Conversion: No

5254 Roselawn Road, Canterbury Park, Cave Spring,
Roanoke, Roanoke County, Virginia, United States,

6 Floor 2 - Hall



Dimensions: 12'1" x 3'3"
Area: 38 sq. ft
Counted as living area: Yes

Heated: Yes
Finished: Yes
Enclosed: Yes
Contiguous: Yes
Permitted: Yes
Wet space: No
Addition: No
Conversion: No

7 Floor 2 - Bath



Dimensions: 6'8" x 10'11"
Area: 57 sq. ft
Counted as living area: Yes

Heated: Yes
Finished: Yes
Enclosed: Yes
Contiguous: Yes
Permitted: Yes
Wet space: Yes
Addition: No
Conversion: No

8 Floor 2 - Kitchen



Dimensions: 11'4" x 12'5"
Area: 113 sq. ft
Counted as living area: Yes

Heated: Yes
Finished: Yes
Enclosed: Yes
Contiguous: Yes
Permitted: Yes
Wet space: No
Addition: No
Conversion: No

**5254 Roselawn Road, Canterbury Park, Cave Spring,
Roanoke, Roanoke County, Virginia, United States,**

9 Floor 2 - Dining Area



Dimensions: 8'6" x 11'11"
Area: 91 sq. ft
Counted as living area: Yes

Heated: Yes
Finished: Yes
Enclosed: Yes
Contiguous: Yes
Permitted: Yes
Wet space: No
Addition: No
Conversion: No

10 Floor 2 - Bath



Dimensions: 11'6" x 8'4"
Area: 77 sq. ft
Counted as living area: Yes

Heated: Yes
Finished: Yes
Enclosed: Yes
Contiguous: Yes
Permitted: Yes
Wet space: Yes
Addition: No
Conversion: No

11 Floor 2 - Bedroom

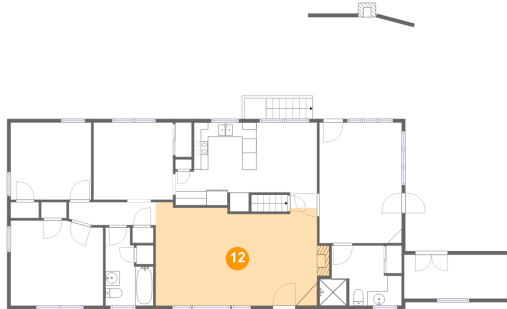


Dimensions: 11'1" x 10'10"
Area: 120 sq. ft
Counted as living area: Yes

Heated: Yes
Finished: Yes
Enclosed: Yes
Contiguous: Yes
Permitted: Yes
Wet space: No
Addition: No
Conversion: No

**5254 Roselawn Road, Canterbury Park, Cave Spring,
Roanoke, Roanoke County, Virginia, United States,**

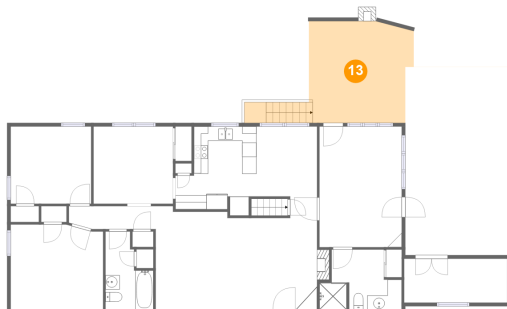
12 Floor 2 - Living Room



Dimensions: 22'6" x 14'6"
Area: 310 sq. ft
Counted as living area: Yes

Heated: Yes
Finished: Yes
Enclosed: Yes
Contiguous: Yes
Permitted: Yes
Wet space: No
Addition: No
Conversion: No

13 Floor 2 - Patio



Dimensions: 14'8" x 14'2"
Area: 222 sq. ft
Counted as living area: No

Heated: No
Finished: Yes
Enclosed: No
Contiguous: Yes
Permitted: Yes
Wet space: No
Addition: No
Conversion: No

14 Floor 2 - Storage



Dimensions: 14'5" x 6'2"
Area: 89 sq. ft
Counted as living area: No

Heated: No
Finished: No
Enclosed: No
Contiguous: Yes
Permitted: Yes
Wet space: No
Addition: No
Conversion: No