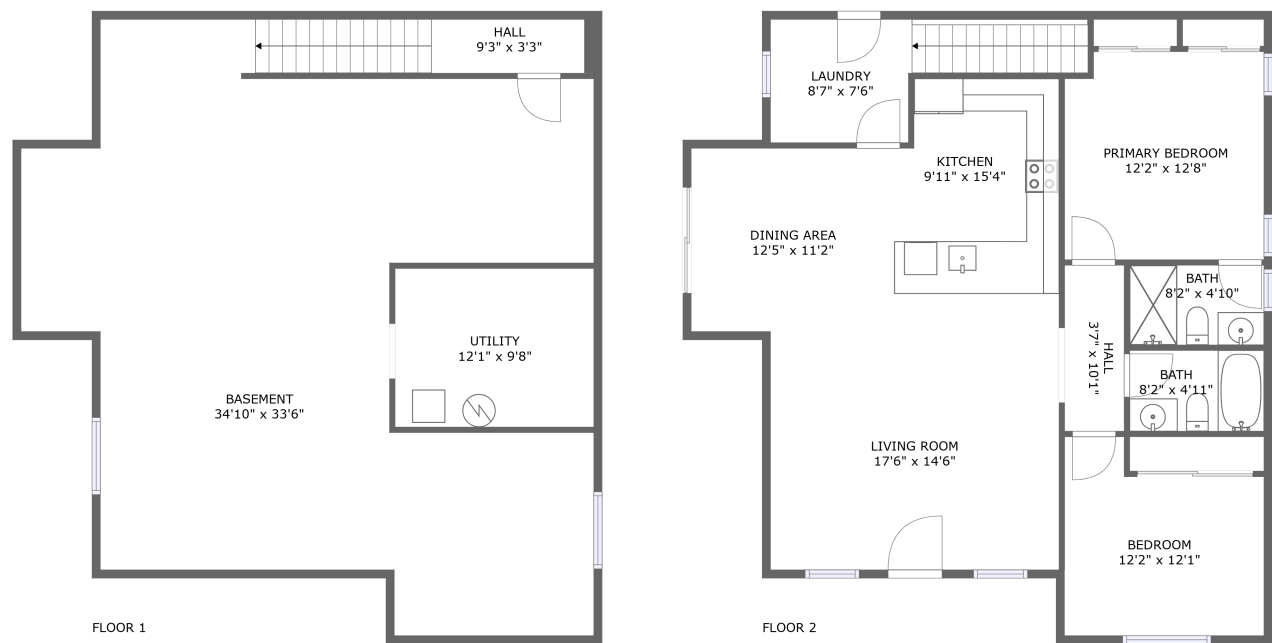


Home report

2185 Pony Ct, Iron Mountain, WY, US



Total Area: 1144 sq. ft

Below Ground: 36 sq. ft, Floor 2: 1108 sq. ft

Excluded: Utility 128 sq. ft, Basement 944 sq. ft, Walls: 147 sq. ft

Property summary

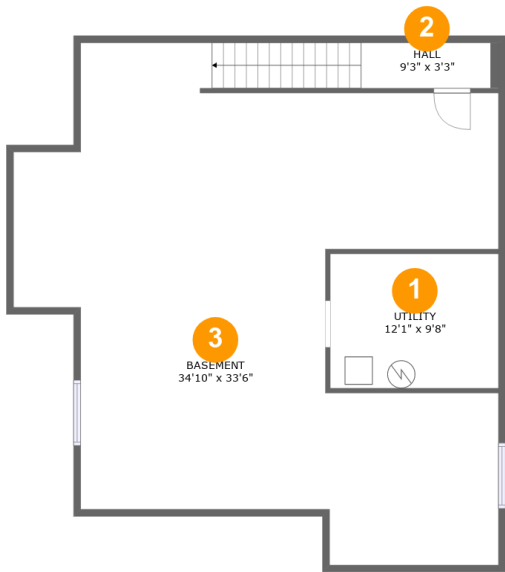
 **2** Floors

 **2** Bedrooms

 **2** Bathrooms

Home report

2185 Pony Ct,Iron Mountain,WY,US



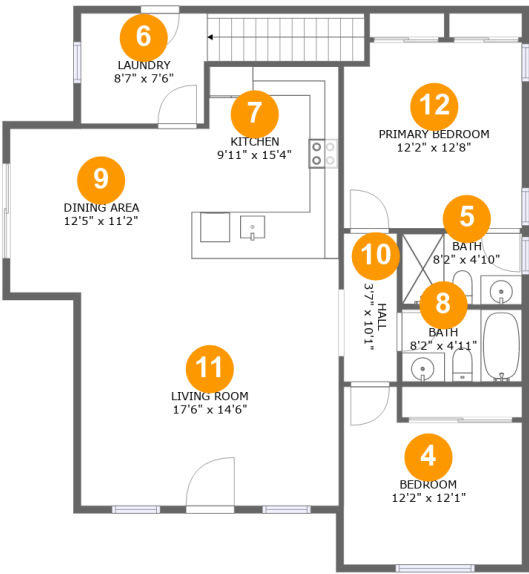
Room dimensions

Floor 1 Below ground Total:36sqft Excluded: 1072sqft

#		Max Dimensions	sqft	Included
1	Utility	12'1" x 9'8"	117 sq. ft	No
2	Hall	9'3" x 3'3"	32 sq. ft	Yes
3	Basement	34'10" x 33'6"	940 sq. ft	No

Home report

2185 Pony Ct,Iron Mountain,WY,US



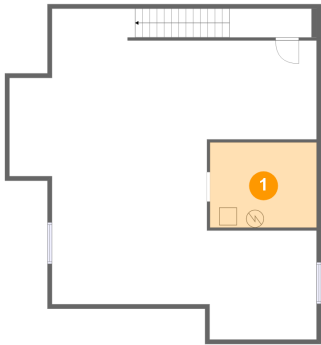
Room dimensions

Floor 2

Total:1108sqft Excluded: 0sqft

#		Max Dimensions	sqft	Included
4	Bedroom	12'2" x 12'1"	126 sq. ft	Yes
5	Bath	8'2" x 4'10"	40 sq. ft	Yes
6	Laundry	8'7" x 7'6"	99 sq. ft	Yes
7	Kitchen	9'11" x 15'4"	148 sq. ft	Yes
8	Bath	8'2" x 4'11"	40 sq. ft	Yes
9	Dining Area	12'5" x 11'2"	138 sq. ft	Yes
10	Hall	3'7" x 10'1"	37 sq. ft	Yes
11	Living Room	17'6" x 14'6"	255 sq. ft	Yes
12	Primary Bedroom	12'2" x 12'8"	151 sq. ft	Yes

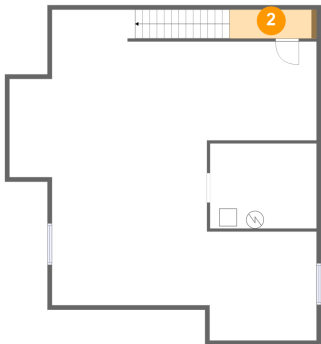
1 Floor 1 - Utility



Max Dimensions: 12'1" x 9'8"
Calculated Area: 117 sq. ft
Included: No

Heated: Yes
Finished: No
Enclosed: Yes
Contiguous: Yes
Permitted: Yes
Wet space: No
Addition: No
Conversion: No

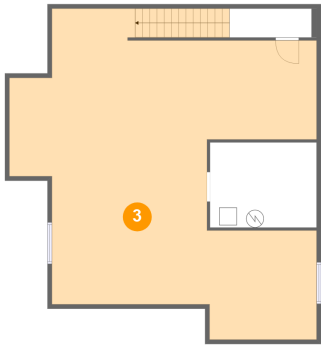
2 Floor 1 - Hall



Max Dimensions: 9'3" x 3'3"
Calculated Area: 32 sq. ft
Included: No

Heated: Yes
Finished: Yes
Enclosed: Yes
Contiguous: No
Permitted: Yes
Wet space: No
Addition: No
Conversion: No

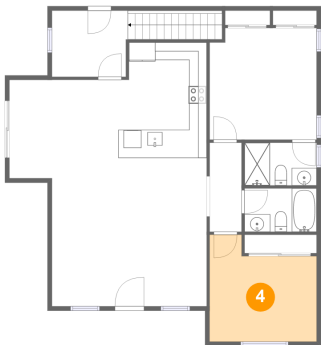
3 Floor 1 - Basement



Max Dimensions: 34'10" x 33'6"
Calculated Area: 940 sq. ft
Included: No

Heated: Yes
Finished: No
Enclosed: Yes
Contiguous: Yes
Permitted: Yes
Wet space: No
Addition: No
Conversion: No

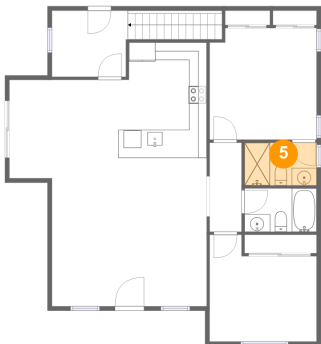
4 Floor 2 - Bedroom



Max Dimensions: 12'2" x 12'1"
Calculated Area: 126 sq. ft
Included: Yes

Heated: Yes
Finished: Yes
Enclosed: Yes
Contiguous: Yes
Permitted: Yes
Wet space: No
Addition: No
Conversion: No

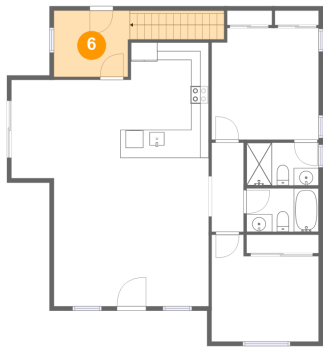
5 Floor 2 - Bath



Max Dimensions: 8'2" x 4'10"
Calculated Area: 40 sq. ft
Included: Yes

Heated: Yes
Finished: Yes
Enclosed: Yes
Contiguous: Yes
Permitted: Yes
Wet space: Yes
Addition: No
Conversion: No

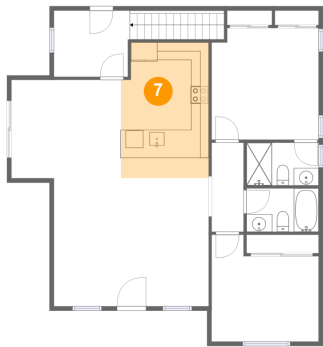
6 Floor 2 - Laundry



Max Dimensions: 8'7" x 7'6"
Calculated Area: 99 sq. ft
Included: Yes

Heated: Yes
Finished: Yes
Enclosed: Yes
Contiguous: Yes
Permitted: Yes
Wet space: No
Addition: No
Conversion: No

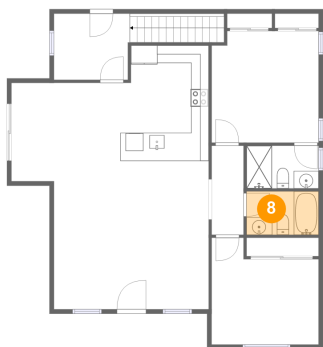
7 Floor 2 - Kitchen



Max Dimensions: 9'11" x 15'4"
Calculated Area: 148 sq. ft
Included: Yes

Heated: Yes
Finished: Yes
Enclosed: Yes
Contiguous: Yes
Permitted: Yes
Wet space: No
Addition: No
Conversion: No

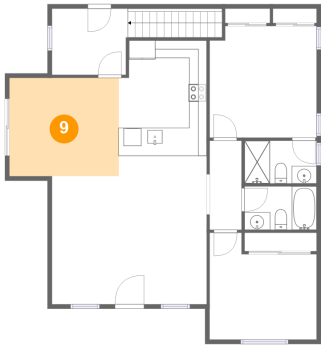
8 Floor 2 - Bath



Max Dimensions: 8'2" x 4'11"
Calculated Area: 40 sq. ft
Included: Yes

Heated: Yes
Finished: Yes
Enclosed: Yes
Contiguous: Yes
Permitted: Yes
Wet space: Yes
Addition: No
Conversion: No

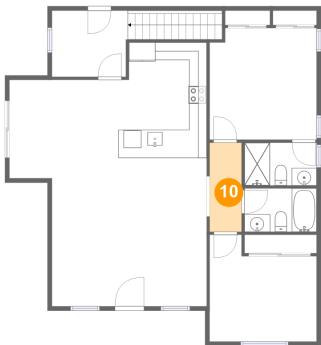
9 Floor 2 - Dining Area



Max Dimensions: 12'5" x 11'2"
Calculated Area: 138 sq. ft
Included: Yes

Heated: Yes
Finished: Yes
Enclosed: Yes
Contiguous: Yes
Permitted: Yes
Wet space: No
Addition: No
Conversion: No

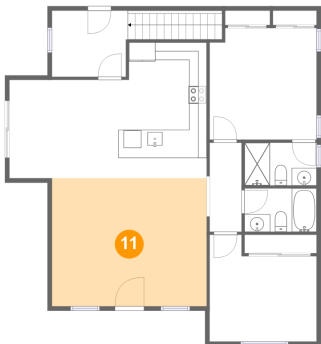
10 Floor 2 - Hall



Max Dimensions: 3'7" x 10'1"
Calculated Area: 37 sq. ft
Included: Yes

Heated: Yes
Finished: Yes
Enclosed: Yes
Contiguous: Yes
Permitted: Yes
Wet space: No
Addition: No
Conversion: No

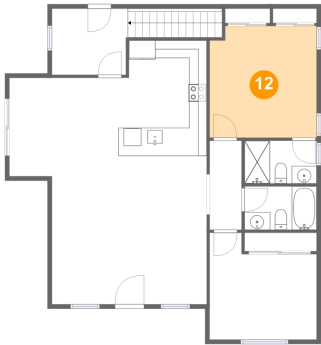
11 Floor 2 - Living Room



Max Dimensions: 17'6" x 14'6"
Calculated Area: 255 sq. ft
Included: Yes

Heated: Yes
Finished: Yes
Enclosed: Yes
Contiguous: Yes
Permitted: Yes
Wet space: No
Addition: No
Conversion: No

12 Floor 2 - Primary Bedroom



Max Dimensions: 12'2" x 12'8"
Calculated Area: 151 sq. ft
Included: Yes

Heated: Yes
Finished: Yes
Enclosed: Yes
Contiguous: Yes
Permitted: Yes
Wet space: No
Addition: No
Conversion: No