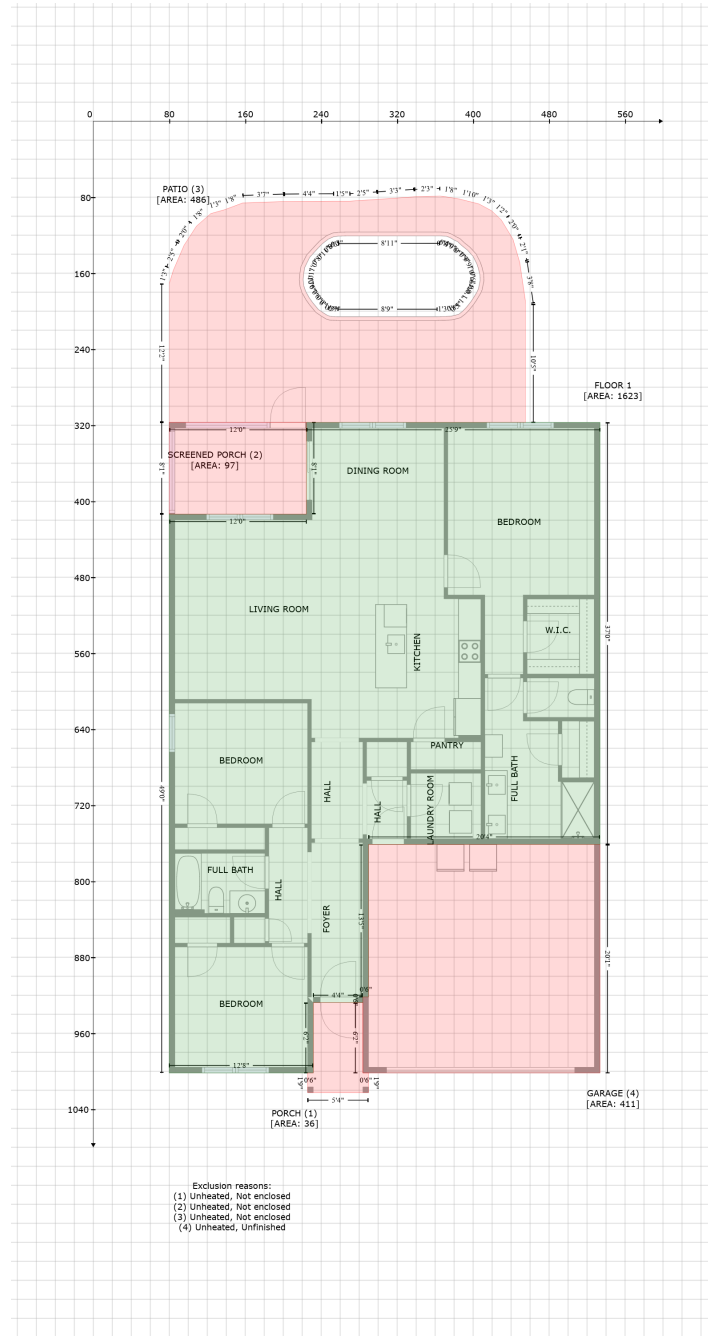


3169 Bells Lake Circle, Longs, Horry County, South Carolina, United States, 29582

Gross Living Area: 1623 sq. ft



Space	Area (sq. ft)	Calculation
FLOOR 1 (Living area)	1623	Coordinate Polygon Area Algorithm using inches $-\left((533.7 + 533.7) * (317 - 761.2) + (533.7 + 289.9) * (761.2 - 761.2) + (289.9 + 289.9) * (761.2 - 921.8) + (289.9 + 283.9) * (921.8 - 921.8) + (283.9 + 283.9) * (921.8 - 927.8) + (283.9 + 231.7) * (927.8 - 927.8) + (231.7 + 231.7) * (927.8 - 1001.8) + (231.7 + 79.9) * (1001.8 - 1001.8) + (79.9 + 79.9) * (1001.8 - 413.6) + (79.9 + 224.4) * (413.6 - 413.6) + (224.4 + 224.4) * (413.6 - 317) + (224.4 + 533.7) * (317 - 317)\right) * 0.5 + 0.00694$
PORCH	36	$-\left((283.9 + 283.9) * (927.8 - 1001.8) + (283.9 + 289.9) * (1001.8 - 1001.8) + (289.9 + 289.9) * \right)$

3169 Bells Lake Circle, Longs, Horry County, South Carolina, United States, 29582

Gross Living Area: 1623 sq. ft

Space	Area (sq. ft)	Calculation <small>Coordinate Polygon Area Algorithm using inches</small>
(Non-living area)		$(1001.8 - 1022.5) + (289.9 + 225.7) * (1022.5 - 1022.5) + (225.7 + 225.7) * (1022.5 - 1001.8) + (225.7 + 231.7) * (1001.8 - 1001.8) + (231.7 + 231.7) * (1001.8 - 927.8) + (231.7 + 283.9) * (927.8 - 927.8)) * 0.5 * 0.00694$
SCREENED PORCH (Non-living area)	97	$-((224.4 + 224.4) * (317 - 413.6) + (224.4 + 79.9) * (413.6 - 413.6) + (79.9 + 79.9) * (413.6 - 317) + (79.9 + 224.4) * (317 - 317)) * 0.5 * 0.00694$
PATIO (Non-living area)	486	$-((365.3 + 384.9) * (78.7 - 81.8) + (384.9 + 406) * (81.8 - 87.1) + (406 + 419.4) * (87.1 - 94.2) + (419.4 + 429.6) * (94.2 - 103.9) + (429.6 + 442) * (103.9 - 124.2) + (442 + 449.1) * (124.2 - 148.7) + (449.1 + 455.5) * (148.7 - 192.4) + (455.5 + 455.5) * (192.4 - 317) + (455.5 + 79.9) * (317 - 317) + (79.9 + 79.9) * (317 - 171.2) + (79.9 + 84.3) * (171.2 - 156.9) + (84.3 + 95.6) * (156.9 - 130.7) + (95.6 + 108.7) * (130.7 - 110.4) + (108.7 + 123.7) * (110.4 - 97.3) + (123.7 + 138.3) * (97.3 - 93.2) + (138.3 + 157.4) * (93.2 - 86.1) + (157.4 + 200.8) * (86.1 - 84.6) + (200.8 + 253.3) * (84.6 - 84.2) + (253.3 + 270.1) * (84.2 - 84.2) + (270.1 + 299.4) * (84.2 - 82.3) + (299.4 + 338.3) * (82.3 - 79.6) + (338.3 + 365.3) * (79.6 - 78.7)) * 0.5 * 0.00694 + -((365.2 + 258.1) * (120.7 - 121) + (258.1 + 253.3) * (121 - 121.6) + (253.3 + 247.6) * (121.6 - 124.1) + (247.6 + 241.1) * (124.1 - 129.1) + (241.1 + 233.5) * (129.1 - 137.1) + (233.5 + 228) * (137.1 - 143.2) + (228 + 222.6) * (143.2 - 154.3) + (222.6 + 221) * (154.3 - 166.8) + (221 + 221.7) * (166.8 - 173.3) + (221.7 + 223.7) * (173.3 - 179.2) + (223.7 + 227.4) * (179.2 - 185.7) + (227.4 + 231.1) * (185.7 - 191) + (231.1 + 237.1) * (191 - 198.3) + (237.1 + 246.7) * (198.3 - 204.5) + (246.7 + 249.8) * (204.5 - 205.5) + (249.8 + 257.1) * (205.5 - 205.8) + (257.1 + 362.2) * (205.8 - 205.8) + (362.2 + 377) * (205.8 - 205.2) + (377 + 384.9) * (205.2 - 203.2) + (384.9 + 389.1) * (203.2 - 199.9) + (389.1 + 397.4) * (199.9 - 190.4) + (397.4 + 403.9) * (190.4 - 180.1) + (403.9 + 405.7) * (180.1 - 176.3) + (405.7 + 407.4) * (176.3 - 167.6) + (407.4 + 407.2) * (167.6 - 161.5) + (407.2 + 403.9) * (161.5 - 150.1) + (403.9 + 400) * (150.1 - 142.2) + (400 + 393.9) * (142.2 - 135.6) + (393.9 + 388.1) * (135.6 - 131) + (388.1 + 383.8) * (131 - 126.9) + (383.8 + 375.5) * (126.9 - 122.5) + (375.5 + 371.9) * (122.5 - 121.1) + (371.9 + 365.2) * (121.1 - 120.7)) * 0.5 * 0.00694$
GARAGE (Non-living area)	411	$-((533.7 + 533.7) * (761.2 - 1001.8) + (533.7 + 283.9) * (1001.8 - 1001.8) + (283.9 + 283.9) * (1001.8 - 921.8) + (283.9 + 289.9) * (921.8 - 921.8) + (289.9 + 289.9) * (921.8 - 761.2) + (289.9 + 533.7) * (761.2 - 761.2)) * 0.5 * 0.00694$