

Home data report

4663 N 204th Ave,Buckeye,AZ,US




Total Area: 1589 sq. ft

1st Floor: 1589 sq. ft

Excluded: Garage 477 sq. ft, Porch 171 sq. ft, Covered patio 192 sq. ft, Patio 994 sq. ft, Walls: 178 sq. ft

Property summary

 1 Floors

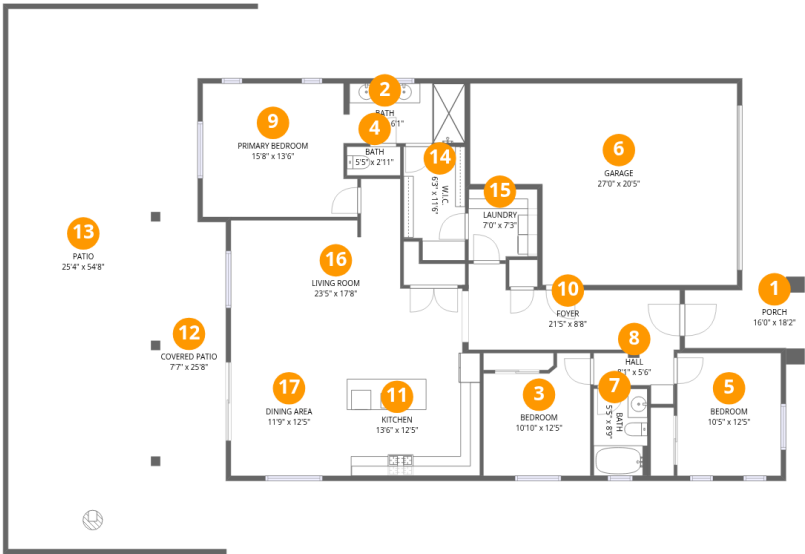
 3 Bedrooms

 2 Bathrooms

 1 Garages

Home data report

4663 N 204th Ave,Buckeye,AZ,US



Room dimensions

Floor 1 Total:1589sqft Excluded: 1834sqft

#		Dimensions	sqft	Counted as living area
1	Porch	16'0" x 18'2"	171 sq. ft	No
2	Bath	12'4" x 6'1"	73 sq. ft	Yes
3	Bedroom	10'10" x 12'5"	119 sq. ft	Yes
4	Bath	5'5" x 2'11"	16 sq. ft	Yes
5	Bedroom	10'5" x 12'5"	130 sq. ft	Yes
6	Garage	27'0" x 20'5"	477 sq. ft	No
7	Bath	5'5" x 8'9"	48 sq. ft	Yes
8	Hall	8'1" x 5'6"	32 sq. ft	Yes
9	Primary Bedroom	15'8" x 13'6"	198 sq. ft	Yes
10	Foyer	21'5" x 8'8"	139 sq. ft	Yes
11	Kitchen	13'6" x 12'5"	167 sq. ft	Yes

Home data report

4663 N 204th Ave,Buckeye,AZ,US

#		Dimensions	sqft	Counted as living area
12	Covered Patio	7'7" x 25'8"	192 sq. ft	No
13	Patio	25'4" x 54'8"	994 sq. ft	No
14	W.I.C.	6'3" x 11'6"	67 sq. ft	Yes
15	Laundry	7'0" x 7'3"	49 sq. ft	Yes
16	Living Room	23'5" x 17'8"	288 sq. ft	Yes
17	Dining Area	11'9" x 12'5"	146 sq. ft	Yes

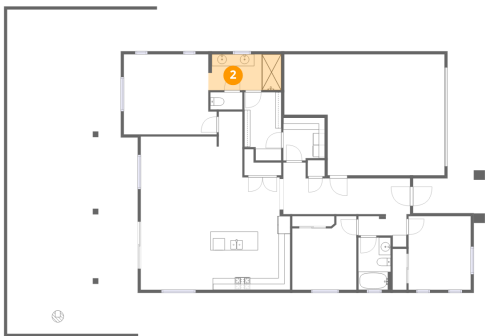
1 Floor 1 - Porch



Dimensions: 16'0" x 18'2"
Area: 171 sq. ft
Counted as living area: No

Heated: No
Finished: No
Enclosed: No
Contiguous: Yes
Permitted: Yes
Wet space: No
Addition: No
Conversion: No

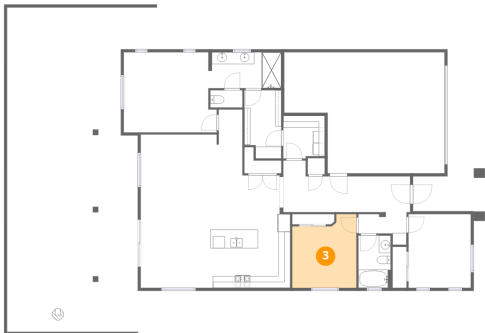
2 Floor 1 - Bath



Dimensions: 12'4" x 6'1"
Area: 73 sq. ft
Counted as living area: Yes

Heated: Yes
Finished: Yes
Enclosed: Yes
Contiguous: Yes
Permitted: Yes
Wet space: Yes
Addition: No
Conversion: No

3 Floor 1 - Bedroom



Dimensions: 10'10" x 12'5"
Area: 119 sq. ft
Counted as living area: Yes

Heated: Yes
Finished: Yes
Enclosed: Yes
Contiguous: Yes
Permitted: Yes
Wet space: No
Addition: No
Conversion: No

4 Floor 1 - Bath



Dimensions: 5'5" x 2'11"
Area: 16 sq. ft
Counted as living area: Yes

Heated: Yes
Finished: Yes
Enclosed: Yes
Contiguous: Yes
Permitted: Yes
Wet space: Yes
Addition: No
Conversion: No

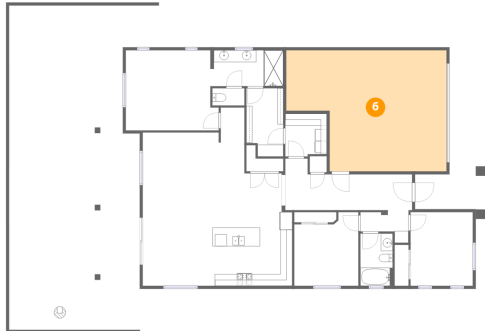
5 Floor 1 - Bedroom



Dimensions: 10'5" x 12'5"
Area: 130 sq. ft
Counted as living area: Yes

Heated: Yes
Finished: Yes
Enclosed: Yes
Contiguous: Yes
Permitted: Yes
Wet space: No
Addition: No
Conversion: No

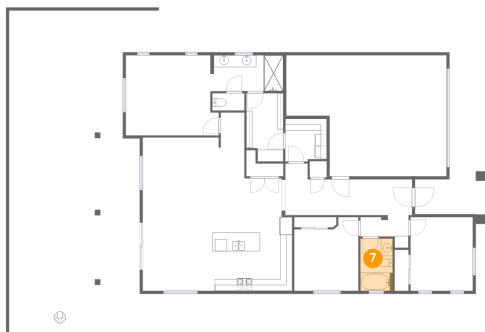
6 Floor 1 - Garage



Dimensions: 27'0" x 20'5"
Area: 477 sq. ft
Counted as living area: No

Heated: No
Finished: No
Enclosed: Yes
Contiguous: Yes
Permitted: Yes
Wet space: No
Addition: No
Conversion: No

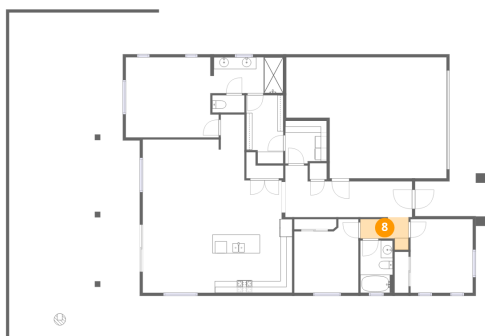
7 Floor 1 - Bath



Dimensions: 5'5" x 8'9"
Area: 48 sq. ft
Counted as living area: Yes

Heated: Yes
Finished: Yes
Enclosed: Yes
Contiguous: Yes
Permitted: Yes
Wet space: Yes
Addition: No
Conversion: No

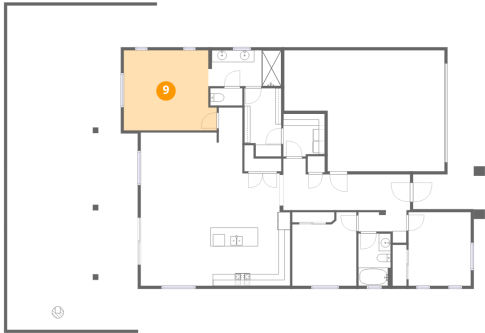
8 Floor 1 - Hall



Dimensions: 8'1" x 5'6"
Area: 32 sq. ft
Counted as living area: Yes

Heated: Yes
Finished: Yes
Enclosed: Yes
Contiguous: Yes
Permitted: Yes
Wet space: No
Addition: No
Conversion: No

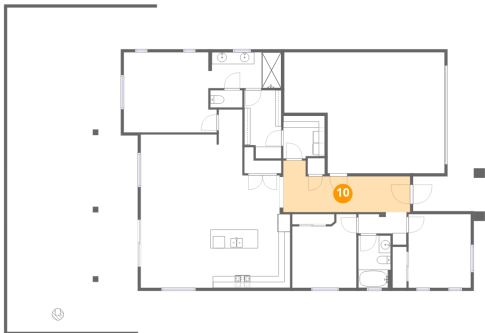
9 Floor 1 - Primary Bedroom



Dimensions: 15'8" x 13'6"
Area: 198 sq. ft
Counted as living area: Yes

Heated: Yes
Finished: Yes
Enclosed: Yes
Contiguous: Yes
Permitted: Yes
Wet space: No
Addition: No
Conversion: No

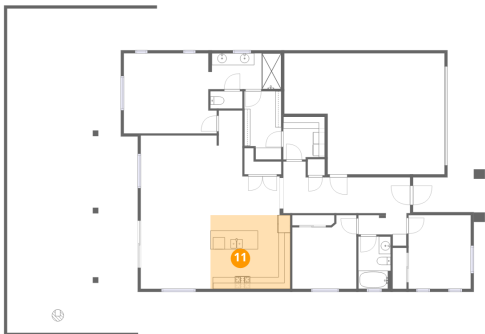
10 Floor 1 - Foyer



Dimensions: 21'5" x 8'8"
Area: 139 sq. ft
Counted as living area: Yes

Heated: Yes
Finished: Yes
Enclosed: Yes
Contiguous: Yes
Permitted: Yes
Wet space: No
Addition: No
Conversion: No

11 Floor 1 - Kitchen



Dimensions: 13'6" x 12'5"
Area: 167 sq. ft
Counted as living area: Yes

Heated: Yes
Finished: Yes
Enclosed: Yes
Contiguous: Yes
Permitted: Yes
Wet space: No
Addition: No
Conversion: No

12 Floor 1 - Covered Patio



Dimensions: 7'7" x 25'8"
Area: 192 sq. ft
Counted as living area: No

Heated: No
Finished: No
Enclosed: No
Contiguous: Yes
Permitted: Yes
Wet space: No
Addition: No
Conversion: No

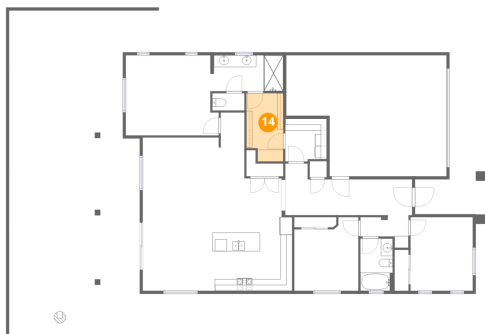
13 Floor 1 - Patio



Dimensions: 25'4" x 54'8"
Area: 994 sq. ft
Counted as living area: No

Heated: No
Finished: No
Enclosed: No
Contiguous: Yes
Permitted: Yes
Wet space: No
Addition: No
Conversion: No

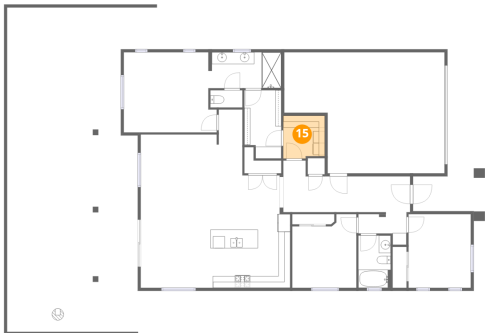
14 Floor 1 - W.I.C.



Dimensions: 6'3" x 11'6"
Area: 67 sq. ft
Counted as living area: Yes

Heated: Yes
Finished: Yes
Enclosed: Yes
Contiguous: Yes
Permitted: Yes
Wet space: No
Addition: No
Conversion: No

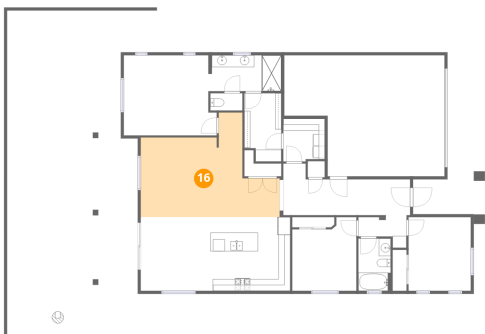
15 Floor 1 - Laundry



Dimensions: 7'0" x 7'3"
Area: 49 sq. ft
Counted as living area: Yes

Heated: Yes
Finished: Yes
Enclosed: Yes
Contiguous: Yes
Permitted: Yes
Wet space: No
Addition: No
Conversion: No

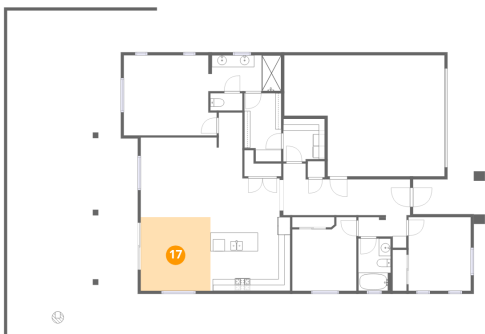
16 Floor 1 - Living Room



Dimensions: 23'5" x 17'8"
Area: 288 sq. ft
Counted as living area: Yes

Heated: Yes
Finished: Yes
Enclosed: Yes
Contiguous: Yes
Permitted: Yes
Wet space: No
Addition: No
Conversion: No

17 Floor 1 - Dining Area



Dimensions: 11'9" x 12'5"
Area: 146 sq. ft
Counted as living area: Yes

Heated: Yes
Finished: Yes
Enclosed: Yes
Contiguous: Yes
Permitted: Yes
Wet space: No
Addition: No
Conversion: No