

25043 Prairie Grove Drive, Normantown, Plainfield, Will County, Illinois, United States, 60585

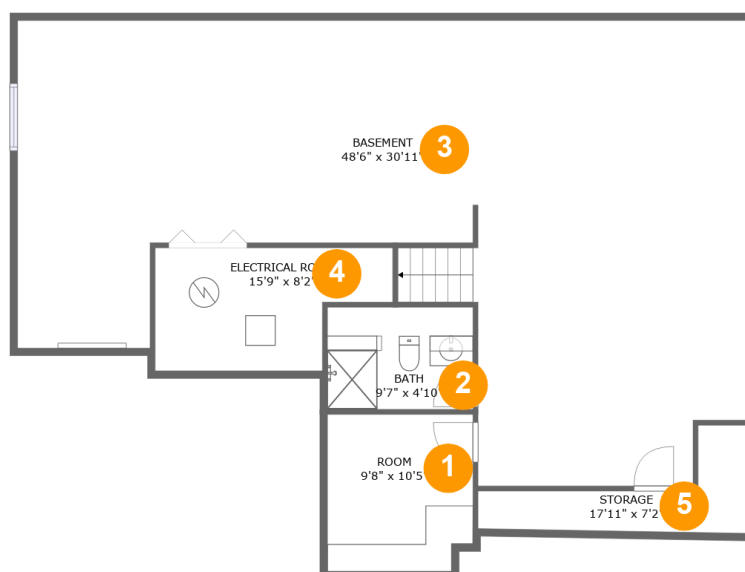


Property summary

1 Garages **5** Bedrooms **3** Bathrooms **1** Half baths

3 Floors **4,480** Gross living area sqft **5,483** Total sqft

25043 Prairie Grove Drive, Normantown, Plainfield, Will County, Illinois, United States, 60585



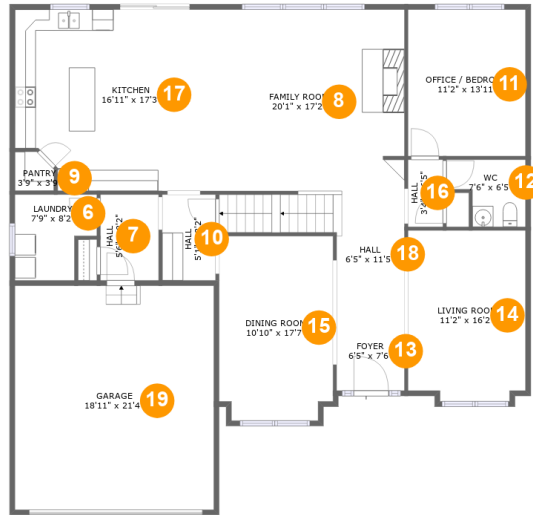
Room dimensions

Floor 1

Total sqft: 1522 Living area: 1333

#		Dimensions	sqft	Counted as living area
1	Room	9'8" x 10'5"	98 sq. ft	Yes
2	Bath	9'7" x 4'10"	66 sq. ft	Yes
3	Basement	48'6" x 30'11"	1070 sq. ft	Yes
4	Room	15'9" x 8'2"	108 sq. ft	No
5	Storage	17'11" x 7'2"	62 sq. ft	No

25043 Prairie Grove Drive, Normantown, Plainfield, Will County, Illinois, United States, 60585



Room dimensions

Floor 2

Total sqft: 2105 Living area: 1677

#		Dimensions	sqft	Counted as living area
6	Utility	7'9" x 8'2"	55 sq. ft	Yes
7	Hall	5'6" x 8'2"	45 sq. ft	Yes
8	Living Room	20'1" x 17'2"	345 sq. ft	Yes
9	Pantry	3'9" x 3'9"	13 sq. ft	Yes
10	Hall	5'1" x 8'2"	41 sq. ft	Yes
11	Office / Bedroom	11'2" x 13'11"	156 sq. ft	Yes
12	Bath	7'6" x 6'5"	39 sq. ft	Yes
13	Entry	6'5" x 7'6"	49 sq. ft	Yes
14	Living Room	11'2" x 16'2"	177 sq. ft	Yes
15	Dining Room	10'10" x 17'7"	185 sq. ft	Yes
16	Hall	3'4" x 6'5"	21 sq. ft	Yes

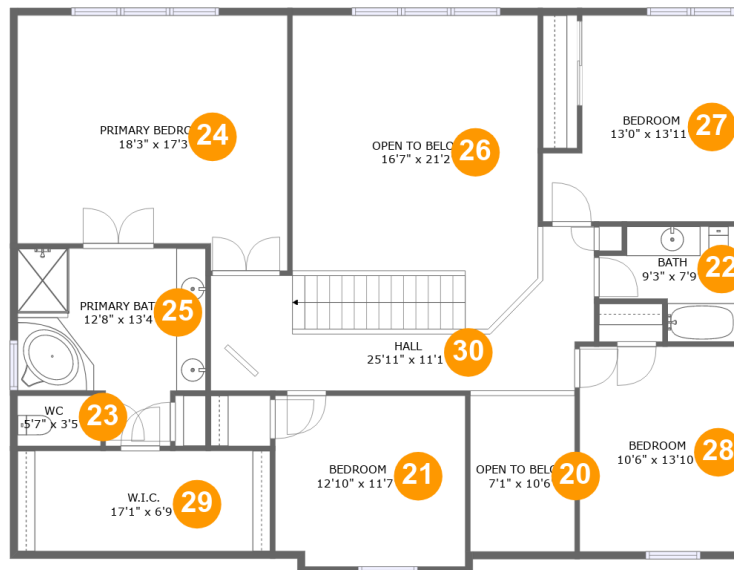
Scan captured on Fri, 27 Dec 2024 17:35:26 GMT

Information is calculated by Cubicasa technology deemed highly reliable but not guaranteed.

**25043 Prairie Grove Drive, Normantown, Plainfield,
Will County, Illinois, United States, 60585**

#		Dimensions	sqft	Counted as living area
17	Kitchen	16'11" x 17'3"	278 sq. ft	Yes
18	Hall	6'5" x 11'5"	115 sq. ft	Yes
19	Garage	18'11" x 21'4"	403 sq. ft	No

25043 Prairie Grove Drive, Normantown, Plainfield, Will County, Illinois, United States, 60585



Room dimensions

Floor 3

Total sqft: 1856 Living area: 1470

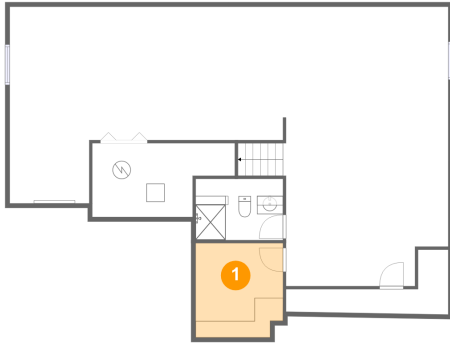
#		Dimensions	sqft	Counted as living area
20	Open To Below	7'1" x 10'6"	74 sq. ft	No
21	Bedroom	12'10" x 11'7"	146 sq. ft	Yes
22	Bath	9'3" x 7'9"	55 sq. ft	Yes
23	Bath	5'7" x 3'5"	19 sq. ft	Yes
24	Bedroom	18'3" x 17'3"	291 sq. ft	Yes
25	Bath	12'8" x 13'4"	139 sq. ft	Yes
26	Open To Below	16'7" x 21'2"	300 sq. ft	No
27	Bedroom	13'0" x 13'11"	157 sq. ft	Yes
28	Bedroom	10'6" x 13'10"	146 sq. ft	Yes
29	Cl	17'1" x 6'9"	116 sq. ft	Yes
30	Hall	25'11" x 11'1"	204 sq. ft	Yes

Scan captured on Fri, 27 Dec 2024 17:35:26 GMT

Information is calculated by Cubicasa technology deemed highly reliable but not guaranteed.

25043 Prairie Grove Drive, Normantown, Plainfield, Will County, Illinois, United States, 60585

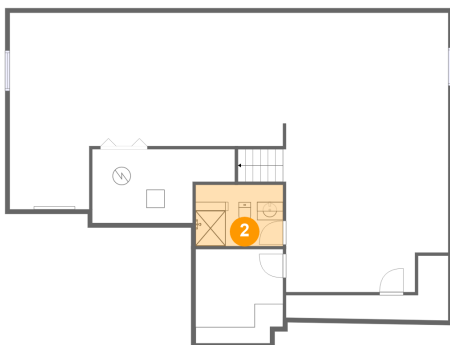
1 Floor 1 - Room



Dimensions: 9'8" x 10'5"
Area: 98 sq. ft
Counted as living area: Yes

Heated: Yes
Finished: Yes
Enclosed: Yes
Contiguous: Yes
Permitted: Yes
Wet space: No
Addition: No
Conversion: No

2 Floor 1 - Bath

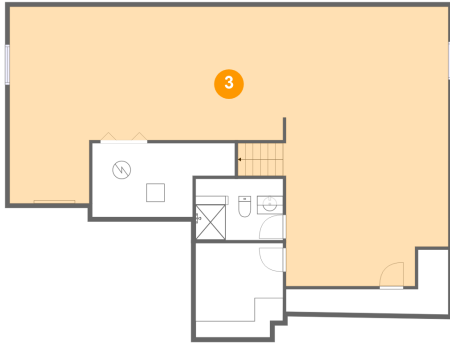


Dimensions: 9'7" x 4'10"
Area: 66 sq. ft
Counted as living area: Yes

Heated: Yes
Finished: Yes
Enclosed: Yes
Contiguous: Yes
Permitted: Yes
Wet space: Yes
Addition: No
Conversion: No

25043 Prairie Grove Drive, Normantown, Plainfield, Will County, Illinois, United States, 60585

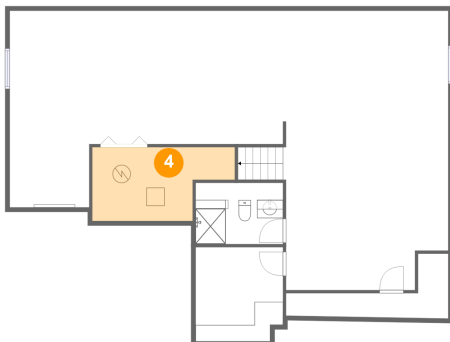
3 Floor 1 - Basement



Dimensions: 48'6" x 30'11"
Area: 1070 sq. ft
Counted as living area: Yes

Heated: Yes
Finished: Yes
Enclosed: Yes
Contiguous: Yes
Permitted: Yes
Wet space: No
Addition: No
Conversion: No

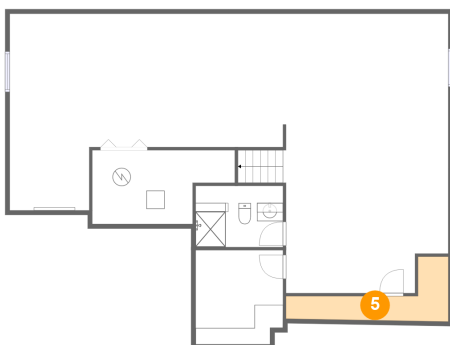
4 Floor 1 - Room



Dimensions: 15'9" x 8'2"
Area: 108 sq. ft
Counted as living area: No

Heated: No
Finished: No
Enclosed: Yes
Contiguous: Yes
Permitted: Yes
Wet space: No
Addition: No
Conversion: No

5 Floor 1 - Storage



Dimensions: 17'11" x 7'2"
Area: 62 sq. ft
Counted as living area: No

Heated: No
Finished: No
Enclosed: No
Contiguous: Yes
Permitted: Yes
Wet space: No
Addition: No
Conversion: No

25043 Prairie Grove Drive, Normantown, Plainfield, Will County, Illinois, United States, 60585

6 Floor 2 - Utility



Dimensions: 7'9" x 8'2"
Area: 55 sq. ft
Counted as living area: Yes

Heated: Yes
Finished: Yes
Enclosed: Yes
Contiguous: Yes
Permitted: Yes
Wet space: No
Addition: No
Conversion: No

7 Floor 2 - Hall



Dimensions: 5'6" x 8'2"
Area: 45 sq. ft
Counted as living area: Yes

Heated: Yes
Finished: Yes
Enclosed: Yes
Contiguous: Yes
Permitted: Yes
Wet space: No
Addition: No
Conversion: No

8 Floor 2 - Living Room

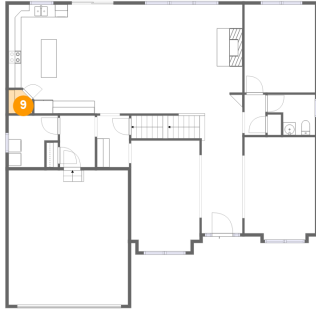


Dimensions: 20'1" x 17'2"
Area: 345 sq. ft
Counted as living area: Yes

Heated: Yes
Finished: Yes
Enclosed: Yes
Contiguous: Yes
Permitted: Yes
Wet space: No
Addition: No
Conversion: No

25043 Prairie Grove Drive, Normantown, Plainfield, Will County, Illinois, United States, 60585

9 Floor 2 - Pantry



Dimensions: 3'9" x 3'9"
Area: 13 sq. ft
Counted as living area: Yes

Heated: Yes
Finished: Yes
Enclosed: Yes
Contiguous: Yes
Permitted: Yes
Wet space: No
Addition: No
Conversion: No

10 Floor 2 - Hall



Dimensions: 5'1" x 8'2"
Area: 41 sq. ft
Counted as living area: Yes

Heated: Yes
Finished: Yes
Enclosed: Yes
Contiguous: Yes
Permitted: Yes
Wet space: No
Addition: No
Conversion: No

11 Floor 2 - Office / Bedroom

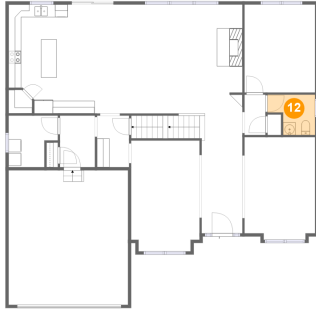


Dimensions: 11'2" x 13'11"
Area: 156 sq. ft
Counted as living area: Yes

Heated: Yes
Finished: Yes
Enclosed: Yes
Contiguous: Yes
Permitted: Yes
Wet space: No
Addition: No
Conversion: No

**25043 Prairie Grove Drive, Normantown, Plainfield,
Will County, Illinois, United States, 60585**

12 Floor 2 - Bath



Dimensions: 7'6" x 6'5"
Area: 39 sq. ft
Counted as living area: Yes

Heated: Yes
Finished: Yes
Enclosed: Yes
Contiguous: Yes
Permitted: Yes
Wet space: Yes
Addition: No
Conversion: No

13 Floor 2 - Entry



Dimensions: 6'5" x 7'6"
Area: 49 sq. ft
Counted as living area: Yes

Heated: Yes
Finished: Yes
Enclosed: Yes
Contiguous: Yes
Permitted: Yes
Wet space: No
Addition: No
Conversion: No

14 Floor 2 - Living Room

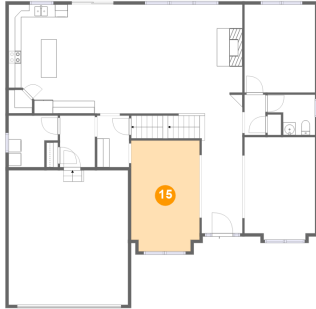


Dimensions: 11'2" x 16'2"
Area: 177 sq. ft
Counted as living area: Yes

Heated: Yes
Finished: Yes
Enclosed: Yes
Contiguous: Yes
Permitted: Yes
Wet space: No
Addition: No
Conversion: No

25043 Prairie Grove Drive, Normantown, Plainfield, Will County, Illinois, United States, 60585

15 Floor 2 - Dining Room



Dimensions: 10'10" x 17'7"
Area: 185 sq. ft
Counted as living area: Yes

Heated: Yes
Finished: Yes
Enclosed: Yes
Contiguous: Yes
Permitted: Yes
Wet space: No
Addition: No
Conversion: No

16 Floor 2 - Hall



Dimensions: 3'4" x 6'5"
Area: 21 sq. ft
Counted as living area: Yes

Heated: Yes
Finished: Yes
Enclosed: Yes
Contiguous: Yes
Permitted: Yes
Wet space: No
Addition: No
Conversion: No

17 Floor 2 - Kitchen

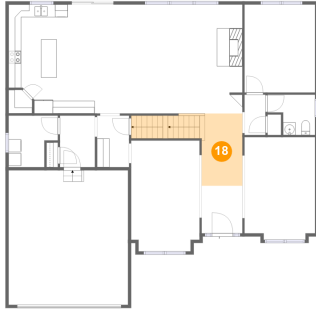


Dimensions: 16'11" x 17'3"
Area: 278 sq. ft
Counted as living area: Yes

Heated: Yes
Finished: Yes
Enclosed: Yes
Contiguous: Yes
Permitted: Yes
Wet space: No
Addition: No
Conversion: No

**25043 Prairie Grove Drive, Normantown, Plainfield,
Will County, Illinois, United States, 60585**

18 Floor 2 - Hall



Dimensions: 6'5" x 11'5"
Area: 115 sq. ft
Counted as living area: Yes

Heated: Yes
Finished: Yes
Enclosed: Yes
Contiguous: Yes
Permitted: Yes
Wet space: No
Addition: No
Conversion: No

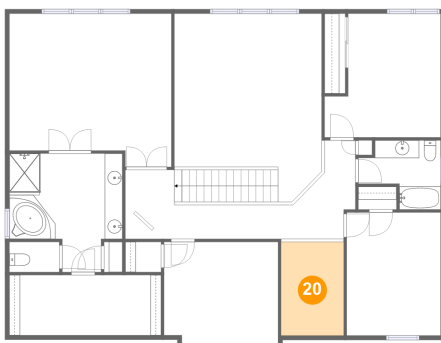
19 Floor 2 - Garage



Dimensions: 18'11" x 21'4"
Area: 403 sq. ft
Counted as living area: No

Heated: No
Finished: No
Enclosed: Yes
Contiguous: Yes
Permitted: Yes
Wet space: No
Addition: No
Conversion: No

20 Floor 3 - Open To Below

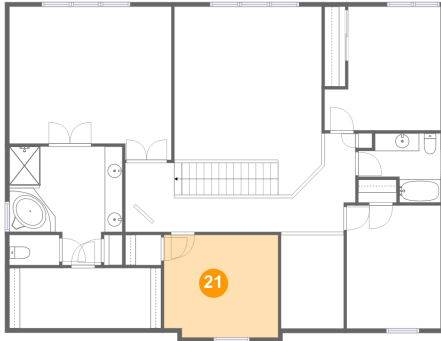


Dimensions: 7'1" x 10'6"
Area: 74 sq. ft
Counted as living area: No

Heated: No
Finished: No
Enclosed: No
Contiguous: Yes
Permitted: No
Wet space: No
Addition: No
Conversion: No

**25043 Prairie Grove Drive, Normantown, Plainfield,
Will County, Illinois, United States, 60585**

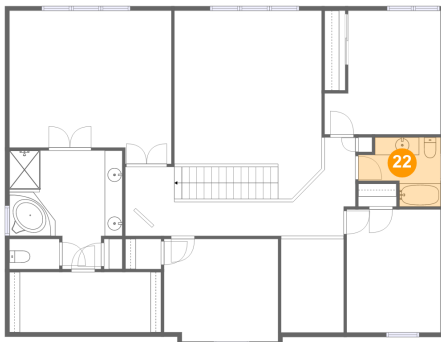
21 Floor 3 - Bedroom



Dimensions: 12'10" x 11'7"
Area: 146 sq. ft
Counted as living area: Yes

Heated: Yes
Finished: Yes
Enclosed: Yes
Contiguous: Yes
Permitted: Yes
Wet space: No
Addition: No
Conversion: No

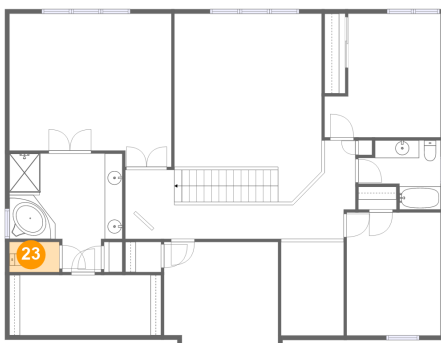
22 Floor 3 - Bath



Dimensions: 9'3" x 7'9"
Area: 55 sq. ft
Counted as living area: Yes

Heated: Yes
Finished: Yes
Enclosed: Yes
Contiguous: Yes
Permitted: Yes
Wet space: Yes
Addition: No
Conversion: No

23 Floor 3 - Bath

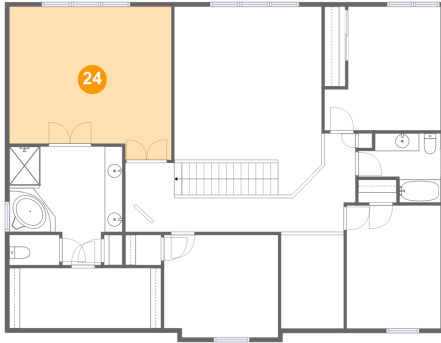


Dimensions: 5'7" x 3'5"
Area: 19 sq. ft
Counted as living area: Yes

Heated: Yes
Finished: Yes
Enclosed: Yes
Contiguous: Yes
Permitted: Yes
Wet space: Yes
Addition: No
Conversion: No

**25043 Prairie Grove Drive, Normantown, Plainfield,
Will County, Illinois, United States, 60585**

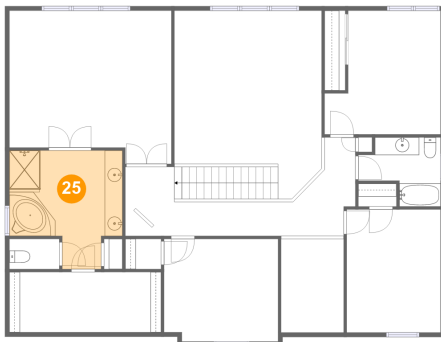
24 Floor 3 - Bedroom



Dimensions: 18'3" x 17'3"
Area: 291 sq. ft
Counted as living area: Yes

Heated: Yes
Finished: Yes
Enclosed: Yes
Contiguous: Yes
Permitted: Yes
Wet space: No
Addition: No
Conversion: No

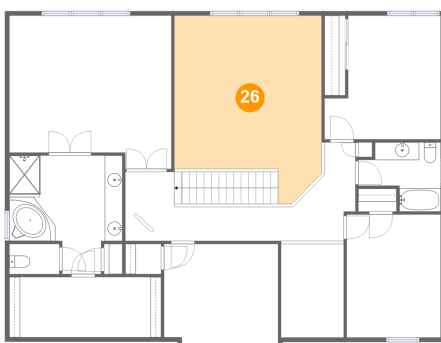
25 Floor 3 - Bath



Dimensions: 12'8" x 13'4"
Area: 139 sq. ft
Counted as living area: Yes

Heated: Yes
Finished: Yes
Enclosed: Yes
Contiguous: Yes
Permitted: Yes
Wet space: Yes
Addition: No
Conversion: No

26 Floor 3 - Open To Below

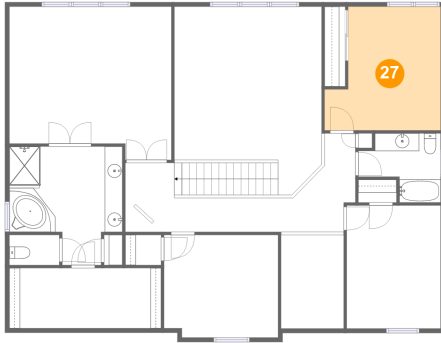


Dimensions: 16'7" x 21'2"
Area: 300 sq. ft
Counted as living area: No

Heated: No
Finished: No
Enclosed: No
Contiguous: Yes
Permitted: No
Wet space: No
Addition: No
Conversion: No

**25043 Prairie Grove Drive, Normantown, Plainfield,
Will County, Illinois, United States, 60585**

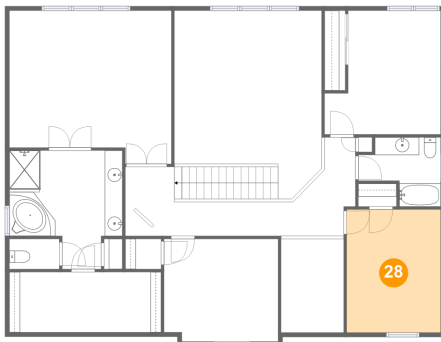
27 Floor 3 - Bedroom



Dimensions: 13'0" x 13'11"
Area: 157 sq. ft
Counted as living area: Yes

Heated: Yes
Finished: Yes
Enclosed: Yes
Contiguous: Yes
Permitted: Yes
Wet space: No
Addition: No
Conversion: No

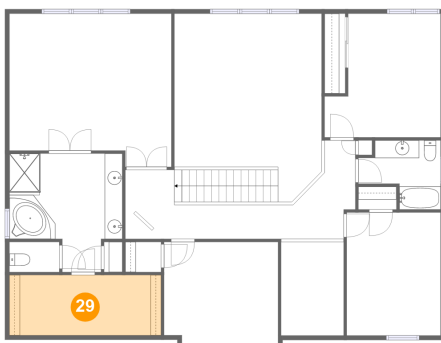
28 Floor 3 - Bedroom



Dimensions: 10'6" x 13'10"
Area: 146 sq. ft
Counted as living area: Yes

Heated: Yes
Finished: Yes
Enclosed: Yes
Contiguous: Yes
Permitted: Yes
Wet space: No
Addition: No
Conversion: No

29 Floor 3 - Cl

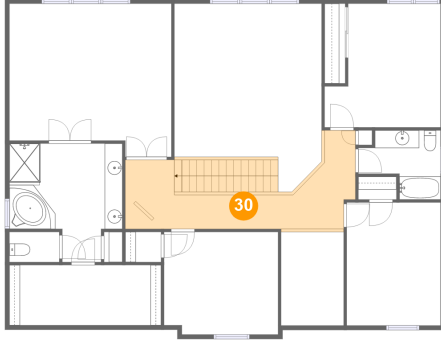


Dimensions: 17'1" x 6'9"
Area: 116 sq. ft
Counted as living area: Yes

Heated: Yes
Finished: Yes
Enclosed: Yes
Contiguous: Yes
Permitted: Yes
Wet space: No
Addition: No
Conversion: No

**25043 Prairie Grove Drive, Normantown, Plainfield,
Will County, Illinois, United States, 60585**

30 Floor 3 - Hall



Dimensions: 25'11" x 11'1"
Area: 204 sq. ft
Counted as living area: Yes

Heated: Yes
Finished: Yes
Enclosed: Yes
Contiguous: Yes
Permitted: Yes
Wet space: No
Addition: No
Conversion: No