

1771 North Elk Road, Pocatello, Bannock County, Idaho, United States, 83204



Property Summary



2 floors



4 bedrooms



1 bathrooms



3,404 total sqft

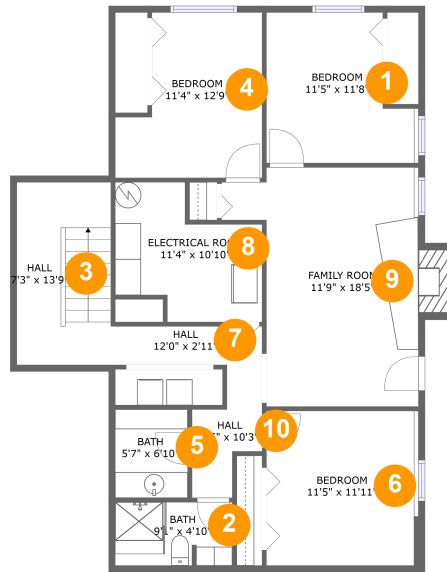


1 garages



2,270 Gross Living Area sqft

1771 North Elk Road, Pocatello, Bannock County, Idaho, United States, 83204



Room Dimensions

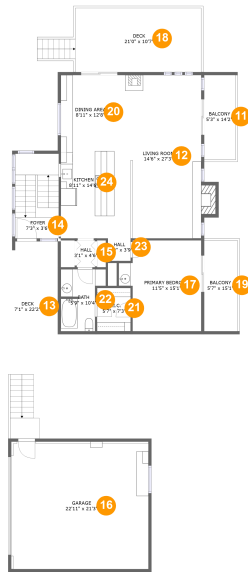
Floor 1

Total sqft: 1197

Living area: 1088

#	Room name	Dimensions	Area (sqft)	Counted as Living Area
1	Bedroom	11'5" x 11'8"	116 sq. ft	Yes
2	Bath	9'1" x 4'10"	44 sq. ft	Yes
3	Hall	7'3" x 13'9"	103 sq. ft	Yes
4	Bedroom	11'4" x 12'9"	122 sq. ft	Yes
5	Bath	5'7" x 6'10"	38 sq. ft	Yes
6	Bedroom	11'5" x 11'11"	139 sq. ft	Yes
7	Hall	12'0" x 2'11"	35 sq. ft	Yes
8	Electrical Room	11'4" x 10'10"	95 sq. ft	No
9	Family Room	11'9" x 18'5"	239 sq. ft	Yes
10	Hall	5'5" x 10'3"	39 sq. ft	Yes

1771 North Elk Road, Pocatello, Bannock County, Idaho, United States, 83204



Room Dimensions

Floor 2

Total sqft: 2207

Living area: 1182

#	Room name	Dimensions	Area (sqft)	Counted as Living Area
11	Balcony	5'3" x 14'2"	74 sq. ft	No
12	Living Room	14'6" x 27'3"	407 sq. ft	Yes
13	Deck	7'1" x 22'2"	97 sq. ft	No
14	Foyer	7'3" x 3'6"	104 sq. ft	Yes
15	Hall	3'1" x 4'6"	14 sq. ft	Yes
16	Garage	22'11" x 21'3"	486 sq. ft	No
17	Primary Bedroom	11'5" x 15'1"	182 sq. ft	Yes
18	Deck	21'0" x 10'7"	224 sq. ft	No
19	Balcony	5'7" x 15'1"	84 sq. ft	No
20	Dining Area	8'11" x 12'8"	113 sq. ft	Yes
21	W.i.c.	5'7" x 7'3"	40 sq. ft	Yes

Scan captured on Fri, 10 May 2024 21:32:22 GMT

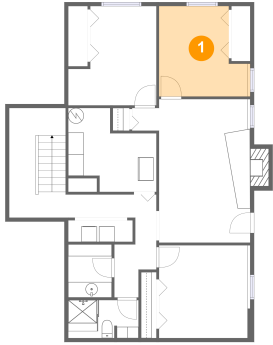
Information is calculated by CubiCasa technology; deemed highly reliable but not guaranteed.

**1771 North Elk Road, Pocatello, Bannock County,
Idaho, United States, 83204**

#	Room name	Dimensions	Area (sqft)	Counted as Living Area
22	Bath	5'9" x 10'4"	63 sq. ft	Yes
23	Hall	3'10" x 3'9"	14 sq. ft	Yes
24	Kitchen	8'11" x 14'6"	129 sq. ft	Yes

1771 North Elk Road, Pocatello, Bannock County, Idaho, United States, 83204

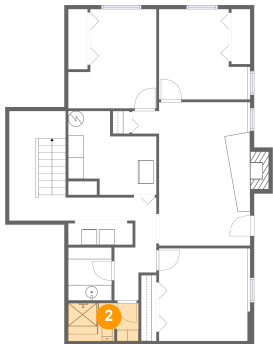
1 Floor 1 - Bedroom



Dimensions: 11'5" x 11'8"
Area: 116 sq. ft
Counted as Living Area:
Yes

Heated: Yes
Finished: Yes
Enclosed: Yes
Contiguous:
Yes
Permitted: Yes
Wet Space: No
Addition: No
Conversion: No

2 Floor 1 - Bath

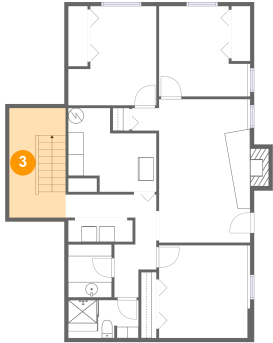


Dimensions: 9'1" x 4'10"
Area: 44 sq. ft
Counted as Living Area:
Yes

Heated: Yes
Finished: Yes
Enclosed: Yes
Contiguous:
Yes
Permitted: Yes
Wet Space: Yes
Addition: No
Conversion: No

1771 North Elk Road, Pocatello, Bannock County, Idaho, United States, 83204

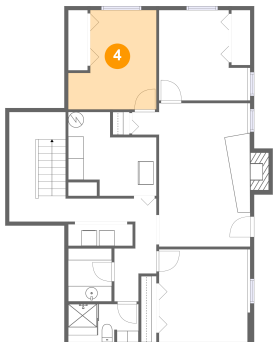
3 Floor 1 - Hall



Dimensions: 7'3" x 13'9"
Area: 103 sq. ft
Counted as Living Area:
Yes

Heated: Yes
Finished: Yes
Enclosed: Yes
Contiguous:
Yes
Permitted: Yes
Wet Space: No
Addition: No
Conversion: No

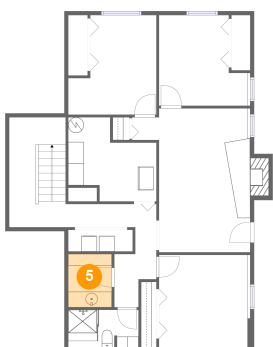
4 Floor 1 - Bedroom



Dimensions: 11'4" x 12'9"
Area: 122 sq. ft
Counted as Living Area:
Yes

Heated: Yes
Finished: Yes
Enclosed: Yes
Contiguous:
Yes
Permitted: Yes
Wet Space: No
Addition: No
Conversion: No

5 Floor 1 - Bath

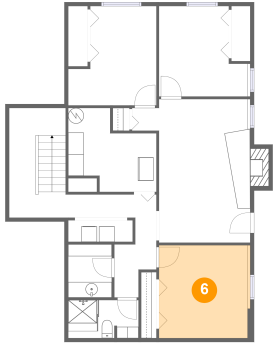


Dimensions: 5'7" x 6'10"
Area: 38 sq. ft
Counted as Living Area:
Yes

Heated: Yes
Finished: Yes
Enclosed: Yes
Contiguous:
Yes
Permitted: Yes
Wet Space: Yes
Addition: No
Conversion: No

1771 North Elk Road, Pocatello, Bannock County, Idaho, United States, 83204

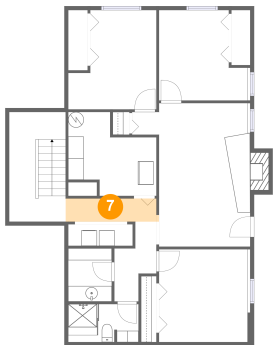
6 Floor 1 - Bedroom



Dimensions: 11'5" x 11'11"
Area: 139 sq. ft
Counted as Living Area:
Yes

Heated: Yes
Finished: Yes
Enclosed: Yes
Contiguous:
Yes
Permitted: Yes
Wet Space: No
Addition: No
Conversion: No

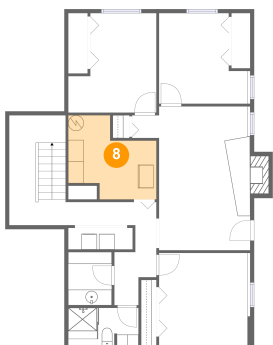
7 Floor 1 - Hall



Dimensions: 12'0" x 2'11"
Area: 35 sq. ft
Counted as Living Area:
Yes

Heated: Yes
Finished: Yes
Enclosed: Yes
Contiguous:
Yes
Permitted: Yes
Wet Space: No
Addition: No
Conversion: No

8 Floor 1 - Electrical Room

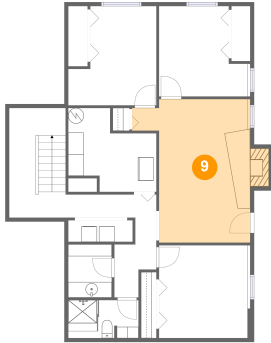


Dimensions: 11'4" x 10'10"
Area: 95 sq. ft
Counted as Living Area: No

Heated: No
Finished: No
Enclosed: Yes
Contiguous: Yes
Permitted: Yes
Wet Space: No
Addition: No
Conversion: No

1771 North Elk Road, Pocatello, Bannock County, Idaho, United States, 83204

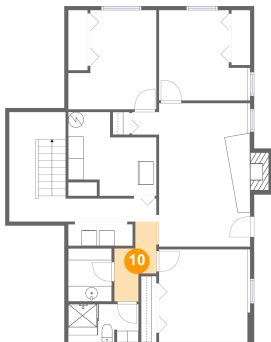
9 Floor 1 - Family Room



Dimensions: 11'9" x 18'5"
Area: 239 sq. ft
Counted as Living Area:
Yes

Heated: Yes
Finished: Yes
Enclosed: Yes
Contiguous:
Yes
Permitted: Yes
Wet Space: No
Addition: No
Conversion: No

10 Floor 1 - Hall



Dimensions: 5'5" x 10'3"
Area: 39 sq. ft
Counted as Living Area:
Yes

Heated: Yes
Finished: Yes
Enclosed: Yes
Contiguous:
Yes
Permitted: Yes
Wet Space: No
Addition: No
Conversion: No

11 Floor 2 - Balcony



Dimensions: 5'3" x 14'2"
Area: 74 sq. ft
Counted as Living Area: No

Heated: No
Finished: Yes
Enclosed: No
Contiguous: Yes
Permitted: Yes
Wet Space: No
Addition: No
Conversion: No

1771 North Elk Road, Pocatello, Bannock County, Idaho, United States, 83204

12 Floor 2 - Living Room



Dimensions: 14'6" x 27'3"
Area: 407 sq. ft
Counted as Living Area:
Yes

Heated: Yes
Finished: Yes
Enclosed: Yes
Contiguous:
Yes
Permitted: Yes
Wet Space: No
Addition: No
Conversion: No

13 Floor 2 - Deck



Dimensions: 7'1" x 22'2"
Area: 97 sq. ft
Counted as Living Area: No

Heated: No
Finished: Yes
Enclosed: No
Contiguous: Yes
Permitted: Yes
Wet Space: No
Addition: No
Conversion: No

14 Floor 2 - Foyer



Dimensions: 7'3" x 3'6"
Area: 104 sq. ft
Counted as Living Area:
Yes

Heated: Yes
Finished: Yes
Enclosed: Yes
Contiguous:
Yes
Permitted: Yes
Wet Space: No
Addition: No
Conversion: No

1771 North Elk Road, Pocatello, Bannock County, Idaho, United States, 83204

15 Floor 2 - Hall



Dimensions: 3'1" x 4'6"
Area: 14 sq. ft
Counted as Living Area: Yes

Heated: Yes
Finished: Yes
Enclosed: Yes
Contiguous: Yes
Permitted: Yes
Wet Space: No
Addition: No
Conversion: No

16 Floor 2 - Garage



Dimensions: 22'11" x 21'3"
Area: 486 sq. ft
Counted as Living Area: No

Heated: No
Finished: No
Enclosed: Yes
Contiguous: Yes
Permitted: Yes
Wet Space: No
Addition: No
Conversion: No

17 Floor 2 - Primary Bedroom



Dimensions: 11'5" x 15'1"
Area: 182 sq. ft
Counted as Living Area: Yes

Heated: Yes
Finished: Yes
Enclosed: Yes
Contiguous: Yes
Permitted: Yes
Wet Space: No
Addition: No
Conversion: No

1771 North Elk Road, Pocatello, Bannock County, Idaho, United States, 83204

18 Floor 2 - Deck



Dimensions: 21'0" x 10'7"
Area: 224 sq. ft
Counted as Living Area: No

Heated: No
Finished: Yes
Enclosed: No
Contiguous: Yes
Permitted: Yes
Wet Space: No
Addition: No
Conversion: No

19 Floor 2 - Balcony



Dimensions: 5'7" x 15'1"
Area: 84 sq. ft
Counted as Living Area: No

Heated: No
Finished: Yes
Enclosed: No
Contiguous: Yes
Permitted: Yes
Wet Space: No
Addition: No
Conversion: No

20 Floor 2 - Dining Area



Dimensions: 8'11" x 12'8"
Area: 113 sq. ft
Counted as Living Area: Yes

Heated: Yes
Finished: Yes
Enclosed: Yes
Contiguous: Yes
Permitted: Yes
Wet Space: No
Addition: No
Conversion: No

1771 North Elk Road, Pocatello, Bannock County, Idaho, United States, 83204

21 Floor 2 - W.i.c.



Dimensions: 5'7" x 7'3"
Area: 40 sq. ft
Counted as Living Area:
Yes

Heated: Yes
Finished: Yes
Enclosed: Yes
Contiguous:
Yes
Permitted: Yes
Wet Space: No
Addition: No
Conversion: No

22 Floor 2 - Bath



Dimensions: 5'9" x 10'4"
Area: 63 sq. ft
Counted as Living Area:
Yes

Heated: Yes
Finished: Yes
Enclosed: Yes
Contiguous:
Yes
Permitted: Yes
Wet Space: Yes
Addition: No
Conversion: No

23 Floor 2 - Hall



Dimensions: 3'10" x 3'9"
Area: 14 sq. ft
Counted as Living Area:
Yes

Heated: Yes
Finished: Yes
Enclosed: Yes
Contiguous:
Yes
Permitted: Yes
Wet Space: No
Addition: No
Conversion: No

1771 North Elk Road, Pocatello, Bannock County, Idaho, United States, 83204

24 Floor 2 - Kitchen



Dimensions: 8'11" x 14'6"

Area: 129 sq. ft

Counted as Living Area:
Yes

Heated: Yes

Finished: Yes

Enclosed: Yes

Contiguous:
Yes

Permitted: Yes

Wet Space: No

Addition: No

Conversion: No