

# 2532 Cobblestone Lane, Twin Falls, Twin Falls County, Idaho, United States, 83301



## Property Summary



2 floors



3 bedrooms



2 bathrooms



3,424 total sqft

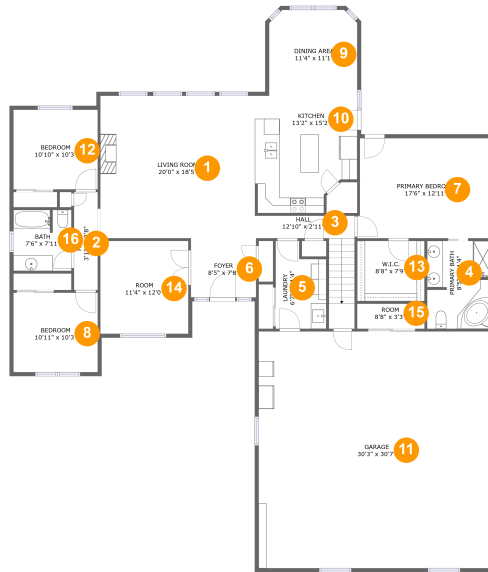


1 garages



2,387 Gross Living Area sqft

# 2532 Cobblestone Lane, Twin Falls, Twin Falls County, Idaho, United States, 83301



## Room Dimensions

Floor 1

Total sqft: 2978

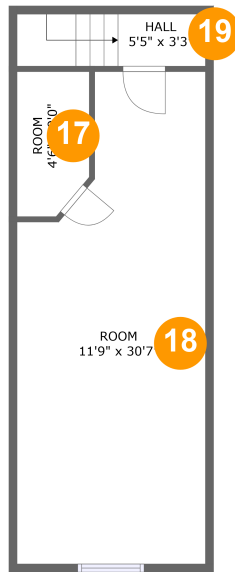
Living area: 1977

#	Room name	Dimensions	Area (sqft)	Counted as Living Area
1	Living Room	20'0" x 18'5"	368 sq. ft	Yes
2	Hall	3'1" x 12'8"	39 sq. ft	Yes
3	Hall	12'10" x 2'11"	76 sq. ft	Yes
4	Primary Bath	8'5" x 11'4"	94 sq. ft	Yes
5	Laundry	6'7" x 11'4"	66 sq. ft	Yes
6	Foyer	8'5" x 7'8"	64 sq. ft	Yes
7	Primary Bedroom	17'6" x 12'11"	223 sq. ft	Yes
8	Bedroom	10'11" x 10'3"	112 sq. ft	Yes
9	Dining Area	11'4" x 11'1"	123 sq. ft	Yes
10	Kitchen	13'2" x 15'2"	183 sq. ft	Yes
11	Garage	30'3" x 30'7"	924 sq. ft	No

**2532 Cobblestone Lane, Twin Falls, Twin Falls  
County, Idaho, United States, 83301**

#	Room name	Dimensions	Area (sqft)	Counted as Living Area
12	Bedroom	10'10" x 10'3"	112 sq. ft	Yes
13	W.i.c.	8'8" x 7'9"	68 sq. ft	Yes
14	Room	11'4" x 12'0"	136 sq. ft	Yes
15	Room	8'8" x 3'3"	28 sq. ft	No
16	Bath	7'6" x 7'11"	58 sq. ft	Yes

# 2532 Cobblestone Lane, Twin Falls, Twin Falls County, Idaho, United States, 83301



## Room Dimensions

**Floor 2****Total sqft: 446****Living area: 410**

#	Room name	Dimensions	Area (sqft)	Counted as Living Area
17	Room	4'6" x 9'0"	33 sq. ft	No
18	Room	11'9" x 30'7"	292 sq. ft	Yes
19	Hall	5'5" x 3'3"	37 sq. ft	Yes

# 2532 Cobblestone Lane, Twin Falls, Twin Falls County, Idaho, United States, 83301

## 1 Floor 1 - Living Room



**Dimensions:** 20'0" x 18'5"  
**Area:** 368 sq. ft  
**Counted as Living Area:**  
Yes

**Heated:** Yes  
**Finished:** Yes  
**Enclosed:** Yes  
**Contiguous:**  
Yes  
**Permitted:** Yes  
**Wet Space:** No  
**Addition:** No  
**Conversion:** No

## 2 Floor 1 - Hall



**Dimensions:** 3'1" x 12'8"  
**Area:** 39 sq. ft  
**Counted as Living Area:**  
Yes

**Heated:** Yes  
**Finished:** Yes  
**Enclosed:** Yes  
**Contiguous:**  
Yes  
**Permitted:** Yes  
**Wet Space:** No  
**Addition:** No  
**Conversion:** No

# 2532 Cobblestone Lane, Twin Falls, Twin Falls County, Idaho, United States, 83301

## 3 Floor 1 - Hall



Dimensions: 12'10" x 2'11"  
Area: 76 sq. ft  
Counted as Living Area:  
Yes

Heated: Yes  
Finished: Yes  
Enclosed: Yes  
Contiguous:  
Yes  
Permitted: Yes  
Wet Space: No  
Addition: No  
Conversion: No

## 4 Floor 1 - Primary Bath



Dimensions: 8'5" x 11'4"  
Area: 94 sq. ft  
Counted as Living Area:  
Yes

Heated: Yes  
Finished: Yes  
Enclosed: Yes  
Contiguous:  
Yes  
Permitted: Yes  
Wet Space: Yes  
Addition: No  
Conversion: No

## 5 Floor 1 - Laundry



Dimensions: 6'7" x 11'4"  
Area: 66 sq. ft  
Counted as Living Area:  
Yes

Heated: Yes  
Finished: Yes  
Enclosed: Yes  
Contiguous:  
Yes  
Permitted: Yes  
Wet Space: No  
Addition: No  
Conversion: No

# 2532 Cobblestone Lane, Twin Falls, Twin Falls County, Idaho, United States, 83301

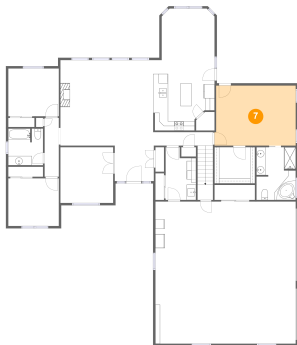
## 6 Floor 1 - Foyer



Dimensions: 8'5" x 7'8"  
Area: 64 sq. ft  
Counted as Living Area:  
Yes

Heated: Yes  
Finished: Yes  
Enclosed: Yes  
Contiguous:  
Yes  
Permitted: Yes  
Wet Space: No  
Addition: No  
Conversion: No

## 7 Floor 1 - Primary Bedroom



Dimensions: 17'6" x 12'11"  
Area: 223 sq. ft  
Counted as Living Area:  
Yes

Heated: Yes  
Finished: Yes  
Enclosed: Yes  
Contiguous:  
Yes  
Permitted: Yes  
Wet Space: No  
Addition: No  
Conversion: No

## 8 Floor 1 - Bedroom



Dimensions: 10'11" x 10'3"  
Area: 112 sq. ft  
Counted as Living Area:  
Yes

Heated: Yes  
Finished: Yes  
Enclosed: Yes  
Contiguous:  
Yes  
Permitted: Yes  
Wet Space: No  
Addition: No  
Conversion: No

# 2532 Cobblestone Lane, Twin Falls, Twin Falls County, Idaho, United States, 83301

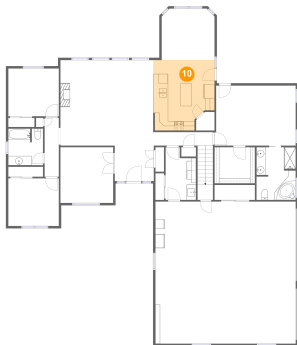
## 9 Floor 1 - Dining Area



Dimensions: 11'4" x 11'1"  
Area: 123 sq. ft  
Counted as Living Area: Yes

Heated: Yes  
Finished: Yes  
Enclosed: Yes  
Contiguous: Yes  
Permitted: Yes  
Wet Space: No  
Addition: No  
Conversion: No

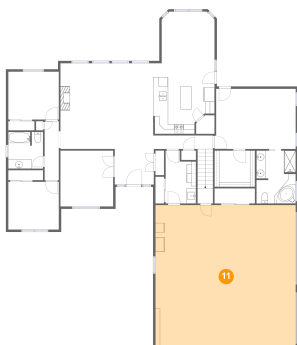
## 10 Floor 1 - Kitchen



Dimensions: 13'2" x 15'2"  
Area: 183 sq. ft  
Counted as Living Area: Yes

Heated: Yes  
Finished: Yes  
Enclosed: Yes  
Contiguous: Yes  
Permitted: Yes  
Wet Space: No  
Addition: No  
Conversion: No

## 11 Floor 1 - Garage



Dimensions: 30'3" x 30'7"  
Area: 924 sq. ft  
Counted as Living Area: No

Heated: No  
Finished: No  
Enclosed: Yes  
Contiguous: Yes  
Permitted: Yes  
Wet Space: No  
Addition: No  
Conversion: No



# 2532 Cobblestone Lane, Twin Falls, Twin Falls County, Idaho, United States, 83301

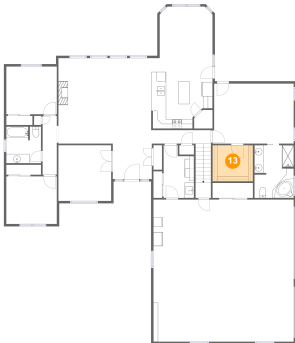
## 12 Floor 1 - Bedroom



Dimensions: 10'10" x 10'3"  
Area: 112 sq. ft  
Counted as Living Area:  
Yes

Heated: Yes  
Finished: Yes  
Enclosed: Yes  
Contiguous:  
Yes  
Permitted: Yes  
Wet Space: No  
Addition: No  
Conversion: No

## 13 Floor 1 - W.i.c.



Dimensions: 8'8" x 7'9"  
Area: 68 sq. ft  
Counted as Living Area:  
Yes

Heated: Yes  
Finished: Yes  
Enclosed: Yes  
Contiguous:  
Yes  
Permitted: Yes  
Wet Space: No  
Addition: No  
Conversion: No

## 14 Floor 1 - Room



Dimensions: 11'4" x 12'0"  
Area: 136 sq. ft  
Counted as Living Area:  
Yes

Heated: Yes  
Finished: Yes  
Enclosed: Yes  
Contiguous:  
Yes  
Permitted: Yes  
Wet Space: No  
Addition: No  
Conversion: No

# 2532 Cobblestone Lane, Twin Falls, Twin Falls County, Idaho, United States, 83301

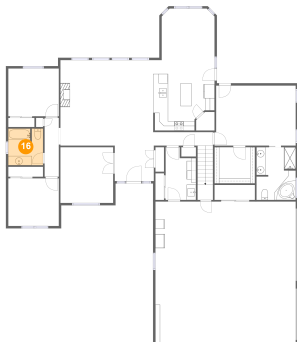
## 15 Floor 1 - Room



Dimensions: 8'8" x 3'3"  
Area: 28 sq. ft  
Counted as Living Area: No

Heated: Yes  
Finished: Yes  
Enclosed: Yes  
Contiguous: No  
Permitted: Yes  
Wet Space: No  
Addition: No  
Conversion: No

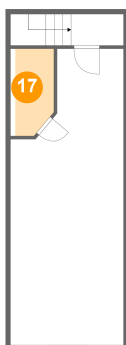
## 16 Floor 1 - Bath



Dimensions: 7'6" x 7'11"  
Area: 58 sq. ft  
Counted as Living Area: Yes

Heated: Yes  
Finished: Yes  
Enclosed: Yes  
Contiguous: Yes  
Permitted: Yes  
Wet Space: Yes  
Addition: No  
Conversion: No

## 17 Floor 2 - Room

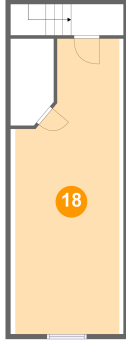


Dimensions: 4'6" x 9'0"  
Area: 33 sq. ft  
Counted as Living Area: No

Heated: Yes  
Finished: Yes  
Enclosed: Yes  
Contiguous: Yes  
Permitted: Yes  
Wet Space: No  
Addition: No  
Conversion: No

# 2532 Cobblestone Lane, Twin Falls, Twin Falls County, Idaho, United States, 83301

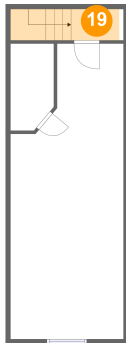
## 18 Floor 2 - Room



Dimensions: 11'9" x 30'7"  
Area: 292 sq. ft  
Counted as Living Area:  
Yes

Heated: Yes  
Finished: Yes  
Enclosed: Yes  
Contiguous:  
Yes  
Permitted: Yes  
Wet Space: No  
Addition: No  
Conversion: No

## 19 Floor 2 - Hall



Dimensions: 5'5" x 3'3"  
Area: 37 sq. ft  
Counted as Living Area:  
Yes

Heated: Yes  
Finished: Yes  
Enclosed: Yes  
Contiguous:  
Yes  
Permitted: Yes  
Wet Space: No  
Addition: No  
Conversion: No