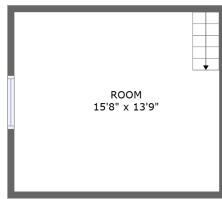
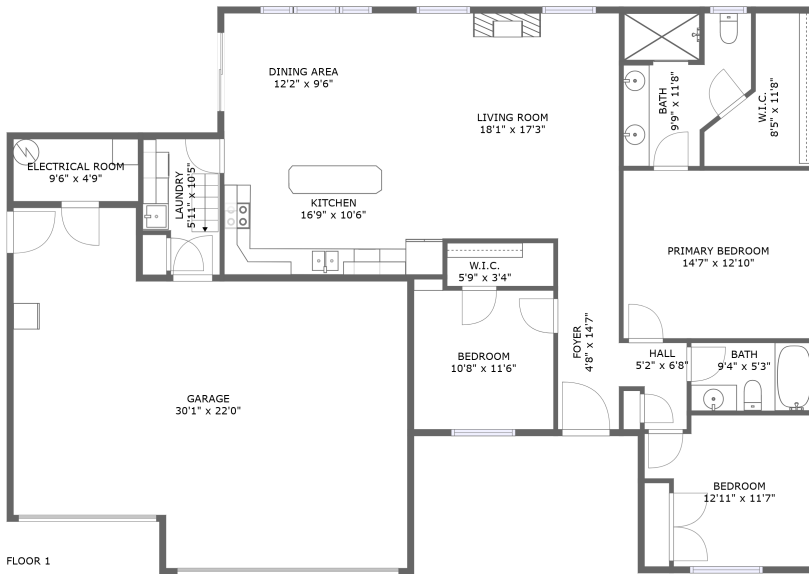


3801 Ward Ave, Spearfish, SD, US




FLOOR 2



FLOOR 1

Property summary

 **1** Garages

 **3** Bedrooms

 **2** Bathrooms

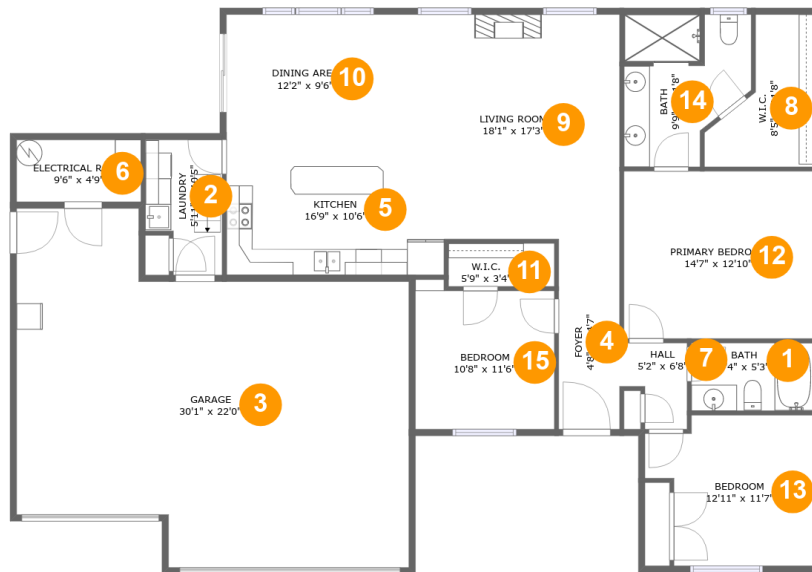
 **0** Half baths

 **2** Floors

 **1,735** Gross living area sqft

 **2,567** Total sqft

3801 Ward Ave, Spearfish, SD, US



Room dimensions

Floor 1

Total sqft: 2320

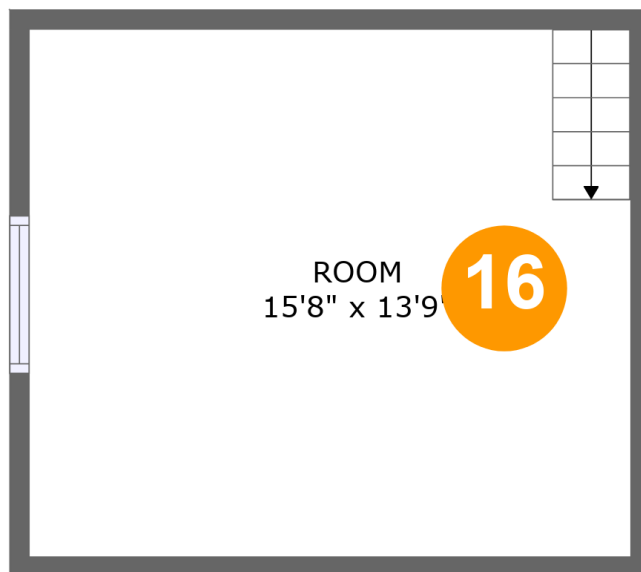
Living area: 1488

#		Dimensions	sqft	Counted as living area
1	Bath	9'4" x 5'3"	49 sq. ft	Yes
2	Utility	5'11" x 10'5"	54 sq. ft	No
3	Garage	30'1" x 22'0"	668 sq. ft	No
4	Entry	4'8" x 14'7"	68 sq. ft	Yes
5	Kitchen	16'9" x 10'6"	176 sq. ft	Yes
6	Room	9'6" x 4'9"	46 sq. ft	No
7	Hall	5'2" x 6'8"	28 sq. ft	Yes
8	Cl	8'5" x 11'8"	68 sq. ft	Yes
9	Living Room	18'1" x 17'3"	276 sq. ft	Yes
10	Dining Room	12'2" x 9'6"	116 sq. ft	Yes
11	Cl	5'9" x 3'4"	27 sq. ft	Yes

3801 Ward Ave, Spearfish, SD, US

#		Dimensions	sqft	Counted as living area
12	Bedroom	14'7" x 12'10"	187 sq. ft	Yes
13	Bedroom	12'11" x 11'7"	130 sq. ft	Yes
14	Bath	9'9" x 11'8"	95 sq. ft	Yes
15	Bedroom	10'8" x 11'6"	115 sq. ft	Yes

3801 Ward Ave, Spearfish, SD, US



Room dimensions

Floor 2

Total sqft: 247

Living area: 247

#		Dimensions	sqft	Counted as living area
16	Room	15'8" x 13'9"	216 sq. ft	Yes

3801 Ward Ave, Spearfish, SD, US

1 Floor 1 - Bath



Dimensions: 9'4" x 5'3"
Area: 49 sq. ft
Counted as living area: Yes

Heated: Yes
Finished: Yes
Enclosed: Yes
Contiguous: Yes
Permitted: Yes
Wet space: Yes
Addition: No
Conversion: No

2 Floor 1 - Utility

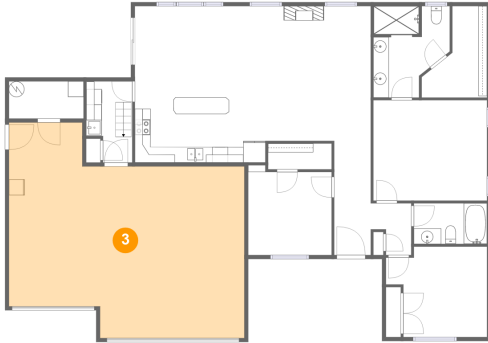


Dimensions: 5'11" x 10'5"
Area: 54 sq. ft
Counted as living area: No

Heated: Yes
Finished: Yes
Enclosed: Yes
Contiguous: No
Permitted: Yes
Wet space: No
Addition: No
Conversion: No

3801 Ward Ave, Spearfish, SD, US

3 Floor 1 - Garage



Dimensions: 30'1" x 22'0"
Area: 668 sq. ft
Counted as living area: No

Heated: No
Finished: No
Enclosed: Yes
Contiguous: Yes
Permitted: Yes
Wet space: No
Addition: No
Conversion: No

4 Floor 1 - Entry



Dimensions: 4'8" x 14'7"
Area: 68 sq. ft
Counted as living area: Yes

Heated: Yes
Finished: Yes
Enclosed: Yes
Contiguous: Yes
Permitted: Yes
Wet space: No
Addition: No
Conversion: No

5 Floor 1 - Kitchen



Dimensions: 16'9" x 10'6"
Area: 176 sq. ft
Counted as living area: Yes

Heated: Yes
Finished: Yes
Enclosed: Yes
Contiguous: Yes
Permitted: Yes
Wet space: No
Addition: No
Conversion: No

3801 Ward Ave, Spearfish, SD, US

6 Floor 1 - Room



Dimensions: 9'6" x 4'9"
Area: 46 sq. ft
Counted as living area: No

Heated: No
Finished: No
Enclosed: Yes
Contiguous: Yes
Permitted: Yes
Wet space: No
Addition: No
Conversion: No

7 Floor 1 - Hall



Dimensions: 5'2" x 6'8"
Area: 28 sq. ft
Counted as living area: Yes

Heated: Yes
Finished: Yes
Enclosed: Yes
Contiguous: Yes
Permitted: Yes
Wet space: No
Addition: No
Conversion: No

8 Floor 1 - Cl

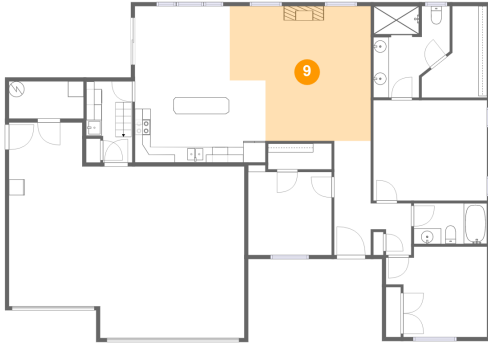


Dimensions: 8'5" x 11'8"
Area: 68 sq. ft
Counted as living area: Yes

Heated: Yes
Finished: Yes
Enclosed: Yes
Contiguous: Yes
Permitted: Yes
Wet space: No
Addition: No
Conversion: No

3801 Ward Ave, Spearfish, SD, US

9 Floor 1 - Living Room



Dimensions: 18'1" x 17'3"
Area: 276 sq. ft
Counted as living area: Yes

Heated: Yes
Finished: Yes
Enclosed: Yes
Contiguous: Yes
Permitted: Yes
Wet space: No
Addition: No
Conversion: No

10 Floor 1 - Dining Room



Dimensions: 12'2" x 9'6"
Area: 116 sq. ft
Counted as living area: Yes

Heated: Yes
Finished: Yes
Enclosed: Yes
Contiguous: Yes
Permitted: Yes
Wet space: No
Addition: No
Conversion: No

11 Floor 1 - Cl



Dimensions: 5'9" x 3'4"
Area: 27 sq. ft
Counted as living area: Yes

Heated: Yes
Finished: Yes
Enclosed: Yes
Contiguous: Yes
Permitted: Yes
Wet space: No
Addition: No
Conversion: No

3801 Ward Ave, Spearfish, SD, US

12 Floor 1 - Bedroom



Dimensions: 14'7" x 12'10"
Area: 187 sq. ft
Counted as living area: Yes

Heated: Yes
Finished: Yes
Enclosed: Yes
Contiguous: Yes
Permitted: Yes
Wet space: No
Addition: No
Conversion: No

13 Floor 1 - Bedroom



Dimensions: 12'11" x 11'7"
Area: 130 sq. ft
Counted as living area: Yes

Heated: Yes
Finished: Yes
Enclosed: Yes
Contiguous: Yes
Permitted: Yes
Wet space: No
Addition: No
Conversion: No

14 Floor 1 - Bath



Dimensions: 9'9" x 11'8"
Area: 95 sq. ft
Counted as living area: Yes

Heated: Yes
Finished: Yes
Enclosed: Yes
Contiguous: Yes
Permitted: Yes
Wet space: Yes
Addition: No
Conversion: No

3801 Ward Ave, Spearfish, SD, US

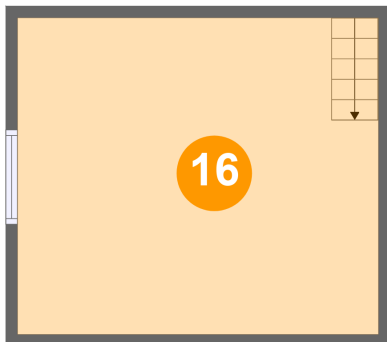
15 Floor 1 - Bedroom



Dimensions: 10'8" x 11'6"
Area: 115 sq. ft
Counted as living area: Yes

Heated: Yes
Finished: Yes
Enclosed: Yes
Contiguous: Yes
Permitted: Yes
Wet space: No
Addition: No
Conversion: No

16 Floor 2 - Room



Dimensions: 15'8" x 13'9"
Area: 216 sq. ft
Counted as living area: Yes

Heated: Yes
Finished: Yes
Enclosed: Yes
Contiguous: Yes
Permitted: Yes
Wet space: No
Addition: No
Conversion: No