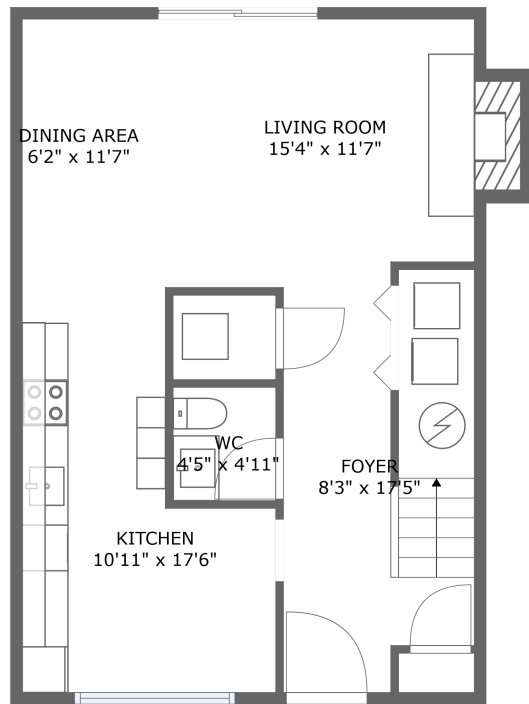
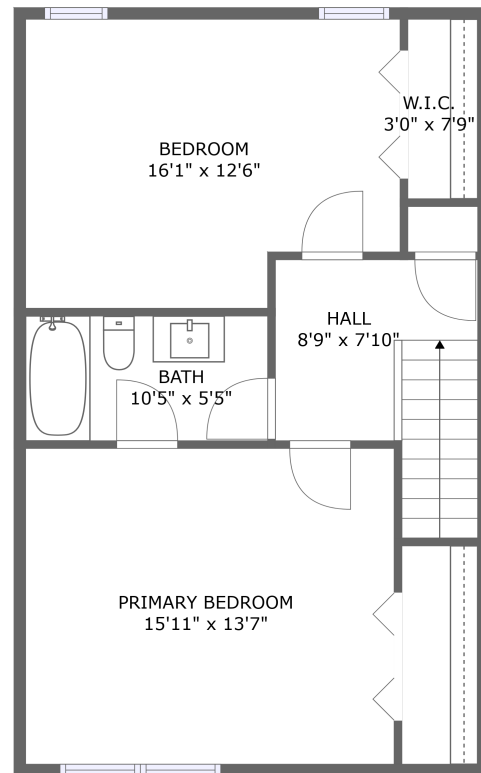


1310 S Lea Ct SE, Smyrna, GA, US



FLOOR 1




FLOOR 2

Property summary

 **0** Garages

 **2** Bedrooms

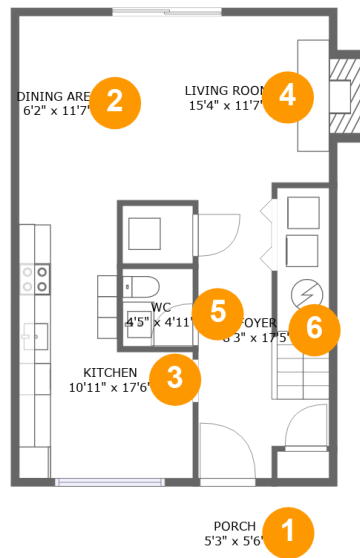
 **1** Bathrooms

 **1** Half baths

 **2** Floors

 **1,270** Gross living area sqft

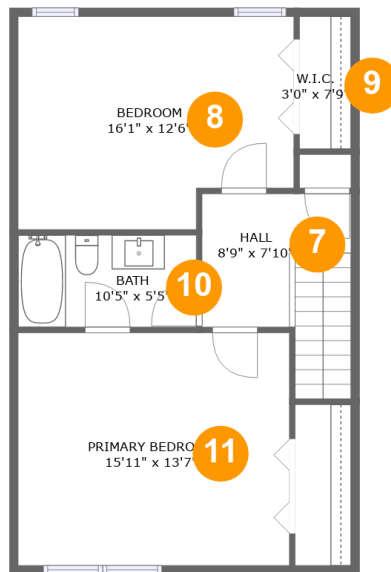
 **1,309** Total sqft

1310 S Lea Ct SE, Smyrna, GA, US**Room dimensions**

Floor 1

Total sqft: 647 Living area: 608

#		Dimensions	sqft	Counted as living area
1	Porch	5'3" x 5'6"	29 sq. ft	No
2	Dining Area	6'2" x 11'7"	71 sq. ft	Yes
3	Kitchen	10'11" x 17'6"	145 sq. ft	Yes
4	Living Room	15'4" x 11'7"	160 sq. ft	Yes
5	WC	4'5" x 4'11"	22 sq. ft	Yes
6	Foyer	8'3" x 17'5"	136 sq. ft	Yes

1310 S Lea Ct SE, Smyrna, GA, US**Room dimensions**

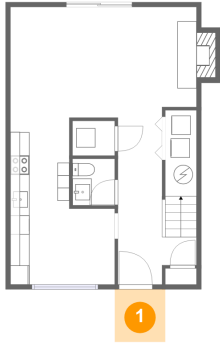
Floor 2

Total sqft: 662 Living area: 662

#		Dimensions	sqft	Counted as living area
7	Hall	8'9" x 7'10"	82 sq. ft	Yes
8	Bedroom	16'1" x 12'6"	187 sq. ft	Yes
9	W.I.C.	3'0" x 7'9"	23 sq. ft	Yes
10	Bath	10'5" x 5'5"	56 sq. ft	Yes
11	Primary Bedroom	15'11" x 13'7"	216 sq. ft	Yes

1310 S Lea Ct SE, Smyrna, GA, US

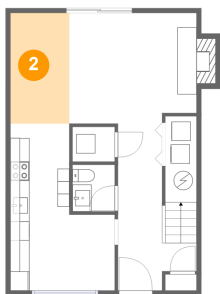
1 Floor 1 - Porch



Dimensions: 5'3" x 5'6"
Area: 29 sq. ft
Counted as living area: No

Heated: No
Finished: Yes
Enclosed: No
Contiguous: Yes
Permitted: Yes
Wet space: No
Addition: No
Conversion: No

2 Floor 1 - Dining Area

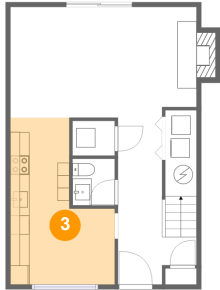


Dimensions: 6'2" x 11'7"
Area: 71 sq. ft
Counted as living area: Yes

Heated: Yes
Finished: Yes
Enclosed: Yes
Contiguous: Yes
Permitted: Yes
Wet space: No
Addition: No
Conversion: No

1310 S Lea Ct SE, Smyrna, GA, US

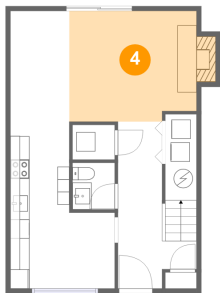
3 Floor 1 - Kitchen



Dimensions: 10'11" x 17'6"
Area: 145 sq. ft
Counted as living area: Yes

Heated: Yes
Finished: Yes
Enclosed: Yes
Contiguous: Yes
Permitted: Yes
Wet space: No
Addition: No
Conversion: No

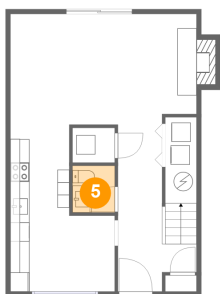
4 Floor 1 - Living Room



Dimensions: 15'4" x 11'7"
Area: 160 sq. ft
Counted as living area: Yes

Heated: Yes
Finished: Yes
Enclosed: Yes
Contiguous: Yes
Permitted: Yes
Wet space: No
Addition: No
Conversion: No

5 Floor 1 - WC

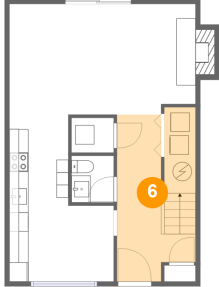


Dimensions: 4'5" x 4'11"
Area: 22 sq. ft
Counted as living area: Yes

Heated: Yes
Finished: Yes
Enclosed: Yes
Contiguous: Yes
Permitted: Yes
Wet space: Yes
Addition: No
Conversion: No

1310 S Lea Ct SE, Smyrna, GA, US

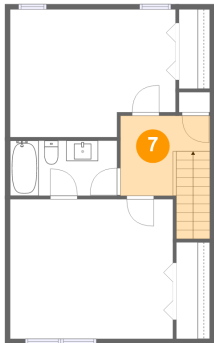
6 Floor 1 - Foyer



Dimensions: 8'3" x 17'5"
Area: 136 sq. ft
Counted as living area: Yes

Heated: Yes
Finished: Yes
Enclosed: Yes
Contiguous: Yes
Permitted: Yes
Wet space: No
Addition: No
Conversion: No

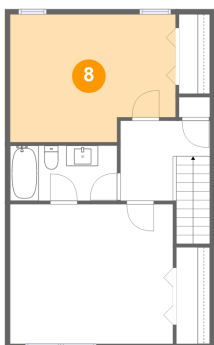
7 Floor 2 - Hall



Dimensions: 8'9" x 7'10"
Area: 82 sq. ft
Counted as living area: Yes

Heated: Yes
Finished: Yes
Enclosed: Yes
Contiguous: Yes
Permitted: Yes
Wet space: No
Addition: No
Conversion: No

8 Floor 2 - Bedroom

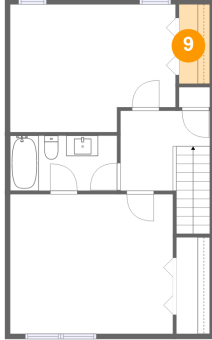


Dimensions: 16'1" x 12'6"
Area: 187 sq. ft
Counted as living area: Yes

Heated: Yes
Finished: Yes
Enclosed: Yes
Contiguous: Yes
Permitted: Yes
Wet space: No
Addition: No
Conversion: No

1310 S Lea Ct SE, Smyrna, GA, US

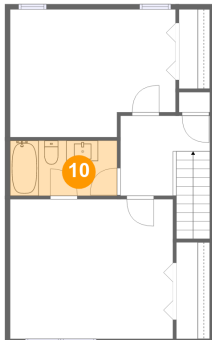
9 Floor 2 - W.I.C.



Dimensions: 3'0" x 7'9"
Area: 23 sq. ft
Counted as living area: Yes

Heated: Yes
Finished: Yes
Enclosed: Yes
Contiguous: Yes
Permitted: Yes
Wet space: No
Addition: No
Conversion: No

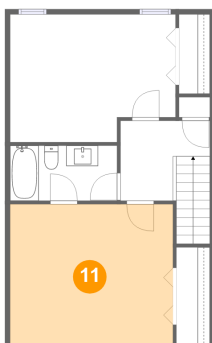
10 Floor 2 - Bath



Dimensions: 10'5" x 5'5"
Area: 56 sq. ft
Counted as living area: Yes

Heated: Yes
Finished: Yes
Enclosed: Yes
Contiguous: Yes
Permitted: Yes
Wet space: Yes
Addition: No
Conversion: No

11 Floor 2 - Primary Bedroom



Dimensions: 15'11" x 13'7"
Area: 216 sq. ft
Counted as living area: Yes

Heated: Yes
Finished: Yes
Enclosed: Yes
Contiguous: Yes
Permitted: Yes
Wet space: No
Addition: No
Conversion: No