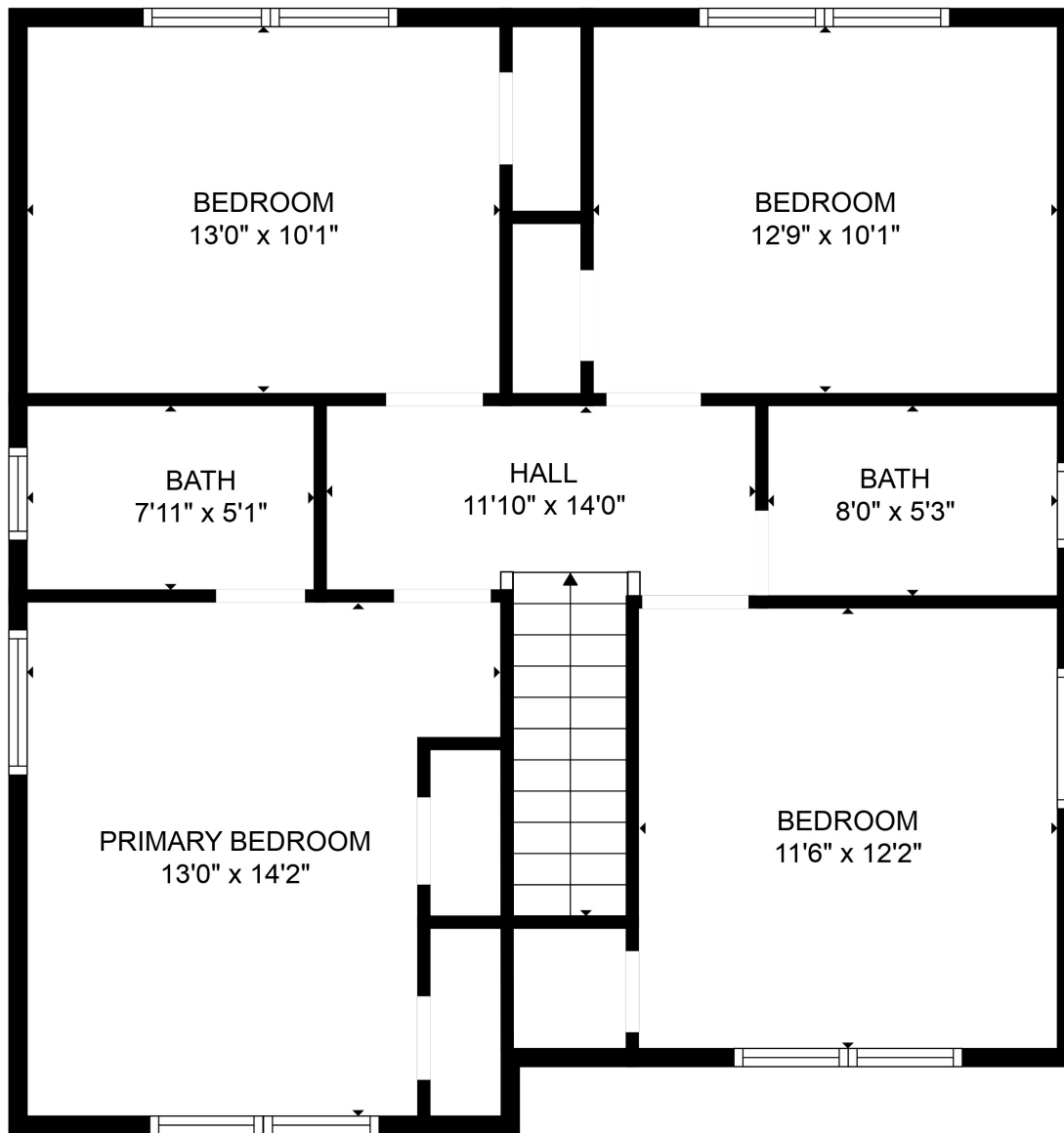


TOTAL: 2334 sq. ft
 Below Ground: 613 sq. ft, FLOOR 2: 898 sq. ft, FLOOR 3: 823 sq. ft
 Floor plans are intended to give a general indication of the property layout. Sizes and dimensions are estimate, Actual may vary.



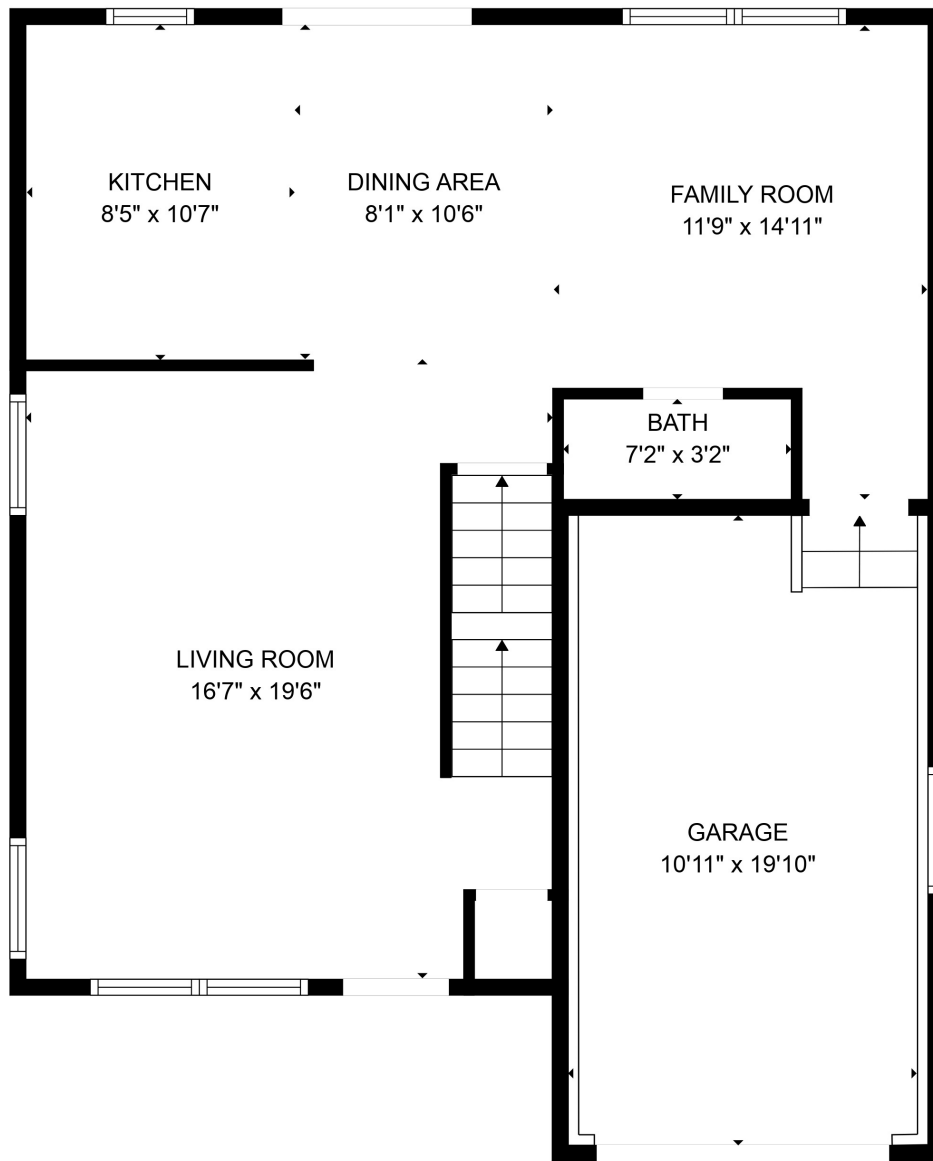


TOTAL: 2334 sq. ft

Below Ground: 613 sq. ft, FLOOR 2: 898 sq. ft, FLOOR 3: 823 sq. ft

Floor plans are intended to give a general indication of the property layout. Sizes and dimensions are estimate, Actual may vary.



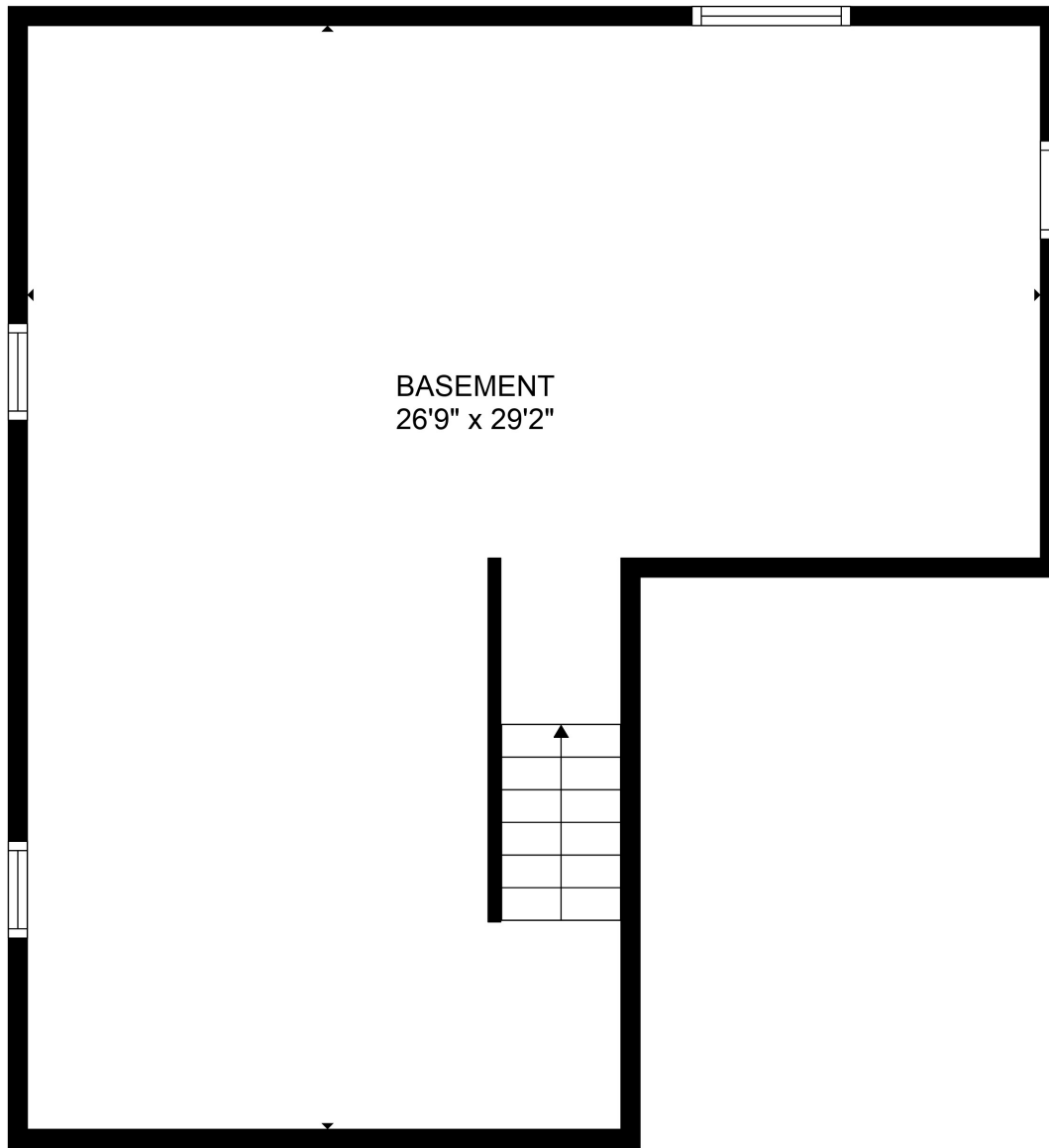


TOTAL: 2334 sq. ft

Below Ground: 613 sq. ft, FLOOR 2: 898 sq. ft, FLOOR 3: 823 sq. ft

Floor plans are intended to give a general indication of the property layout. Sizes and dimensions are estimate, Actual may vary.





BASEMENT
26'9" x 29'2"



TOTAL: 2334 sq. ft
Below Ground: 613 sq. ft, FLOOR 2: 898 sq. ft, FLOOR 3: 823 sq. ft
Floor plans are intended to give a general indication of the property layout. Sizes and dimensions are estimate, Actual may vary.

