

Home report

4211 Springview Court, Springview, Jefferson, Frederick County,
Maryland, United States, 21755



Total Area: 3576 sq. ft

Below Ground: 5 sq. ft, Floor 2: 848 sq. ft, Floor 3: 1834 sq. ft, Floor 4: 889 sq. ft

Excluded: Storage 101 sq. ft, Utility 219 sq. ft, Basement 173 sq. ft, Outdoor Patio 341 sq. ft, Fireplace 17 sq. ft, Outdoor Deck 324 sq. ft, Attic 199 sq. ft, Walls: 305 sq. ft

Property summary

**4** Floors

**5** Bedrooms

**4** Bathrooms

Home report

**4211 Springview Court, Springview, Jefferson, Frederick County,
Maryland, United States, 21755**



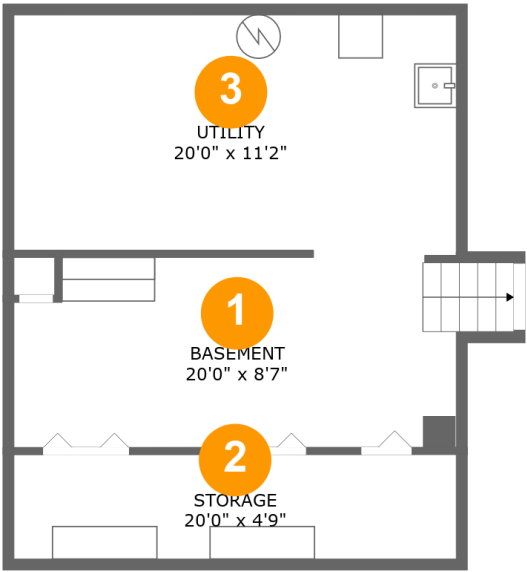
1
Half baths



1
Garages

Home report

4211 Springview Court, Springview, Jefferson, Frederick County,
Maryland, United States, 21755



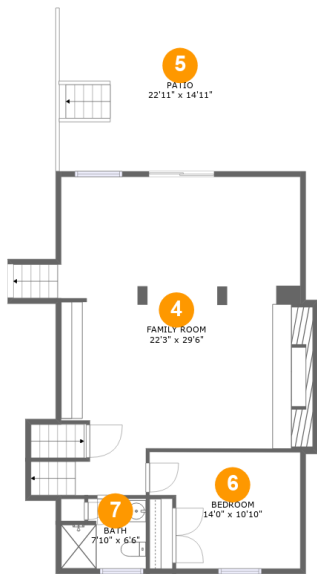
Room dimensions

Floor 1 Below ground Total:5sqft Excluded: 493sqft

#		Max Dimensions	sqft	Included
1	Basement	20'0" x 8'7"	173 sq. ft	No
2	Storage	20'0" x 4'9"	94 sq. ft	No
3	Utility	20'0" x 11'2"	215 sq. ft	No

Home report

4211 Springview Court, Springview, Jefferson, Frederick County,
Maryland, United States, 21755



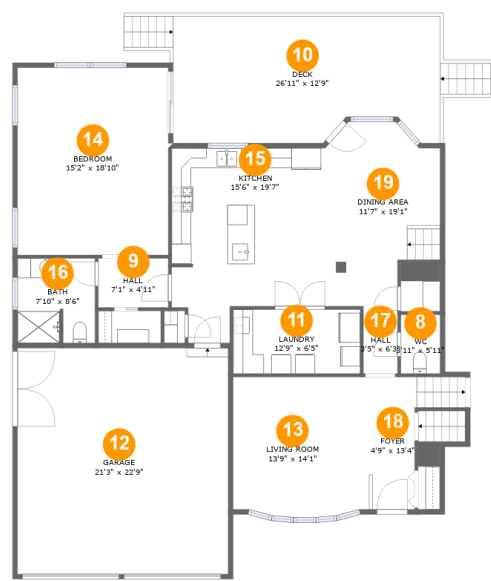
Room dimensions

Floor 2 Total:848sqft Excluded: 358sqft

#		Max Dimensions	sqft	Included
4	Family Room	22'3" x 29'6"	622 sq. ft	Yes
5	Patio	22'11" x 14'11"	341 sq. ft	No
6	Bedroom	14'0" x 10'10"	135 sq. ft	Yes
7	Bath	7'10" x 6'6"	45 sq. ft	Yes

Home report

4211 Springview Court, Springview, Jefferson, Frederick County,
Maryland, United States, 21755



Room dimensions

Floor 3 Total:1834sqft Excluded: 324sqft

#		Max Dimensions	sqft	Included
8	WC	3'11" x 5'11"	23 sq. ft	Yes
9	Hall	7'1" x 4'11"	35 sq. ft	Yes
10	Deck	26'11" x 12'9"	324 sq. ft	No
11	Laundry	12'9" x 6'5"	83 sq. ft	Yes
12	Garage	21'3" x 22'9"	483 sq. ft	Yes
13	Living Room	13'9" x 14'1"	189 sq. ft	Yes
14	Bedroom	15'2" x 18'10"	286 sq. ft	Yes
15	Kitchen	15'6" x 19'7"	261 sq. ft	Yes
16	Bath	7'10" x 8'6"	65 sq. ft	Yes
17	Hall	3'5" x 6'3"	22 sq. ft	Yes
18	Foyer	4'9" x 13'4"	77 sq. ft	Yes

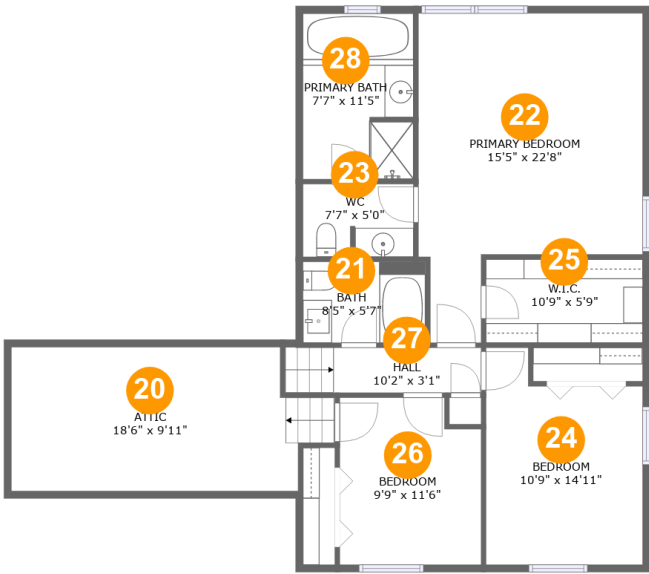
Home report

4211 Springview Court, Springview, Jefferson, Frederick County,
Maryland, United States, 21755

#		Max Dimensions	sqft	Included
19	Dining Area	11'7" x 19'1"	185 sq. ft	Yes

Home report

4211 Springview Court, Springview, Jefferson, Frederick County,
Maryland, United States, 21755

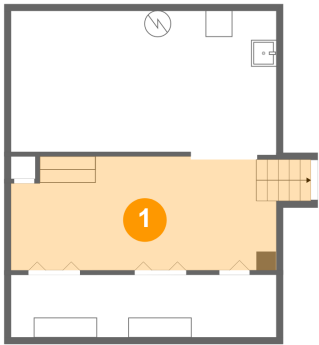


Room dimensions

Floor 4 Total:889sqft Excluded: 199sqft

#		Max Dimensions	sqft	Included
20	Attic	18'6" x 9'11"	199 sq. ft	No
21	Bath	8'5" x 5'7"	47 sq. ft	Yes
22	Primary Bedroom	15'5" x 22'8"	278 sq. ft	Yes
23	WC	7'7" x 5'0"	37 sq. ft	Yes
24	Bedroom	10'9" x 14'11"	140 sq. ft	Yes
25	W.I.C.	10'9" x 5'9"	62 sq. ft	Yes
26	Bedroom	9'9" x 11'6"	107 sq. ft	Yes
27	Hall	10'2" x 3'1"	42 sq. ft	Yes
28	Primary Bath	7'7" x 11'5"	86 sq. ft	Yes

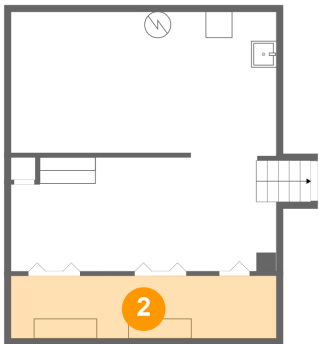
1 Floor 1 - Basement



Max Dimensions: 20'0" x 8'7"
Calculated Area: 173 sq. ft
Included: No

Heated: Yes
Finished: No
Enclosed: Yes
Contiguous: Yes
Permitted: Yes
Wet space: No
Addition: No
Conversion: No

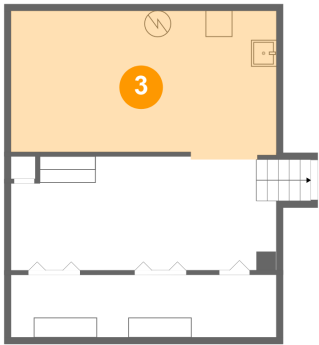
2 Floor 1 - Storage



Max Dimensions: 20'0" x 4'9"
Calculated Area: 94 sq. ft
Included: No

Heated: No
Finished: No
Enclosed: No
Contiguous: Yes
Permitted: Yes
Wet space: No
Addition: No
Conversion: No

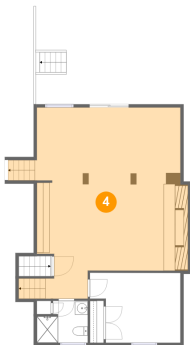
3 Floor 1 - Utility



Max Dimensions: 20'0" x 11'2"
Calculated Area: 215 sq. ft
Included: No

Heated: Yes
Finished: No
Enclosed: Yes
Contiguous: Yes
Permitted: Yes
Wet space: No
Addition: No
Conversion: No

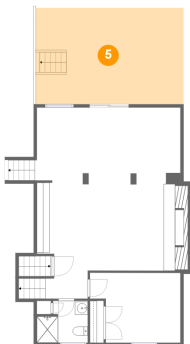
4 Floor 2 - Family Room



Max Dimensions: 22'3" x 29'6"
Calculated Area: 622 sq. ft
Included: Yes

Heated: Yes
Finished: Yes
Enclosed: Yes
Contiguous: Yes
Permitted: Yes
Wet space: No
Addition: No
Conversion: No

5 Floor 2 - Patio

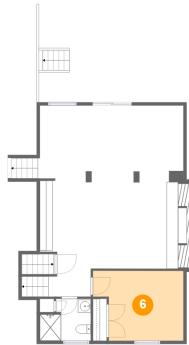


Max Dimensions: 22'11" x 14'11"
Calculated Area: 341 sq. ft
Included: No

Heated: No
Finished: Yes
Enclosed: No
Contiguous: Yes
Permitted: Yes
Wet space: No
Addition: No
Conversion: No

4211 Springview Court, Springview, Jefferson, Frederick County,
Maryland, United States, 21755

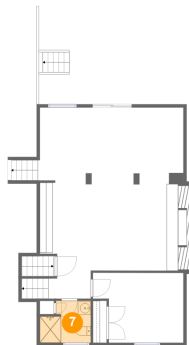
6 Floor 2 - Bedroom



Max Dimensions: 14'0" x 10'10"
Calculated Area: 135 sq. ft
Included: Yes

Heated: Yes
Finished: Yes
Enclosed: Yes
Contiguous: Yes
Permitted: Yes
Wet space: No
Addition: No
Conversion: No

7 Floor 2 - Bath



Max Dimensions: 7'10" x 6'6"
Calculated Area: 45 sq. ft
Included: Yes

Heated: Yes
Finished: Yes
Enclosed: Yes
Contiguous: Yes
Permitted: Yes
Wet space: Yes
Addition: No
Conversion: No

8 Floor 3 - WC



Max Dimensions: 3'11" x 5'11"
Calculated Area: 23 sq. ft
Included: Yes

Heated: Yes
Finished: Yes
Enclosed: Yes
Contiguous: Yes
Permitted: Yes
Wet space: Yes
Addition: No
Conversion: No

9 Floor 3 - Hall



Max Dimensions: 7'1" x 4'11"
Calculated Area: 35 sq. ft
Included: Yes

Heated: Yes
Finished: Yes
Enclosed: Yes
Contiguous: Yes
Permitted: Yes
Wet space: No
Addition: No
Conversion: No

10 Floor 3 - Deck



Max Dimensions: 26'11" x 12'9"
Calculated Area: 324 sq. ft
Included: No

Heated: No
Finished: Yes
Enclosed: No
Contiguous: Yes
Permitted: Yes
Wet space: No
Addition: No
Conversion: No

11 Floor 3 - Laundry



Max Dimensions: 12'9" x 6'5"
Calculated Area: 83 sq. ft
Included: No

Heated: Yes
Finished: Yes
Enclosed: Yes
Contiguous: No
Permitted: Yes
Wet space: No
Addition: No
Conversion: No

12 Floor 3 - Garage



Max Dimensions: 21'3" x 22'9"
Calculated Area: 483 sq. ft
Included: No

Heated: No
Finished: Yes
Enclosed: Yes
Contiguous: Yes
Permitted: Yes
Wet space: No
Addition: No
Conversion: No

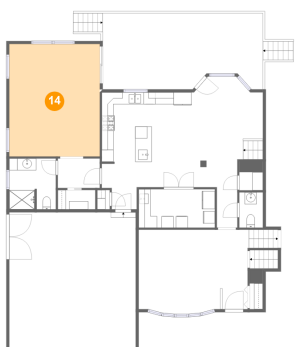
13 Floor 3 - Living Room



Max Dimensions: 13'9" x 14'1"
Calculated Area: 189 sq. ft
Included: Yes

Heated: Yes
Finished: Yes
Enclosed: Yes
Contiguous: Yes
Permitted: Yes
Wet space: No
Addition: No
Conversion: No

14 Floor 3 - Bedroom



Max Dimensions: 15'2" x 18'10"
Calculated Area: 286 sq. ft
Included: Yes

Heated: Yes
Finished: Yes
Enclosed: Yes
Contiguous: Yes
Permitted: Yes
Wet space: No
Addition: No
Conversion: No

4211 Springview Court, Springview, Jefferson, Frederick County,
Maryland, United States, 21755

15 Floor 3 - Kitchen



Max Dimensions: 15'6" x 19'7"
Calculated Area: 261 sq. ft
Included: Yes

Heated: Yes
Finished: Yes
Enclosed: Yes
Contiguous: Yes
Permitted: Yes
Wet space: No
Addition: No
Conversion: No

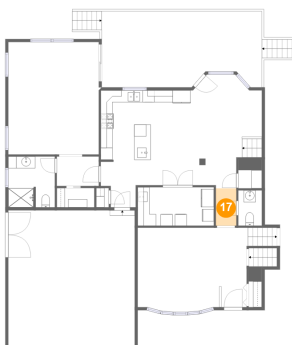
16 Floor 3 - Bath



Max Dimensions: 7'10" x 8'6"
Calculated Area: 65 sq. ft
Included: Yes

Heated: Yes
Finished: Yes
Enclosed: Yes
Contiguous: Yes
Permitted: Yes
Wet space: Yes
Addition: No
Conversion: No

17 Floor 3 - Hall



Max Dimensions: 3'5" x 6'3"
Calculated Area: 22 sq. ft
Included: Yes

Heated: Yes
Finished: Yes
Enclosed: Yes
Contiguous: Yes
Permitted: Yes
Wet space: No
Addition: No
Conversion: No

18 Floor 3 - Foyer



Max Dimensions: 4'9" x 13'4"
Calculated Area: 77 sq. ft
Included: Yes

Heated: Yes
Finished: Yes
Enclosed: Yes
Contiguous: Yes
Permitted: Yes
Wet space: No
Addition: No
Conversion: No

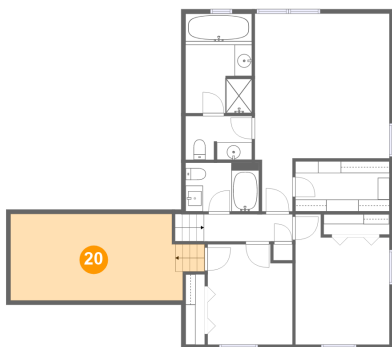
19 Floor 3 - Dining Area



Max Dimensions: 11'7" x 19'1"
Calculated Area: 185 sq. ft
Included: Yes

Heated: Yes
Finished: Yes
Enclosed: Yes
Contiguous: Yes
Permitted: Yes
Wet space: No
Addition: No
Conversion: No

20 Floor 4 - Attic

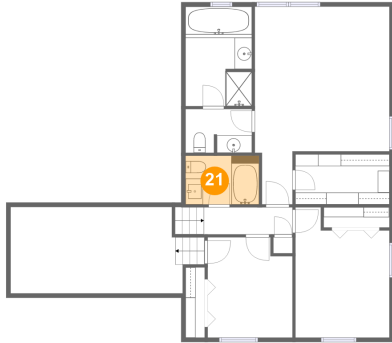


Max Dimensions: 18'6" x 9'11"
Calculated Area: 199 sq. ft
Included: No

Heated: No
Finished: No
Enclosed: Yes
Contiguous: Yes
Permitted: Yes
Wet space: No
Addition: No
Conversion: No

4211 Springview Court, Springview, Jefferson, Frederick County,
Maryland, United States, 21755

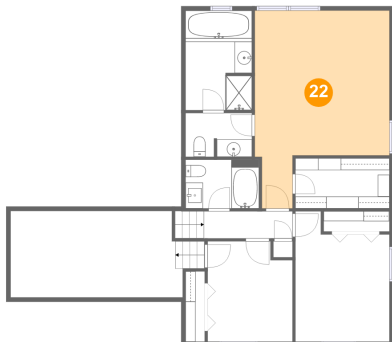
21 Floor 4 - Bath



Max Dimensions: 8'5" x 5'7"
Calculated Area: 47 sq. ft
Included: Yes

Heated: Yes
Finished: Yes
Enclosed: Yes
Contiguous: Yes
Permitted: Yes
Wet space: Yes
Addition: No
Conversion: No

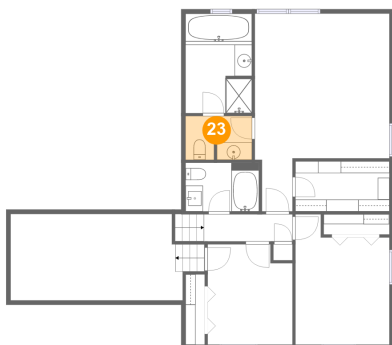
22 Floor 4 - Primary Bedroom



Max Dimensions: 15'5" x 22'8"
Calculated Area: 278 sq. ft
Included: Yes

Heated: Yes
Finished: Yes
Enclosed: Yes
Contiguous: Yes
Permitted: Yes
Wet space: No
Addition: No
Conversion: No

23 Floor 4 - WC



Max Dimensions: 7'7" x 5'0"
Calculated Area: 37 sq. ft
Included: Yes

Heated: Yes
Finished: Yes
Enclosed: Yes
Contiguous: Yes
Permitted: Yes
Wet space: Yes
Addition: No
Conversion: No

24 Floor 4 - Bedroom



Max Dimensions: 10'9" x 14'11"
Calculated Area: 140 sq. ft
Included: Yes

Heated: Yes
Finished: Yes
Enclosed: Yes
Contiguous: Yes
Permitted: Yes
Wet space: No
Addition: No
Conversion: No

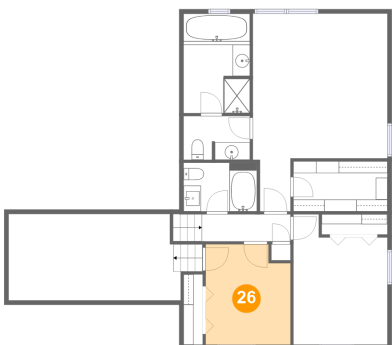
25 Floor 4 - W.I.C.



Max Dimensions: 10'9" x 5'9"
Calculated Area: 62 sq. ft
Included: Yes

Heated: Yes
Finished: Yes
Enclosed: Yes
Contiguous: Yes
Permitted: Yes
Wet space: No
Addition: No
Conversion: No

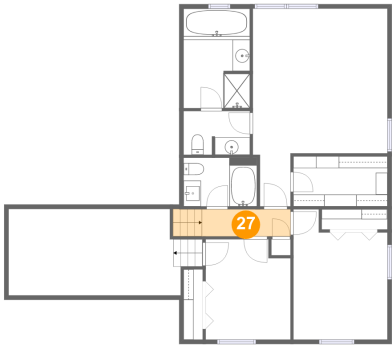
26 Floor 4 - Bedroom



Max Dimensions: 9'9" x 11'6"
Calculated Area: 107 sq. ft
Included: Yes

Heated: Yes
Finished: Yes
Enclosed: Yes
Contiguous: Yes
Permitted: Yes
Wet space: No
Addition: No
Conversion: No

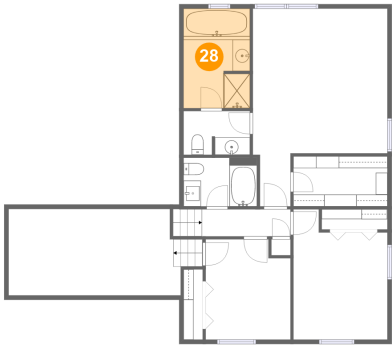
27 Floor 4 - Hall



Max Dimensions: 10'2" x 3'1"
Calculated Area: 42 sq. ft
Included: Yes

Heated: Yes
Finished: Yes
Enclosed: Yes
Contiguous: Yes
Permitted: Yes
Wet space: No
Addition: No
Conversion: No

28 Floor 4 - Primary Bath



Max Dimensions: 7'7" x 11'5"
Calculated Area: 86 sq. ft
Included: Yes

Heated: Yes
Finished: Yes
Enclosed: Yes
Contiguous: Yes
Permitted: Yes
Wet space: Yes
Addition: No
Conversion: No