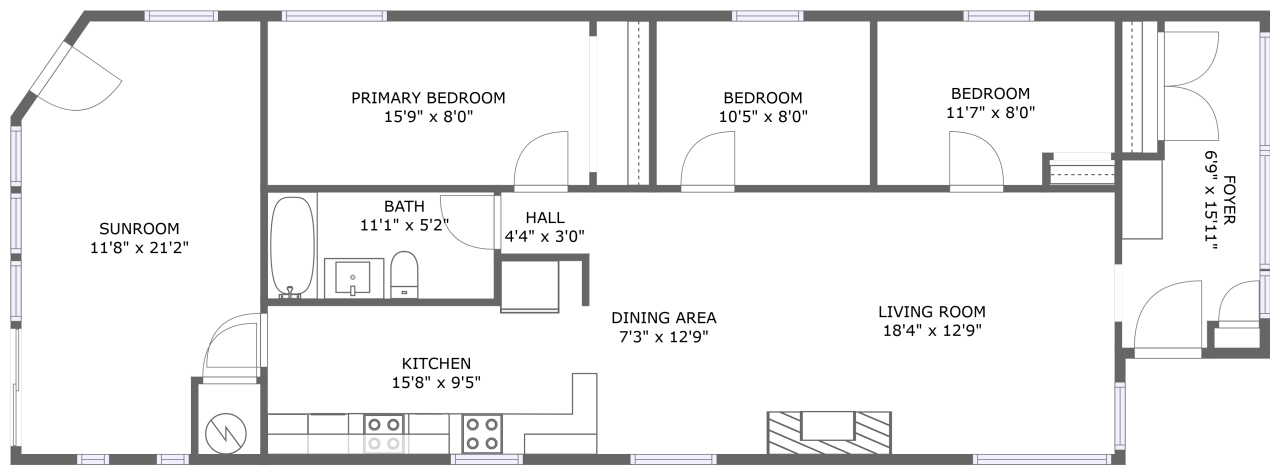



Home report


3938 Algonquin Avenue,Innisfil,Ontario,Canada





FLOOR 1


Property summary


**0** Garages


**3** Bedrooms

**1** Bathrooms

**0** Half baths

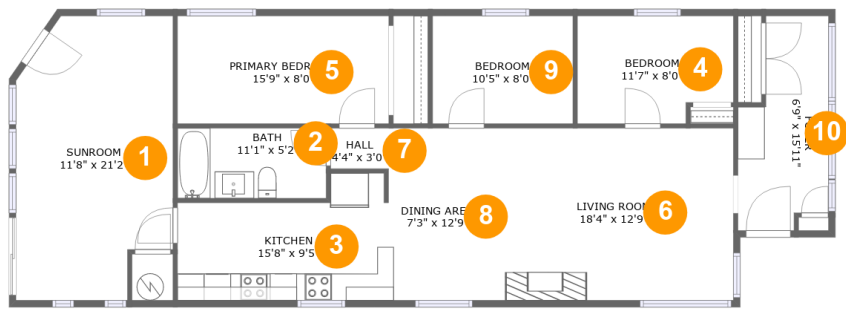
**1** Floors

**1,301** Gross living area sqft

**1,313** Total sqft

Home report

3938 Algonquin Avenue,Innisfil,Ontario,Canada



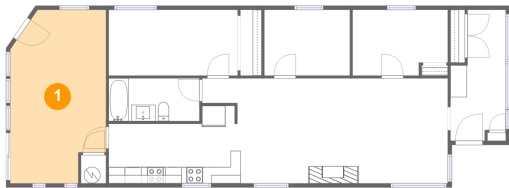
Room dimensions

Floor 1

Total sqft: 1313 Living area: 1301

#		Dimensions	sqft	Counted as living area
1	Sunroom	11'8" x 21'2"	226 sq. ft	Yes
2	Bath	11'1" x 5'2"	58 sq. ft	Yes
3	Kitchen	15'8" x 9'5"	122 sq. ft	Yes
4	Bedroom	11'7" x 8'0"	87 sq. ft	Yes
5	Primary Bedroom	15'9" x 8'0"	126 sq. ft	Yes
6	Living Room	18'4" x 12'9"	235 sq. ft	Yes
7	Hall	4'4" x 3'0"	13 sq. ft	Yes
8	Dining Area	7'3" x 12'9"	93 sq. ft	Yes
9	Bedroom	10'5" x 8'0"	84 sq. ft	Yes
10	Foyer	6'9" x 15'11"	90 sq. ft	Yes

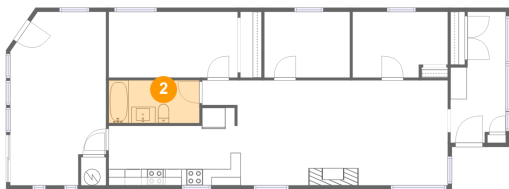
1 Floor 1 - Sunroom



Dimensions: 11'8" x 21'2"
Area: 226 sq. ft
Counted as living area: Yes

Heated: Yes
Finished: Yes
Enclosed: Yes
Contiguous: Yes
Permitted: Yes
Wet space: No
Addition: No
Conversion: No

2 Floor 1 - Bath



Dimensions: 11'1" x 5'2"
Area: 58 sq. ft
Counted as living area: Yes

Heated: Yes
Finished: Yes
Enclosed: Yes
Contiguous: Yes
Permitted: Yes
Wet space: Yes
Addition: No
Conversion: No

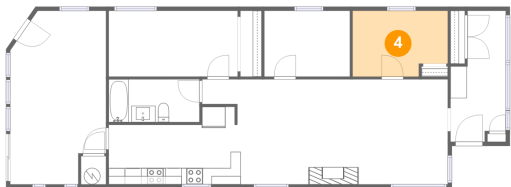
3 Floor 1 - Kitchen



Dimensions: 15'8" x 9'5"
Area: 122 sq. ft
Counted as living area: Yes

Heated: Yes
Finished: Yes
Enclosed: Yes
Contiguous: Yes
Permitted: Yes
Wet space: No
Addition: No
Conversion: No

4 Floor 1 - Bedroom



Dimensions: 11'7" x 8'0"
Area: 87 sq. ft
Counted as living area: Yes

Heated: Yes
Finished: Yes
Enclosed: Yes
Contiguous: Yes
Permitted: Yes
Wet space: No
Addition: No
Conversion: No

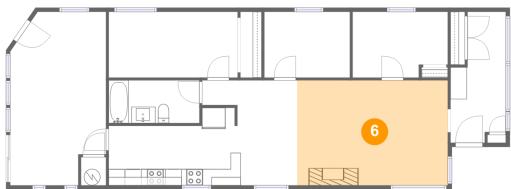
5 Floor 1 - Primary Bedroom



Dimensions: 15'9" x 8'0"
Area: 126 sq. ft
Counted as living area: Yes

Heated: Yes
Finished: Yes
Enclosed: Yes
Contiguous: Yes
Permitted: Yes
Wet space: No
Addition: No
Conversion: No

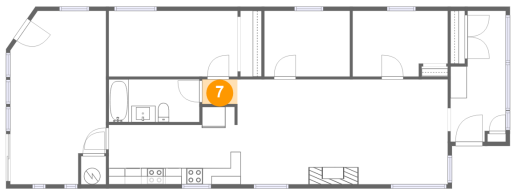
6 Floor 1 - Living Room



Dimensions: 18'4" x 12'9"
Area: 235 sq. ft
Counted as living area: Yes

Heated: Yes
Finished: Yes
Enclosed: Yes
Contiguous: Yes
Permitted: Yes
Wet space: No
Addition: No
Conversion: No

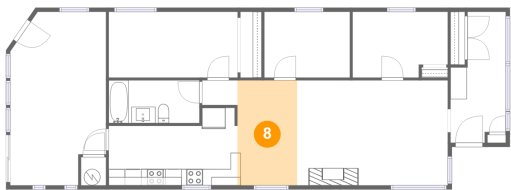
7 Floor 1 - Hall



Dimensions: 4'4" x 3'0"
Area: 13 sq. ft
Counted as living area: Yes

Heated: Yes
Finished: Yes
Enclosed: Yes
Contiguous: Yes
Permitted: Yes
Wet space: No
Addition: No
Conversion: No

8 Floor 1 - Dining Area



Dimensions: 7'3" x 12'9"
Area: 93 sq. ft
Counted as living area: Yes

Heated: Yes
Finished: Yes
Enclosed: Yes
Contiguous: Yes
Permitted: Yes
Wet space: No
Addition: No
Conversion: No

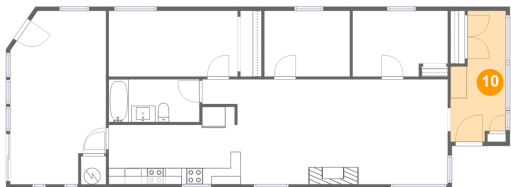
9 Floor 1 - Bedroom



Dimensions: 10'5" x 8'0"
Area: 84 sq. ft
Counted as living area: Yes

Heated: Yes
Finished: Yes
Enclosed: Yes
Contiguous: Yes
Permitted: Yes
Wet space: No
Addition: No
Conversion: No

10 Floor 1 - Foyer



Dimensions: 6'9" x 15'11"
Area: 90 sq. ft
Counted as living area: Yes

Heated: Yes
Finished: Yes
Enclosed: Yes
Contiguous: Yes
Permitted: Yes
Wet space: No
Addition: No
Conversion: No