

# 4921 Cave Spring Lane, Woodmont Manor, Cave Spring, Roanoke, Roanoke County, Virginia,




## Property Summary


 **1** garages

 **4** bedrooms

 **2** bathrooms

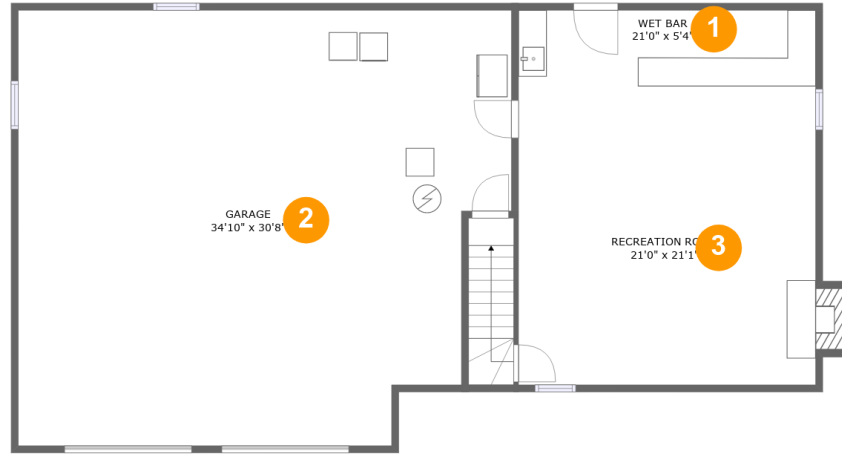
 **0** half baths

 **2** floors

 **1,871** Gross Living Area sqft

 **3,728** total sqft

**4921 Cave Spring Lane, Woodmont Manor, Cave Spring, Roanoke, Roanoke County, Virginia,**



**Room Dimensions**

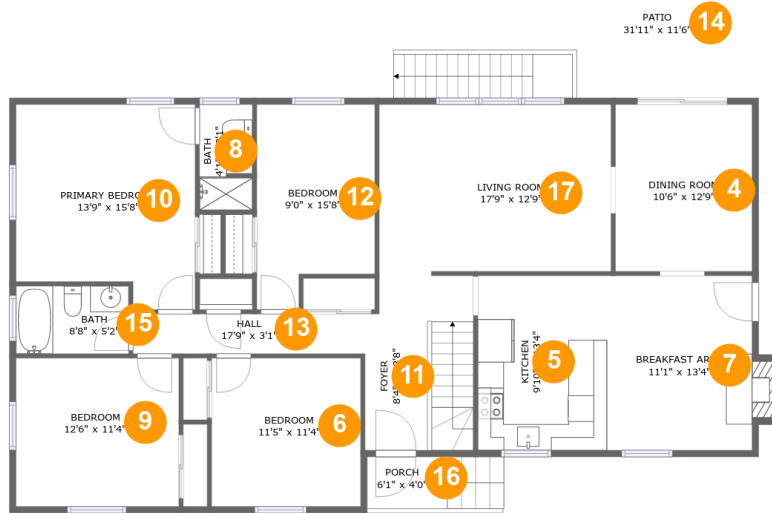
**Floor 1**

**Total sqft: 1702**

**Living area: 180**

#	Room name	Dimensions	Area (sqft)	Counted as Living Area
1	Wet Bar	21'0" x 5'4"	112 sq. ft	Yes
2	Garage	34'10" x 30'8"	991 sq. ft	No
3	Recreation Room	21'0" x 21'1"	451 sq. ft	No

# 4921 Cave Spring Lane, Woodmont Manor, Cave Spring, Roanoke, Roanoke County, Virginia,



## Room Dimensions

Floor 2

Total sqft: 2026

Living area: 1691

#	Room name	Dimensions	Area (sqft)	Counted as Living Area
4	Dining Room	10'6" x 12'9"	133 sq. ft	Yes
5	Kitchen	9'10" x 13'4"	132 sq. ft	Yes
6	Bedroom	11'5" x 11'4"	129 sq. ft	Yes
7	Breakfast Area	11'1" x 13'4"	157 sq. ft	Yes
8	Bath	4'1" x 8'1"	32 sq. ft	Yes
9	Bedroom	12'6" x 11'4"	141 sq. ft	Yes
10	Primary Bedroom	13'9" x 15'8"	196 sq. ft	Yes
11	Foyer	8'4" x 13'8"	109 sq. ft	Yes
12	Bedroom	9'0" x 15'8"	126 sq. ft	Yes
13	Hall	17'9" x 3'1"	54 sq. ft	Yes
14	Patio	31'11" x 11'6"	283 sq. ft	No

Scan captured on Mon, 16 Sep 2024 17:05:13 GMT

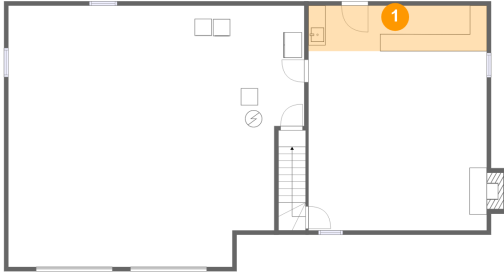
Information is calculated by CubiCasa technology; deemed highly reliable but not guaranteed.

**4921 Cave Spring Lane, Woodmont Manor, Cave Spring, Roanoke, Roanoke County, Virginia,**

#	Room name	Dimensions	Area (sqft)	Counted as Living Area
15	Bath	8'8" x 5'2"	45 sq. ft	Yes
16	Porch	6'1" x 4'0"	41 sq. ft	No
17	Living Room	17'9" x 12'9"	226 sq. ft	Yes

# 4921 Cave Spring Lane, Woodmont Manor, Cave Spring, Roanoke, Roanoke County, Virginia,

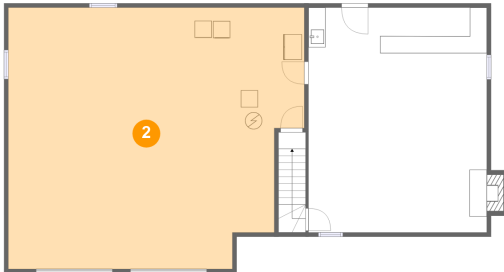
## 1 Floor 1 - Wet Bar



Dimensions: 21'0" x 5'4"  
Area: 112 sq. ft  
Counted as Living Area:  
Yes

Heated: Yes  
Finished: Yes  
Enclosed: Yes  
Contiguous:  
Yes  
Permitted: Yes  
Wet Space: No  
Addition: No  
Conversion: No

## 2 Floor 1 - Garage

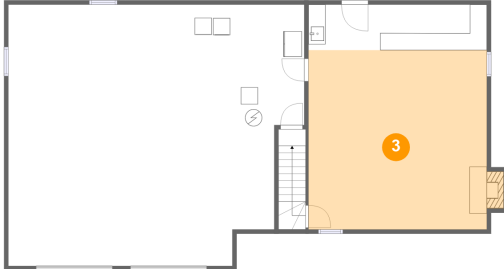


Dimensions: 34'10" x 30'8"  
Area: 991 sq. ft  
Counted as Living Area: No

Heated: No  
Finished: No  
Enclosed: Yes  
Contiguous: Yes  
Permitted: Yes  
Wet Space: No  
Addition: No  
Conversion: No

# 4921 Cave Spring Lane, Woodmont Manor, Cave Spring, Roanoke, Roanoke County, Virginia,

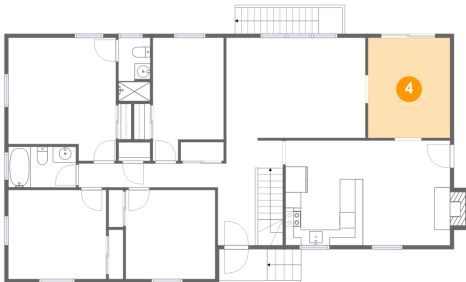
## 3 Floor 1 - Recreation Room



Dimensions: 21'0" x 21'1"  
Area: 451 sq. ft  
Counted as Living Area: No

Heated: Yes  
Finished: Yes  
Enclosed: Yes  
Contiguous: Yes  
Permitted: Yes  
Wet Space: No  
Addition: No  
Conversion: No

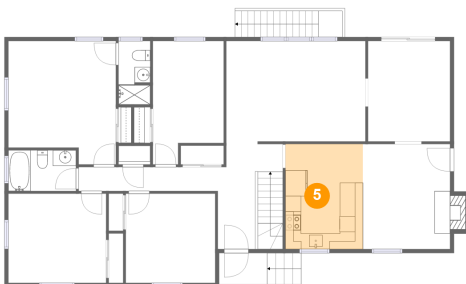
## 4 Floor 2 - Dining Room



Dimensions: 10'6" x 12'9"  
Area: 133 sq. ft  
Counted as Living Area: Yes

Heated: Yes  
Finished: Yes  
Enclosed: Yes  
Contiguous: Yes  
Permitted: Yes  
Wet Space: No  
Addition: No  
Conversion: No

## 5 Floor 2 - Kitchen

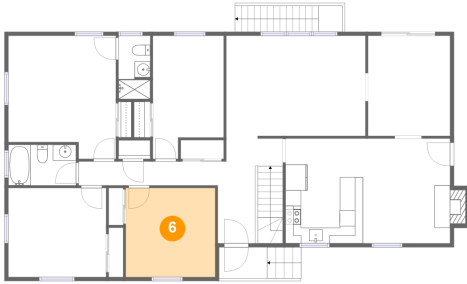


Dimensions: 9'10" x 13'4"  
Area: 132 sq. ft  
Counted as Living Area: Yes

Heated: Yes  
Finished: Yes  
Enclosed: Yes  
Contiguous: Yes  
Permitted: Yes  
Wet Space: No  
Addition: No  
Conversion: No

# 4921 Cave Spring Lane, Woodmont Manor, Cave Spring, Roanoke, Roanoke County, Virginia,

## 6 Floor 2 - Bedroom



Dimensions: 11'5" x 11'4"  
Area: 129 sq. ft  
Counted as Living Area:  
Yes

Heated: Yes  
Finished: Yes  
Enclosed: Yes  
Contiguous:  
Yes  
Permitted: Yes  
Wet Space: No  
Addition: No  
Conversion: No

## 7 Floor 2 - Breakfast Area



Dimensions: 11'1" x 13'4"  
Area: 157 sq. ft  
Counted as Living Area:  
Yes

Heated: Yes  
Finished: Yes  
Enclosed: Yes  
Contiguous:  
Yes  
Permitted: Yes  
Wet Space: No  
Addition: No  
Conversion: No

## 8 Floor 2 - Bath

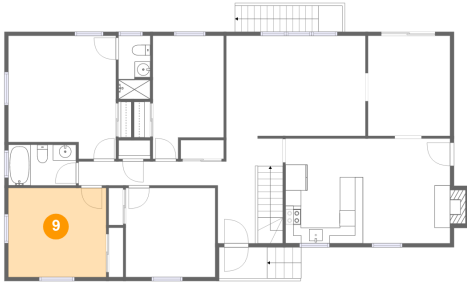


Dimensions: 4'1" x 8'1"  
Area: 32 sq. ft  
Counted as Living Area:  
Yes

Heated: Yes  
Finished: Yes  
Enclosed: Yes  
Contiguous:  
Yes  
Permitted: Yes  
Wet Space: Yes  
Addition: No  
Conversion: No

# 4921 Cave Spring Lane, Woodmont Manor, Cave Spring, Roanoke, Roanoke County, Virginia,

## 9 Floor 2 - Bedroom



Dimensions: 12'6" x 11'4"  
Area: 141 sq. ft  
Counted as Living Area:  
Yes

Heated: Yes  
Finished: Yes  
Enclosed: Yes  
Contiguous:  
Yes  
Permitted: Yes  
Wet Space: No  
Addition: No  
Conversion: No

## 10 Floor 2 - Primary Bedroom



Dimensions: 13'9" x 15'8"  
Area: 196 sq. ft  
Counted as Living Area:  
Yes

Heated: Yes  
Finished: Yes  
Enclosed: Yes  
Contiguous:  
Yes  
Permitted: Yes  
Wet Space: No  
Addition: No  
Conversion: No

## 11 Floor 2 - Foyer



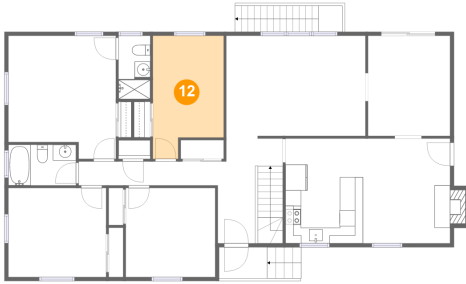
Dimensions: 8'4" x 13'8"  
Area: 109 sq. ft  
Counted as Living Area:  
Yes

Heated: Yes  
Finished: Yes  
Enclosed: Yes  
Contiguous:  
Yes  
Permitted: Yes  
Wet Space: No  
Addition: No  
Conversion: No



# 4921 Cave Spring Lane, Woodmont Manor, Cave Spring, Roanoke, Roanoke County, Virginia,

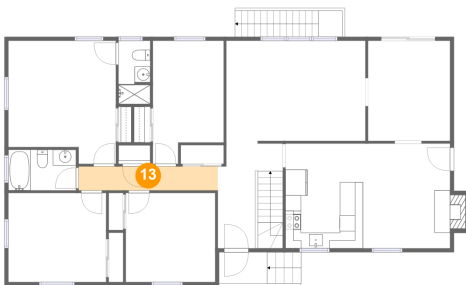
## 12 Floor 2 - Bedroom



Dimensions: 9'0" x 15'8"  
Area: 126 sq. ft  
Counted as Living Area:  
Yes

Heated: Yes  
Finished: Yes  
Enclosed: Yes  
Contiguous:  
Yes  
Permitted: Yes  
Wet Space: No  
Addition: No  
Conversion: No

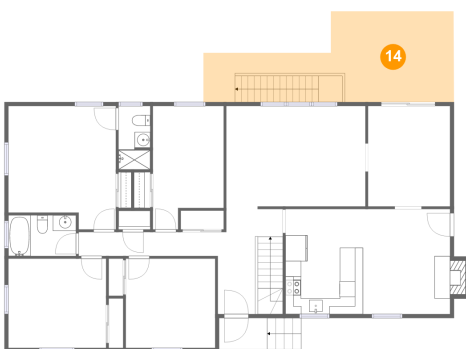
## 13 Floor 2 - Hall



Dimensions: 17'9" x 3'1"  
Area: 54 sq. ft  
Counted as Living Area:  
Yes

Heated: Yes  
Finished: Yes  
Enclosed: Yes  
Contiguous:  
Yes  
Permitted: Yes  
Wet Space: No  
Addition: No  
Conversion: No

## 14 Floor 2 - Patio

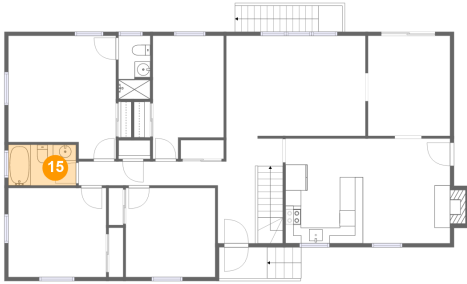


Dimensions: 31'11" x 11'6"  
Area: 283 sq. ft  
Counted as Living Area: No

Heated: No  
Finished: Yes  
Enclosed: No  
Contiguous: Yes  
Permitted: Yes  
Wet Space: No  
Addition: No  
Conversion: No

# 4921 Cave Spring Lane, Woodmont Manor, Cave Spring, Roanoke, Roanoke County, Virginia,

## 15 Floor 2 - Bath



Dimensions: 8'8" x 5'2"  
Area: 45 sq. ft  
Counted as Living Area:  
Yes

Heated: Yes  
Finished: Yes  
Enclosed: Yes  
Contiguous:  
Yes  
Permitted: Yes  
Wet Space: Yes  
Addition: No  
Conversion: No

## 16 Floor 2 - Porch



Dimensions: 6'1" x 4'0"  
Area: 41 sq. ft  
Counted as Living Area: No

Heated: No  
Finished: Yes  
Enclosed: No  
Contiguous: Yes  
Permitted: Yes  
Wet Space: No  
Addition: No  
Conversion: No

## 17 Floor 2 - Living Room



Dimensions: 17'9" x 12'9"  
Area: 226 sq. ft  
Counted as Living Area:  
Yes

Heated: Yes  
Finished: Yes  
Enclosed: Yes  
Contiguous:  
Yes  
Permitted: Yes  
Wet Space: No  
Addition: No  
Conversion: No